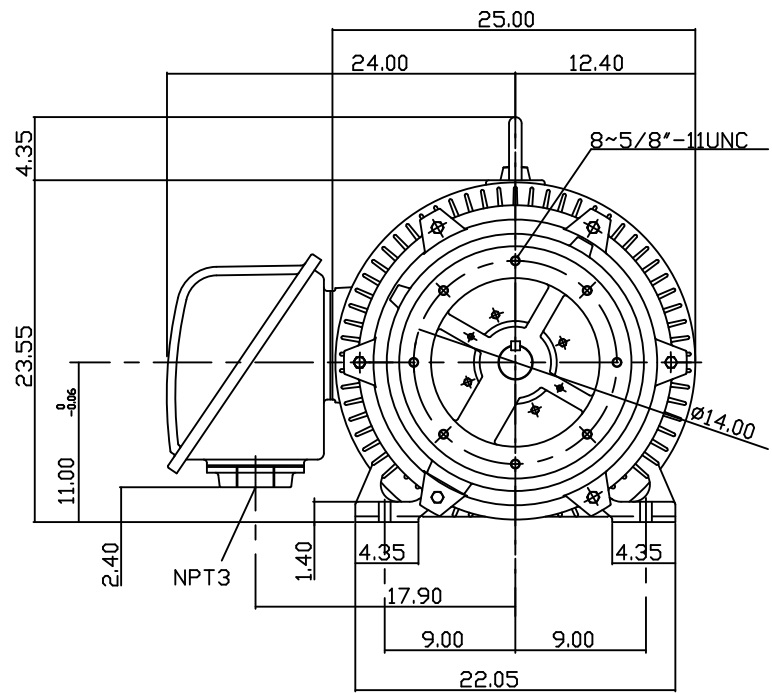
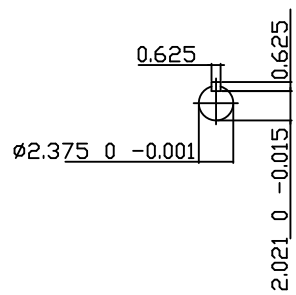
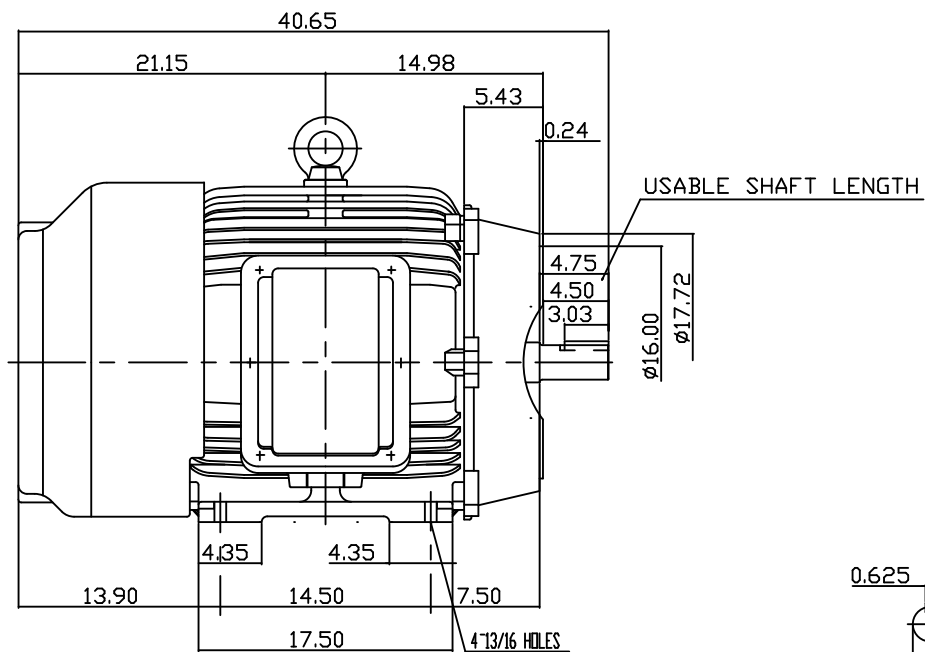


TYPE	OUTPUT		POLE	TIME RATING	VOLTAGE V	Hz	SYN.SPEED R.P.M
	HP.	KW.					
AEHH8NCF	125	93.3	2	CONT.	230/460	60	3600

TOTALLY ENCLOSED FAN-COOLED TYPE, SQUIRREL-CAGE ROTOR



NOTE:

1. DIMENSIONS IN INCH
2. FRAME NO. 444TSC
3. F CLASS INSULATION, S.F.1.15
4. FOR DIRECT FLEXIBLE COUPLING
5. ENCLOSURE: IP54
6. BEARING SIZE: DRIVE END: 6314C3  
NON-DRIVE END: 6314C3
7. APPROX. WEIGHT: 1450 LBS

TW-56C

DATE	SEPT. 29, 2012	OUTLINE DIMENSIONS
CATALOG #:	EP1252C	3-PHASE INDUCTION MOTOR

DWN.	Y.ZHU	JAN 05 2006
CHKD.	H.HUANG	JAN 05 2006
APPD.	C.WANG	JAN 05 2006



DWG. NO.	REV: 00
3B040C719	