

Product Information Packet

November 7, 2016

Data shown is for the current revision model #. Ensure your nameplate model # matches.

Model Number:	5CD184NA054B019
Catalog Number:	D651
Instruction Manual:	GEH-3967N
Connection Diagram:	36A167760CA501
Outline Drawing:	36A167945AA001

Accessory Connection Diagrams			
Bearing Thermocouple:	None	Heater:	None
RTD:	None	Thermistor:	None
Thermostat:	None	Winding Thermocouple:	None
Bearing RTD:	None		

Table of Contents	
Specification	01
Outline Drawing	02
Connection Drawing(s)	03

Marks:

MODEL NUMBER:	5CD184NA054B019	Enclosure Mtg Assem:	36A167770AC001
Outline Drawing:	36A167945AA001	Instruction Book:	GEH-3967N
Connection Diagram:	36A167760CA501	RPM:	1150/2000
Horsepower:	25	Armature Amps:	42
Armature Volts:	500	Type:	CD328AT
Wound:	SHUNT	Power Supply Code:	D
Enclosure:	DPFG-BV	Insulation Class:	F
Duty:	CONT	Ambient Max (°C):	40 C
Rating Code:	184N1250-03	Field Volts:	300/150
K(V):	3.72 Cemf volts/Radian/Sec	WK2:	9.67Lb Ft2
K(T):	2.72 Ft/Amp	Year of Manufacture:	2016
Minimum Ambient:	0 C	Max Altitude:	3300 Ft

Resistances at 25 Degrees C :

Shunt Field:	93 OHMS
Armature:	.608 OHMS
Commutator Field:	.1784 OHMS

Inductances:

Armature Circuit Total:	20.590 mH Saturated
Shunt Field:	91.0 Henries Unsaturated

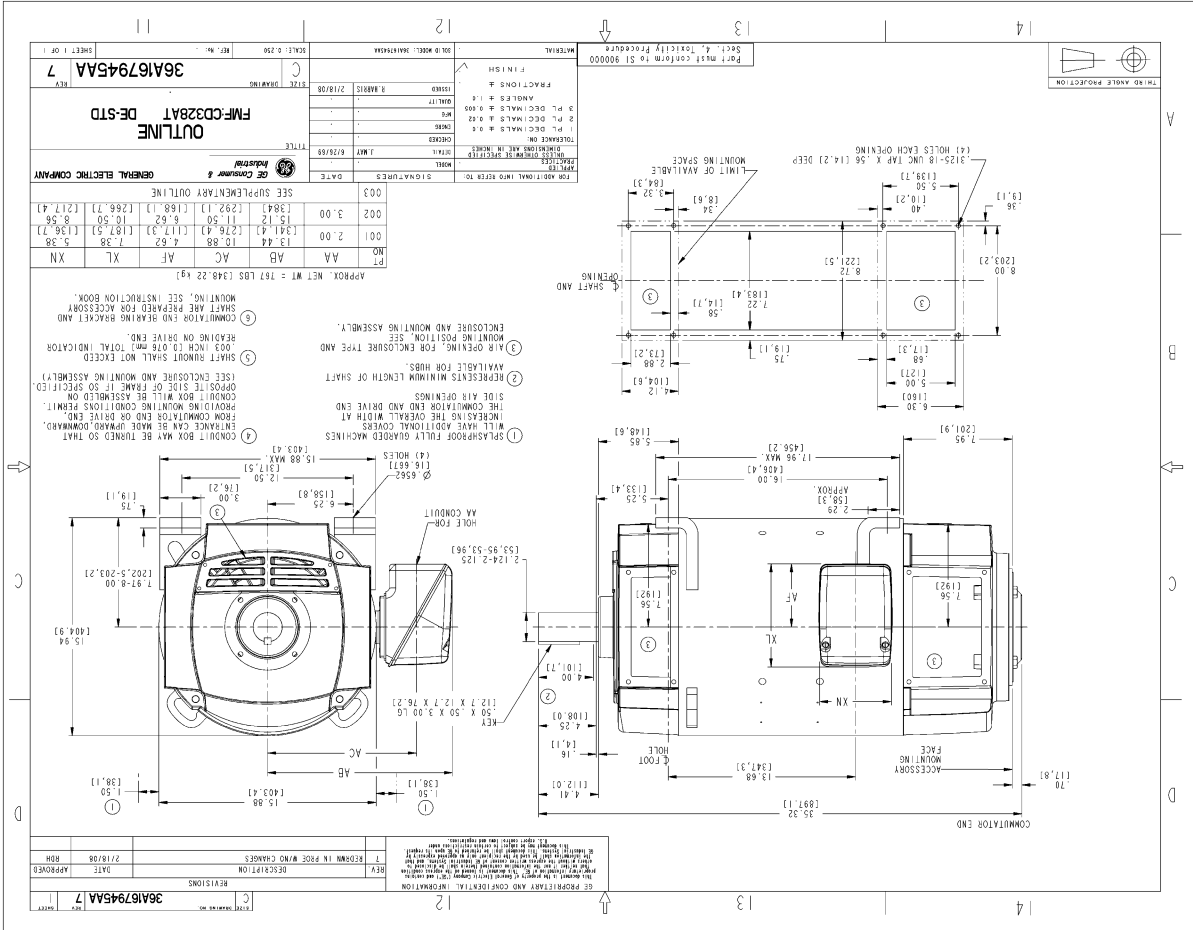
Shunt Field Data:

Shunt Field Current(1): 2.3 AMPS at Rated Load and 1150 RPM
 Shunt Field Current(2): 1.62 AMPS at Rated Load and 1433 RPM
 Shunt Field Current(3): 1.02 AMPS at Rated Load and 2000 RPM

Additional Machine Notes:

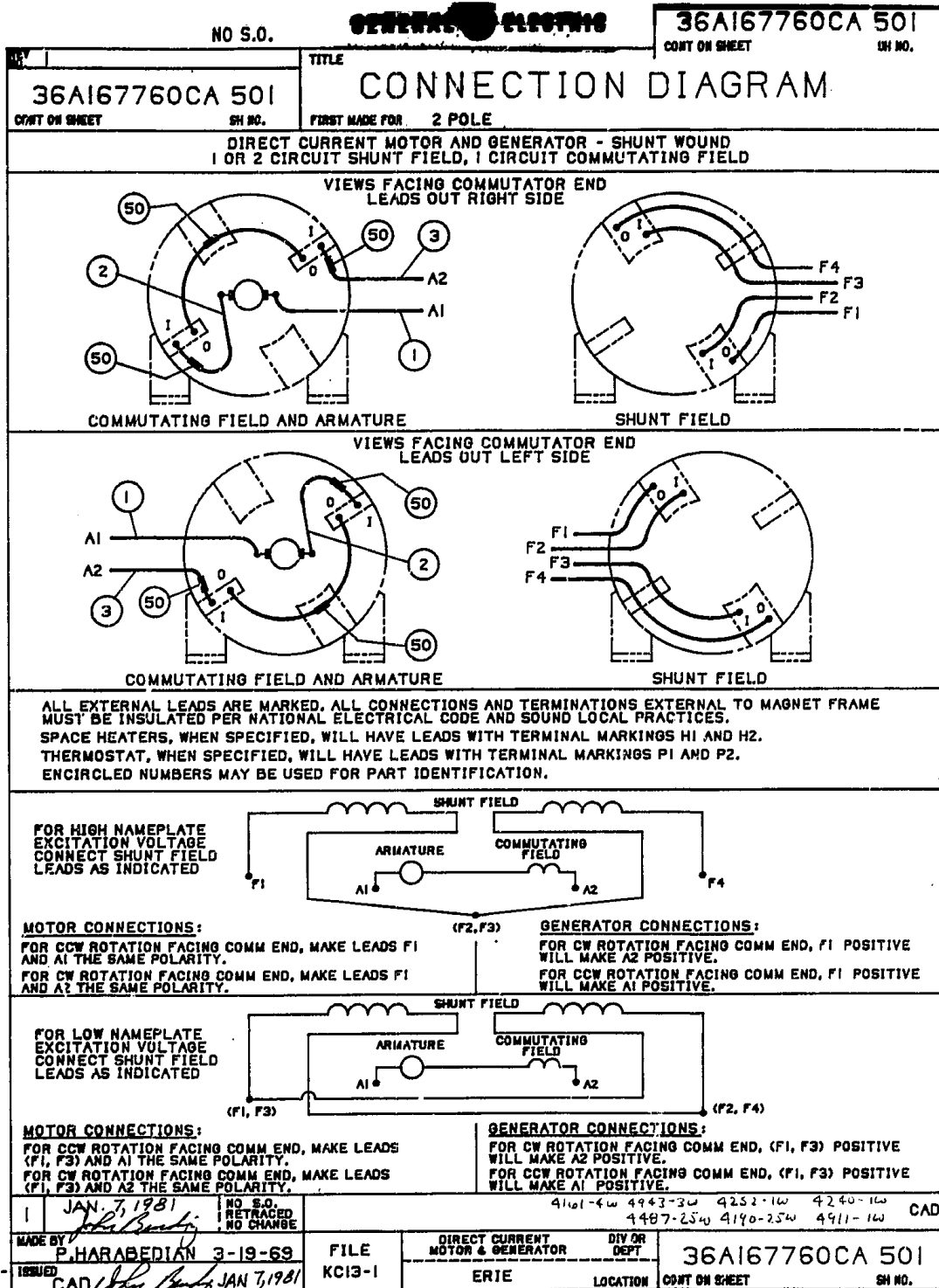
DRIPPROOF FULLY GUARDED, BLOWER VENTILATED - BALL BEARINGS
 CONDUIT BOX ON RIGHT HAND SIDE FACING COMMUTATOR END
 STANDARD SHAFT DRIVE END ONLY - WITH FEET
 WITH:
 CSA STAMP
 THERMOSTAT- NORMALLY CLOSED, AC RATING- 600V MAX-
 .5A, 250V-1.5A, OR 125V-3A, DC RATING- 30V MAX-
 1.5A. MAXIMUM CURRENT BASED ON INDUCTIVE LOADS UP
 TO AND INCLUDING NEMA NO.5 CONTACTOR.

Marks:



NAME: 20080954 OBJECT: 36A167945AA DATE: 16-Feb-08 11:49:55

Marks:



DGRM 36A167760CA501R01
PLT .64 SCL



imagination at work