

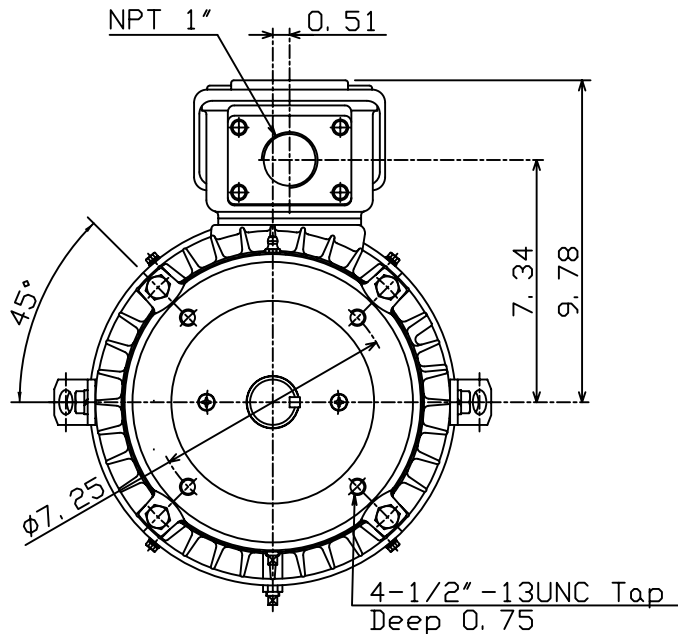
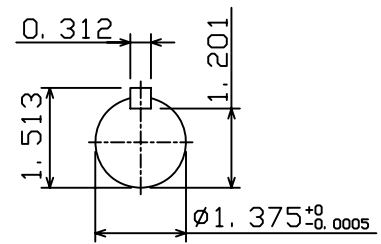
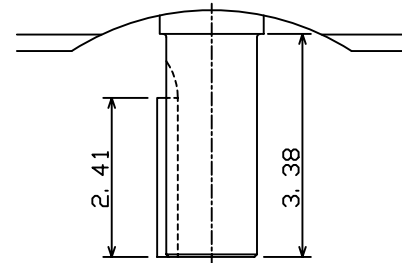
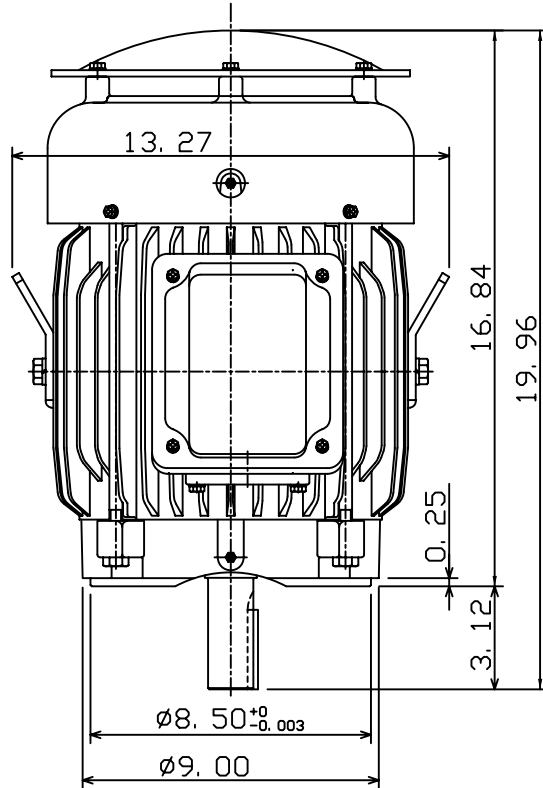
DATE
JAN. 4, 2007
CAT. #: EPV7/54C

OUTLINE DIMENSIONS 3-PHASE INDUCTION MOTOR

MOTOR TYPE:
AEUH8NDC
FRAME NO. 213TC

Pole	HP	kW	Hz	VOLT	Syn. Speed r/min(rpm)
4	7.5	5.6	60	230/460	1800
Ins	Rating	Dimension in	Approx Weight	Bearings	
F	CONT.	inches	180 LBS	DE: 6308ZZ	NDE: 6306ZZ

Totally Enclosed Fan-Cooled Vertical Type. Squirrel-Cage Rotor.



DWN. J. H. LIANG 12-25-06
CHKD. H. C. YAN 12-28-06
APPD. M. C. TSAI 12-28-06

TEC Westinghouse

DWG NO.
31049M986180