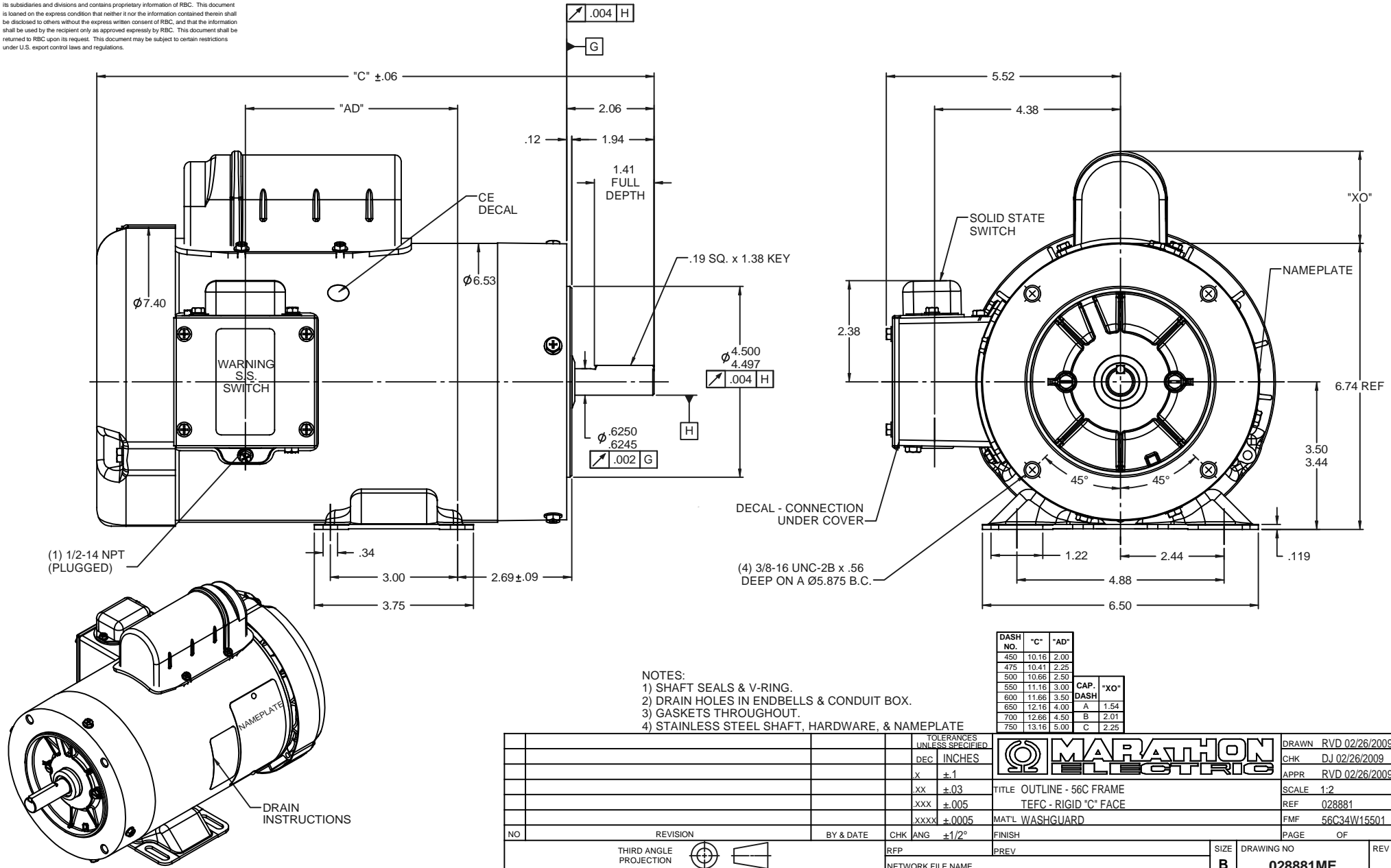


RBC PROPRIETARY AND CONFIDENTIAL INFORMATION
 This document is the property of REGAL BELLOIT CORPORATION ("RBC") including its subsidiaries and divisions and contains proprietary information of RBC. This document is loaned on the express condition that neither it nor the information contained therein shall be disclosed to others without the express written consent of RBC, and that the information shall be used by the recipient only as approved expressly by RBC. This document shall be returned to RBC upon its request. This document may be subject to certain restrictions under U.S. export control laws and regulations.



- NOTES:
 1) SHAFT SEALS & V-RING.
 2) DRAIN HOLES IN ENDBELLS & CONDUIT BOX.
 3) GASKETS THROUGHOUT.
 4) STAINLESS STEEL SHAFT, HARDWARE, & NAMEPLATE

DASH NO.	"C"	"AD"	CAP.	"XO"
450	10.16	2.00		
475	10.41	2.25		
500	10.66	2.50		
550	11.16	3.00		
600	11.66	3.50	A	1.54
650	12.16	4.00	B	2.01
700	12.66	4.50	C	2.25
750	13.16	5.00		

TOLERANCES UNLESS SPECIFIED		DRAWN	
DEC	INCHES	CHK	RVD 02/26/2009
x	±.1	APPR	DJ 02/26/2009
xx	±.03		RVD 02/26/2009
xxx	±.005	TITLE	OUTLINE - 56C FRAME
xxxx	±.0005	REF	TEFC - RIGID "C" FACE
		FMF	56C34W15501
NO	REVISION	MATL	WASHGUARD
	BY & DATE	FINISH	
	CHK ANG ±1/2°	PREV	
	RFP	SIZE	DRAWING NO
	THIRD ANGLE PROJECTION	B	028881ME
	NETWORK FILE NAME	REV	

