

Product Information Packet

November 8, 2016

Data shown is for the current revision model #. Ensure your nameplate model # matches.

Model Number:	5KS184STE305A
Catalog Number:	M7542
Instruction Manual:	GEI-M1031
Connection Diagram:	GEM2034E-FIG203
Outline Drawing:	358B6270AB

Accessory Connection Diagrams			
Bearing Thermocouple:	None	Heater:	None
RTD:	None	Thermistor:	None
Thermostat:	None	Winding Thermocouple:	None
Bearing RTD:	None		

Table of Contents	
Specification	01
Performance Characteristics	02
Outline Drawing	03
Connection Drawing(s)	04



Marks:

MODEL NUMBER:	5KS184STE305A	Estimated Weight:	106 Lbs
Outline Drawing:	358B6270AB	Time Rating:	CONT
Connection Diagram:	GEM2034E-FIG203	Enclosure:	TEFC
Instruction Book:	GEI-M1031	Encl Construction:	SD
Design Code:	18AD3008A	Ambient Max(°C):	40
Type:	KS	Alt Ambient Max(°C):	--
Frame:	184T	Insulation Class:	F
Phases:	3	NEMA Design:	B
Poles:	6	Nominal Efficiency:	88.5 %
Output Power:	2HP 1.5KW	Guaranteed Efficiency:	86.5
RPM:	1170	3/4 Load Efficiency:	88.7
Voltage:	230/460	KVA Code:	L
Hertz:	60	Max KVAR:	1.3
Amps - FL:	6.6/3.3	Power Factor:	65
Service Factor:	1.15	Bearing - DE:	6207ZZC3
Alt Service Factor:	--	Bearing - ODE:	6206ZZC3

Enclosure is Totally Enclosed Fan-Cooled

Stamped Nameplate Notes:

6 POLE, TEFC,
 IP54;IBM3;MASS 48 KG; MIN AMB -15C; MAX ALT 1000M
 USABLE AT 200V @ 2.0 HP, 7.2 AMPS @ 1.0 SF
 50HZ DATA @ 1.15 SF: 1.5/1.1 HP,
 200/400V, 6.4/3.2 AMPS: 50HZ DATA @ 1.00 SF
 2.0/1.5 HP, 200/400V,7.0/3.5 AMPS
 GREASE TYPE: SHELL ALVANIA R3 LITHIUM GREASE

Additional Information:

6 POLE, TEFC,
 DUAL DIMENSION OUTLINE, IP54
 NO. OF MOTOR LEADS: 9
 CONDUIT BOX VOLUME (CU IN): 47.1
 CONDUIT BOX MATERIAL: CAST IRON
 SUITABLE FOR USE IN CLASS I DIVISION 2 LOCATIONS
 CLASS I DIVISION 2 GROUPS A,B,C,D T3C
 CLASS I ZONE 2 IIC T3C

Performance Characteristics

1st Winding 1st Connection

Design: 18AD3008A

Marks:

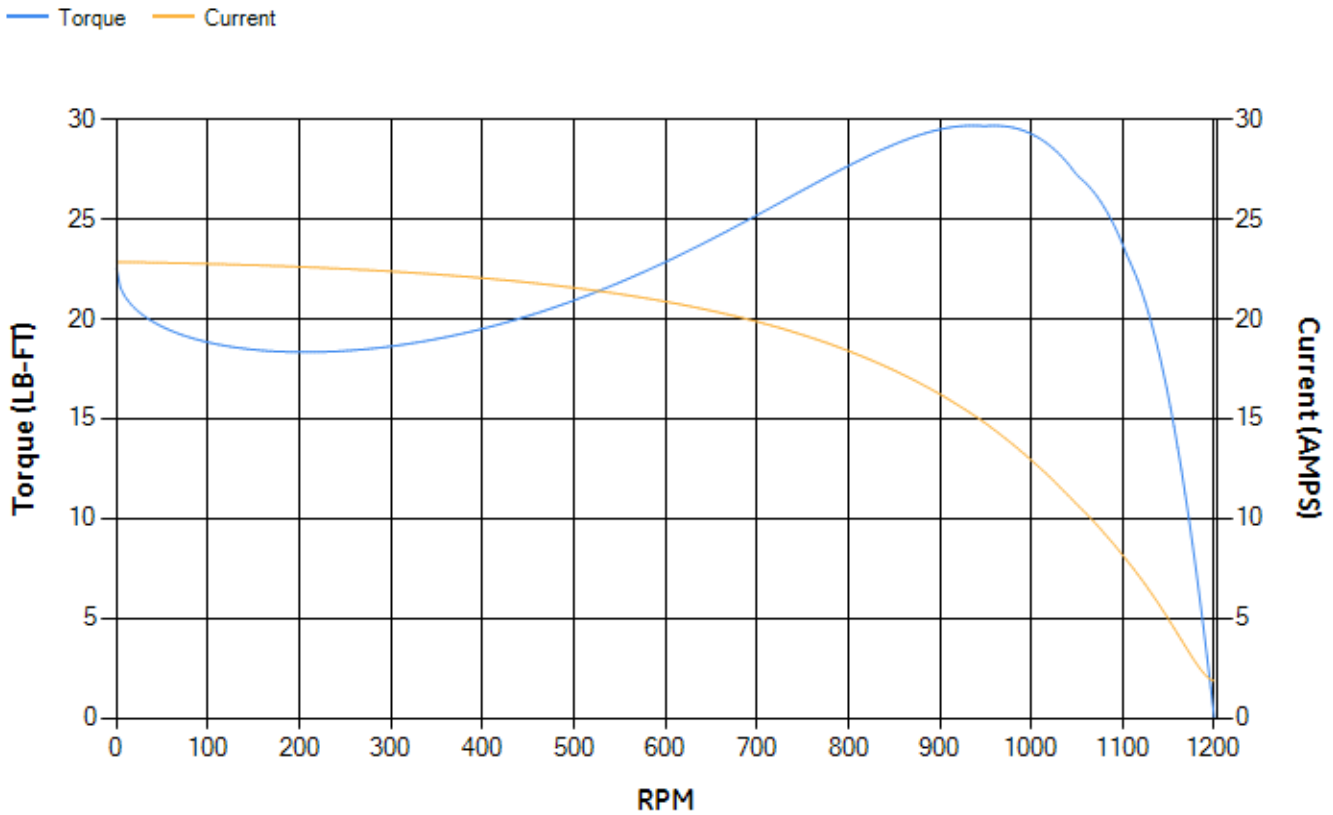
LOAD %	125.0	115.0	100.0	75.0	50.0	25.0	0.0
% EFF	88.05	88.39	88.94	88.68	87.03	80.17	0.00
% PF	73.82	72.08	68.74	60.6	47.93	29.42	5.58
AMPS	3.6	3.38	3.06	2.61	2.24	1.98	1.85

TORQ(FL)#FT	8.96	TORQ(LR)%FL	251.42	TORQ(BD)%FL	321.48
AMPS(LR)	22.85	PF AT START	0.41		

This motor is capable of two cold or one hot start with a maximum connected load inertia of 367 Lb-Ft Sq (15.45 Kg-meter Sq)at 100% voltage, where the load torque varies with the square of the speed. Acceleration time with maximum inertia and the above load type is 72 seconds. Safe stall time at 100% voltage is 171 seconds cold, 134 seconds hot. Rotor inertia is 0.46 Lb-Ft Sq (0.02 Kg-meter Sq).

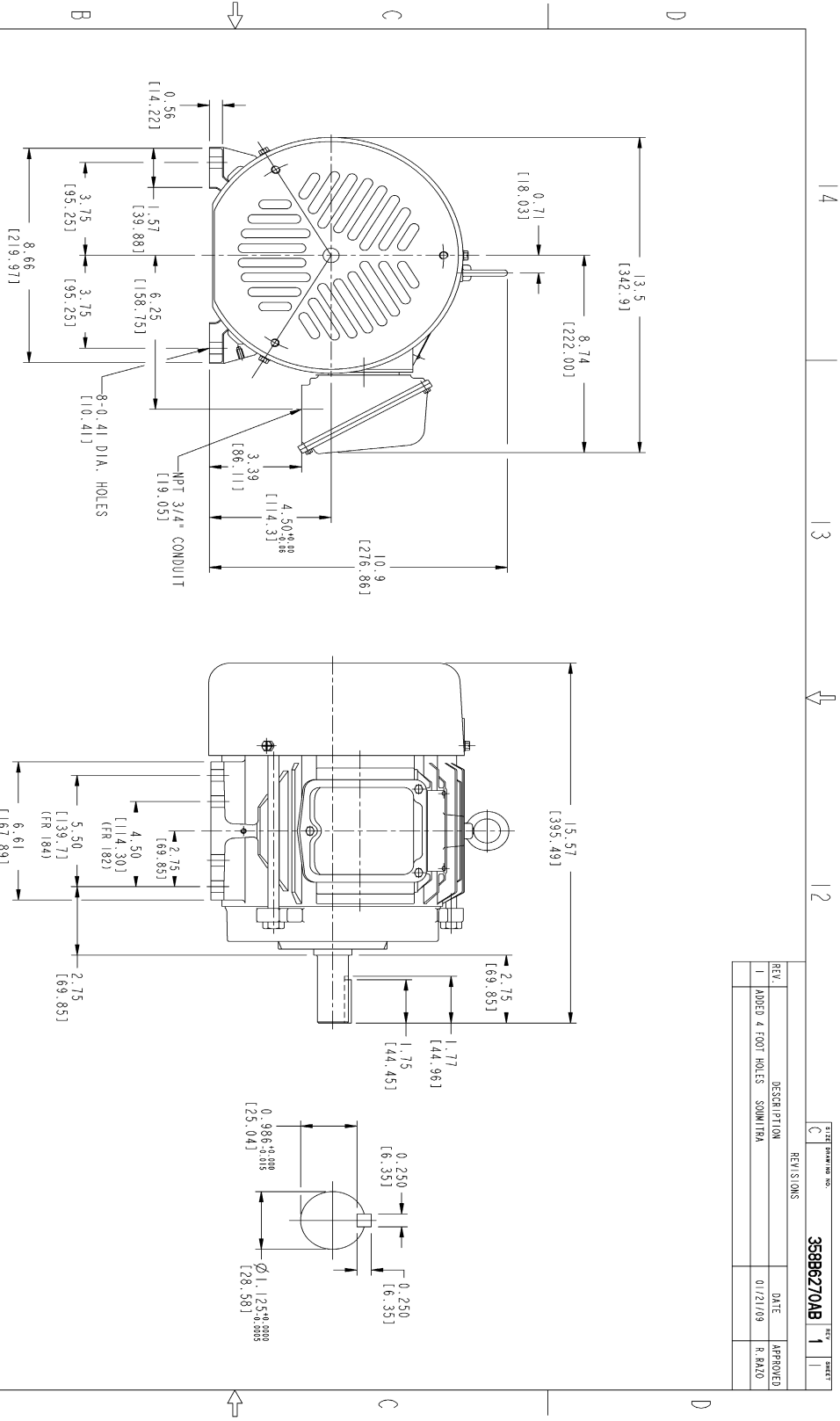
Open Circuit A-C:	0.156	Short Circuit D-C:	0.011
Short Circuit A-C:	0.011	X/R Ratio:	4.012
Stator Slots:	36	Rotor Slots:	46

Speed Torque Current Curve (First Connection, First Speed)



NAME:501452442 OBJECT:358B6270AB DATE:22-Jan-09 11:15:11

Marks:

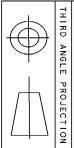


NOTES :

1. DIMENSIONS ARE IN INCHES.
2. F-1 ASM AS SHOWN.
3. F-2 ASM - HAS CONDUIT BOX ON OPPOSITE SIDE.
4. BRACKETED DIMENSIONS ARE METRIC (MILLIMETERS)
5. ICALL, IP54, IMB34 APPLY

REV.	DESCRIPTION	DATE	APPROVED
1	ADDED 4 FOOT HOLES	01/21/09	R. PALO

358B6270AB REV 1



Part must conform to SI 900000 Sect 4, Toxicity Procedure

FOR ADDITIONAL INFO REFER TO:	SIGNATURES	DATE
APPROVED		
DESIGNED		
CHECKED		
ENGINEER		
DRAWN		
DATE		

FOR ADDITIONAL INFO REFER TO:	SIGNATURES	DATE
APPROVED		
DESIGNED		
CHECKED		
ENGINEER		
DRAWN		
DATE		

REV.	DESCRIPTION	DATE	APPROVED
1	ADDED 4 FOOT HOLES	01/21/09	R. PALO

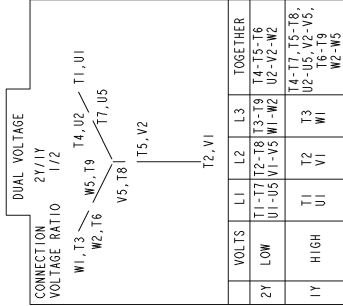
358B6270AB REV 1

GE Consumer & Industrial GENERAL ELECTRIC COMPANY

OUTLINE FTD - 82T/84T TERC CE MARK 471 CU IN CONDUIT BOX

Marks:

Connection Diagram
GEM2034E-FIG203



NAME: 500903578 OBJECT: GEM2034E-FIG203 DATE: 03-Nov-06 13:53:10