

Product Information Packet

November 7, 2016

Data shown is for the current revision model #. Ensure your nameplate model # matches.

Model Number:	5KS213ATE105A
Catalog Number:	E750
Instruction Manual:	GEI-M1023
Connection Diagram:	GEM2034E-FIG10
Outline Drawing:	358B6215AA

Accessory Connection Diagrams			
Bearing Thermocouple:	None	Heater:	None
RTD:	None	Thermistor:	None
Thermostat:	None	Winding Thermocouple:	None
Bearing RTD:	None		

Table of Contents	
Specification	01
Performance Characteristics	02
Outline Drawing	03
Connection Drawing(s)	04

Marks:

MODEL NUMBER:	5KS213ATE105A	Estimated Weight:	165 Lbs
Outline Drawing:	358B6215AA	Time Rating:	CONT
Connection Diagram:	GEM2034E-FIG10	Enclosure:	DP
Instruction Book:	GEI-M1023	Encl Construction:	OPEN
Design Code:	21AD0008A	Ambient Max(°C):	40
Type:	KS	Alt Ambient Max(°C):	--
Frame:	213T	Insulation Class:	F
Phases:	3	NEMA Design:	A
Poles:	2	Nominal Efficiency:	89.5 %
Output Power:	10HP 7.4KW	Guaranteed Efficiency:	87.5
RPM:	3510	3/4 Load Efficiency:	91.3
Voltage:	230/460	KVA Code:	J
Hertz:	60	Max KVAR:	3.1
Amps - FL:	25.8/12.9	Power Factor:	81
Service Factor:	1.15	Bearing - DE:	6308ZZ
Alt Service Factor:	--	Bearing - ODE:	6208ZZ

Enclosure is Dripproof

Stamped Nameplate Notes:**Additional Information:**

OFFSET STATOR CORE NOT SUITABLE FOR F2 CONVERSION
 2 POLE DP
 LRA: 195.6/97.8
 NO. OF MOTOR LEADS: 12
 CONDUIT BOX VOLUME (IN³): 50.3
 CONDUIT BOX MTL: STAMPED STEEL
 GREASE TYPE: SHELL ALVANIA R3 LITHIUM GREASE
 USABLE AT 200V @ 10HP, 28.5 AMPS @ 1.0 SF
 50 HZ DATA: 10HP, 200/400V, 30/15 AMPS @ 1.0SF, 2890 RPM
 SOUND POWER: 71.8
 DMK, 06/04, DATA UPDATE 11/2004
 INVERTER DUTY PER NEMA MG1 PART 31
 FOR VARIABLE TORQUE LOADS

Performance Characteristics

1st Winding 1st Connection

Design: 21AD0008A

Marks:

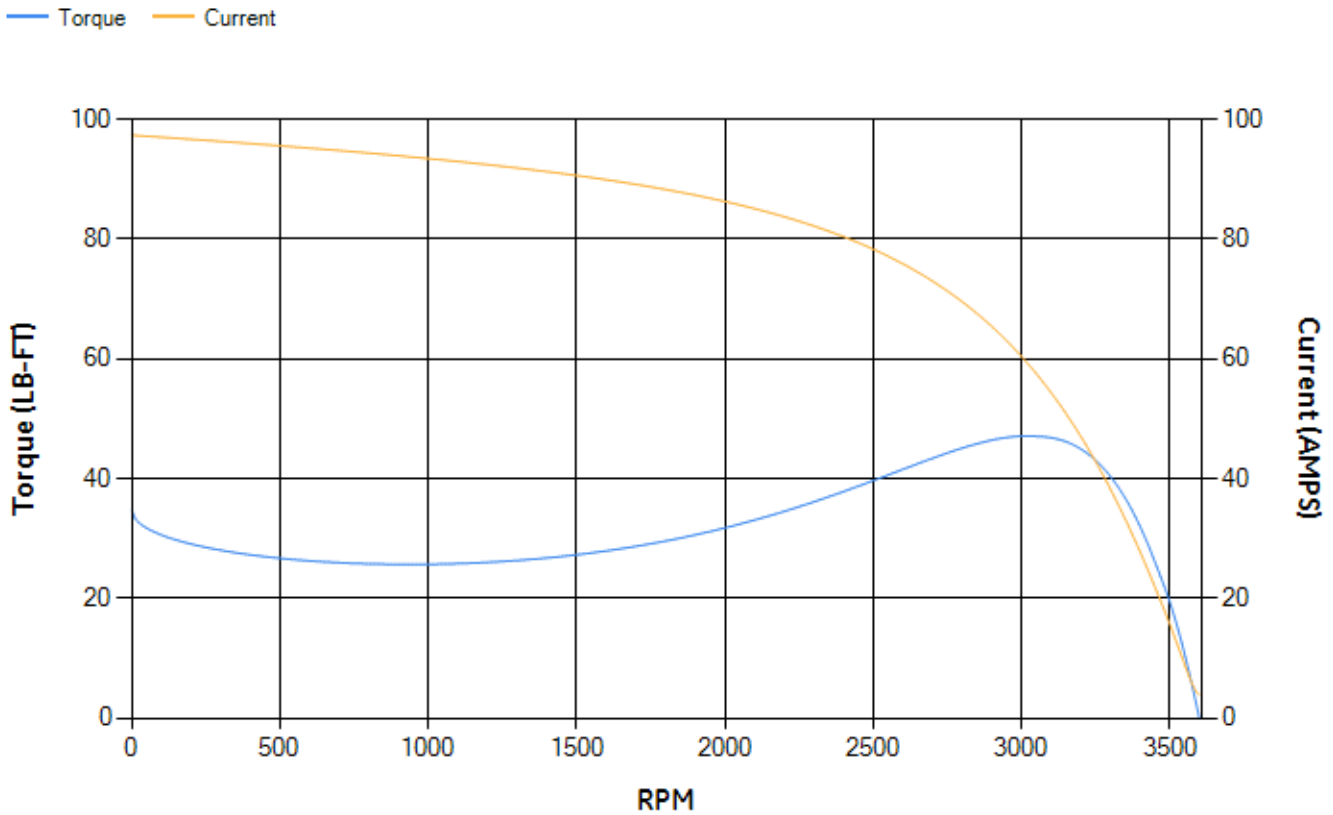
LOAD %	125.0	115.0	100.0	75.0	50.0	25.0	0.0
% EFF	89.34	89.92	90.84	91.35	90.97	87.05	0.00
% PF	86.4	86.33	85.76	82.94	75.37	55.14	7.75
AMPS	15.16	13.86	12.01	9.26	6.83	4.87	3.88

TORQ(FL)#FT	14.95	TORQ(LR)%FL	232.8	TORQ(BD)%FL	308.35
AMPS(LR)	97.35	PF AT START	0.36		

This motor is capable of two cold or one hot start with a maximum connected load inertia of 40 Lb-Ft Sq (1.68 Kg-meter Sq) at 100% voltage, where the load torque varies with the square of the speed. Acceleration time with maximum inertia and the above load type is 17 seconds. Safe stall time at 100% voltage is 29 seconds cold, 23 seconds hot. Rotor inertia is 0.4 Lb-Ft Sq (0.02 Kg-meter Sq).

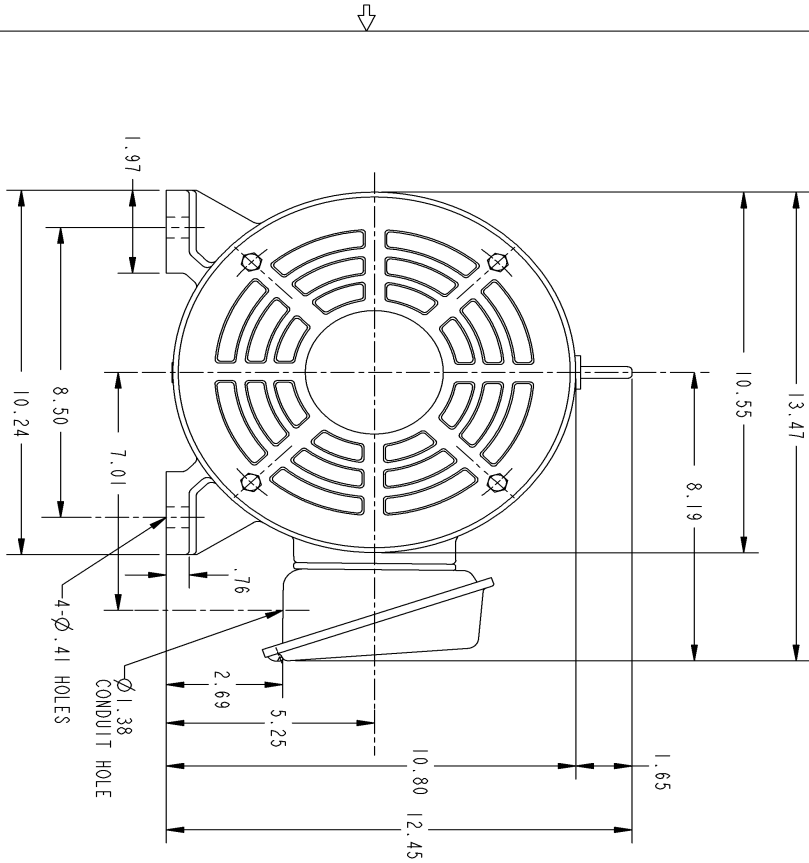
Open Circuit A-C:	0.339	Short Circuit D-C:	0.013
Short Circuit A-C:	0.013	X/R Ratio:	4.911
Stator Slots:	24	Rotor Slots:	18

Speed Torque Current Curve (First Connection, First Speed)



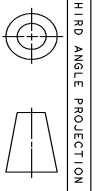
NAME:501452442 OBJECT:358B6215AA DATE:23-May-07 23:10:49

Marks:



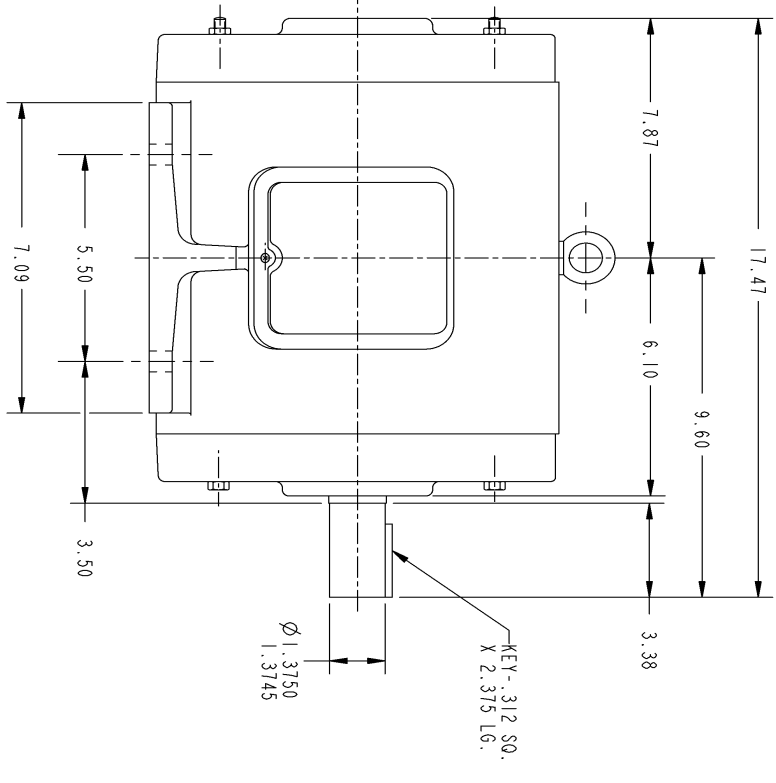
NOTES :

1. CONDUIT BOX MAY BE PLACED WITH THE ENTRANCE DOWN, UP OR ON EITHER SIDE.
2. F-1 ASM AS SHOWN.
3. F-2 ASM - HAS CONDUIT BOX ON OPPOSITE SIDE.



SIZE: DRAWING FOR **B 358B6215AA**
 GE PROPRIETARY INNOVATION

REV.	DESCRIPTION	DATE	APPROVED
1	ISAAC 07-0770	05/02/07	R. KOHNE



UNLESS OTHERWISE SPECIFIED:		SIGNATURES		DATE	
DIMENSIONS ARE IN INCHES		DRAWN		P. RAJU 03/27/03	
TOLERANCE ON:		CHECKED		PRASHANKAR 03/27/03	
2 PL DECIMALS ± .		ENGRS			
3 PL DECIMALS ± .		ISSUED		PRASHANKAR 03/27/03	
ANGLES ± 1°		APPLIED PRACTICES			
MATERIAL:		SIZE/DRAWING		SCALE: DRAWING SCALE	
		B		358B6215AA	
		SHEET 1 OF 1		REV 1	

GE Industrial Systems
 GENERAL ELECTRIC COMPANY
 Fort Wayne, Indiana

OUTLINE
 213T - OPEN DRIP PROOF

DISTRIBUTION:

Marks:

Connection Diagram
GEM2034E-FIG10

