

Product Information Packet

January 13, 2017

Data shown is for the current revision model #. Ensure your nameplate model # matches.

Model Number:	5KS324DAJ7005A
Catalog Number:	V4603
Instruction Manual:	GEK-95353
Connection Diagram:	GEM2034E-FIG9
Outline Drawing:	148CB32VMHKBCAA0001

Accessory Connection Diagrams

Bearing Thermocouple:	None	Heater:	3027JE-1C
RTD:	None	Thermistor:	None
Thermostat:	None	Winding Thermocouple:	None
Bearing RTD:	None		

Table of Contents

Specification	01
Performance Characteristics	02
Outline Drawing	03
Connection Drawing(s)	04
Spare parts	05



Marks:

MODEL NUMBER:	5KS324DAJ7005A	Estimated Weight:	790 Lbs
Outline Drawing:	148CB32VMHKBCAA0001	Time Rating:	CONT
Connection Diagram:	GEM2034E-FIG9	Enclosure:	WPI
Instruction Book:	GEK-95353	Encl Construction:	OPEN
Design Code:	32BD3113A	Ambient Max(°C):	40
Type:	KS	Alt Ambient Max(°C):	--
Frame:	L324TP16	Insulation Class:	H
Phases:	3	NEMA Design:	B
Poles:	6	Nominal Efficiency:	93.0 %
Output Power:	25HP 18.5KW	Guaranteed Efficiency:	91.7
RPM:	1180	3/4 Load Efficiency:	93.4
Voltage:	230/460	KVA Code:	G
Hertz:	60	Max KVAR:	10.3
Amps - FL:	64.2/32.1	Power Factor:	78.5
Service Factor:	1.15	Bearing - DE:	6212C3
Alt Service Factor:	--	Bearing - ODE:	235A2523AD01

Enclosure is Weather Protected One

Stamped Nameplate Notes:

HTR LDS HE1-HE2 115V 100W
 ROT CCW FACING ODE LEAD/PH SEQ 1-2-3/1-2-3
 INVERTER DUTY PER NEMA MG1 PART 31
 ALTERNATE RATING FOR PWM CONTROL:1.0SF 40C AMBIENT
 VAR TORQUE RANGE 8-60 HZ
 SUITABLE FOR 20 HP, 190/380V 50HZ WITH
 75.2/37.3 AMPS AND 975 RPM AT 1.0 SF

Additional Information:

6P - VERT HOLLOW SHAFT HIGH THRUST (1D)
 SPECIAL BALANCE
 346 CU IN - 3.00" NPT
 BEARING LIFE 8760 HRS AT 6700 LB THRUST
 OIL RESISTANT SLEEVING ON LEADS
 115V HTR LDS TO MAIN CONDUIT BOX
 COUPLING NOT INCLUDED IN BOM, WILL BE
 ORDERED SEPERATELY
 CG: 13.82 IN FROM P-BASE FACE
 RCF: 4110 CPM AT C/BOX SIDE, 4320 CPM AT
 90 DEG FROM C/ BOX SIDE

Performance Characteristics

1st Winding 1st Connection

Design: 32BD3113A

Marks:

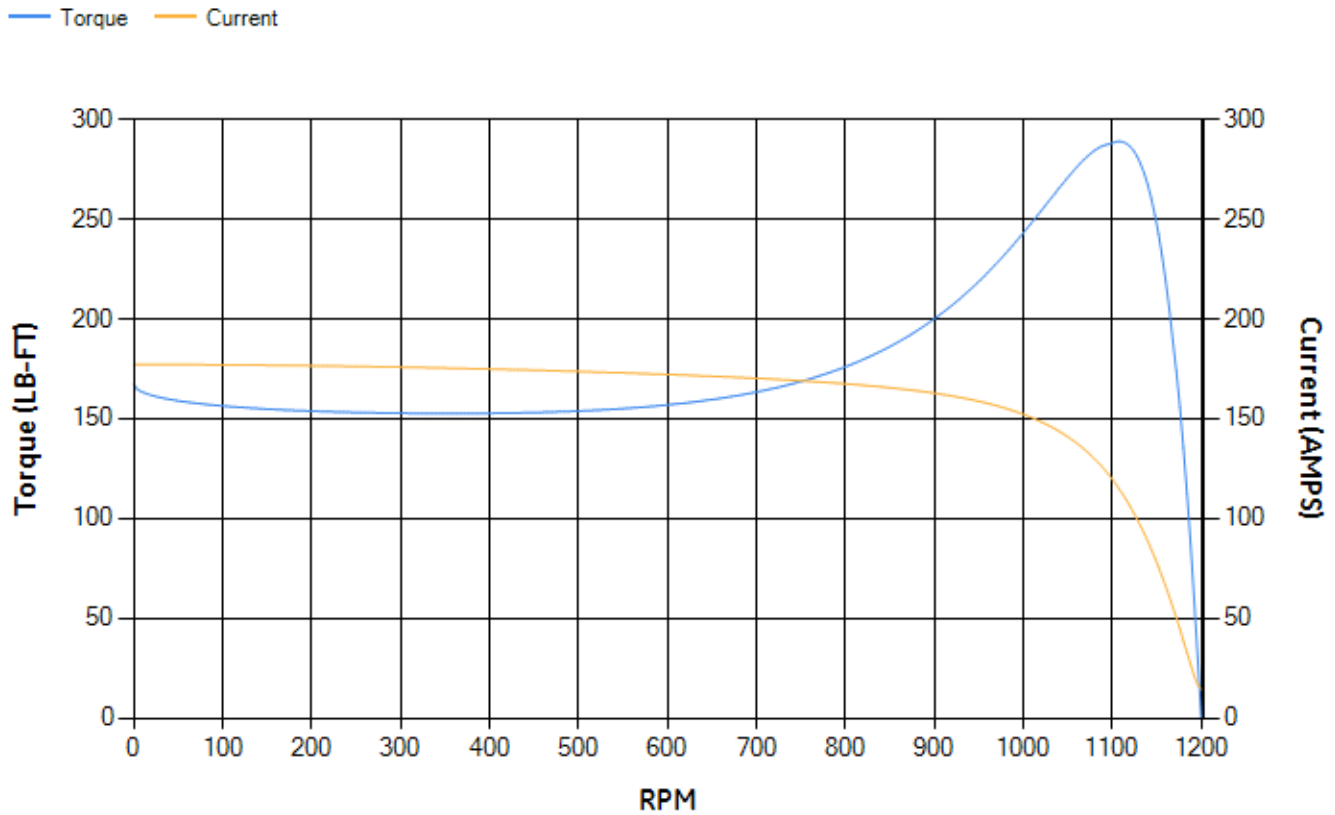
LOAD %	125.0	115.0	100.0	75.0	50.0	25.0	0.0
% EFF	92.12	92.5	93.16	93.35	92.9	89.54	0.00
% PF	80.56	79.9	78.25	72.96	61.95	40.09	4.02
AMPS	39.41	36.41	32.08	25.77	20.33	16.3	14.42

TORQ(FL)#FT	111.13	TORQ(LR)%FL	150.77	TORQ(BD)%FL	257.84
AMPS(LR)	177.14	PF AT START	0.33		

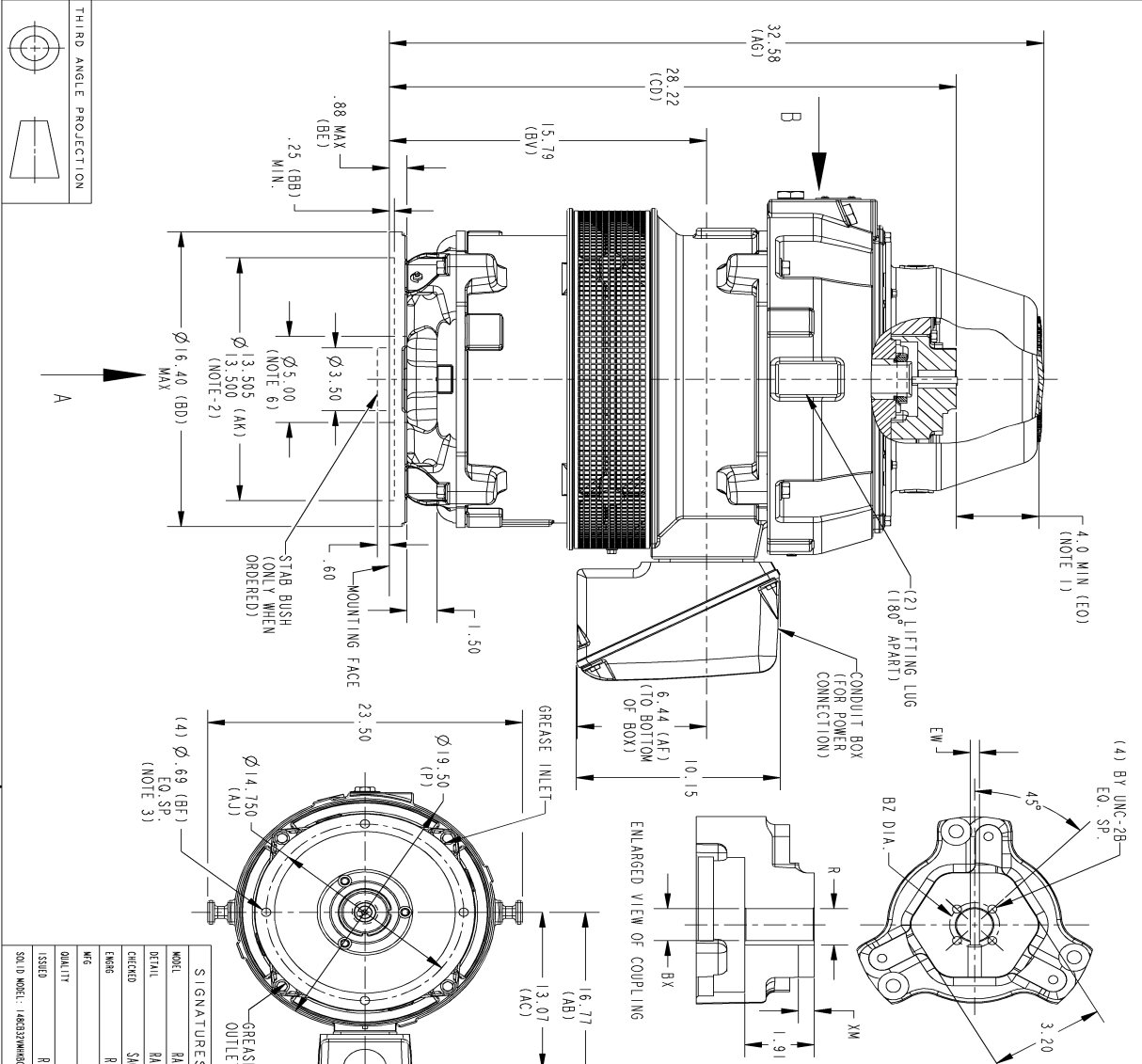
This motor is capable of two cold or one hot start with a maximum connected load inertia of 2432 Lb-Ft Sq (102.39 Kg-meter Sq)at 100% voltage, where the load torque varies with the square of the speed. Acceleration time with maximum inertia and the above load type is 66 seconds. Safe stall time at 100% voltage is 112 seconds cold, 88 seconds hot. Rotor inertia is 8.1 Lb-Ft Sq (0.34 Kg-meter Sq).

Open Circuit A-C:	0.353	Short Circuit D-C:	0.018
Short Circuit A-C:	0.023	X/R Ratio:	6.723
Stator Slots:	54	Rotor Slots:	40

Speed Torque Current Curve (First Connection, First Speed)



Marks:



REV.	DESCRIPTION	DATE	APPROVED

REV.	DESCRIPTION	DATE	APPROVED

SIGNATURES	DATE
RAJESH	03/14/2016
SACHIN	03/14/2016
RAJESH	03/14/2016
RAJESH	03/14/2016

DETAIL	DATE
RAJESH	03/14/2016
SACHIN	03/14/2016
RAJESH	03/14/2016
RAJESH	03/14/2016

QUALITY	DATE
RAJESH	03/14/2016
RAJESH	03/14/2016

COUPLING DIMENSIONS	KEY WAY				
BX	BY	BZ	EW	R	XM
1.502-1.501	2.125	0.315	1.579/1.669	.562	
1.439-1.438	2.125	0.315	1.615/1.605	.562	
1.292-1.291	1.750	0.315	1.425/1.415	.562	
1.252-1.251	1/4-20				
1.189-1.188	1.750	0.250	1.371/1.361	.438	
1.002-1.001	1.750	0.250	1.314/1.304	.438	
	1.315	0.250	1.124/1.114	.438	

NOTES:

- THE TOTAL HEIGHT OF PUMP SHAFT AND LOCKING NUT ABOVE COUPLING MUST NOT EXCEED THIS DIMENSION.
- TOLERANCE ON FACE RINOUT AND PERMISSIBLE ECCENTRICITY OF MOUNTING RABBIT ARE .007 T.I.R.
- CENTRE OF MOUNTING BOLTS WITHIN 0.025 OF ANGULAR & DIAMETRICAL LOCATION WITHIN REFERENCE TO THE CENTRLINE OF MOUNTING RABBIT.
- PROVIDED MONTING CONDITIONS PERMIT, CONDUIT BOX MAY BE TURNED SO THAT ENTRANCE CAN BE MADE UPWARD, DOWNWARD OR FROM EITHER SIDE.
- FOR ESTIMATING ONLY UNLESS ENDORSED FOR CONSTRUCTION.
- MAINTAIN MINIMUM CLEARANCE FOR SHAFT SLINGER.

SIZE DRAWING NO. B 148CB32VMHKBCAA0001 0

REV SHEET 1

REVISIONS

GE Motors
GENERAL ELECTRIC COMPANY

OUTLINE, WPI
NEMA 324-326 HOLLOW SHAFT, HIGH THRUST
1650 BD, 346 CU IN C/BOX

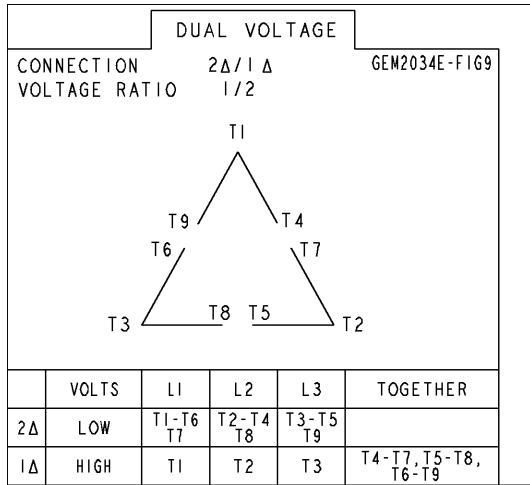
148CB32VMHKBCAA0001

SCALE: 0.180 REF. No.

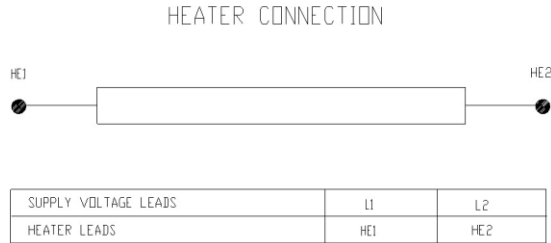
SHEET 1 OF 1

Marks:

Connection Diagram
GEM2034E-FIG9



Heater Connection
3027JE-1C



End shield Assembly		
Part Description	DE Side Part#	ODE Side Part#
End Shield	115E7205AA1	115E7208LA1
Bearing	235A2509BE01	235A2523AD01
Slinger/Inproseal	235A2300FM1	

Fan & Fan Cover Assembly	
Part Description	Part#
Fan	
Fan Cover	149C4053AA1

Conduit & Accessories Box Assembly	
Part Description	Part#
Conduit Box	149C4429AA2

Mechanical Accessories	
Part Description	Part#
Brake	
Tachometer	