

Product Information Packet

January 12, 2017

Data shown is for the current revision model #. Ensure your nameplate model # matches.

Model Number:	5KS324CAG115A
Catalog Number:	E9274
Instruction Manual:	GEI-56128
Connection Diagram:	GEM2034E-FIG9
Outline Drawing:	225B4700AY

Accessory Connection Diagrams			
Bearing Thermocouple:	None	Heater:	None
RTD:	None	Thermistor:	None
Thermostat:	3027JE-2	Winding Thermocouple:	None
Bearing RTD:	None		

Table of Contents	
Specification	01
Performance Characteristics	02
Outline Drawing	03
Connection Drawing(s)	04

Marks:

MODEL NUMBER:	5KS324CAG115A	Estimated Weight:	600 Lbs
Outline Drawing:	225B4700AY	Time Rating:	CONT
Connection Diagram:	GEM2034E-FIG9	Enclosure:	TEFC
Instruction Book:	GEI-56128	Encl Construction:	XP
Design Code:	32ED0048A	Ambient Max(°C):	40
Type:	KS	Alt Ambient Max(°C):	XX
Frame:	324TS	Insulation Class:	F
Phases:	3	NEMA Design:	B
Poles:	2	Nominal Efficiency:	92.4 %
Output Power:	40HP 29.6KW	Guaranteed Efficiency:	91.0
RPM:	3550	3/4 Load Efficiency:	92.6
Voltage:	230/460	KVA Code:	G
Hertz:	60	Max KVAR:	17.1
Amps - FL:	98.8/49.4	Power Factor:	82.0
Service Factor:	1.0	Bearing - DE:	6312ZC3
Alt Service Factor:	XX	Bearing - ODE:	6312ZC3

Enclosure is Totally Enclosed Fan-Cooled

Stamped Nameplate Notes:

EXPLOSION PROOF MOTOR
TEMP CODE T3C
THERMOSTAT LEADS TB1-TB2:TRIP

Additional Information:

STAMP NP249A5571AD AS FOLLOWS:
CL I GR C&D CL II GR F&G
2 POLE, TS SHAFT EXTN
(3)NC THERMOSTAT LEADS TO MAIN CONDUIT BOX
250 Cu. In. CBOX

Performance Characteristics

1st Winding 1st Connection

Design: 32ED0048A

Marks:

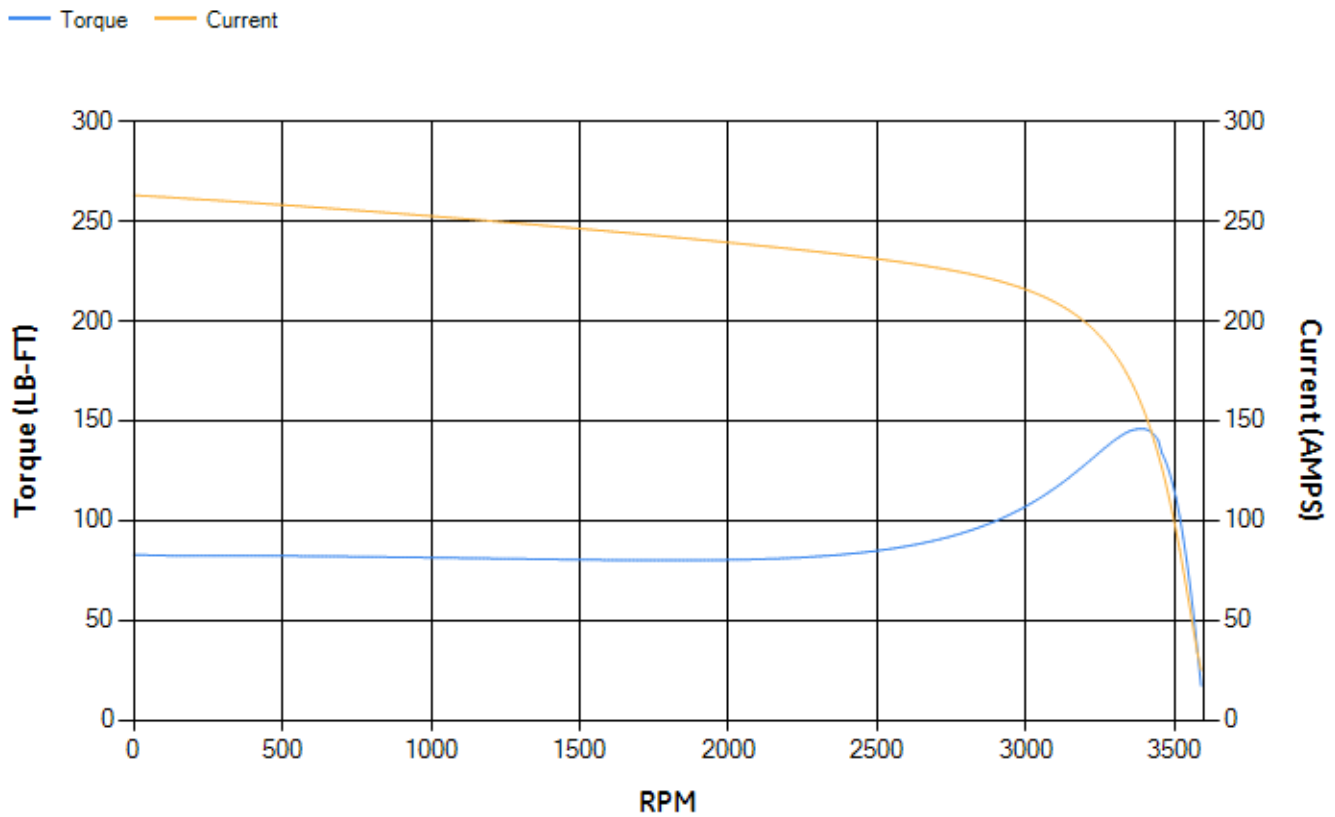
LOAD %	125.0	115.0	100.0	75.0	50.0	25.0	0.0
% EFF	91.81	92.13	92.86	92.61	91.61	86.72	0.00
% PF	83.85	83.29	81.84	77.1	66.76	44.86	5.76
AMPS	60.78	56.1	49.26	39.32	30.61	24.06	20.98

TORQ(FL)#FT	59.22	TORQ(LR)%FL	139.97	TORQ(BD)%FL	246.19
AMPS(LR)	263.02	PF AT START	0.29		

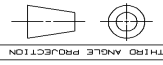
This motor is capable of two cold or one hot start with a maximum connected load inertia of 105 Lb-Ft Sq (4.42 Kg-meter Sq)at 100% voltage, where the load torque varies with the square of the speed. Acceleration time with maximum inertia and the above load type is 17 seconds. Safe stall time at 100% voltage is 43 seconds cold, 20 seconds hot. Rotor inertia is 1.9 Lb-Ft Sq (0.08 Kg-meter Sq).

Open Circuit A-C:	0.418	Short Circuit D-C:	0.022
Short Circuit A-C:	0.03	X/R Ratio:	8.269
Stator Slots:	48	Rotor Slots:	38

Speed Torque Current Curve (First Connection, First Speed)



Marks:

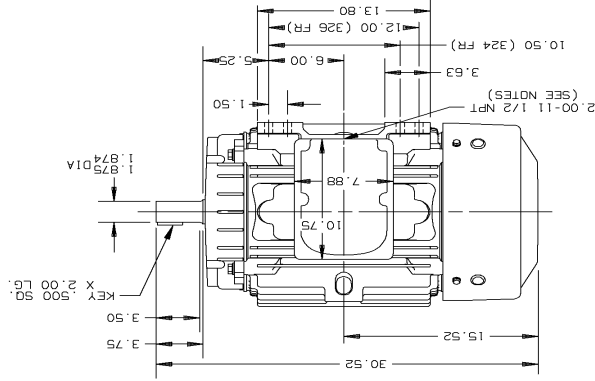
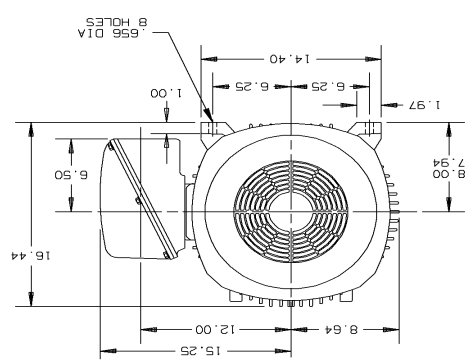


THIRD ANGLE PROJECTION

- NOTES:
1. CONDUIT BOX MAY BE PLACED WITH THE ENTRANCE DOWN, UP, OR ON EITHER SIDE
 2. F-1 ASM AS SHOWN
 3. F-2 ASM HAS CONDUIT BOX ON OPPOSITE SIDE

APPROVED REVISIONS:
 DATE: 01/30/92
 DRAWN BY: N. R. BURK
 CHECKED BY: N. R. B.
 ENGR'G: 25
 19880
 01/30/92
 250 CU. IN. CONDUIT BOX 5K324CAG115A
 225B4700AY

SCALE: .15	SHEET: 1 OF 1
CAD NO: DM1320:225B4700AY	SIZE: 11.5
DATE: 01/30/92	DMG NO: 225B4700AY
250 CU. IN. CONDUIT BOX 5K324CAG115A 324/326TS FR TFC OUTFLINE (XP) Fort Wayne, Indiana GE Motors METRIC EQUIVALENT 225B4700BA	
SIGNATURES: DATE	



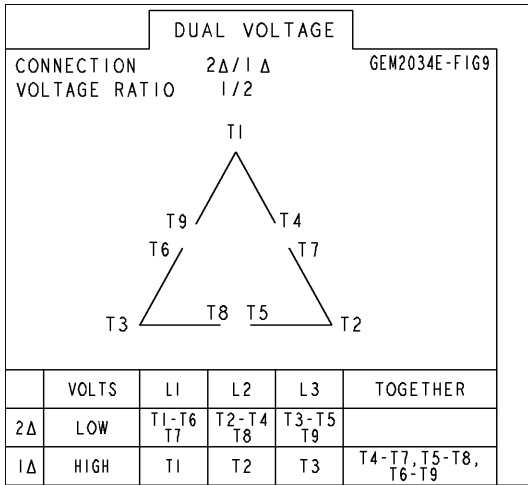
REVISIONS

REV	DESCRIPTION	DATE	APPROVED
1	ADDED METRIC EQUIV M8B	02/13/92	

DMG NO: 225B4700AY

Marks:

Connection Diagram
GEM2034E-FIG9



Thermostat Connection
3027JE-2

FIG. 2
THERMOSTAT CONN.

