

Product Information Packet

January 13, 2017

Data shown is for the current revision model #. Ensure your nameplate model # matches.

| | |
|----------------------------|-----------------------|
| Model Number: | 5KS256DAE7005B |
| Catalog Number: | V4600 |
| Instruction Manual: | GEK-95353 |
| Connection Diagram: | GEM2034E-FIG9 |
| Outline Drawing: | 4002B5825NMP5212 |

| Accessory Connection Diagrams | | | |
|-------------------------------|------|------------------------------|-----------|
| Bearing Thermocouple: | None | Heater: | 3027JE-1C |
| RTD: | None | Thermistor: | None |
| Thermostat: | None | Winding Thermocouple: | None |
| Bearing RTD: | None | | |

Table of Contents

| | |
|-----------------------------|----|
| Specification | 01 |
| Performance Characteristics | 02 |
| Outline Drawing | 03 |
| Connection Drawing(s) | 04 |
| Spare parts | 05 |



Marks:

| | | | |
|----------------------------|-----------------------|-------------------------------|-----------|
| MODEL NUMBER: | 5KS256DAE7005B | Estimated Weight: | 315 Lbs |
| Outline Drawing: | 4002B5825NMP5212 | Time Rating: | CONT |
| Connection Diagram: | GEM2034E-FIG9 | Enclosure: | WPI |
| Instruction Book: | GEK-95353 | Encl Construction: | OPEN |
| Design Code: | 25BD3054A | Ambient Max(°C): | 40 |
| Type: | KS | Alt Ambient Max(°C): | -- |
| Frame: | L256TP12 | Insulation Class: | H |
| Phases: | 3 | NEMA Design: | B |
| Poles: | 6 | Nominal Efficiency: | 91.7 % |
| Output Power: | 10HP 7.4KW | Guaranteed Efficiency: | 90.2 |
| RPM: | 1170 | 3/4 Load Efficiency: | 92.7 |
| Voltage: | 230/460 | KVA Code: | H |
| Hertz: | 60 | Max KVAR: | 3.4 |
| Amps - FL: | 25.0/12.5 | Power Factor: | 81.5 |
| Service Factor: | 1.15 | Bearing - DE: | 7309 |
| Alt Service Factor: | -- | Bearing - ODE: | 6209-2ZC3 |

Enclosure is Weather Protected One

Stamped Nameplate Notes:

PREMIUM EFFICIENT MOTOR
 NEMA ENCL WPI AND CSA ENCL DP
 ROT CCW FACING ODE LEAD/PH SEQUENCE 1-2-3/1-2-3
 HTR LDS HE1-HE2 115V 60W
 INVERTER DUTY PER NEMA MG1 PART 31
 ALTERNATE RATING FOR PWM CONTROL:
 1.0 SF VAR TORQUE RANGE 30-60 HZ
 SUITABLE FOR 7.5HP, 190/380V,
 50 HZ WITH 22.8/11.4AMPS AND 975 RPM AT 1.0 SF

Additional Information:

6P - TP EXTN
 C/BOX 137 CU IN-1.25 NPT
 AUX LEADS EXIT WITH MOTOR LEADS
 RCF 5000 CPM, STATIC DEFLECTION .0014 INCHES &
 CENTER OF GRAVITY 10.75 INCHES
 HOLLOW SHAFT HIGH THRUST
 OIL RESISTANT SLEEVING ON LEADS
 BEARING LIFE 8760 HOURS AT 2958 LB THRUST
 BALL TYPE COUPLING
 COUPLING WILL BE ORDERED SEPARATELY
 DP STOCK 10/21/2016
 ENGINEERED BY: BALASUBRAMANIANH/BILURP

Performance Characteristics

1st Winding 1st Connection

Design: 25BD3054A

Marks:

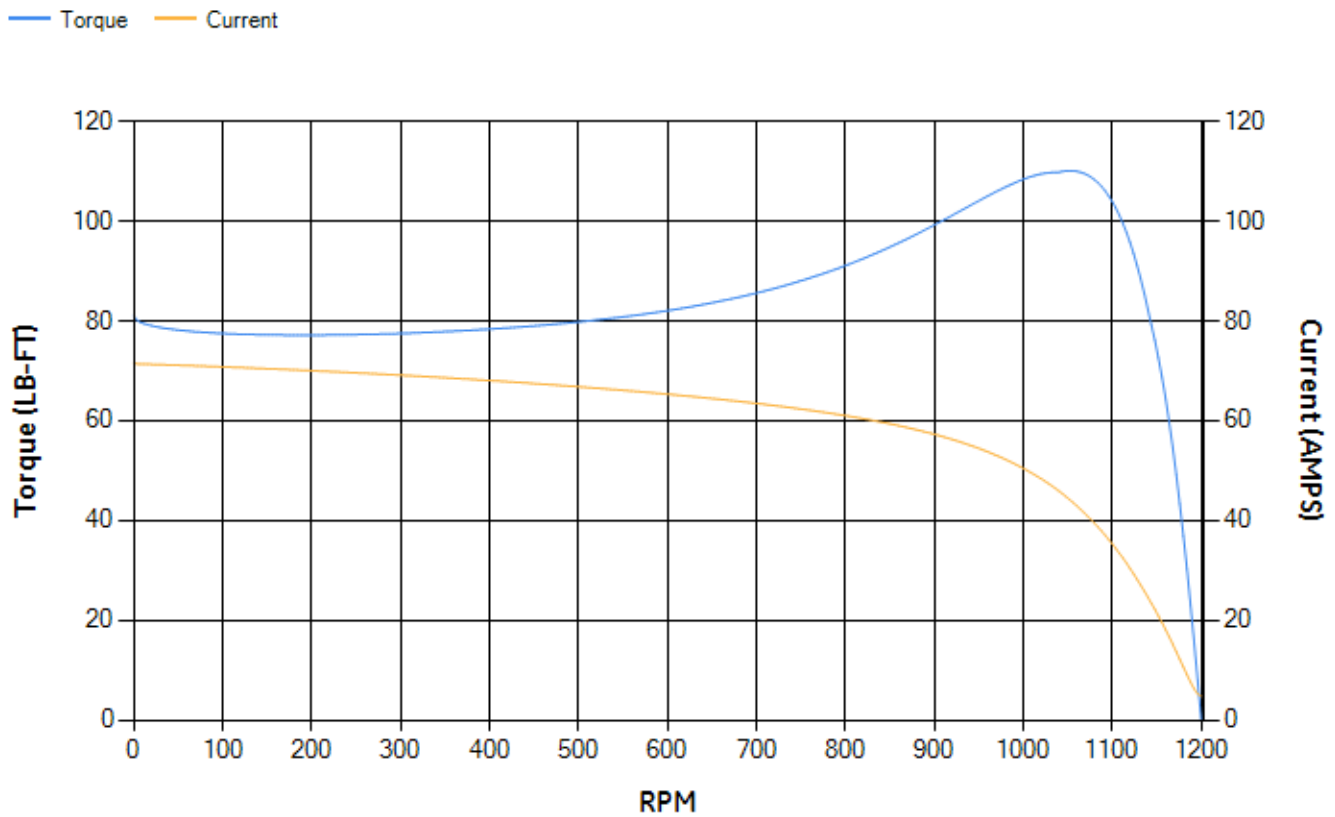
| LOAD % | 125.0 | 115.0 | 100.0 | 75.0 | 50.0 | 25.0 | 0.0 |
|--------|-------|-------|-------|-------|-------|-------|------|
| % EFF | 90.3 | 90.93 | 91.93 | 92.67 | 92.79 | 90.27 | 0.00 |
| % PF | 83.1 | 82.78 | 81.73 | 77.69 | 68.18 | 46.37 | 4.33 |
| AMPS | 15.59 | 14.3 | 12.46 | 9.75 | 7.4 | 5.59 | 4.72 |

| | | | | | |
|--------------------|-------|--------------------|--------|--------------------|--------|
| TORQ(FL)#FT | 44.83 | TORQ(LR)%FL | 180.81 | TORQ(BD)%FL | 243.59 |
| AMPS(LR) | 71.42 | PF AT START | 0.39 | | |

This motor is capable of two cold or one hot start with a maximum connected load inertia of 1173 Lb-Ft Sq (49.38 Kg-meter Sq)at 100% voltage, where the load torque varies with the square of the speed. Acceleration time with maximum inertia and the above load type is 63 seconds. Safe stall time at 100% voltage is 141 seconds cold, 108 seconds hot. Rotor inertia is 2.33 Lb-Ft Sq (0.1 Kg-meter Sq).

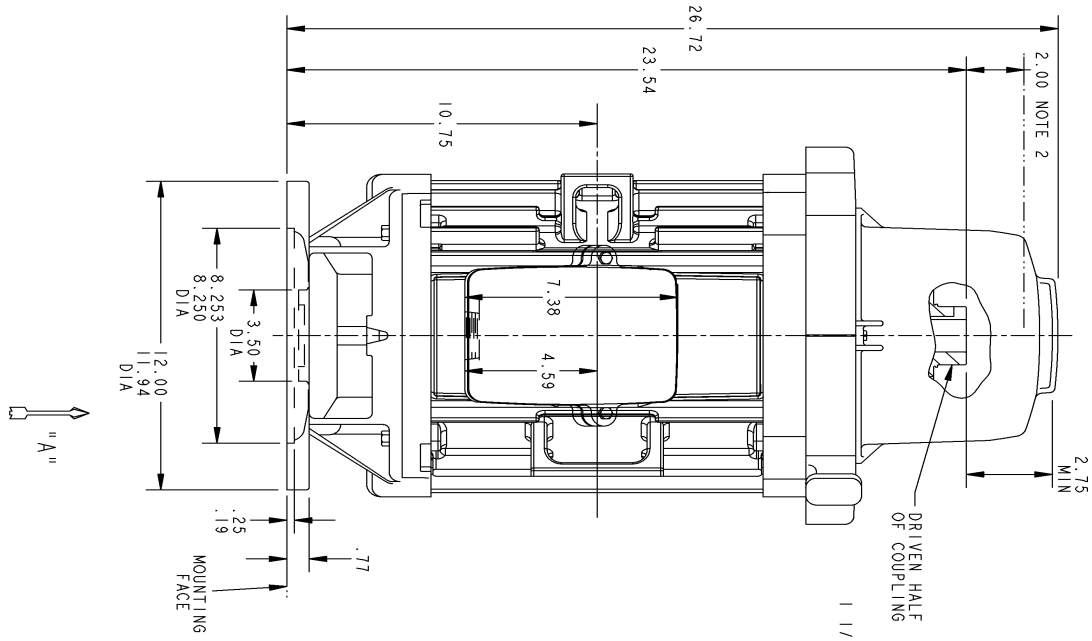
| | | | |
|---------------------------|-------|---------------------------|-------|
| Open Circuit A-C: | 0.288 | Short Circuit D-C: | 0.013 |
| Short Circuit A-C: | 0.016 | X/R Ratio: | 4.953 |
| Stator Slots: | 54 | Rotor Slots: | 42 |

Speed Torque Current Curve (First Connection, First Speed)

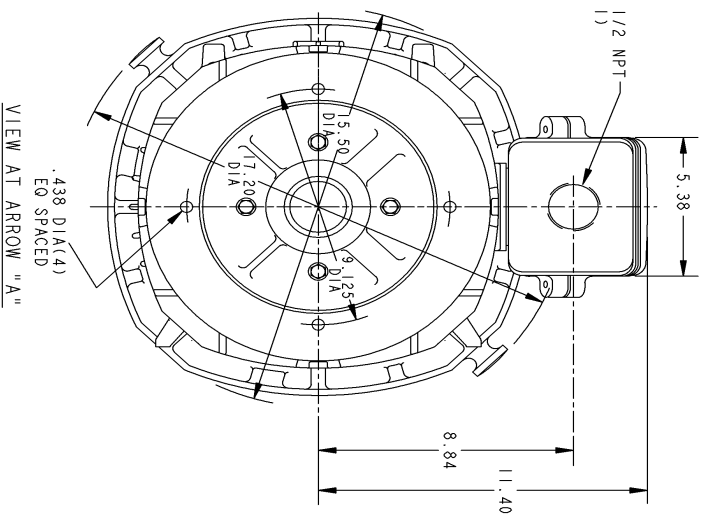


NAME:320002276 OBJECT:4002B5825NMP5212 DATE:17-Feb-09 17:58:31

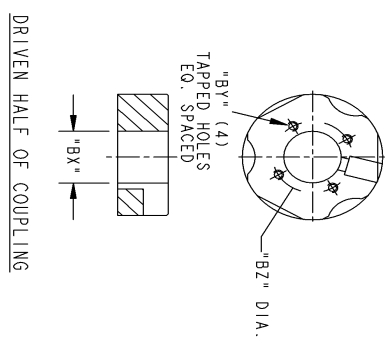
Marks:



NOTE 1: CONDUIT BOX MAY BE ASSEMBLED WITH ENTRANCE UP, DOWN, OR TO EITHER SIDE.
 NOTE 2: THE TOTAL HEIGHT OF PUMP SHAFT & LOCKING NUT ABOVE TOP OF COUPLING, MUST NOT EXCEED THIS DIMENSION.



| | | | | |
|------------|-----|----|--|------------------|
| CAD NO. | | GE | PETERBOROUGH MOTOR PLANT | 4002B5825NMP5212 |
| REF. | | | MOTOR PLANT | CONT ON SHIT. - |
| PLOT CLASS | | | TITLE | SHT. NO. 1 |
| PLOT SCALE | .25 | | INDUCTION MOTOR OUTLINE | |
| | | | FIRST MADE FOR FR250 WP-1 STANDARD "P" BASE VERTICAL | |
| | | | HOLLOW SHAFT - HIGH THRUST | (BD-12) |



| COUPLING KIT | GR. | "BY" | "BZ" | BORE DIA. | "BY" | "BZ" | KEYWAY "W" | "D" |
|---------------------------------------|-----|--------|-------|-----------|-------|-------|------------|------|
| 4002B5825A4 NON-REVERSE | 1 | 1/4-20 | 1.750 | 1.252 | 1.251 | 1.251 | .290 | .125 |
| | 2 | | | 1.188 | 1.188 | 1.188 | | |
| | 3 | | | 1.001 | 1.001 | 1.001 | | |
| 4002B5825A8 BOLTED OR SELF-RELEASE | 4 | #10-32 | 1.375 | .876 | .876 | .876 | .188 | .094 |
| | 5 | | | .751 | .751 | .751 | | |
| | 6 | | | 1.252 | 1.252 | 1.252 | | |
| | 7 | 1/4-20 | 1.750 | 1.251 | 1.251 | 1.251 | .375 | .188 |

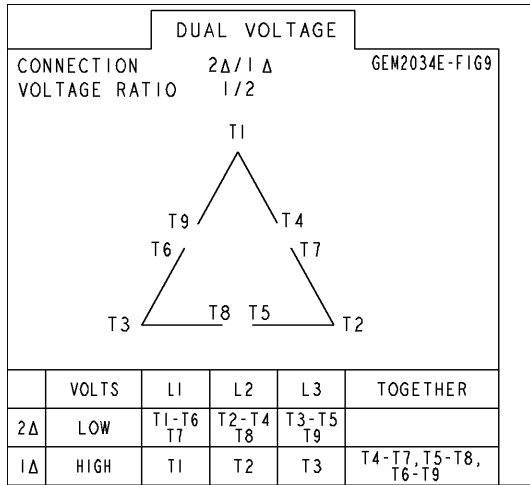
| | | | | | | | |
|-----|---|---------|----------|--------------|---------|--------|-----------|
| 2. | ISAC NO:409-0117 | PRADDEP | 02/11/09 | LANSHMI | DRAWN | NAME | DATE |
| 1. | CORRECTED THE DRAWING NUMBER IN THE TOP BLOCK | | 08/29/03 | BS.PRAASHNTH | CHECKED | MALLIK | JUN 08/03 |
| REV | DESCRIPTION | DATE | INT'L | | | SANJAY | JUN 08/03 |

CAD DRAWING - NO MANUAL REVISIONS PERMITTED

4002B5825NMP5212
CONT ON SHIT. -
SHT. NO. 1

Marks:

Connection Diagram
GEM2034E-FIG9



Heater Connection
3027JE-1C



| End shield Assembly | | |
|---------------------|---------------|----------------|
| Part Description | DE Side Part# | ODE Side Part# |
| End Shield | 128D6125PA1 | 128D6128PA1 |
| Bearing | 235A2507AC01 | 235A2507EE01 |
| Slinger/Inproseal | 235A2300FL3 | |

| Fan & Fan Cover Assembly | |
|--------------------------|-------|
| Part Description | Part# |
| Fan | |
| Fan Cover | |

| Conduit & Accessories Box Assembly | |
|------------------------------------|-----------------|
| Part Description | Part# |
| Conduit Box | 4002B5728PA-G04 |

| Mechanical Accessories | |
|------------------------|-------|
| Part Description | Part# |
| Brake | |
| Tachometer | |