

Product Information Packet

January 12, 2017

Data shown is for the current revision model #. Ensure your nameplate model # matches.

Model Number:	5KS326CAG208A
Catalog Number:	E9287
Instruction Manual:	GEI-56128
Connection Diagram:	GEM2034E-FIG7
Outline Drawing:	225B4700AA

Accessory Connection Diagrams			
Bearing Thermocouple:	None	Heater:	None
RTD:	None	Thermistor:	None
Thermostat:	3027JE-2	Winding Thermocouple:	None
Bearing RTD:	None		

Table of Contents	
Specification	01
Performance Characteristics	02
Outline Drawing	03
Connection Drawing(s)	04

Marks:

MODEL NUMBER:	5KS326CAG208A	Estimated Weight:	740 Lbs
Outline Drawing:	225B4700AA	Time Rating:	CONT
Connection Diagram:	GEM2034E-FIG7	Enclosure:	TEFC
Instruction Book:	GEI-56128	Encl Construction:	XP
Design Code:	32ED1068AA	Ambient Max(°C):	40
Type:	KS	Alt Ambient Max(°C):	XX
Frame:	326T	Insulation Class:	F
Phases:	3	NEMA Design:	A
Poles:	4	Nominal Efficiency:	94.5 %
Output Power:	50HP 37KW	Guaranteed Efficiency:	93.6
RPM:	1780	3/4 Load Efficiency:	95.1
Voltage:	460	KVA Code:	G
Hertz:	60	Max KVAR:	18.6
Amps - FL:	61.9	Power Factor:	80.0
Service Factor:	1.0	Bearing - DE:	6312ZC3
Alt Service Factor:	XX	Bearing - ODE:	6312ZC3

Enclosure is Totally Enclosed Fan-Cooled

Stamped Nameplate Notes:

EXPLOSION PROOF MOTOR
TEMP CODE T3C
THERMOSTAT LEADS TB1-TB2:TRIP

Additional Information:

STAMP NP249A5571AD AS FOLLOWS:
CL I GR C&D CL II GR F&G
4 POLE, T SHAFT EXTN
(3)NC THERMOSTAT LEADS TO MAIN CONDUIT BOX
250 Cu. In. CBOX

Performance Characteristics

1st Winding 1st Connection

Design: 32ED1068AA

Marks:

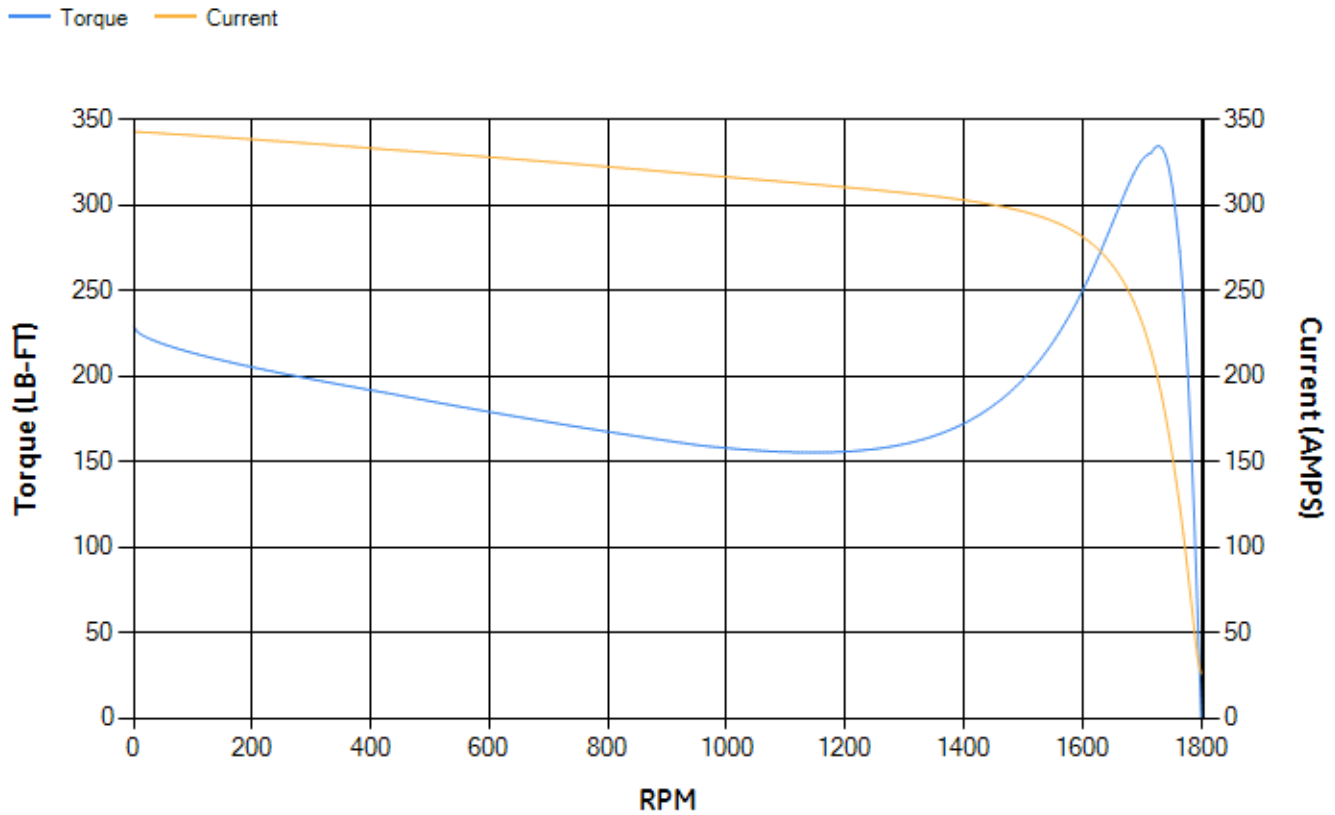
LOAD %	125.0	115.0	100.0	75.0	50.0	25.0	0.0
% EFF	94.4	94.63	95.1	95.07	94.59	91.79	0.00
% PF	81.86	81.33	79.95	75.24	64.92	42.86	3.51
AMPS	75.69	69.92	61.56	49.06	38.1	29.74	25.82

TORQ(FL)#FT	147.5	TORQ(LR)%FL	155.32	TORQ(BD)%FL	223.25
AMPS(LR)	342.86	PF AT START	0.29		

This motor is capable of two cold or one hot start with a maximum connected load inertia of 927 Lb-Ft Sq (39.03 Kg-meter Sq)at 100% voltage, where the load torque varies with the square of the speed. Acceleration time with maximum inertia and the above load type is 38 seconds. Safe stall time at 100% voltage is 76 seconds cold, 45 seconds hot. Rotor inertia is 6.85 Lb-Ft Sq (0.29 Kg-meter Sq).

Open Circuit A-C:	0.532	Short Circuit D-C:	0.034
Short Circuit A-C:	0.036	X/R Ratio:	12.688
Stator Slots:	48	Rotor Slots:	38

Speed Torque Current Curve (First Connection, First Speed)



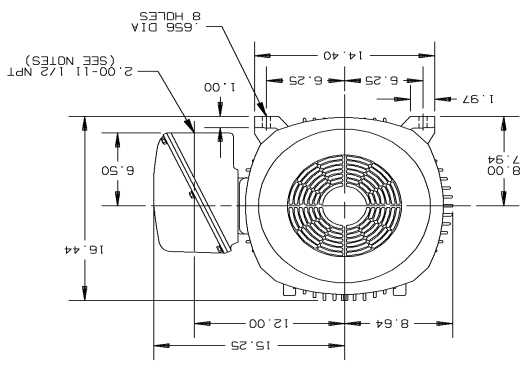
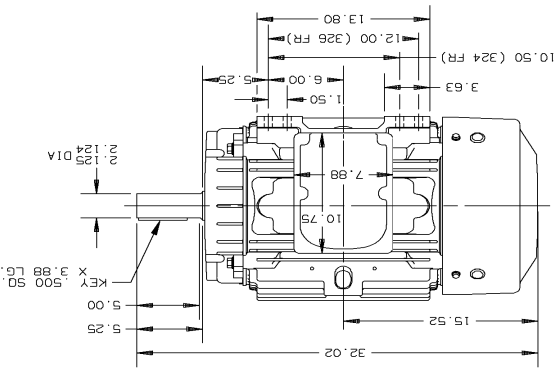
Marks:

SCALE: 1:15	SHEET: 1 OF 1
CAD NO. F320:225B4700AA	SIZE: F320:225B4700AA
DATE: 04/12/82	324/3261 FR TFFC, 250 CU. IN. CONDUIT BOX
GE Motors	
OUTLINE (XP)	
Fort Wayne, Indiana	
DRAWN BY: MT DUFFS 04/06/82	
CHECKED BY: []	
ENGINEER: []	
DESIGNED BY: []	
DIMENSIONS ARE IN INCHES	
UNLESS OTHERWISE SPECIFIED	
SIGNATURES: DATE	

THIRD ANGLE PROJECTION

NOTES:

- ENTRANCE DOWN, UP, OR ON EITHER SIDE
- F-1 ASM HAS CONDUIT BOX ON OPPOSITE SIDE
- F-2 ASM HAS CONDUIT BOX ON OPPOSITE SIDE



REV	DESCRIPTION	DATE	APPROVED
1	ADDED METRIC EQUIVALENT TM	09/21/83	
2	910-963 CLF	10/17/91	

SIZE: F320:225B4700AA SHEET: 1 OF 2

METRIC EQUIV.: 225B4700AD

Marks:

Connection Diagram
GEM2034E-FIG7



Thermostat Connection
3027JE-2

FIG. 2
THERMOSTAT CONN.

