

Product Information Packet

November 9, 2016

Data shown is for the current revision model #. Ensure your nameplate model # matches.

Model Number:	5KS256STE205F2RG3
Catalog Number:	M7567
Instruction Manual:	GEI-M1031
Connection Diagram:	GEM2034E-FIG210
Outline Drawing:	358B6272AD

Accessory Connection Diagrams			
Bearing Thermocouple:	None	Heater:	None
RTD:	None	Thermistor:	None
Thermostat:	None	Winding Thermocouple:	None
Bearing RTD:	None		

Table of Contents	
Specification	01
Performance Characteristics	02
Outline Drawing	03
Connection Drawing(s)	04



Marks:

MODEL NUMBER:	5KS256STE205F2RG3	Estimated Weight:	321 Lbs
Outline Drawing:	358B6272AD	Time Rating:	CONT
Connection Diagram:	GEM2034E-FIG210	Enclosure:	TEFC
Instruction Book:	GEI-M1031	Encl Construction:	SD
Design Code:	25AD1015A	Ambient Max(°C):	40
Type:	KS	Alt Ambient Max(°C):	--
Frame:	256T	Insulation Class:	F
Phases:	3	NEMA Design:	A
Poles:	4	Nominal Efficiency:	93 %
Output Power:	20HP 14.8KW	Guaranteed Efficiency:	91.7
RPM:	1760	3/4 Load Efficiency:	93.2
Voltage:	230/460	KVA Code:	G
Hertz:	60	Max KVAR:	5.4
Amps - FL:	47.4/23.7	Power Factor:	85
Service Factor:	1.15	Bearing - DE:	6310ZZ
Alt Service Factor:	--	Bearing - ODE:	6208ZZ

Enclosure is Totally Enclosed Fan-Cooled

Stamped Nameplate Notes:

USABLE AT 200V @ 20 HP,53.8 AMPS @ 1.0 SF

LRA: 308/154

50HZ DATA: 15 HP,200/400V,47.4/23.7 AMPS @ 1.15 SF

50HZ DATA: 20 HP,200/400V,54.2/27.1 AMPS @ 1.00 SF

GREASE TYPE: SHELL ALVANIA R3 LITHIUM GREASE

Additional Information:

CONDUIT BOX VOLUME (CU IN): 100.5

CONDUIT BOX MATERIAL: CAST IRON

INVERTER DUTY PER NEMA MG1 PART 31

FOR VARIABLE TORQUE LOADS

BAM 1/12



Performance Characteristics

1st Winding 1st Connection

Design: 25AD1015A

Marks:

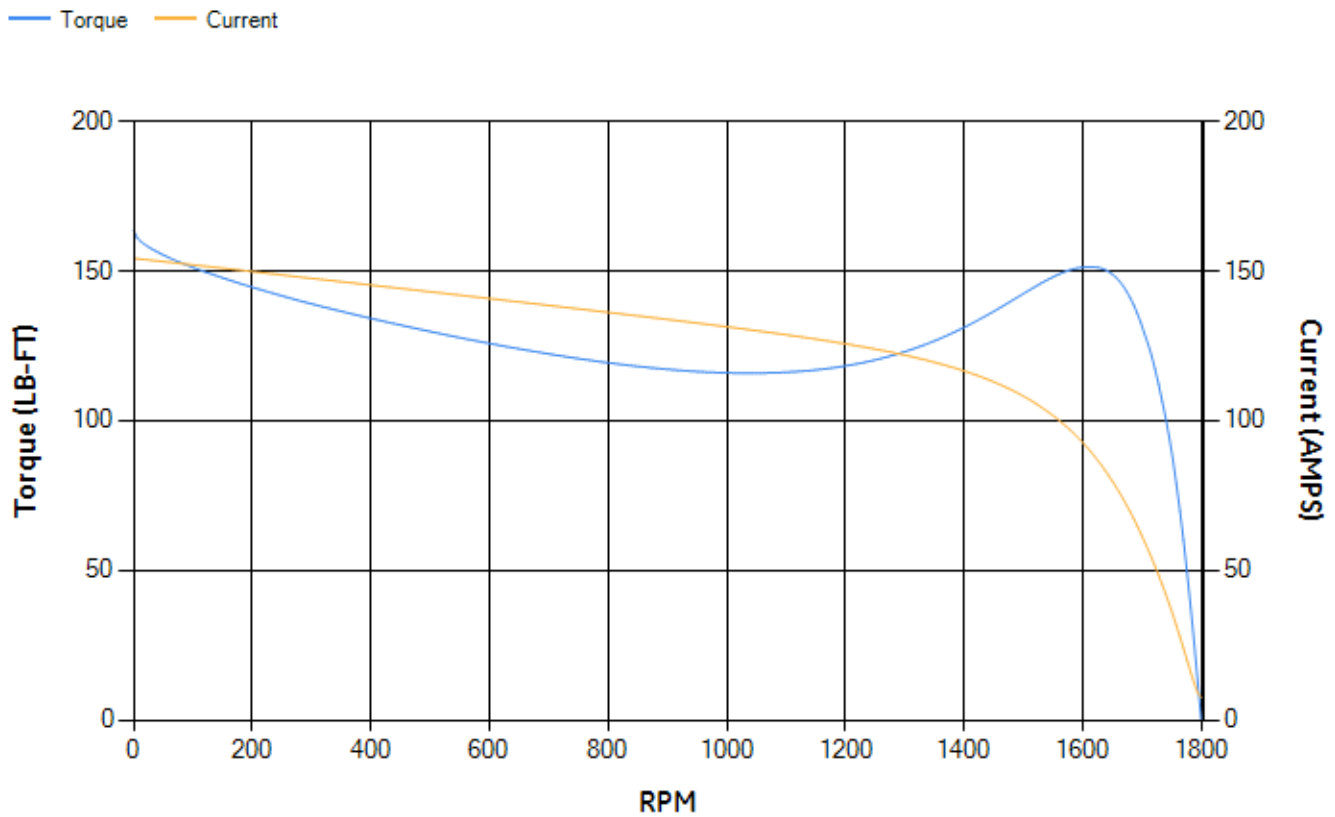
LOAD %	125.0	115.0	100.0	75.0	50.0	25.0	0.0
% EFF	91.42	91.92	92.75	93.23	93.11	90.33	0.00
% PF	85.79	85.76	85.25	82.54	75.09	54.74	5.63
AMPS	29.83	27.31	23.67	18.24	13.39	9.46	7.46

TORQ(FL)#FT	59.58	TORQ(LR)%FL	274.62	TORQ(BD)%FL	252.27
AMPS(LR)	154.25	PF AT START	0.45		

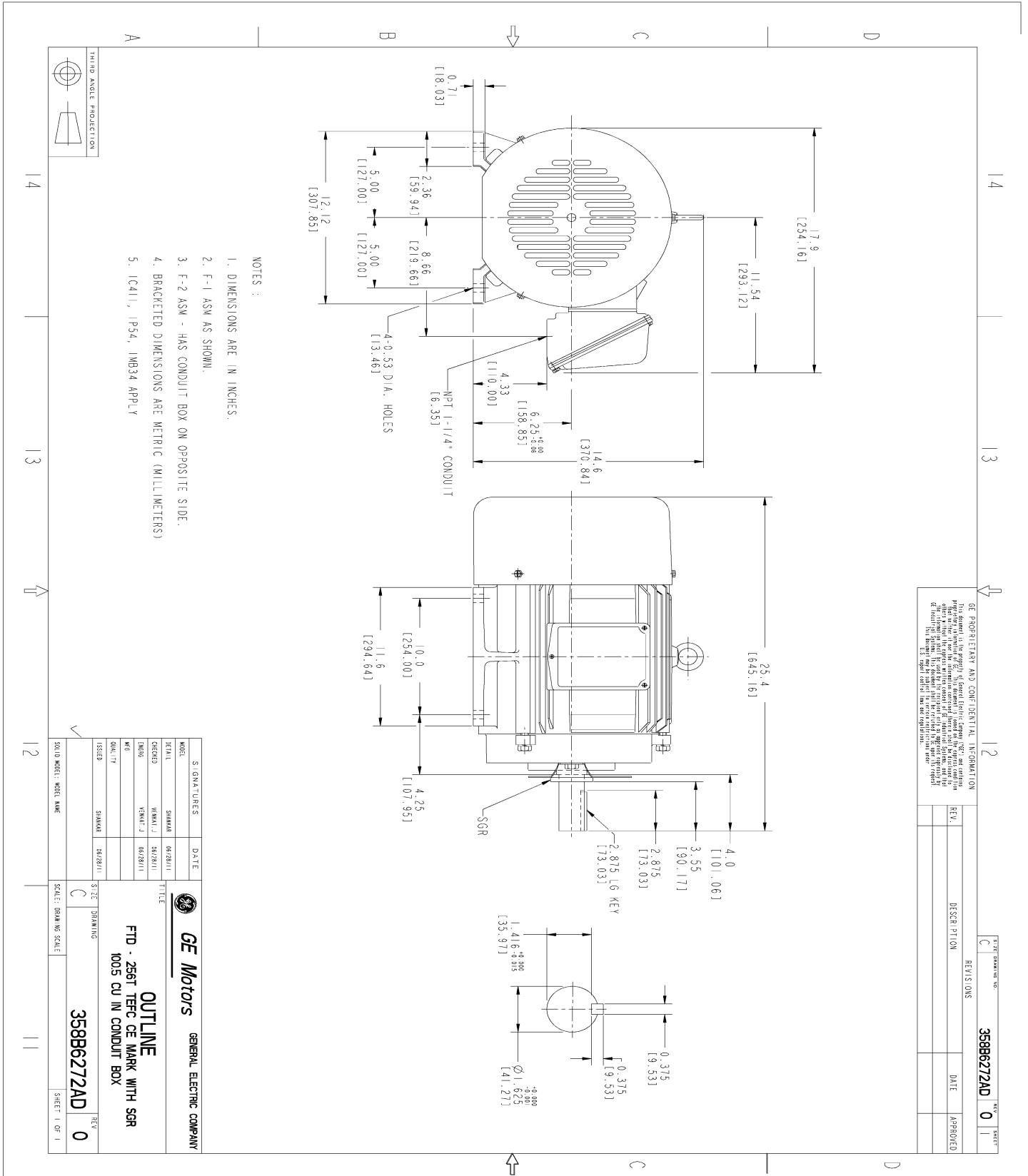
This motor is capable of two cold or one hot start with a maximum connected load inertia of 703 Lb-Ft Sq (29.6 Kg-meter Sq)at 100% voltage, where the load torque varies with the square of the speed. Acceleration time with maximum inertia and the above load type is 37 seconds. Safe stall time at 100% voltage is 63 seconds cold, 44 seconds hot. Rotor inertia is 2.39 Lb-Ft Sq (0.1 Kg-meter Sq).

Open Circuit A-C:	0.404	Short Circuit D-C:	0.016
Short Circuit A-C:	0.017	X/R Ratio:	6.012
Stator Slots:	48	Rotor Slots:	40

Speed Torque Current Curve (First Connection, First Speed)



Marks:



- NOTES :
1. DIMENSIONS ARE IN INCHES.
 2. F-1 ASW AS SHOWN.
 3. F-2 ASW - HAS CONDUIT BOX ON OPPOSITE SIDE.
 4. BRACKETED DIMENSIONS ARE METRIC (MILLIMETERS)
 5. IC411, IP54, IMB34 APPLY

GE PROPRIETARY AND CONFIDENTIAL INFORMATION

This document is the property of General Electric Company ("GE") and contains information that is confidential and/or proprietary to GE. It is intended for use only by the individual or organization to whom it is issued. It is not to be distributed, copied, or otherwise used without the express written consent of GE. The drawings are subject to change without notice.

REV.	DESCRIPTION	DATE	APPROVED

SIGNATURES		DATE
MODEL	SHAMAR	04/28/11
DESIGN	YUNAKI J	04/28/11
DRG	YUNAKI J	04/28/11
CHKD	SHAMAR	04/28/11

SCALE: DRAWING SCALE

358B6272AD

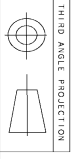
0

GE Motors GENERAL ELECTRIC COMPANY

OUTLINE

FTD - 256T TFC GE MARK WITH SGR

1005 CU IN CONDUIT BOX

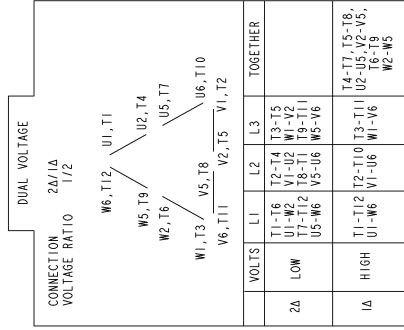


14 13 12 11

14 13 12 11

Marks:

Connection Diagram
GEM2034E-FIG210



NAME:501452353 OBJECT:GEM2034E-FIG210 DATE:25-Feb-08 14:03:35