

Product Information Packet

November 8, 2016

Data shown is for the current revision model #. Ensure your nameplate model # matches.

Model Number:	5KS364SAA404D3
Catalog Number:	M9766
Instruction Manual:	GEI-56128
Connection Diagram:	GEM2034E-FIG7
Outline Drawing:	239C6200AA

Accessory Connection Diagrams			
Bearing Thermocouple:	None	Heater:	None
RTD:	None	Thermistor:	None
Thermostat:	None	Winding Thermocouple:	None
Bearing RTD:	None		

Table of Contents

Specification	01
Performance Characteristics	02
Outline Drawing	03
Connection Drawing(s)	04
Spare parts	05



Marks:

MODEL NUMBER:	5KS364SAA404D3	Estimated Weight:	960 Lbs
Outline Drawing:	239C6200AA	Time Rating:	CONT
Connection Diagram:	GEM2034E-FIG7	Enclosure:	TEFC
Instruction Book:	GEI-56128	Encl Construction:	X\$D
Design Code:	36BD4024B	Ambient Max(°C):	40
Type:	KS	Alt Ambient Max(°C):	60
Frame:	364T	Insulation Class:	H
Phases:	3	NEMA Design:	B
Poles:	8	Nominal Efficiency:	91.7 %
Output Power:	30HP 22.2KW	Guaranteed Efficiency:	91.0
RPM:	885	3/4 Load Efficiency:	92.2
Voltage:	575	KVA Code:	G
Hertz:	60	Max KVAR:	17.3
Amps - FL:	34.7	Power Factor:	70.5
Service Factor:	1.15	Bearing - DE:	6314ZC3
Alt Service Factor:	1.00	Bearing - ODE:	6314ZC3

Enclosure is Totally Enclosed Fan-Cooled

Stamped Nameplate Notes:

STAMP NP249A5564P051 AS BELOW:
 MODEL:5KS364SAA404D3 S/N: XXX
 CSA CERTIFIED CSA09.2216219 FOR EX NA IIC 200 C GC
 CL 1 ZONE2 AEX NA IIC 200C;CL 1 DIV2 GRP ABCD 200C
 IN -40C <= AMB <= 40C, 1.0 SF ON SINE-WAVE PWR
 SURF TEMP 260C AT 1.15SF ON SINE-WAVE PWR
 OR 200C VT OR 230C CT OR 200C CHP PWM CONTROL
 ALTERNATE RATING FOR PWM CONTROL 1.0SF 40C AMB
 VT 0 - 60 HZ, CT 6-60 HZ, CHP 60-90 HZ.

Additional Information:

8P - T EXTN
 346 CU IN - 3.00" NPT
 OIL RESISTANT SLEEVING ON LEADS
 F1 MOUNTING

Performance Characteristics

1st Winding 1st Connection

Design: 36BD4024B

Marks:

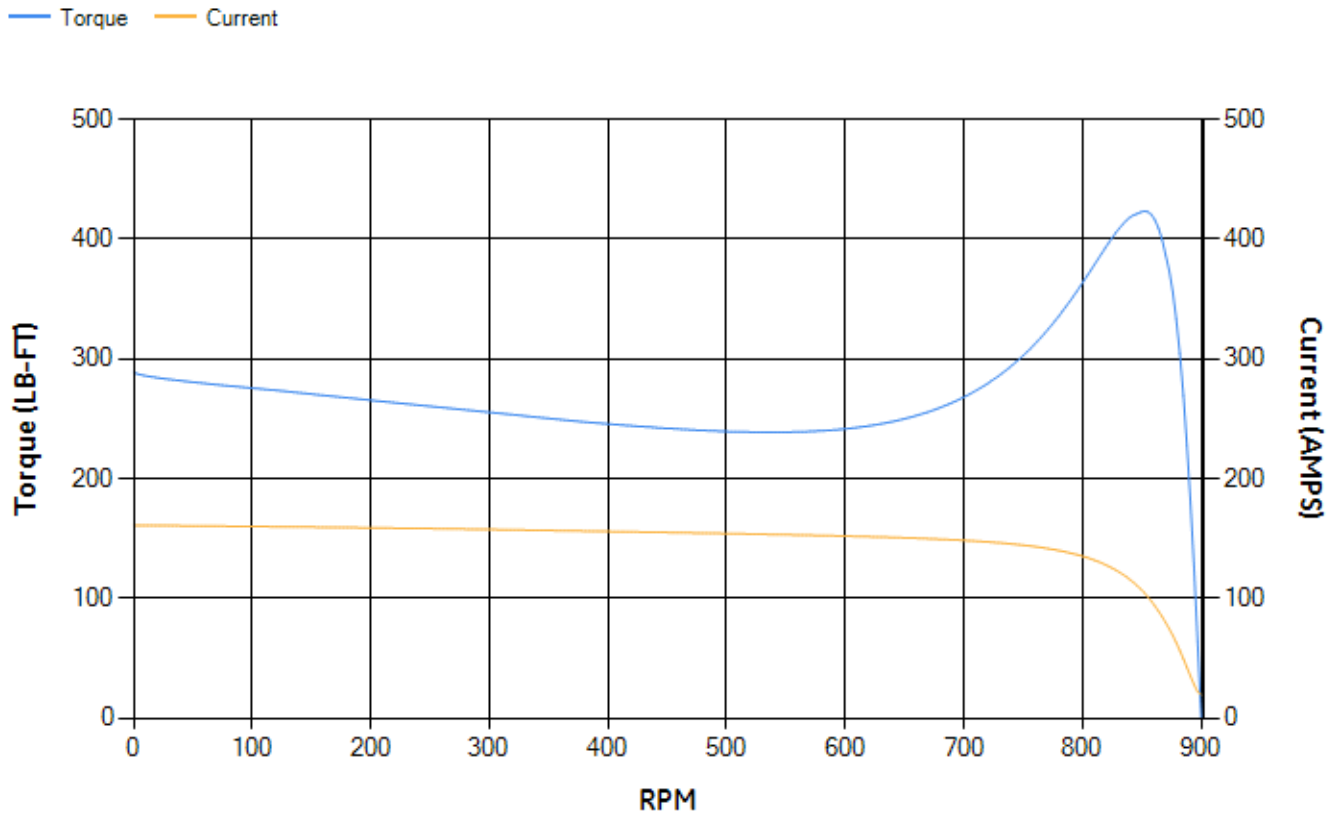
LOAD %	125.0	115.0	100.0	75.0	50.0	25.0	0.0
% EFF	91.21	91.57	92.17	92.22	91.42	87.06	0.00
% PF	74.69	73.41	70.73	63.46	50.91	30.81	3.29
AMPS	41.21	38.43	34.3	28.79	24.13	20.94	19.36

TORQ(FL)#FT	177.5	TORQ(LR)%FL	162.89	TORQ(BD)%FL	237.04
AMPS(LR)	160.92	PF AT START	0.37		

This motor is capable of two cold or one hot start with a maximum connected load inertia of 3198 Lb-Ft Sq (134.64 Kg-meter Sq)at 100% voltage, where the load torque varies with the square of the speed. Acceleration time with maximum inertia and the above load type is 43 seconds. Safe stall time at 100% voltage is 124 seconds cold, 66 seconds hot. Rotor inertia is 17.26 Lb-Ft Sq (0.73 Kg-meter Sq).

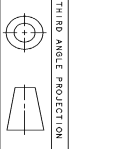
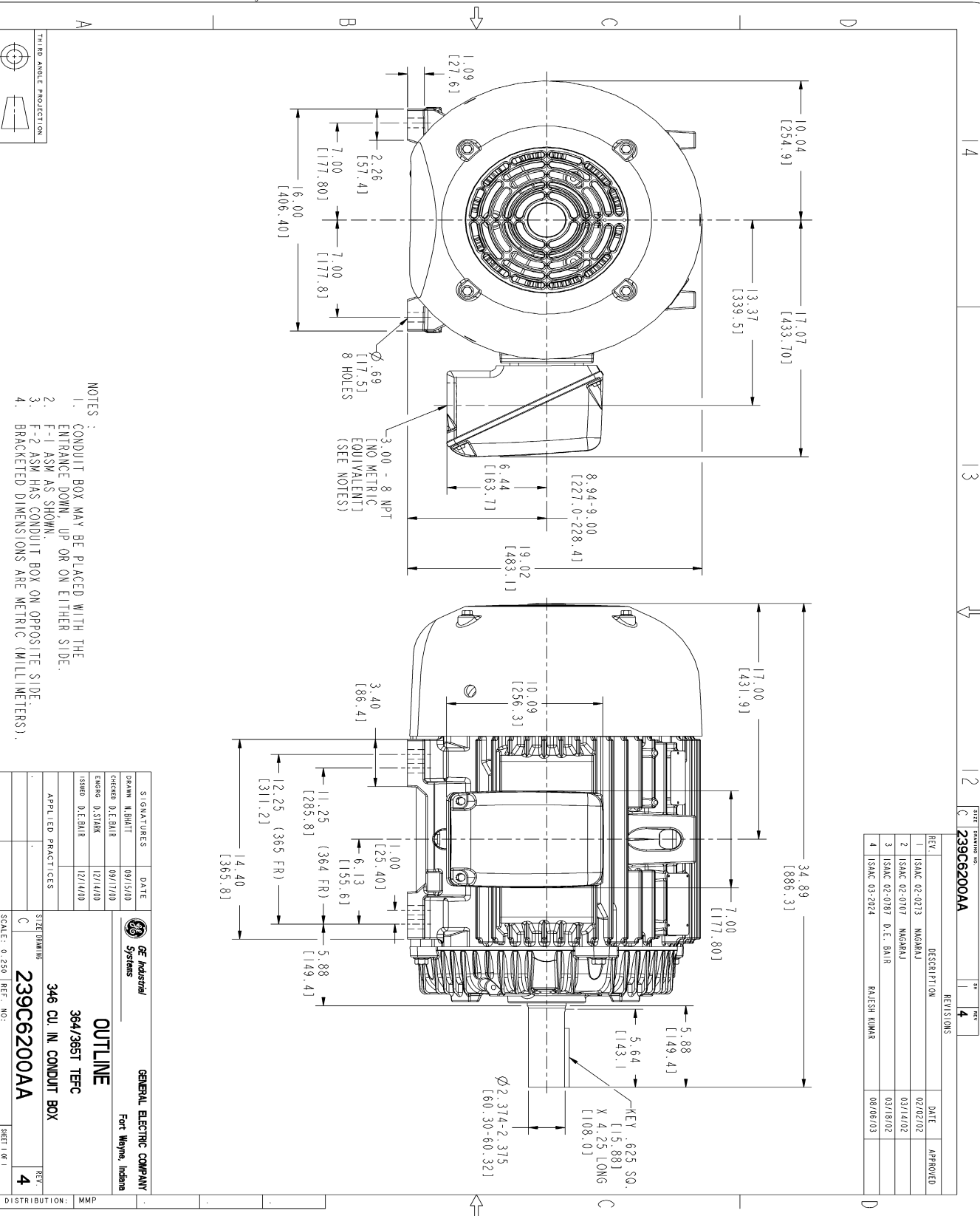
Open Circuit A-C:	0.294	Short Circuit D-C:	0.016
Short Circuit A-C:	0.029	X/R Ratio:	5.847
Stator Slots:	72	Rotor Slots:	58

Speed Torque Current Curve (First Connection, First Speed)



NAME: 103016807 OBJECT: 239C6200AA DATE: 07-Aug-03 23:32:55

Marks:



NOTES:

- CONDUIT BOX MAY BE PLACED WITH THE ENTRANCE DOWN, UP OR ON EITHER SIDE.
- F-1 ASM AS SHOWN.
- F-2 ASM HAS CONDUIT BOX ON OPPOSITE SIDE. BRACKETED DIMENSIONS ARE METRIC (MILLIMETERS).

SIGNATURES	DATE	DESCRIPTION	DATE	APPROVED
DRAWN N. BHATT	09/15/00		02/02/02	
CHECKED D.E. BHAR	09/17/00		03/14/02	
ENGINEER D. STARK	12/14/00		03/18/02	
ISSUED D.E. BHAR	12/14/00		08/06/03	
APPLIED PRACTICES				

GENERAL ELECTRIC COMPANY
Fort Wayne, Indiana

OUTLINE
364/365T TERC
346 CU. IN. CONDUIT BOX

SCALE: 0.250 REF. NO.: 239C6200AA

SHEET 1 OF 1

DISTRIBUTION: MMP

REV.	DESCRIPTION	DATE	APPROVED
1	ISAC 02-0213	02/02/02	
2	ISAC 02-0707	03/14/02	
3	ISAC 02-0787	03/18/02	
4	ISAC 03-2024	08/06/03	

239C6200AA

REV 4

RAJESH KUMAR

Marks:

Connection Diagram
GEM2034E-FIG7



End shield Assembly		
Part Description	DE Side Part#	ODE Side Part#
End Shield	115E4250AA1	115E4250LK1
Bearing	235A2616AA01	235A2616AA01
Slinger/Inproseal	149C4399G05	149C4399G05

Fan & Fan Cover Assembly	
Part Description	Part#
Fan	159C7100G01
Fan Cover	128D6810AA1

Conduit & Accessories Box Assembly	
Part Description	Part#
Conduit Box	149C4429AA2

Mechanical Accessories	
Part Description	Part#
Brake	
Tachometer	