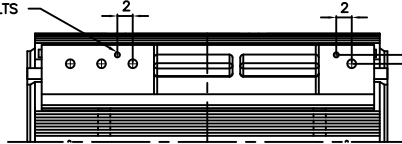


#3/4"-10 UNC 4 PLACES FOR JACKING BOLTS



- NOTES:
1. DIMENSION V REPRESENTS LENGTH OF STRAIGHT PART OF SHAFT
 2. MAIN CONDUIT BOX MAY BE ROTATED IN 90° INCREMENTS
 3. KEY DIMENSIONS EQUAL S x S x 10.00 FOR UZ, S x S x 5.00 FOR US, AND S x S x 3.00 FOR USS (MOTOR SUPPLIED WITH KEY)
 4. MOTOR WEIGHT SHOWN IS MAXIMUM HORSEPOWER IN FRAME
 5. THIS DIMENSION EQUALS 2F FOR 5010USS/US/UZ MOUNTING
 6. THIS DIMENSION EQUALS 2F FOR 5009USS/US/UZ MOUNTING
 7. STANDARD 4~8 POLE PRODUCT USE BI-DIRECTIONAL FAN. OPPOSITE ROTATION AVAILABLE ONLY BY CONNECTION CHANGE
 8. STANDARD 2 POLE PRODUCT USE UNI-DIRECTIONAL FAN. OPPOSITE ROTATION AVAILABLE ONLY BY FAN AND CONNECTION CHANGE

UNITS: INCHES

FRAME SIZE	MOTOR DIMENSIONS											CONDUIT BOX						
	A	B	C	D	G	J	K	M	O	P	T	AA	AB	AC	AE	AF	XL	XN
5009/10/11USS	24.8	42.6	64.2	12.50	1.4	6.3	14.4/7.1	26.8	26.4	32.5	5.0	4.00	31.3	24.0	20.2	8.7	23.4	18.9
5009/10/11US	24.8	42.6	69.8	12.50	1.4	6.3	14.4/7.1	26.8	26.4	32.5	5.0	4.00	31.3	24.0	20.2	8.7	23.4	18.9
5009/10/11UZ	24.8	42.6	75.1	12.50	1.4	6.3	14.4/7.1	26.8	26.4	32.5	5.0	4.00	31.3	24.0	20.2	8.7	23.4	18.9

FRAME SIZE	MOUNTING				SHAFT EXTENSION			KEY SEAT			BEARINGS		MAXIMUM WEIGHT
	E	2F	H	BA	N-W	V	U	R	S	ES	LS	OS	
5009/10/11USS	10.00	28.00/32.00/36.00	1.125	8.50	4.75	4.50	2.375	2.021	0.625	3.03	6313C3	6313C3	5000 lbs.
5009/10/11US	10.00	28.00/32.00/36.00	1.125	8.50	6.25	6.19	3.625	3.134	0.875	5.03	6320C3	6320C3	
5009/10/11UZ	10.00	28.00/32.00/36.00	1.125	8.50	11.62	11.38	4.375	3.817	1.000	10.03	NU324C3	6320C3	

CUSTOMER: _____ MOTOR MODEL NO.: 3506FTAB41E-AR
 P.O. NO.: _____ HP: 350 VOLTAGE: 460 RPM(SYN.): 1200 Hz: 60
 FRAME SIZE: 5011UZ PRODUCT TYPE: TEFC EQP III, EPACT, & HIGH EFFICIENCY
 COMMENTS: _____

TAG NO's: _____

- STANDARD (NO AUX. BOXES)
- RTD AUX. BOX
- SPACE HEATER AUX. BOX
- BEARING RTD's

PER: _____ DATE: _____

TOSHIBA RESERVES THE RIGHT TO MAKE CHANGES OF TECHNICAL IMPROVEMENT AND THE DATA MAY CHANGE WITHOUT NOTICE PRELIMINARY

DO NOT USE FOR CONSTRUCTION, INSTALLATION, OR APPLICATION PURPOSES UNLESS THE DRAWING IS MARKED AS CERTIFIED CERTIFIED

TOSHIBA

TOSHIBA INTERNATIONAL CORPORATION

TOTALLY-ENCLOSED FAN-COOLED
 HORIZONTAL FOOT-MOUNTED
 3 PHASE INDUCTION MOTOR
 F1 ASSEMBLY

XT SERIES

VISIT OUR WEBSITE AT:
www.toshiba.com/ind