

Product Information Packet

January 12, 2017

Data shown is for the current revision model #. Ensure your nameplate model # matches.

Model Number:	5KS511SAA369A
Catalog Number:	Q589
Instruction Manual:	GEI-56128
Connection Diagram:	GEM2034E-FIG7
Outline Drawing:	239C6B00MJ

Accessory Connection Diagrams			
Bearing Thermocouple:	None	Heater:	3027JE-1C
RTD:	None	Thermistor:	None
Thermostat:	None	Winding Thermocouple:	None
Bearing RTD:	None		

Table of Contents	
Specification	01
Performance Characteristics	02
Outline Drawing	03
Connection Drawing(s)	04

Marks:

MODEL NUMBER:	5KS511SAA369A	Estimated Weight:	5393 Lbs
Outline Drawing:	239C6B00MJ	Time Rating:	CONT
Connection Diagram:	GEM2034E-FIG7	Enclosure:	TEFC
Instruction Book:	GEI-56128	Encl Construction:	SD
Design Code:	50BD3180B	Ambient Max(°C):	40
Type:	KS	Alt Ambient Max(°C):	--
Frame:	5011LL	Insulation Class:	F
Phases:	3	NEMA Design:	B
Poles:	6	Nominal Efficiency:	95.8 %
Output Power:	350HP 259KW	Guaranteed Efficiency:	95.0
RPM:	1185	3/4 Load Efficiency:	96.1
Voltage:	575	KVA Code:	G
Hertz:	60	Max KVAR:	86.5
Amps - FL:	318.0	Power Factor:	86.0
Service Factor:	1.15	Bearing - DE:	6320ZC3
Alt Service Factor:	--	Bearing - ODE:	6315ZC3

Enclosure is Totally Enclosed Fan-Cooled

Stamped Nameplate Notes:

HTR LDS HE1-HE2 115V 350W
 INVERTER DUTY PER NEMA MG1 PART 31
 ALTERNATE RATING FOR PWM CONTROL:1.0SF 40C AMBIENT
 VAR TORQUE RANGE 0-60 HZ
 FOR DIRECT COUPLED LOAD ONLY

Additional Information:

6P - LL EXTN
 1260 CU IN - 2(4.00" NPT)
 C/B GRD PLATE
 115V HTR LDS TO AUX BOX OPP MAIN CONDUIT BOX
 SPACE HEATER CAUTION NAMEPLATE
 NEMA TYPE GRD PAD
 F1 MOUNTING
 PROVISION FOR BTD ON BOTH ENDS PLUGGED

Performance Characteristics

1st Winding 1st Connection

Design: 50BD3180B

Marks:

LOAD %	125.0	115.0	100.0	75.0	50.0	25.0	0.0
% EFF	95	95.29	95.86	96.08	96.07	94.57	0.00
% PF	86.75	86.71	86.23	83.71	76.57	56.02	3.21
AMPS	397.47	364.74	317.2	244.39	178.13	123.67	96.51

TORQ(FL)#FT 1550.21
AMPS(LR) 1902.79

TORQ(LR)%FL 124.72
PF AT START 0.25

TORQ(BD)%FL 260

This motor is capable of two cold or one hot start with a maximum connected load inertia of 16545 Lb-Ft Sq (696.54 Kg-meter Sq)at 100% voltage, where the load torque varies with the square of the speed. Acceleration time with maximum inertia and the above load type is 40 seconds. Safe stall time at 100% voltage is 82 seconds cold, 48 seconds hot. Rotor inertia is 236.72 Lb-Ft Sq (9.97 Kg-meter Sq).

Open Circuit A-C: 0.71

Short Circuit D-C: 0.038

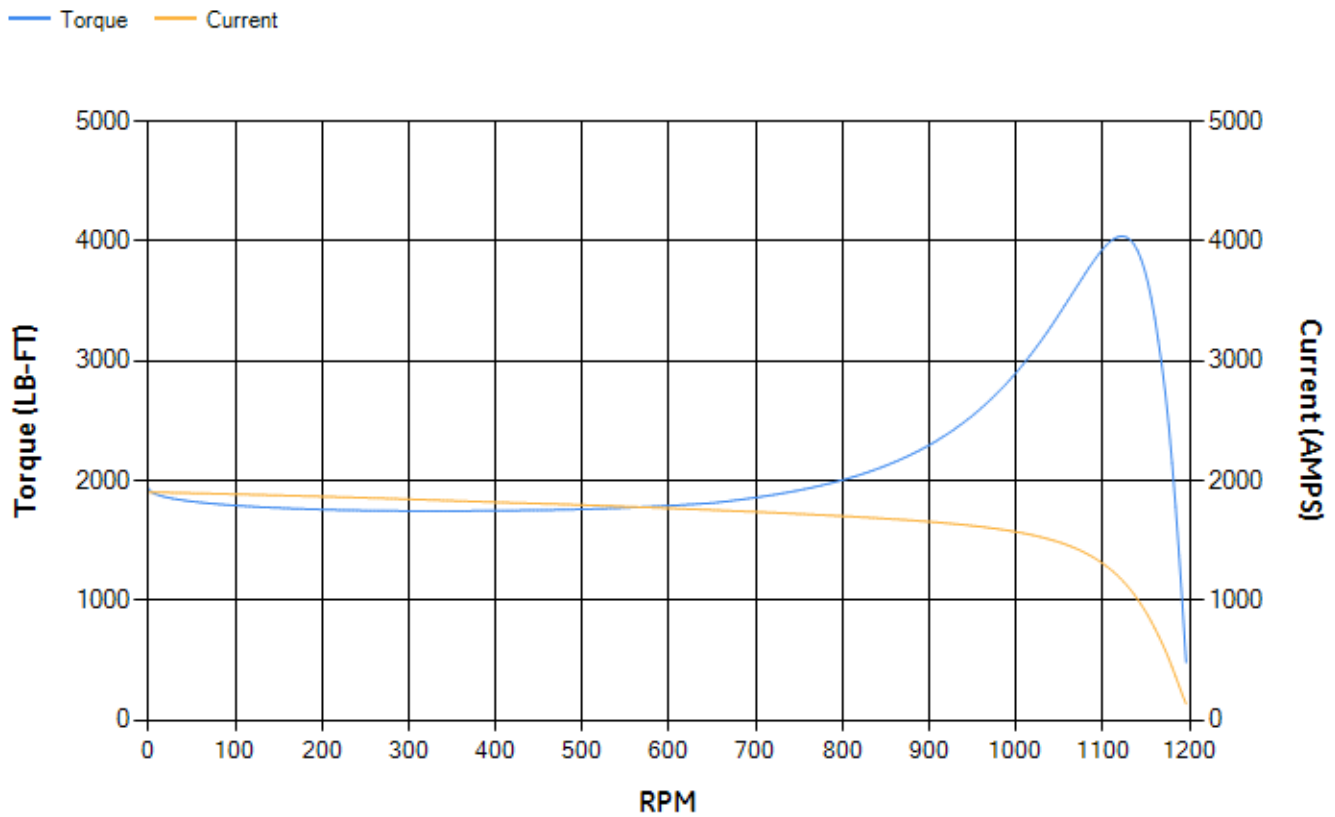
Short Circuit A-C: 0.034

X/R Ratio: 14.511

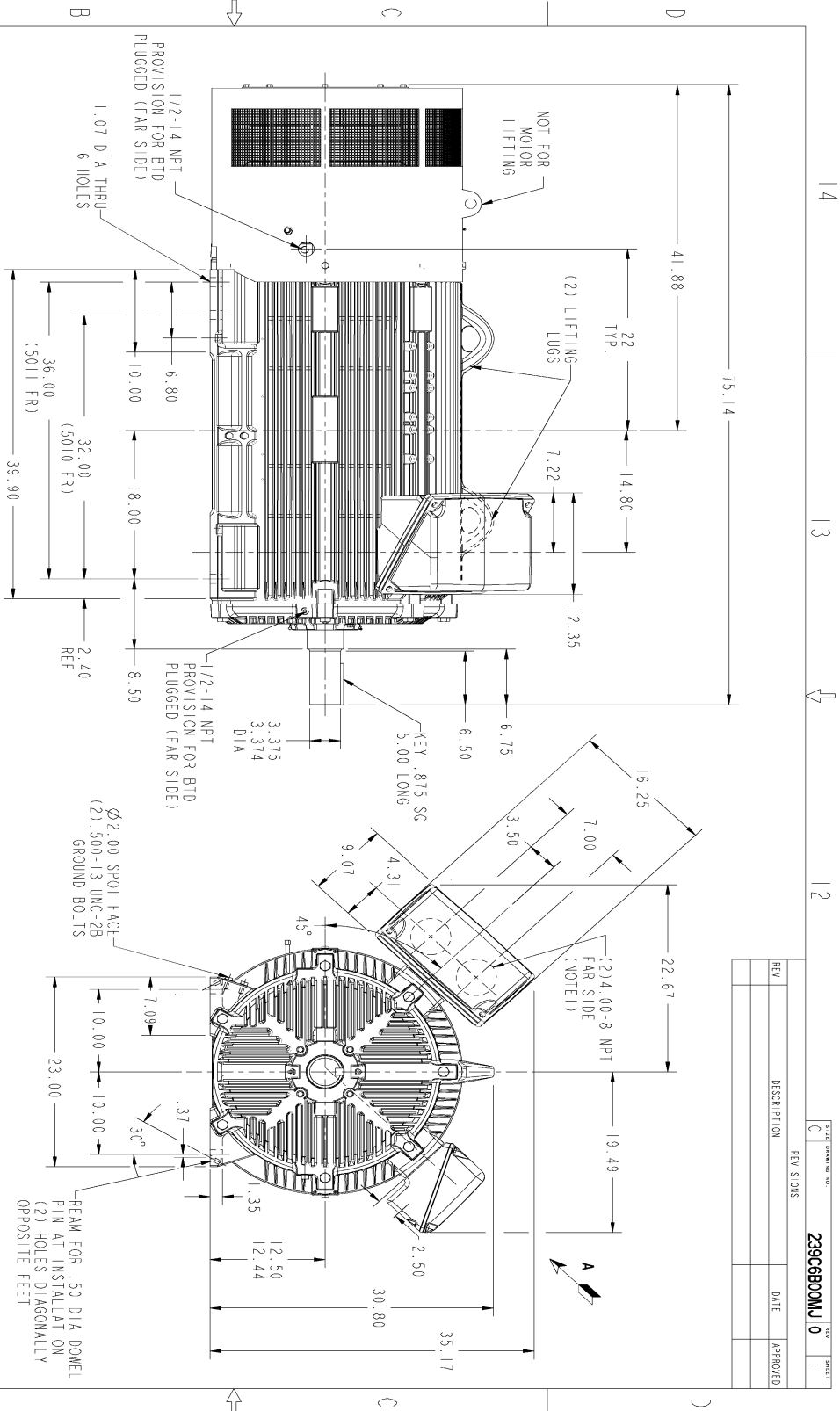
Stator Slots: 72

Rotor Slots: 58

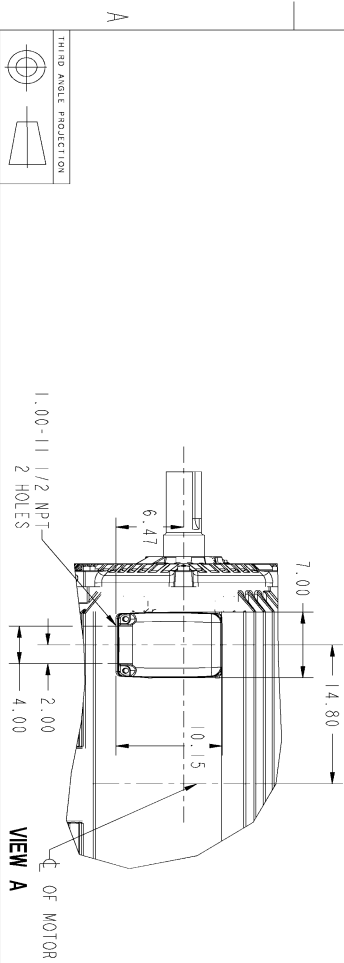
Speed Torque Current Curve (First Connection, First Speed)



Marks:



- NOTES:
1. CONDUIT BOX MAY BE PLACED WITH THE ENTRANCE DOWN, UP OR ON EITHER SIDE.
 2. F-1 ASSEMBLY AS SHOWN.
 3. ALL DIMENSIONS ARE IN INCHES.

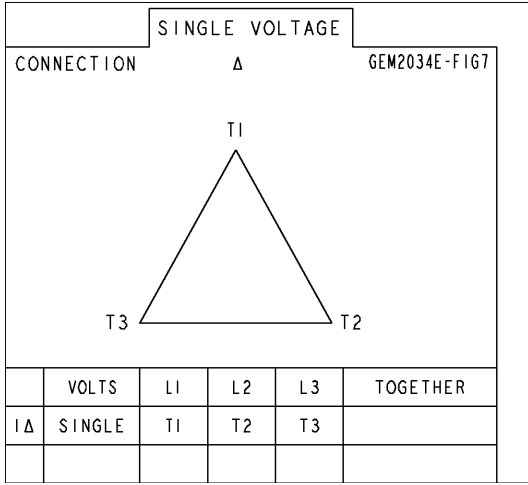


REV.	DESCRIPTION	DATE	APPROVED

MODEL	SIGNATURES	DATE	<p>GENERAL ELECTRIC COMPANY</p> <p>OUTLINE</p> <p>QUANTUM 5010/5011 LL</p> <p>1260 CU IN C/BOX, ACC. BOX, PROV. FOR BTDS/TC'S</p> <p>239C6B00MU</p> <p>SCALE: 0.125 REF. NO. 2396800UL SHEET 1 OF 1</p>
SCALE	HAEHRMAN	01/07/15	
DESIGNED	MARTIK	01/07/15	
CHKD	HAEHRMAN	01/07/15	
DATE	HAEHRMAN	01/07/15	

Marks:

Connection Diagram
GEM2034E-FIG7



Heater Connection
3027JE-1C

