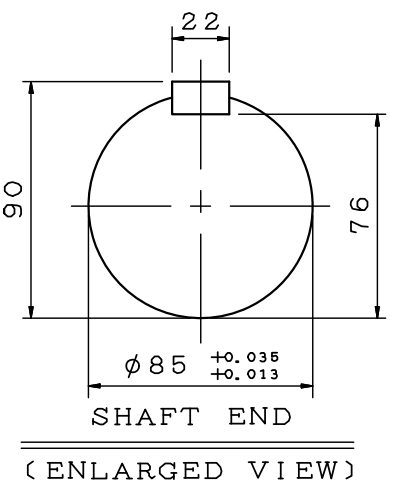
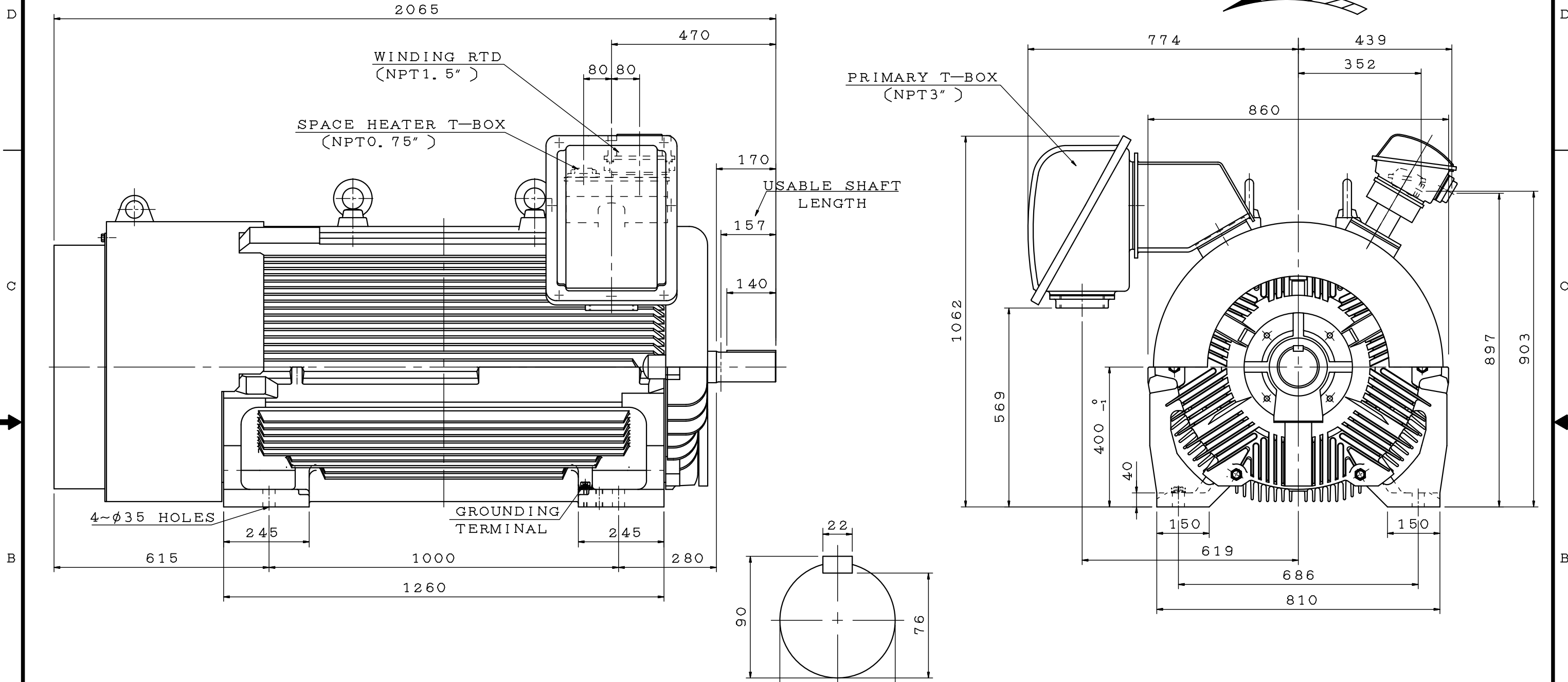


TYPE	OUTPUT		POLE	TIME RATING	VOLTAGE V	Hz	SYN. SPEED R. P. M
	HP.	kW.					
AEJH-TK	900		2	CONT.	2300/4160	60	3600

TOTALLY ENCLOSED FAN-COOLED TYPE, SQUIRREL-CAGE ROTOR



NOTE:

- DIMENSIONS IN MM
- FRAME NO. 400CA
- F CLASS INSULATION
- FOR DIRECT FLEXIBLE COUPLING
- ENCLOSURE: IP54
- BEARING SIZE: DRIVE-END 6318C3
OPP. DRIVE-END 6315C3
- WITH WINDING RTD: PT 100 Ω /0 $^{\circ}$ C 6PCS
- WITH SPACE HEATER: 1 ϕ 120V 250W
- APPROX. WEIGHT: 7780 LBS

DATE	OUTLINE DIMENSIONS	
	3-PHASE INDUCTION MOTOR	

DWN.	R. SHEN	FEB.22.2010
CHKD.	C. FU	FEB.23.2010
APPD.	B. YANG	FEB.24.2010

TECO Westinghouse

DWG NO.	REV:00
3B040Y306	