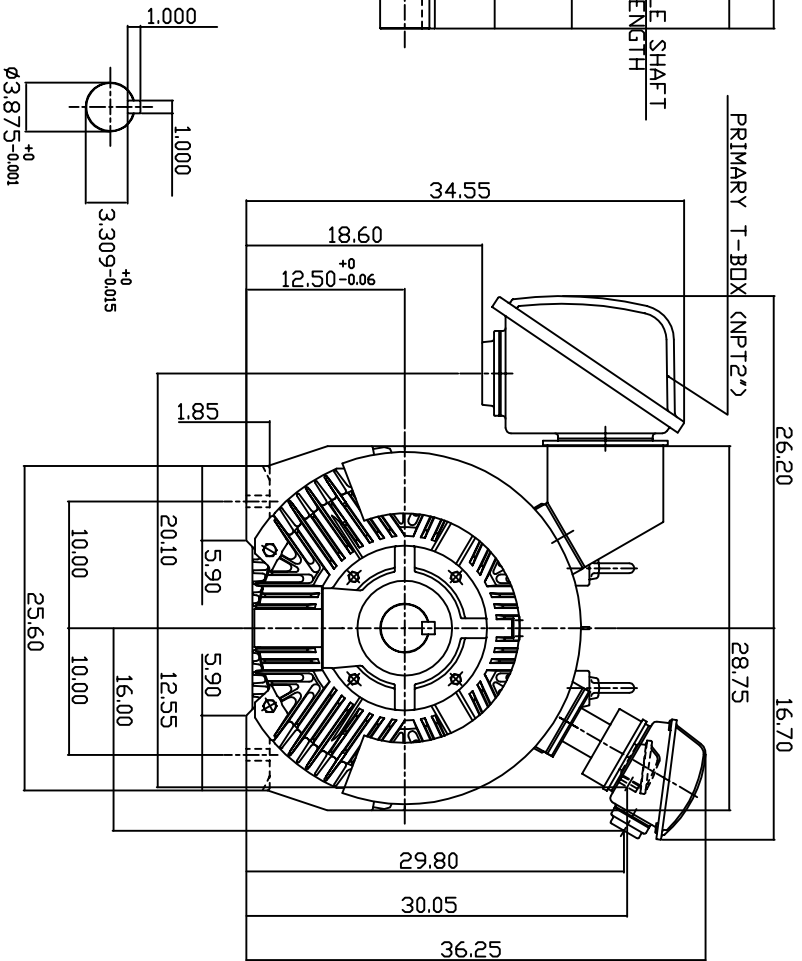
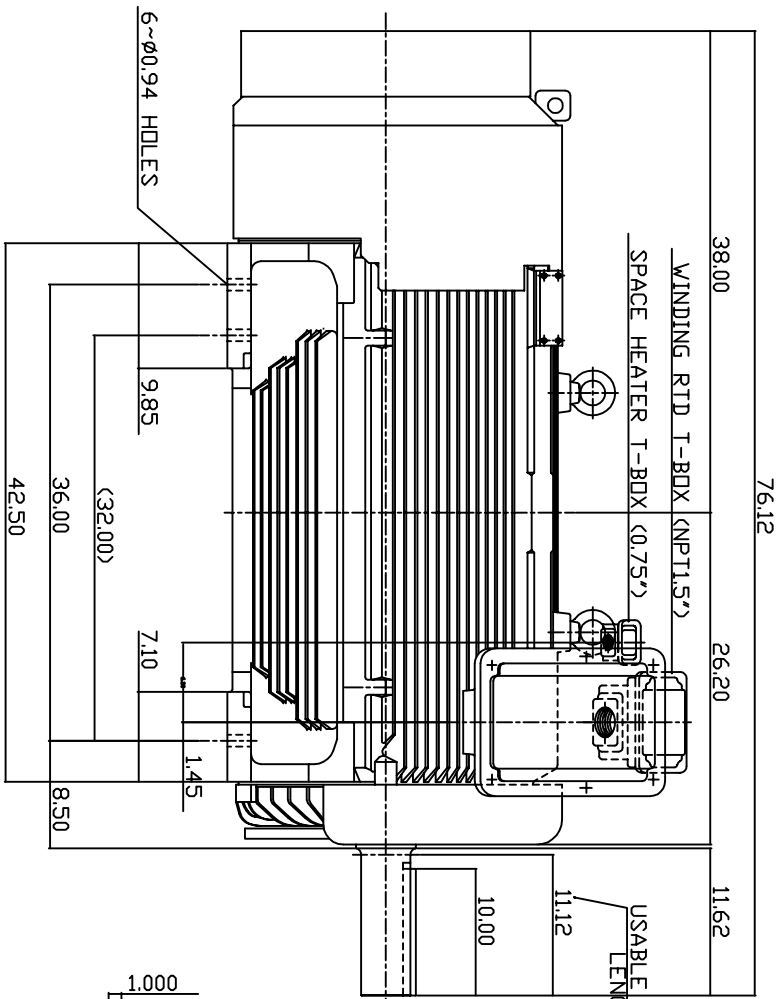


| TYPE | OUTPUT | | POLE | TIME RATING | VOLTAGE | Hz | SYN SPEED R.P.M |
|--------|--------|-----|------|-------------|-----------|----|-----------------|
| | HP. | KW. | | | | | |
| AEHGTK | 350 | 261 | 6 | CDNT. | 2300/4160 | 60 | 1200 |

TOTALLY ENCLOSED FAN-COOLED TYPE, SQUIRREL-CAGE ROTOR



NOTE:

1. DIMENSIONS IN INCH.
2. FRAME NO. 5011C (5010C)
3. F CLASS INSULATION, S.F.1.15
4. FOR BELT DRIVE APPLICATIONS
5. WITH SPACE HEATER 120 VOLT SINGLE PHASE 200 WATTS
6. WITH 100 OHM PLATINUM WINDING RTD'S 2/PHASE
7. BEARING SIZE: DRIVE END: NU324
NON-DRIVE END: 6320
8. MOTOR APPROX. WEIGHT: 4750 LBS

TW-56C

| DWN. | W.LLIN | APR-08-2003 |
|-------|--------|-------------|
| CHKD. | W.LLIN | APR-08-2003 |
| APPD. | C.WANG | APR-08-2003 |

| DATE | OUTLINE DIMENSIONS |
|---------------------|-------------------------|
| MAY 5, 2004 | 3-PHASE INDUCTION MOTOR |
| CATALOG NO. KG3506R | |



DWG NO. 3A040T4511 REV: 00