

# Product Information Packet

November 8, 2016

Data shown is for the current revision model #. Ensure your nameplate model # matches.

<b>Model Number:</b>	<b>5KS405XAA208D7</b>
<b>Catalog Number:</b>	<b>M9467</b>
<b>Instruction Manual:</b>	GEI-56128
<b>Connection Diagram:</b>	GEM2034E-FIG7
<b>Outline Drawing:</b>	239C6400PZ

## Accessory Connection Diagrams

<b>Bearing Thermocouple:</b>	None	<b>Heater:</b>	None
<b>RTD:</b>	None	<b>Thermistor:</b>	None
<b>Thermostat:</b>	None	<b>Winding Thermocouple:</b>	None
<b>Bearing RTD:</b>	None		

## Table of Contents

Specification	01
Performance Characteristics	02
Outline Drawing	03
Connection Drawing(s)	04
Spare parts	05



**Marks:**

<b>MODEL NUMBER:</b>	<b>5KS405XAA208D7</b>	<b>Estimated Weight:</b>	1440 Lbs
<b>Outline Drawing:</b>	239C6400PZ	<b>Time Rating:</b>	CONT
<b>Connection Diagram:</b>	GEM2034E-FIG7	<b>Enclosure:</b>	TEFC
<b>Instruction Book:</b>	GEI-56128	<b>Encl Construction:</b>	841
<b>Design Code:</b>	40BD1112A	<b>Ambient Max(°C):</b>	40
<b>Type:</b>	KS	<b>Alt Ambient Max(°C):</b>	--
<b>Frame:</b>	405T	<b>Insulation Class:</b>	H
<b>Phases:</b>	3	<b>NEMA Design:</b>	B
<b>Poles:</b>	4	<b>Nominal Efficiency:</b>	95.4 %
<b>Output Power:</b>	100HP 74KW	<b>Guaranteed Efficiency:</b>	95.0
<b>RPM:</b>	1785	<b>3/4 Load Efficiency:</b>	95.6
<b>Voltage:</b>	460	<b>KVA Code:</b>	G
<b>Hertz:</b>	60	<b>Max KVAR:</b>	36.3
<b>Amps - FL:</b>	122.0	<b>Power Factor:</b>	80.5
<b>Service Factor:</b>	1.15	<b>Bearing - DE:</b>	6316ZC3S0
<b>Alt Service Factor:</b>	--	<b>Bearing - ODE:</b>	6316ZC3S0

**Enclosure is Totally Enclosed Fan-Cooled**

**Stamped Nameplate Notes:**

IEEE-STD-841-2009  
 DE BRG 80BC03JP3026, ODE BRG 80BC03JP3026  
 STAMP NP249A5564P051 AS BELOW:  
 MODEL:5KS405XAA208D7 S/N: XXX  
 CSA CERTIFIED CSA09.2216219 FOR EX NA IIC 200 C GC  
 CL 1 ZONE2 AEX NA IIC 200C;CL 1 DIV2 GRP ABCD 200C  
 IN -25C <= AMB <= 40C, 1.0 SF ON SINE-WAVE PWR  
 SURF TEMP 215C AT 1.15SF ON SINE-WAVE PWR  
 OR 200 C VT OR 230 C CT OR 200 C CHP PWM CONTROL  
 ALTERNATE RATING FOR PWM CONTROL 1.0SF 40C AMB  
 VT 0-60 HZ, CT 6.7-60 HZ, CHP 60-90 HZ.

**Additional Information:**

4P - T EXTN  
 PAINTED FRAME ID & SHAFT,  
 FAN COVER INSIDE & ODE E/S OUTSIDE  
 700 CU IN - 3.00" NPT  
 INPRO SEAL BOTH ENDS  
 OIL RESISTANT SLEEVING ON LEADS  
 .0015" TIR SHAFT RUNOUT  
 ROUTINE TEST REPORT AND 5 POINT VIBRATION TEST  
 REPORT INCLUDED IN C/B  
 COPPER WASHER UNDER HEADS OF BEARING CAP BOLTS,  
 APPLY TITE-SEAL (A50CD427A) ON BEARING CAP SCREWS,  
 RABBETS AND PLUG THREADS.  
 GROUND PAD  
 F1 MOUNTING



**Performance Characteristics**

1st Winding 1st Connection

**Design: 40BD1112A**

Marks:

LOAD %	125.0	115.0	100.0	75.0	50.0	25.0	0.0
% EFF	95.03	95.23	95.67	95.61	95.17	92.64	0.00
% PF	82.3	81.83	80.54	76	65.78	43.45	3.15
AMPS	149.58	138.11	121.48	96.6	74.75	58.13	50.63

TORQ(FL)#FT 294.18  
 AMPS(LR) 601.12

TORQ(LR)%FL 139.57  
 PF AT START 0.28

TORQ(BD)%FL 230.2

This motor is capable of two cold or one hot start with a maximum connected load inertia of 2492 Lb-Ft Sq (104.91 Kg-meter Sq)at 100% voltage, where the load torque varies with the square of the speed. Acceleration time with maximum inertia and the above load type is 49 seconds. Safe stall time at 100% voltage is 105 seconds cold, 59 seconds hot. Rotor inertia is 21.75 Lb-Ft Sq (0.92 Kg-meter Sq).

Open Circuit A-C: 0.708

Short Circuit D-C: 0.034

Short Circuit A-C: 0.051

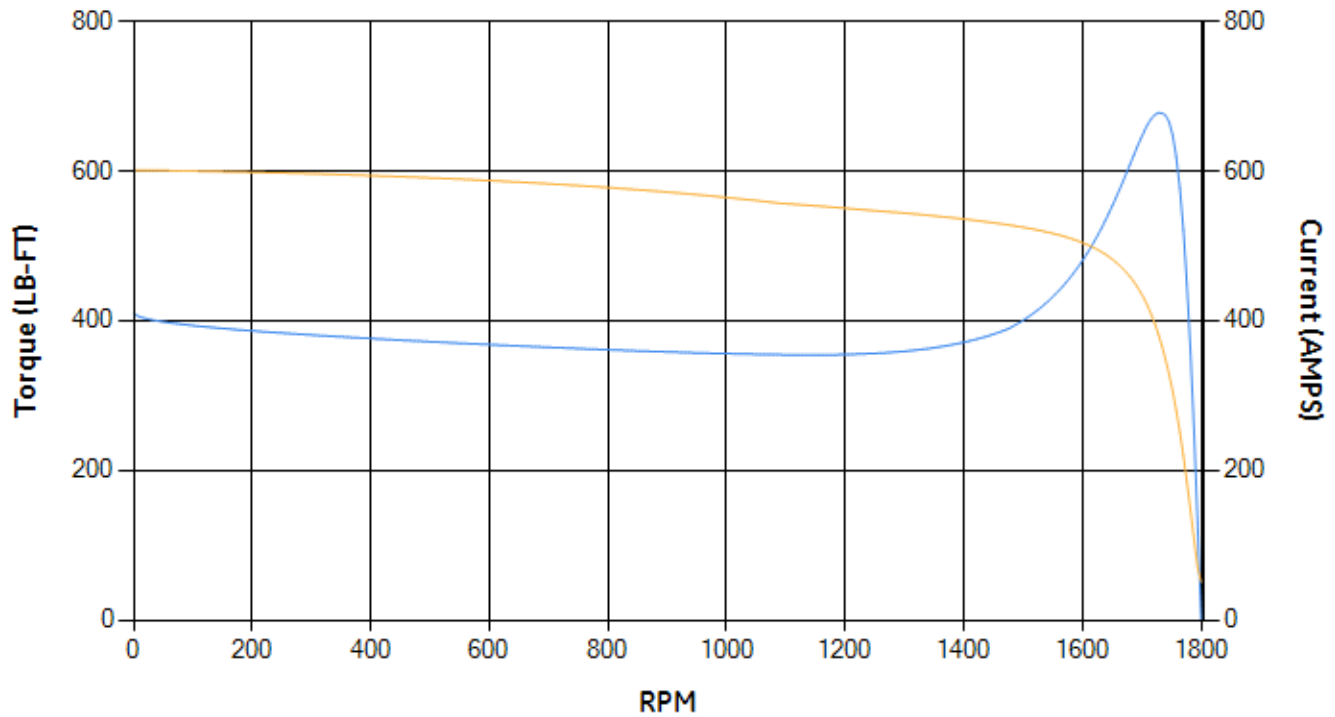
X/R Ratio: 12.873

Stator Slots: 72

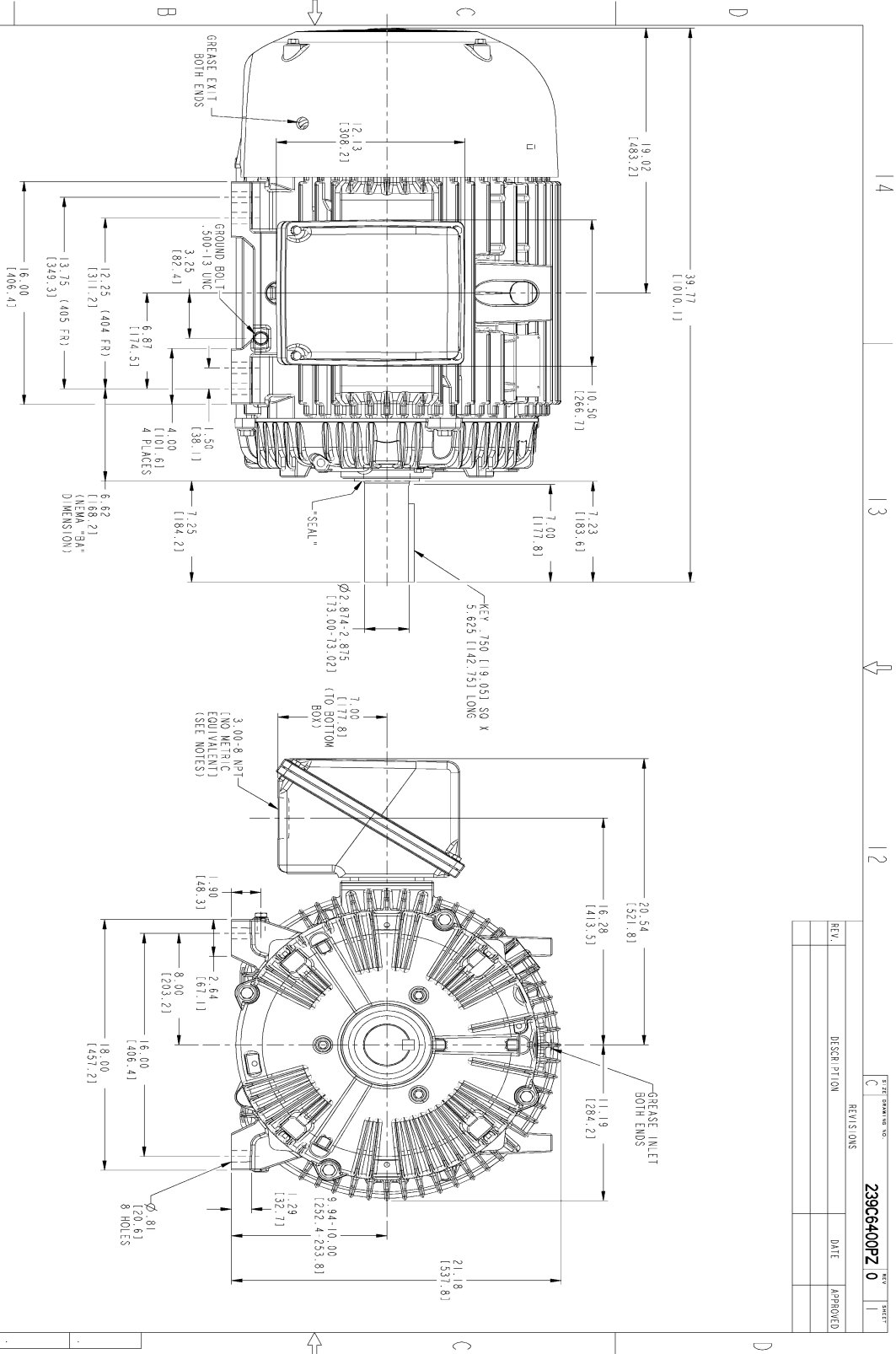
Rotor Slots: 58

**Speed Torque Current Curve (First Connection, First Speed)**

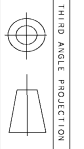
— Torque — Current



Marks:



- NOTES:
1. CONDUIT BOX MAY BE PLACED WITH THE ENTRANCE DOWN, UP OR ON EITHER SIDE.
  2. F-1 ASSEMBLY AS SHOWN.
  3. F-2 ASSEMBLY CONDUIT BOX ON OPPOSITE SIDE.
  4. BRACKETED DIMENSIONS ARE METRIC (MILLIMETERS).
  5. TOLERANCE ON PERMISSIBLE SHAFT EXTENSION RUNOUT IS .0015 T.I.R.



14 13 12 11

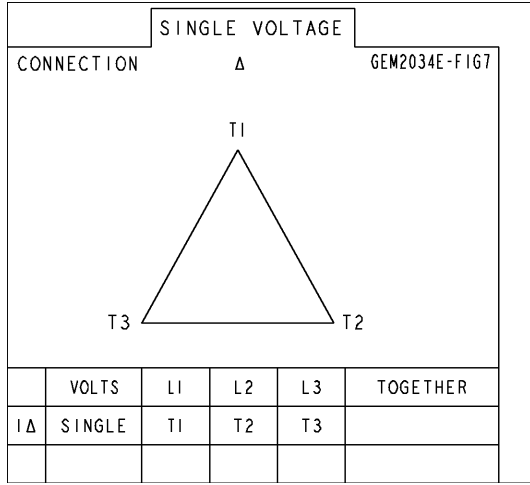
REV.	DESCRIPTION	DATE	APPROVED

MODEL	TEKAM	DATE	TEKAM	6/6/2015
SCALE	TEKAM	DATE	TEKAM	6/6/2015
ORDER	KARLIK	DATE	YEMKI	6/6/2015
DESIGN	YEMKI	DATE	TEKAM	6/6/2015
W/E				
DRAWN				
CHECKED				
APPROVED				
TITLE	GENERAL ELECTRIC COMPANY			
	OUTLINE			
	404/405 T TFC XSD 841			
	700 CU. IN. CONDUIT BOX			
	239C6400PZ 0			
	REV 0			
	SHEET 1 OF 1			

DISTRIBUTION: MMP

Marks:

**Connection Diagram**  
**GEM2034E-FIG7**



End shield Assembly		
Part Description	DE Side Part#	ODE Side Part#
End Shield	115E4304AA1	115E4304LL1
Bearing	235A2618AA04	235A2618AA04
Slinger/Inproseal	235A4575GS4	235A4575GS4

Fan & Fan Cover Assembly	
Part Description	Part#
Fan	159C7100AA2
Fan Cover	128D6832AA1

Conduit & Accessories Box Assembly	
Part Description	Part#
Conduit Box	118D4408AD2

Mechanical Accessories	
Part Description	Part#
Brake	
Tachometer	