

# Product Information Packet

January 13, 2017

Data shown is for the current revision model #. Ensure your nameplate model # matches.

<b>Model Number:</b>	<b>5KS256SAE129A</b>
<b>Catalog Number:</b>	<b>V965</b>
<b>Instruction Manual:</b>	GEK-95655
<b>Connection Diagram:</b>	GEM2034E-FIG9
<b>Outline Drawing:</b>	4002B5825PLP5210

Accessory Connection Diagrams			
<b>Bearing Thermocouple:</b>	None	<b>Heater:</b>	3027JE-1
<b>RTD:</b>	None	<b>Thermistor:</b>	None
<b>Thermostat:</b>	None	<b>Winding Thermocouple:</b>	None
<b>Bearing RTD:</b>	None		

Table of Contents	
Specification	01
Performance Characteristics	02
Outline Drawing	03
Connection Drawing(s)	04



**Marks:**

<b>MODEL NUMBER:</b>	<b>5KS256SAE129A</b>	<b>Estimated Weight:</b>	350 Lbs
<b>Outline Drawing:</b>	4002B5825PLP5210	<b>Time Rating:</b>	CONT
<b>Connection Diagram:</b>	GEM2034E-FIG9	<b>Enclosure:</b>	TEFC
<b>Instruction Book:</b>	GEK-95655	<b>Encl Construction:</b>	SD
<b>Design Code:</b>	25BD0065A	<b>Ambient Max(°C):</b>	40
<b>Type:</b>	KS	<b>Alt Ambient Max(°C):</b>	--
<b>Frame:</b>	L256HP10	<b>Insulation Class:</b>	H
<b>Phases:</b>	3	<b>NEMA Design:</b>	B
<b>Poles:</b>	2	<b>Nominal Efficiency:</b>	91 %
<b>Output Power:</b>	20HP 14.8KW	<b>Guaranteed Efficiency:</b>	89.5
<b>RPM:</b>	3540	<b>3/4 Load Efficiency:</b>	92.6
<b>Voltage:</b>	230/460	<b>KVA Code:</b>	G
<b>Hertz:</b>	60	<b>Max KVAR:</b>	2.3
<b>Amps - FL:</b>	45.2/22.6	<b>Power Factor:</b>	91.0
<b>Service Factor:</b>	1.15	<b>Bearing - DE:</b>	6309ZC3
<b>Alt Service Factor:</b>	--	<b>Bearing - ODE:</b>	6309-2ZC3

**Enclosure is Totally Enclosed Fan-Cooled**

---

**Stamped Nameplate Notes:**

PREMIUM EFFICIENT MOTOR  
HTR LDS H 115V 60W  
SEVERE DUTY  
INVERTER DUTY PER NEMA MG1 PART 31  
ALTERNATE RATING FOR PWM CONTROL:  
1.0 SF VAR TORQUE RANGE 0-60 HZ  
IP 55  
SUITABLE FOR 190/380V 50 HZ WITH  
56/28 AMPS AND 2900 RPM AT 1.0 S.F

**Additional Information:**

2P - HP EXTN  
C/BOX 137 CU IN-1.25 NPT  
AUX LEADS EXIT WITH MOTOR LEADS  
RCF 5000 CPM, STATIC DEFLECTION .0014 INCHES &  
CENTER OF GRAVITY 10.75 INCHES  
SOLID SHAFT NORMAL THRUST  
OIL RESISTANT SLEEVING ON LEADS  
BEARING LIFE 8760 HOURS AT 685 LB THRUST



**Performance Characteristics**

1st Winding 1st Connection

**Design: 25BD0065A**

**Marks:**

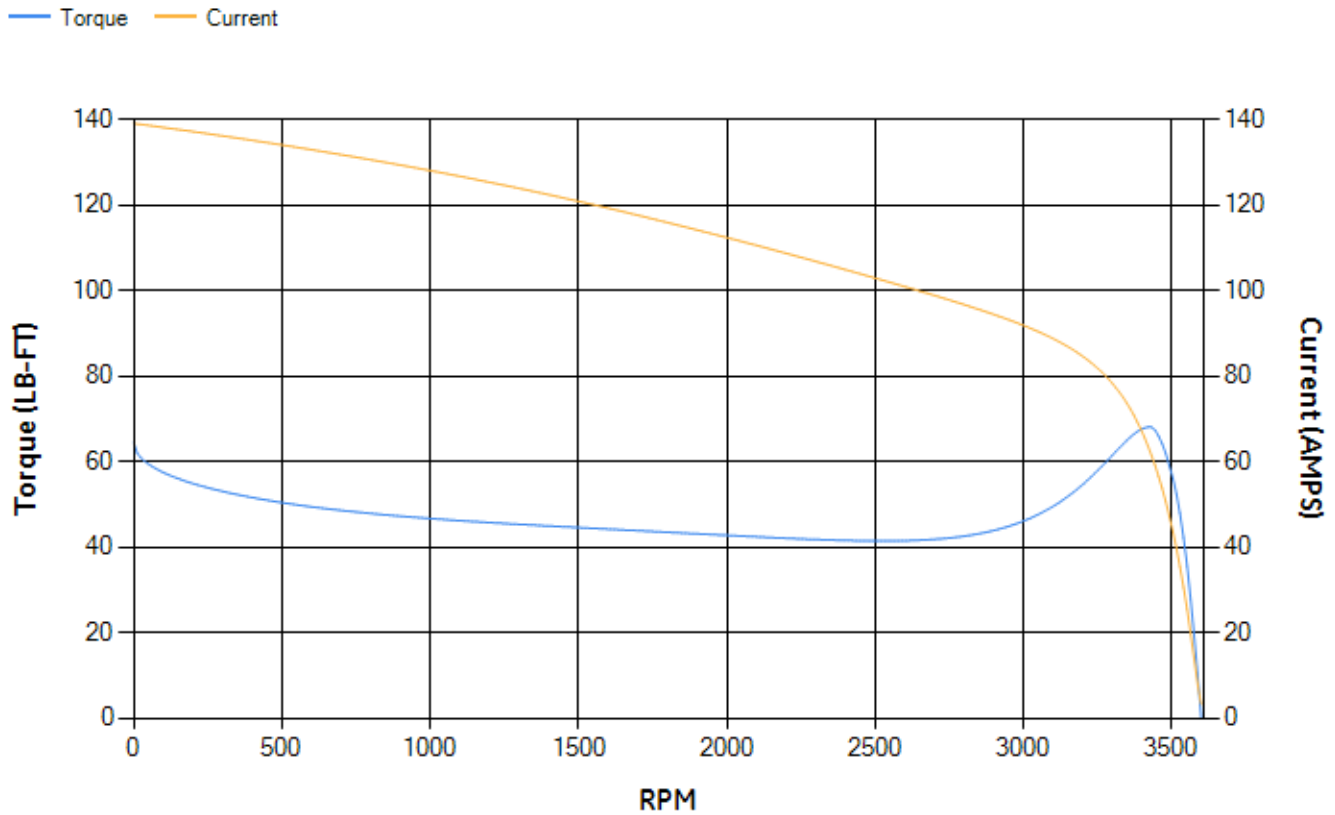
LOAD %	125.0	115.0	100.0	75.0	50.0	25.0	0.0
% EFF	89.27	90.16	91.45	92.55	93.01	91.04	0.00
% PF	88.89	89.91	91.01	91.73	90.36	81.34	11.6
AMPS	29.49	26.56	22.49	16.54	11.14	6.32	3.17

TORQ(FL)#FT	29.65	TORQ(LR)%FL	217.28	TORQ(BD)%FL	228.31
AMPS(LR)	139.04	PF AT START	0.33		

This motor is capable of two cold or one hot start with a maximum connected load inertia of 143 Lb-Ft Sq (6.02 Kg-meter Sq)at 100% voltage, where the load torque varies with the square of the speed. Acceleration time with maximum inertia and the above load type is 44 seconds. Safe stall time at 100% voltage is 94 seconds cold, 55 seconds hot. Rotor inertia is 1.9 Lb-Ft Sq (0.08 Kg-meter Sq).

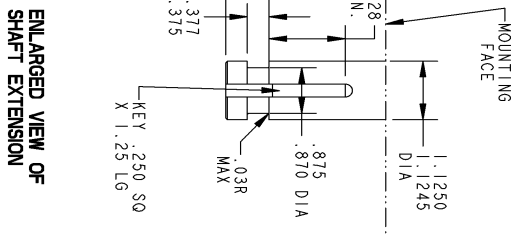
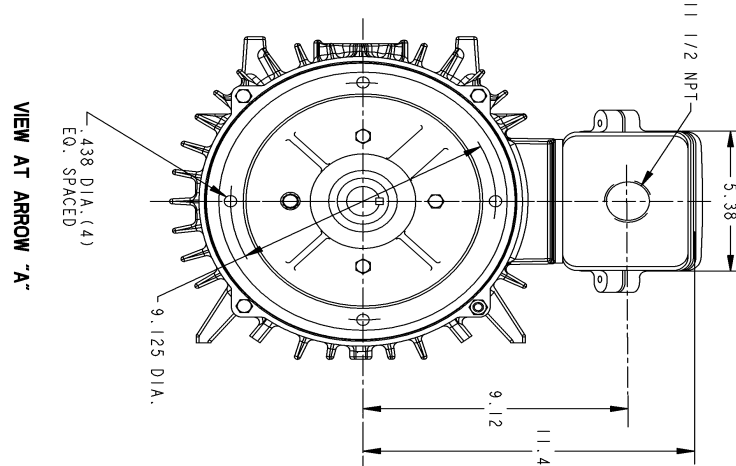
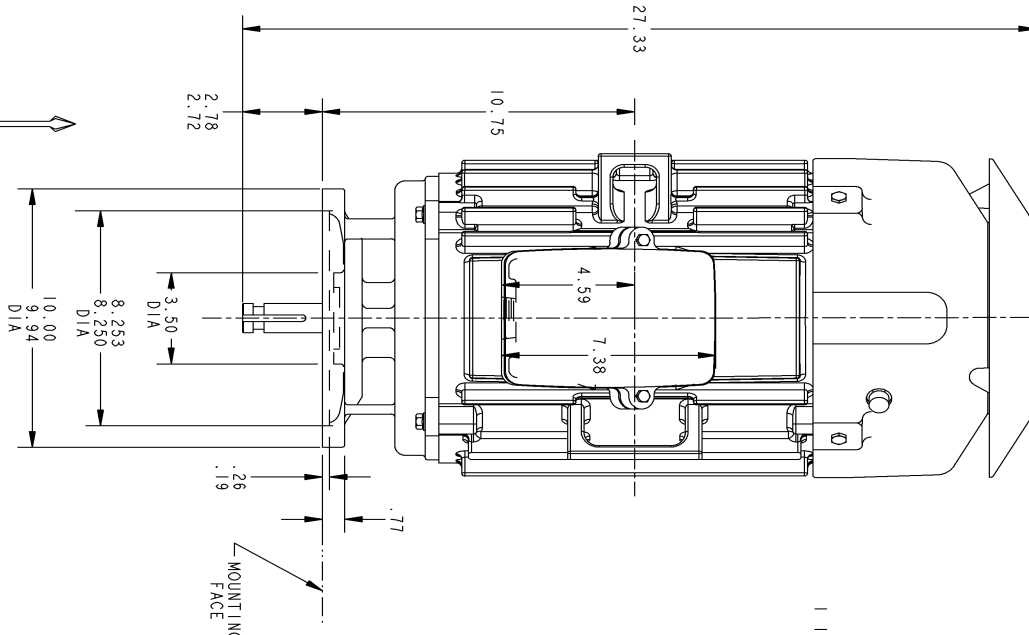
Open Circuit A-C:	1.254	Short Circuit D-C:	0.013
Short Circuit A-C:	0.028	X/R Ratio:	4.893
Stator Slots:	36	Rotor Slots:	26

**Speed Torque Current Curve (First Connection, First Speed)**



NAME:320002276 OBJECT:4002B5825PLP5210 DATE:13-Feb-09 16:29:27

Marks:



NOTE 1: CONDUIT BOX MAY BE ASSEMBLED WITH ENTRANCE UP, DOWN OR TO EITHER SIDE

VIEW AT ARROW "A"

CAD NO.	4002B5825PLP5210			TITLE	
REF.	4002B5825PLP210			INDUCTION MOTOR OUTLINE	
PLT CLASS		FIRST MADE FOR		FR. K-L254HP10 CIR STANDARD VERTICAL 5KS2560PL6DA9A	
PLT SCALE	.25	T.E.F.C. SOLID SHAFT - NORMAL THRUST		(OPL)	
		PETERBOROUGH		4002B5825PLP5210	
		MOTOR PLANT		CONT. ON SHT. -	
				SHT. NO. 1	

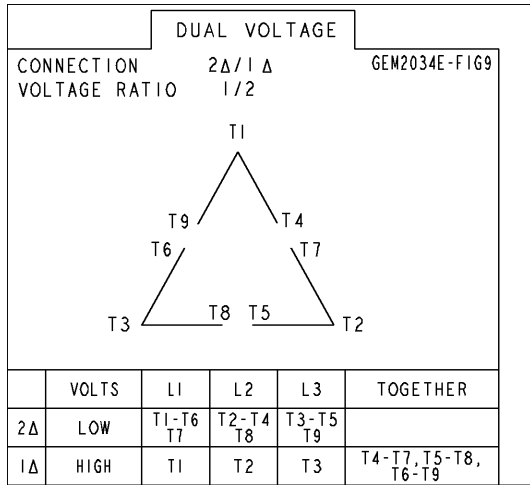
REV	DESCRIPTION	DATE	INT'L	NAME	DATE
2	ISAC NO: # 09-0130 ATUL	02/12/09		DRAMAN P. RAJU	06/23/03
1	EXTRA DIMENSION REMOVED	06/24/03		CHEKED BHARATHI	06/23/03

CAD DRAWING - NO MANUAL REVISIONS PERMITTED

PRINTS TO	
18K15	

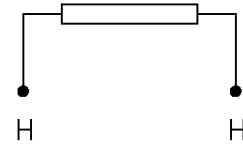
Marks:

**Connection Diagram**  
GEM2034E-FIG9



**Heater Connection**  
3027JE-1

FIG. 1  
HEATER CONN.



CONTROL	L1	L2
VOLTAGE ONLY	H	H