

Product Information Packet

November 8, 2016

Data shown is for the current revision model #. Ensure your nameplate model # matches.

Model Number:	5KS449SAA385B
Catalog Number:	M9396
Instruction Manual:	GEI-56128
Connection Diagram:	GEM2034E-FIG8
Outline Drawing:	239C6800AA

Accessory Connection Diagrams			
Bearing Thermocouple:	None	Heater:	None
RTD:	None	Thermistor:	None
Thermostat:	None	Winding Thermocouple:	None
Bearing RTD:	None		

Table of Contents

Specification	01
Performance Characteristics	02
Outline Drawing	03
Connection Drawing(s)	04
Spare parts	05



Marks:

MODEL NUMBER:	5KS449SAA385B	Estimated Weight:	3150 Lbs
Outline Drawing:	239C6800AA	Time Rating:	CONT
Connection Diagram:	GEM2034E-FIG8	Enclosure:	TEFC
Instruction Book:	GEI-56128	Encl Construction:	X\$D
Design Code:	49BD3024B	Ambient Max(°C):	40
Type:	KS	Alt Ambient Max(°C):	50
Frame:	449T	Insulation Class:	H
Phases:	3	NEMA Design:	B
Poles:	6	Nominal Efficiency:	95.8 %
Output Power:	250HP 185KW	Guaranteed Efficiency:	95.4
RPM:	1190	3/4 Load Efficiency:	96.1
Voltage:	575	KVA Code:	G
Hertz:	60	Max KVAR:	77.0
Amps - FL:	234.0	Power Factor:	83.5
Service Factor:	1.15	Bearing - DE:	6318ZC3
Alt Service Factor:	1.00	Bearing - ODE:	6318ZC3

Enclosure is Totally Enclosed Fan-Cooled

Stamped Nameplate Notes:

FOR DIRECT COUPLED LOAD ONLY
 STAMP NP249A5564P051 AS BELOW:
 MODEL:5KS449SAA385B S/N: XXX
 CSA CERTIFIED CSA09.2216219 FOR EX NA IIC 200 C GC
 CL 1 ZONE2 AEX NA IIC 200C;CL 1 DIV2 GRP ABCD 200C
 IN -40C <= AMB <= 40C, 1.0 SF ON SINE-WAVE PWR
 SURF TEMP 260C AT 1.15SF ON SINE-WAVE PWR
 OR 215C VT OR ---C CT OR 215C CHP PWM CONTROL
 ALTERNATE RATING FOR PWM CONTROL 1.0SF 40C AMB
 VT 0 - 60 HZ, CT -- HZ, CHP 60-90 HZ.

Additional Information:

6P - T EXTN - SPLIT LEAD
 700 CU IN - 3.00" NPT
 OIL RESISTANT SLEEVING ON LEADS
 F1 MOUNTING

Performance Characteristics

1st Winding 1st Connection

Design: 49BD3024B

Marks:

LOAD %	125.0	115.0	100.0	75.0	50.0	25.0	0.0
% EFF	95.16	95.41	95.94	96.08	95.98	94.3	0.00
% PF	84.56	84.26	83.29	79.57	70.5	48.34	2.7
AMPS	290.78	267.77	234.27	183.63	138.31	102.65	85.9

TORQ(FL)#FT 1101.16
AMPS(LR) 1401.19

TORQ(LR)%FL 129.6
PF AT START 0.23

TORQ(BD)%FL 275.4

This motor is capable of two cold or one hot start with a maximum connected load inertia of 13235 Lb-Ft Sq (557.19 Kg-meter Sq)at 100% voltage, where the load torque varies with the square of the speed. Acceleration time with maximum inertia and the above load type is 58 seconds. Safe stall time at 100% voltage is 145 seconds cold, 70 seconds hot. Rotor inertia is 206.69 Lb-Ft Sq (8.7 Kg-meter Sq).

Open Circuit A-C: 1.047

Short Circuit D-C: 0.032

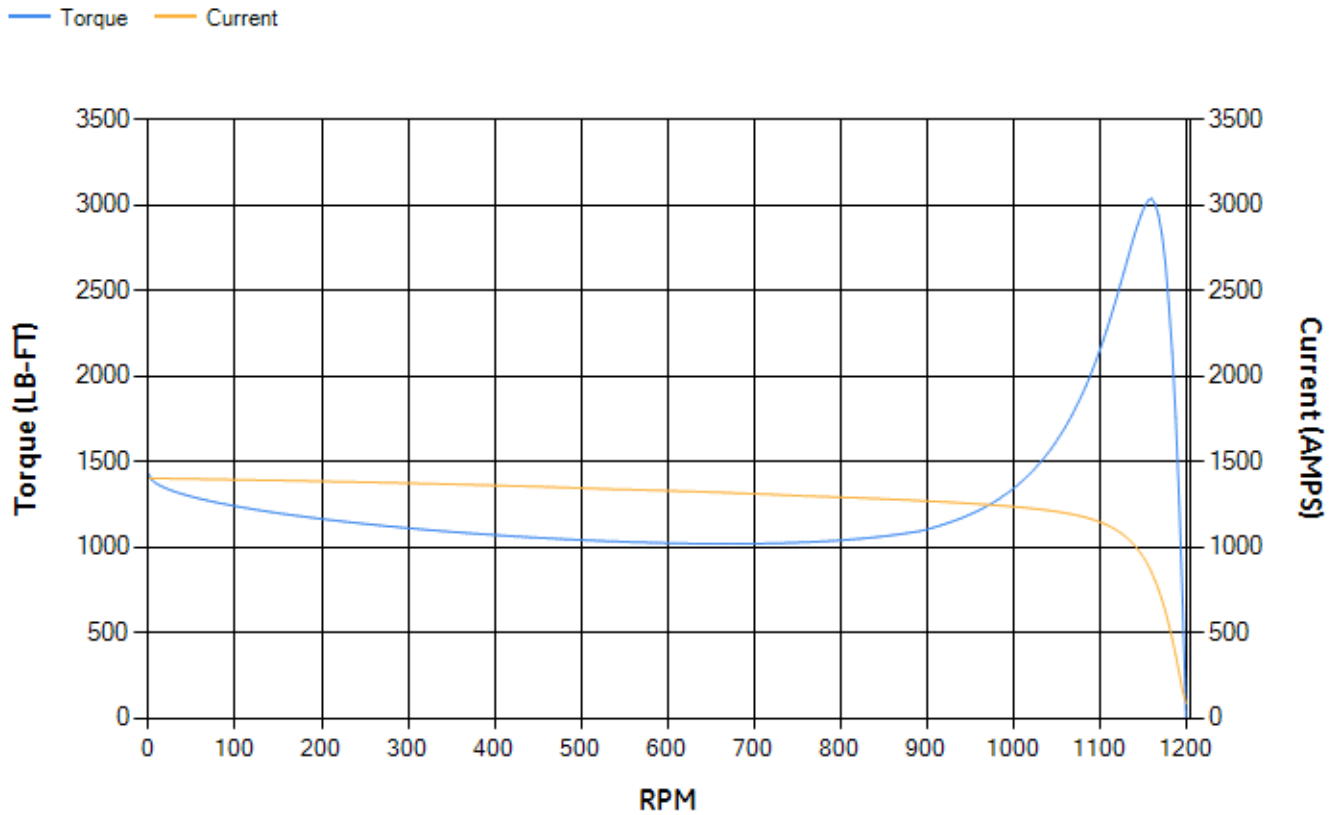
Short Circuit A-C: 0.059

X/R Ratio: 12.07

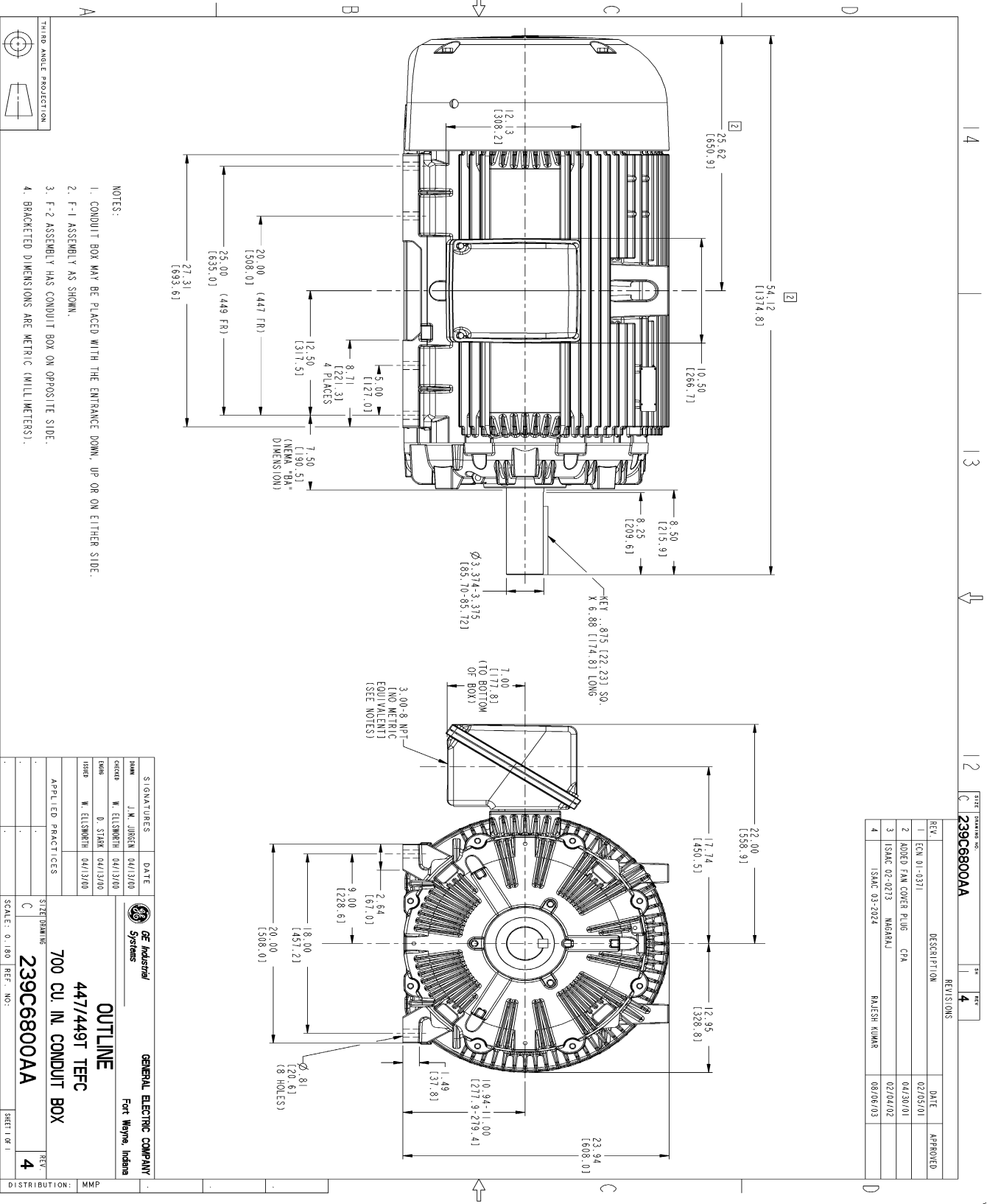
Stator Slots: 72

Rotor Slots: 58

Speed Torque Current Curve (First Connection, First Speed)

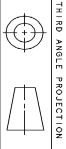


Marks:



NOTES:

1. CONDUIT BOX MAY BE PLACED WITH THE ENTRANCE DOWN, UP OR ON EITHER SIDE.
2. F-1 ASSEMBLY AS SHOWN.
3. F-2 ASSEMBLY HAS CONDUIT BOX ON OPPOSITE SIDE.
4. BRACKETED DIMENSIONS ARE METRIC (MILLIMETERS).



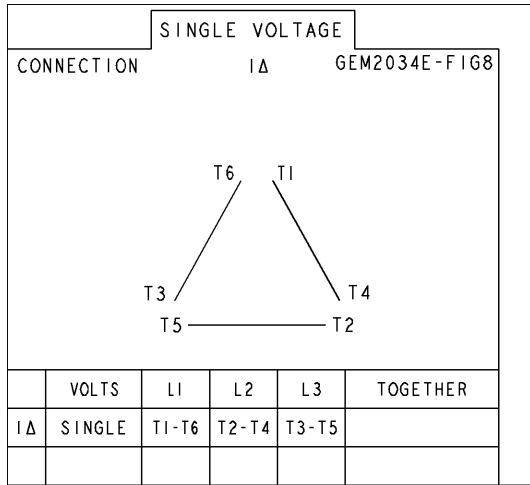
REV.	DESCRIPTION	DATE	APPROVED
1	ECN 01-0371	02/05/01	
2	RODED FAN COVER PLUG CFA	04/30/01	
3	ISSAC 02-0213 MARGRAJ	02/04/02	
4	ISSAC 03-2024 RAJESH KUMAR	08/06/03	

SIGNATURES	DATE
DAVE J.M. JOHNSON 04/13/00	
CHUCK W. ELLSWORTH 04/13/00	
DAVE D. STARR 04/13/00	
ISSAC W. ELLSWORTH 04/13/00	

GENERAL ELECTRIC COMPANY Fort Wayne, Indiana	
OUTLINE 447/449T TEFC 700 CU. IN. CONDUIT BOX	
SCALE: 0.180	REF. NO:
SIZE DRAWING: 239C6800AA	
SHEET OF 1: 4	
DISTRIBUTION: MMP	

Marks:

Connection Diagram
GEM2034E-FIG8



End shield Assembly		
Part Description	DE Side Part#	ODE Side Part#
End Shield	115E4355AA1	115E4355LM1
Bearing	235A2514AG01	235A2514AG01
Slinger/Inproseal	149C4399G07	149C4399G07

Fan & Fan Cover Assembly	
Part Description	Part#
Fan	159C7100G03
Fan Cover	128D6841AA1

Conduit & Accessories Box Assembly	
Part Description	Part#
Conduit Box	118D4408AD2

Mechanical Accessories	
Part Description	Part#
Brake	
Tachometer	