

# Product Information Packet

November 9, 2016

Data shown is for the current revision model #. Ensure your nameplate model # matches.

<b>Model Number:</b>	<b>5KS447SAA118D13</b>
<b>Catalog Number:</b>	<b>M9961</b>
<b>Instruction Manual:</b>	GEI-56128
<b>Connection Diagram:</b>	GEM2034E-FIG20
<b>Outline Drawing:</b>	239C6800AB

Accessory Connection Diagrams			
<b>Bearing Thermocouple:</b>	None	<b>Heater:</b>	None
<b>RTD:</b>	None	<b>Thermistor:</b>	None
<b>Thermostat:</b>	None	<b>Winding Thermocouple:</b>	None
<b>Bearing RTD:</b>	None		

## Table of Contents

Specification	01
Performance Characteristics	02
Outline Drawing	03
Connection Drawing(s)	04
Spare parts	05



**Marks:**

<b>MODEL NUMBER:</b>	<b>5KS447SAA118D13</b>	<b>Estimated Weight:</b>	2840 Lbs
<b>Outline Drawing:</b>	239C6800AB	<b>Time Rating:</b>	CONT
<b>Connection Diagram:</b>	GEM2034E-FIG20	<b>Enclosure:</b>	TEFC
<b>Instruction Book:</b>	GEI-56128	<b>Encl Construction:</b>	X\$D
<b>Design Code:</b>	49BD0110A	<b>Ambient Max(°C):</b>	40
<b>Type:</b>	KS	<b>Alt Ambient Max(°C):</b>	55
<b>Frame:</b>	447TS	<b>Insulation Class:</b>	H
<b>Phases:</b>	3	<b>NEMA Design:</b>	B
<b>Poles:</b>	2	<b>Nominal Efficiency:</b>	95.4 %
<b>Output Power:</b>	200HP 148KW	<b>Guaranteed Efficiency:</b>	95.0
<b>RPM:</b>	3580	<b>3/4 Load Efficiency:</b>	95.7
<b>Voltage:</b>	460	<b>KVA Code:</b>	G
<b>Hertz:</b>	60	<b>Max KVAR:</b>	30.1
<b>Amps - FL:</b>	212.0	<b>Power Factor:</b>	92.5
<b>Service Factor:</b>	1.15	<b>Bearing - DE:</b>	6314ZC3
<b>Alt Service Factor:</b>	1.00	<b>Bearing - ODE:</b>	6314ZC3

**Enclosure is Totally Enclosed Fan-Cooled**

---

**Stamped Nameplate Notes:**

STAMP NP249A5564P051 AS BELOW:  
 MODEL:5KS447SAA118D13 S/N: XXX  
 CSA CERTIFIED CSA09.2216219 FOR EX NA IIC 200 C GC  
 CL 1 ZONE2 AEX NA IIC 200C;CL 1 DIV2 GRP ABCD 200C  
 IN -40C <= AMB <= 40C, 1.0 SF ON SINE-WAVE PWR  
 SURF TEMP 260C AT 1.15SF ON SINE-WAVE PWR  
 OR 215 C VT OR 230 C CT OR --- C CHP PWM CONTROL  
 ALTERNATE RATING FOR PWM CONTROL 1.0SF 40C AMB  
 VT 0-60 HZ, CT 30-60 HZ, CHP --- HZ.

**Additional Information:**

2P - TS EXTN - SPLIT LEAD  
 700 CU IN - 3.00" NPT  
 OIL RESISTANT SLEEVING ON LEADS  
 F1 MOUNTING

**Performance Characteristics**

1st Winding 1st Connection

**Design: 49BD0110A**

**Marks:**

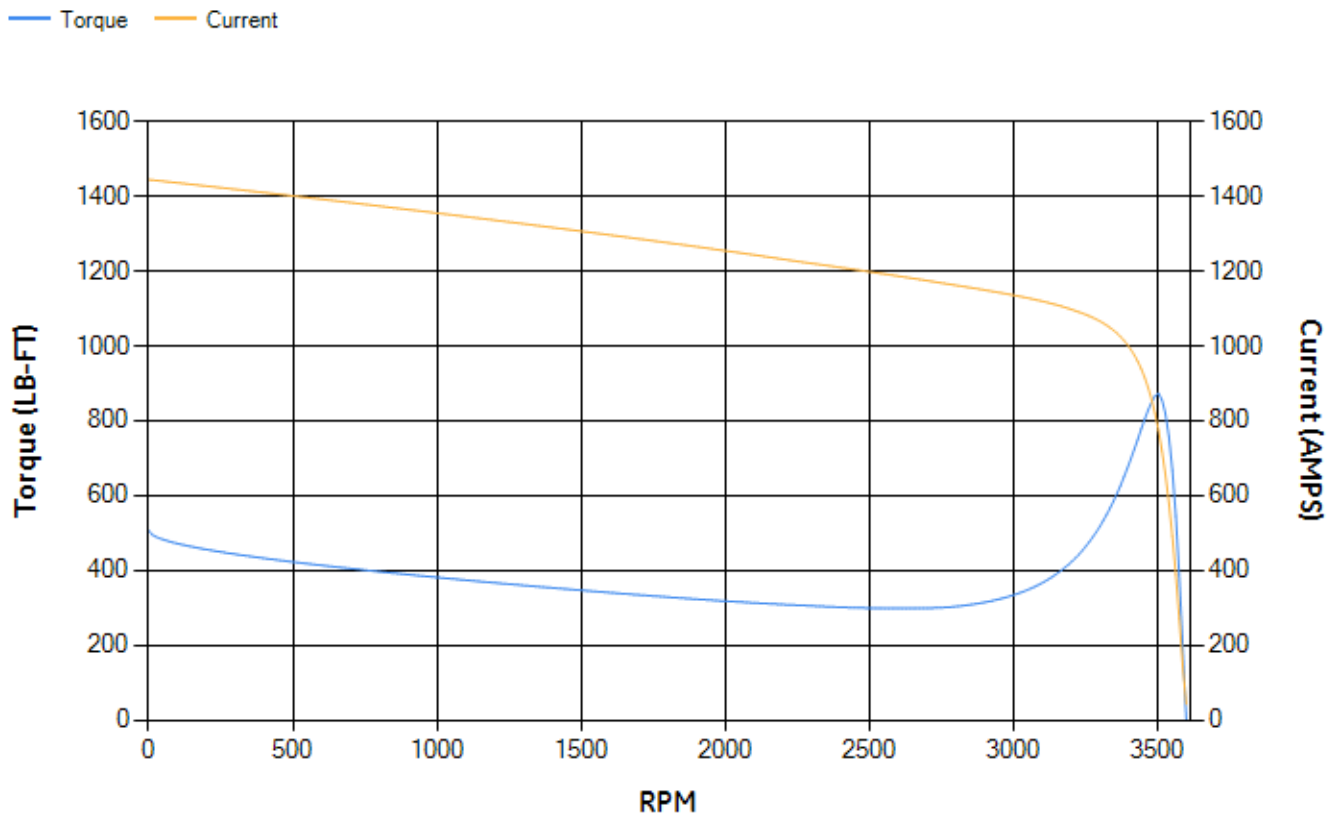
LOAD %	125.0	115.0	100.0	75.0	50.0	25.0	0.0
% EFF	95.17	95.36	95.79	95.74	95.35	92.96	0.00
% PF	92.1	92.29	92.35	91.53	88.12	74.35	7.4
AMPS	266.95	244.6	211.63	160.2	111.4	67.71	41.92

<b>TORQ(FL)#FT</b>	293.34	<b>TORQ(LR)%FL</b>	172.66	<b>TORQ(BD)%FL</b>	297.42
<b>AMPS(LR)</b>	1444.18	<b>PF AT START</b>	0.25		

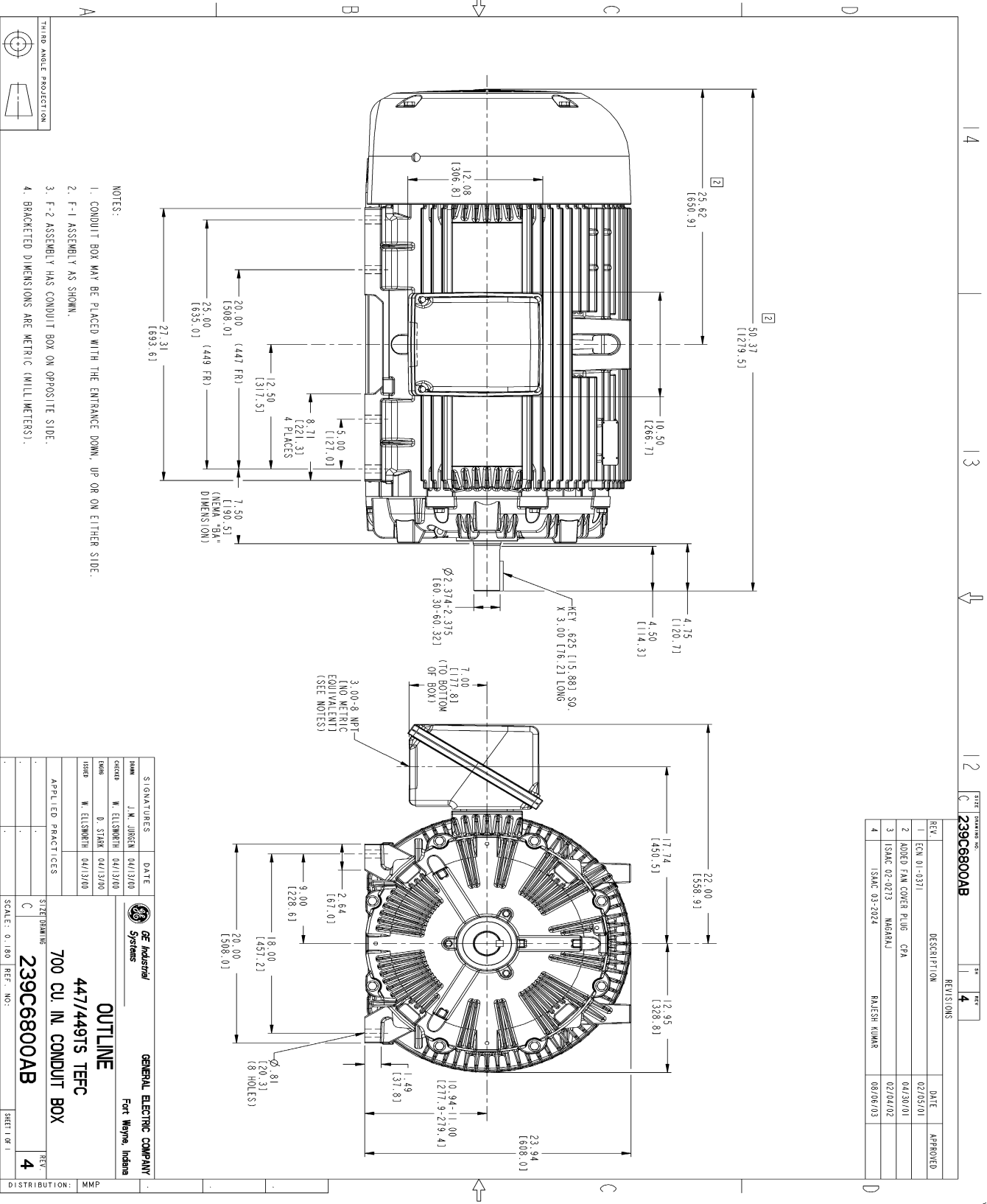
This motor is capable of two cold or one hot start with a maximum connected load inertia of 760 Lb-Ft Sq (32 Kg-meter Sq) at 100% voltage, where the load torque varies with the square of the speed. Acceleration time with maximum inertia and the above load type is 33 seconds. Safe stall time at 100% voltage is 74 seconds cold, 39 seconds hot. Rotor inertia is 51.69 Lb-Ft Sq (2.18 Kg-meter Sq).

<b>Open Circuit A-C:</b>	2.393	<b>Short Circuit D-C:</b>	0.032
<b>Short Circuit A-C:</b>	0.071	<b>X/R Ratio:</b>	12.114
<b>Stator Slots:</b>	48	<b>Rotor Slots:</b>	38

**Speed Torque Current Curve (First Connection, First Speed)**



Marks:



- NOTES:
1. CONDUIT BOX MAY BE PLACED WITH THE ENTRANCE DOWN, UP OR ON EITHER SIDE.
  2. F-1 ASSEMBLY AS SHOWN.
  3. F-2 ASSEMBLY HAS CONDUIT BOX ON OPPOSITE SIDE.
  4. BRACKETED DIMENSIONS ARE METRIC (MILLIMETERS).

SIGNATURES	DATE	GENERAL ELECTRIC COMPANY Fort Wayne, Indiana
DESIGNER: J.M. JUREN	04/13/00	<b>OUTLINE</b> <b>447/449TS TFFC</b> <b>700 CU. IN. CONDUIT BOX</b>
CHECKED: W. ELLSWORTH	04/13/00	
DRAWN: D. STARR	04/13/00	
ISSUED: W. ELLSWORTH	04/13/00	
APPLIED PRACTICES		
SCALE: 0.180	REF. NO.:	
SHEET DRAWING: 239C6800AB		
SHEET NO. 4		
DISTRIBUTION: MMP		

REV.	DESCRIPTION	DATE	APPROVED
1	ECN 01-0371	02/05/01	
2	MODIFIED FAN COVER PLUG - CPA	04/30/01	
3	ISSAC 02-0213 - MARGRAJ	02/04/02	
4	ISSAC 03-2024 - RAJESH KUMAR	08/06/03	

SIZE DRAWING NO. 239C6800AB  
 REVISIONS 4

Marks:

**Connection Diagram**  
**GEM2034E-FIG20**



End shield Assembly		
Part Description	DE Side Part#	ODE Side Part#
End Shield	115E4354AA1	115E4354LL1
Bearing	235A2616AA01	235A2616AA01
Slinger/Inproseal	149C4399G05	149C4399G05

Fan & Fan Cover Assembly	
Part Description	Part#
Fan	159C7100AA1
Fan Cover	128D6841AA1

Conduit & Accessories Box Assembly	
Part Description	Part#
Conduit Box	118D4408AD2

Mechanical Accessories	
Part Description	Part#
Brake	
Tachometer	