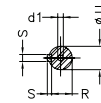
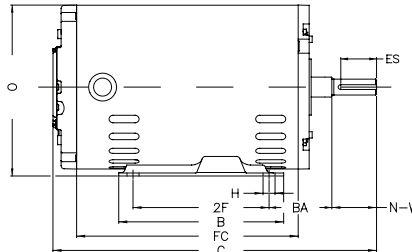
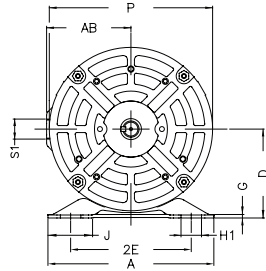


W01 Rolled Steel 56 Frame Three Phase Motors

ODP - Electrical Data



NEMA Frame	2E	2F	A	AB	B	BA	D	HK	Hole H	J	LM	P	T	Shaft end						Bearings	
														d1	ES	N-W	R	S	U	D.E.	N.D.E.
56	4.874	3.000	6.535	3.323	4.016	2.750	3.500	0.118	0.343	1.734	NPT 1/2"	6.723	6.456	A 3.15	1.417	1.874	0.517	0.187	0.625	6203ZZ	6202ZZ
56H		3.000/5.000			6.496					1.593										6204ZZ	

Standard Efficiency

NEMA Frame	Output		Poles	C	FC
	HP	kW			
56	0.25	0.18	2	10.315	6.299
			4	9.921	5.906
			6	10.315	6.299
	0.33	0.25	2	10.315	6.299
			4	9.921	5.906
			6	10.315	6.299
0.5	0.37	2	10.709	6.693	
		4	11.496	7.480	
0.75	0.55	2	11.102	7.087	
		4	11.890	7.874	
56H			6	12.283	8.268
56	1	0.75	2	10.709	6.693
			4	11.496	7.480
56H			6	11.890	7.874
56	1.5	1.1	2	11.102	7.087
			4	11.890	7.874
	2	1.5	2	11.496	7.480
			4	12.283	8.268
56H			2	12.283	8.268
56H	3	2.2	2	12.283	8.268
			4	12.283	8.268

Premium Efficiency (DOE)

NEMA Frame	Output		Poles	C	FC
	HP	kW			
56	0.25	0.18	2	10.315	6.299
			4	9.921	5.906
			6	10.315	6.299
	0.33	0.25	2	10.315	6.299
			4	9.921	5.906
			6	10.315	6.299
0.5	0.37	2	10.709	6.693	
		4	11.496	7.480	
0.75	0.55	2	11.102	7.087	
		4	11.890	7.874	
56H			6	12.283	8.268
56	1	0.75	2	10.709	6.693
			4	11.496	7.480
56H			6	11.890	7.874
56	1.5	1.1	2	11.102	7.087
			4	11.890	7.874
	2	1.5	2	11.496	7.480
			4	12.283	8.268
56H			2	12.283	8.268
56H	3	2.2	2	12.283	8.268
			4	12.283	8.268

Frame	BA	"C" Flange Dimensions					
		Flange					
		AJ	AK	BB	BD	BF	AH
56C	2.750	5.874	4.500	0.157	6.028	UNC 3/8"x16	2.062
56HC							

