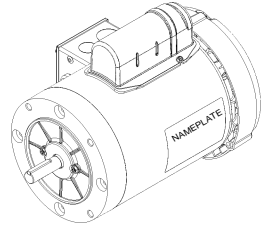
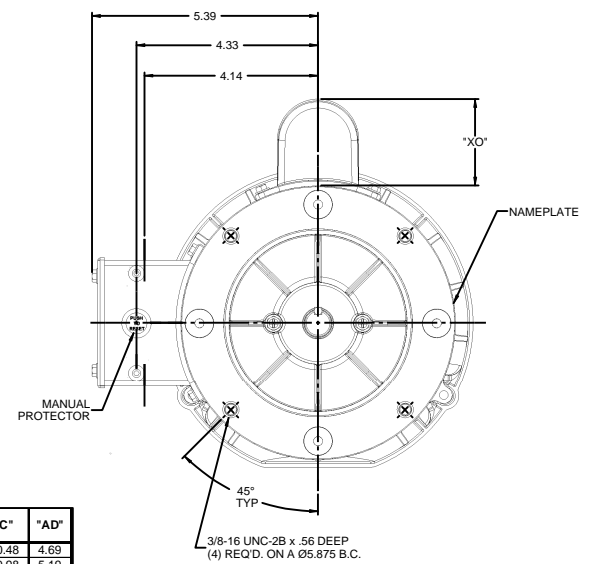
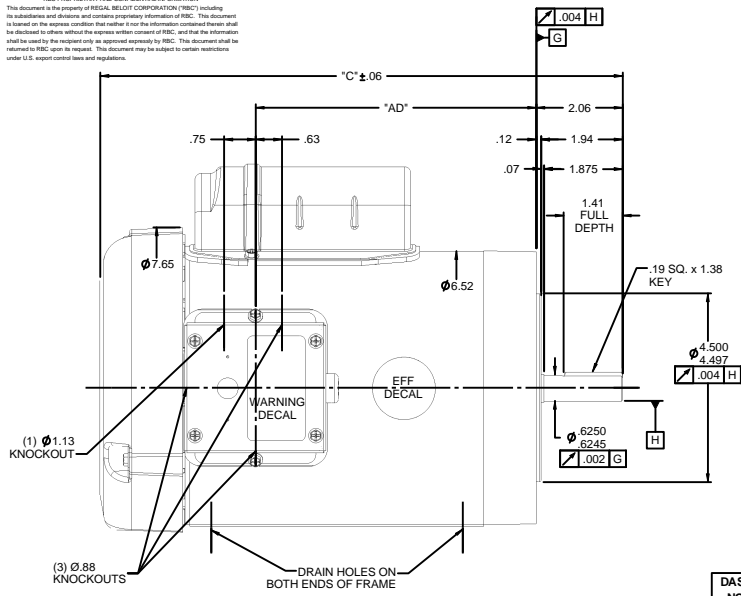


RBC PROPRIETARY AND CONFIDENTIAL INFORMATION
 This document is the property of REGAL BELOIT CORPORATION ("RBC") including its subsidiaries and divisions and contains proprietary information of RBC. This document is based on the express condition that neither it nor the information contained therein shall be disclosed to others without the express written consent of RBC, and that the information shall be used by the recipient only as approved expressly by RBC. This document shall be returned to RBC upon its request. This document may be subject to certain restrictions under U.S. export control laws and regulations.



DASH NO.	"C"	"AD"
500	10.48	4.69
550	10.98	5.19
600	11.48	5.69
650	11.98	6.19
700	12.48	6.69
750	12.98	7.19
800	13.48	7.69
850	13.98	8.19

CAP DASH	"XO"
A	1.61
B	2.08
C	2.32

NOTES:
 1) GASKETS THROUGHOUT

		TOLERANCES UNLESS SPECIFIED		LEESON ELECTRIC MOTORS GEARMOTORS AND DRIVES		DRAWN: SAD 10/21/09
		DEC.	INCHES			CHK: SK 10/21/09
		X	.1			APPR:
		XX	.03		TITLE OUTLINE - 56C FRAME	SCALE: 1:2
		XXX	.005		TEFC - "C" FACE	REF: 028875 & 028866
		XXXX	.0005		MATL:	FME
NO	REVISION	BY & DATE	CHK	ANG	FINISH	PAGE
						OF
	THIRD ANGLE PROJECTION		REP: 10/21/09		RELEV	DRAWING NO
			NETWORK FILE NAME			REV
					SIZE: B	028980