

Product Information Packet

November 11, 2016

Data shown is for the current revision model #. Ensure your nameplate model # matches.

Model Number:	5KS365LAA305D
Catalog Number:	M7955
Instruction Manual:	GEI-56128
Connection Diagram:	GEM2034E-FIG3
Outline Drawing:	239CC200AA

Accessory Connection Diagrams			
Bearing Thermocouple:	None	Heater:	None
RTD:	None	Thermistor:	None
Thermostat:	None	Winding Thermocouple:	None
Bearing RTD:	None		

Table of Contents	
Specification	01
Performance Characteristics	02
Outline Drawing	03
Connection Drawing(s)	04

Marks:

MODEL NUMBER:	5KS365LAA305D	Estimated Weight:	1000 Lbs
Outline Drawing:	239CC200AA	Time Rating:	CONT
Connection Diagram:	GEM2034E-FIG3	Enclosure:	TEFC
Instruction Book:	GEI-56128	Encl Construction:	SD
Design Code:	36BD3071A	Ambient Max(°C):	40
Type:	KS	Alt Ambient Max(°C):	--
Frame:	365T	Insulation Class:	F
Phases:	3	NEMA Design:	A
Poles:	6	Nominal Efficiency:	94.1 %
Output Power:	50HP 37KW	Guaranteed Efficiency:	93.0
RPM:	1185	3/4 Load Efficiency:	94.2
Voltage:	230/460	KVA Code:	G
Hertz:	60	Max KVAR:	22.3
Amps - FL:	126.8/63.4	Power Factor:	78.5
Service Factor:	1.15	Bearing - DE:	6314ZC3
Alt Service Factor:	--	Bearing - ODE:	6314ZC3

Enclosure is Totally Enclosed Fan-Cooled

Stamped Nameplate Notes:

INVERTER DUTY PER NEMA MG1 PART 31
 ALTERNATE RATING FOR PWM CONTROL:1.0SF 40C AMBIENT
 VAR TORQUE RANGE 0-60 HZ

Additional Information:

6P - T EXTN
 346 CU IN - 3.00" NPT
 OIL RESISTANT SLEEVING ON LEADS
 F1 MOUNTING
 VIBRATION LIMIT 0.15 INCH PER SEC

Performance Characteristics

1st Winding 1st Connection

Design: 36BD3071A

Marks:

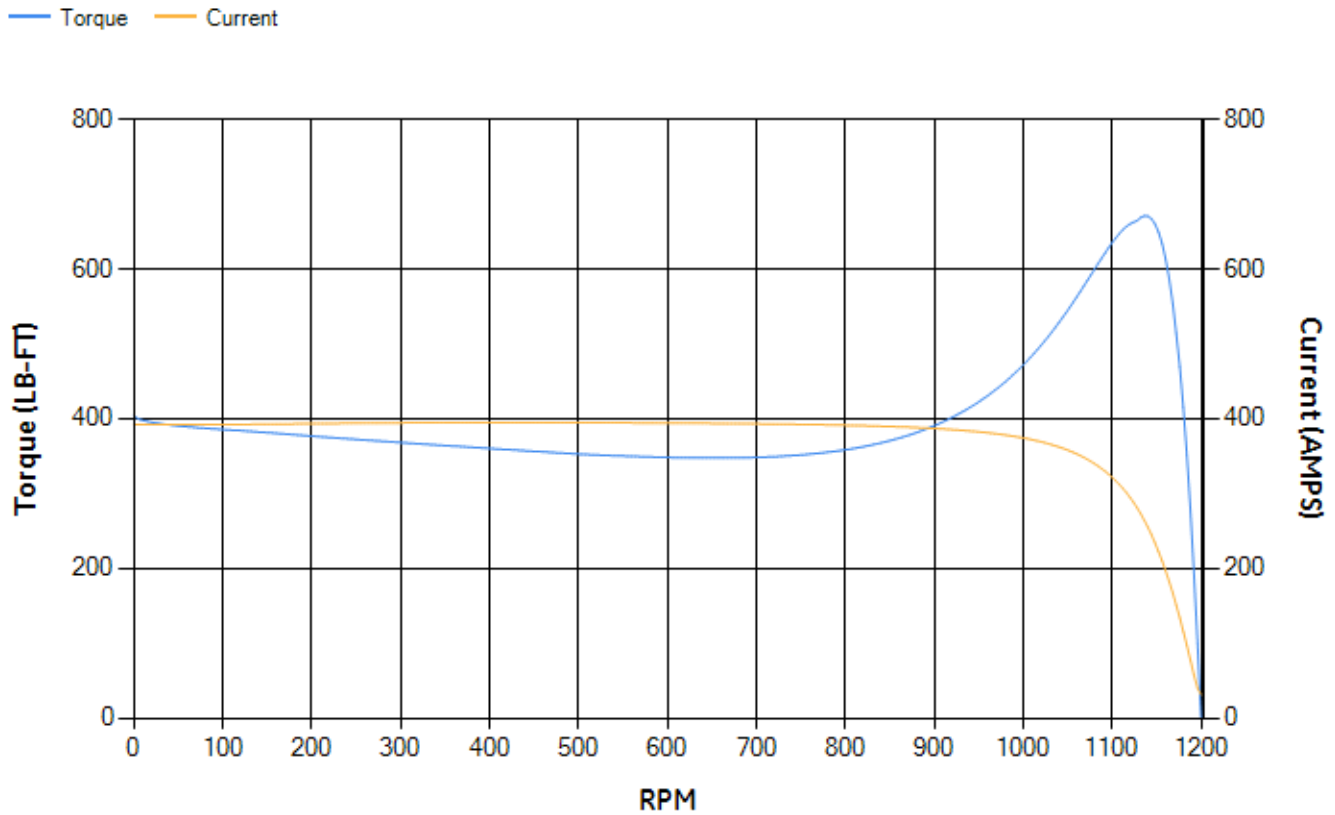
LOAD %	125.0	115.0	100.0	75.0	50.0	25.0	0.0
% EFF	93.47	93.72	94.22	94.24	93.73	90.59	0.00
% PF	82.16	81.06	78.76	72.31	60.09	37.66	3.14
AMPS	76.17	70.84	62.92	51.5	41.55	34.29	30.94

TORQ(FL)#FT	221.16	TORQ(LR)%FL	183.06	TORQ(BD)%FL	299.28
AMPS(LR)	391.95	PF AT START	0.38		

This motor is capable of two cold or one hot start with a maximum connected load inertia of 3081 Lb-Ft Sq (129.71 Kg-meter Sq)at 100% voltage, where the load torque varies with the square of the speed. Acceleration time with maximum inertia and the above load type is 37 seconds. Safe stall time at 100% voltage is 91 seconds cold, 49 seconds hot. Rotor inertia is 20.26 Lb-Ft Sq (0.85 Kg-meter Sq).

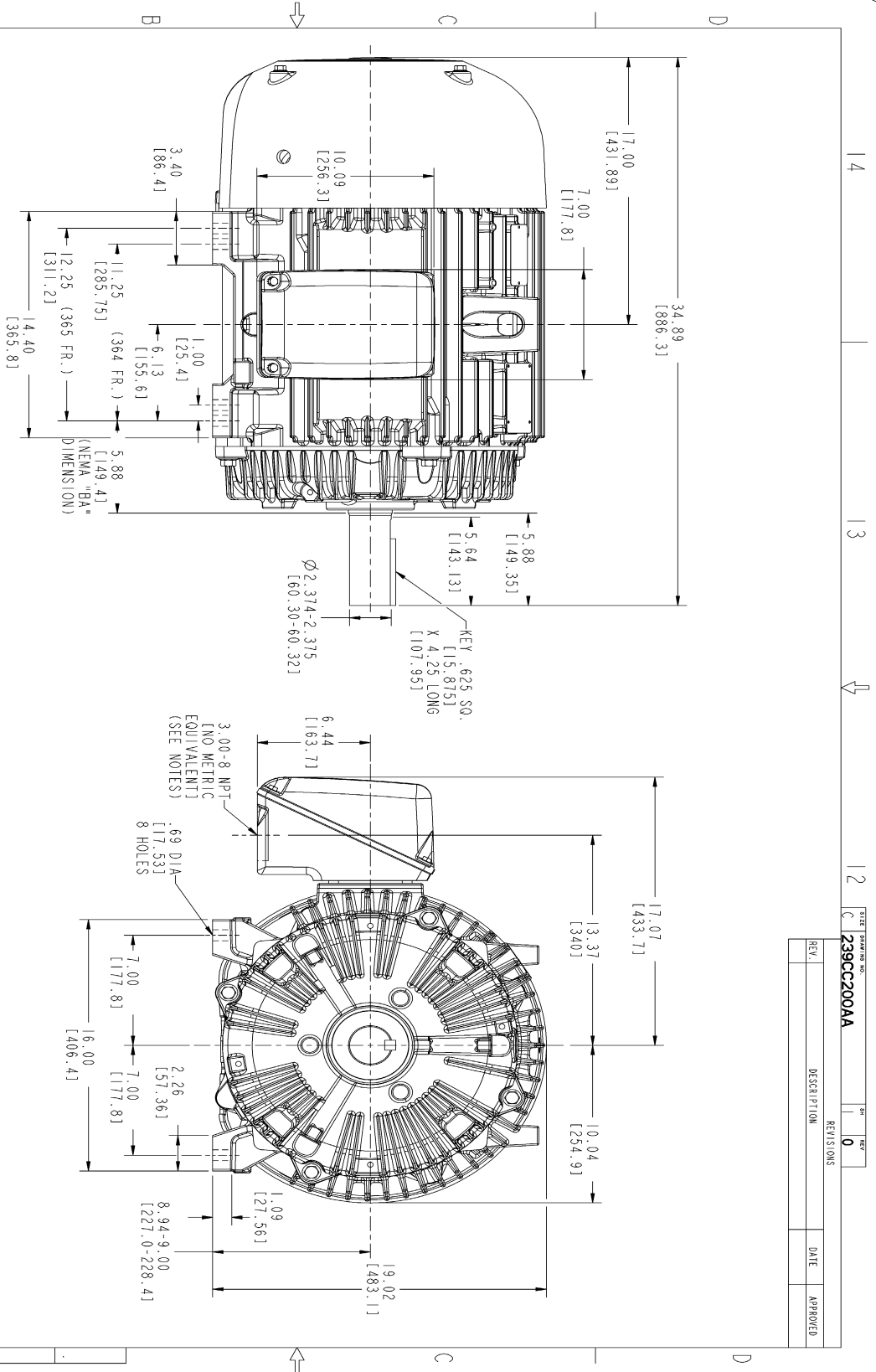
Open Circuit A-C:	0.449	Short Circuit D-C:	0.015
Short Circuit A-C:	0.027	X/R Ratio:	5.747
Stator Slots:	72	Rotor Slots:	58

Speed Torque Current Curve (First Connection, First Speed)



NAME:501352727 OBJECT:239CC200AA DATE:31-Jul-07 10:42:09

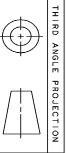
Marks:



NOTES :

1. CONDUIT BOX MAY BE PLACED WITH THE ENTRANCE DOWN, UP OR ON EITHER SIDE.
2. F-1 ASM AS SHOWN.
3. F-2 ASM-HAS CONDUIT BOX ON OPPOSITE SIDE.
4. BRACKETED DIMENSIONS ARE METRIC (MILLIMETERS).

DRAWING NO.		REV	
239CC200AA		10	
DESCRIPTION		REVISIONS	
REV.	DATE	APPROVED	



THIRD ANGLE PROJECTION

DESIGNED	DATE	 GE Industrial Systems GENERAL ELECTRIC COMPANY Fort Wayne, Indiana
DRAWN	DATE	
CHECKED	DATE	
ISSUED	DATE	
APPLIED PRACTICES		SIZING: 239CC200AA
SCALE: 0.250 REF. NO:		SHEET 1 OF 1

OUTLINE

364/365 T TERC ESP
346 CU. IN. CONDUIT BOX

Marks:

Connection Diagram
GEM2034E-FIG3

