

# Product Information Packet

October 6, 2016

Data shown is for the current revision model #. Ensure your nameplate model # matches.

<b>Model Number:</b>	<b>5CD143ME003B021</b>
<b>Catalog Number:</b>	<b>D406</b>
<b>Instruction Manual:</b>	GEH-3967N
<b>Connection Diagram:</b>	36A167960CA501
<b>Outline Drawing:</b>	36B467421PA002

<b>Accessory Connection Diagrams</b>			
<b>Bearing Thermocouple:</b>	None	<b>Heater:</b>	None
<b>RTD:</b>	None	<b>Thermistor:</b>	None
<b>Thermostat:</b>	None	<b>Winding Thermocouple:</b>	None
<b>Bearing RTD:</b>	None		

<b>Table of Contents</b>	
Specification	01
Outline Drawing	02
Connection Drawing(s)	03

Marks:

<b>MODEL NUMBER:</b>	5CD143ME003B021	<b>Enclosure Mtg Assem:</b>	36A167770GA201
<b>Outline Drawing:</b>	36B467421PA002	<b>Instruction Book:</b>	GEH-3967N
<b>Connection Diagram:</b>	36A167960CA501	<b>RPM:</b>	1750/2050
<b>Horsepower:</b>	2	<b>Armature Amps:</b>	9.4
<b>Armature Volts:</b>	180	<b>Type:</b>	CD186ACY
<b>Wound:</b>	SHUNT	<b>Power Supply Code:</b>	K
<b>Enclosure:</b>	DPFG	<b>Insulation Class:</b>	F
<b>Duty:</b>	CONT	<b>Ambient Max (°C):</b>	40 C
<b>Rating Code:</b>	143M1340-00	<b>Field Volts:</b>	200/100
<b>K(V):</b>	.92 Cemf volts/Radian/Sec	<b>WK2:</b>	.45Lb Ft2
<b>K(T):</b>	.64 Ft/Amp	<b>Year of Manufacture:</b>	2016
<b>Minimum Ambient:</b>	0 C	<b>Max Altitude:</b>	3300 Ft

Resistances at 25 Degrees C :

<b>Shunt Field:</b>	244 OHMS
<b>Armature:</b>	.6242 OHMS
<b>Commutator Field:</b>	.3055 OHMS

Inductances:

<b>Armature Circuit Total:</b>	17.330 mH Saturated
<b>Shunt Field:</b>	124.0 Henries Unsaturated

Shunt Field Data:

Shunt Field Current(1): .59 AMPS at Rated Load and 1750 RPM  
 Shunt Field Current(2): .5 AMPS at Rated Load and 1850 RPM  
 Shunt Field Current(3): .39 AMPS at Rated Load and 2050 RPM

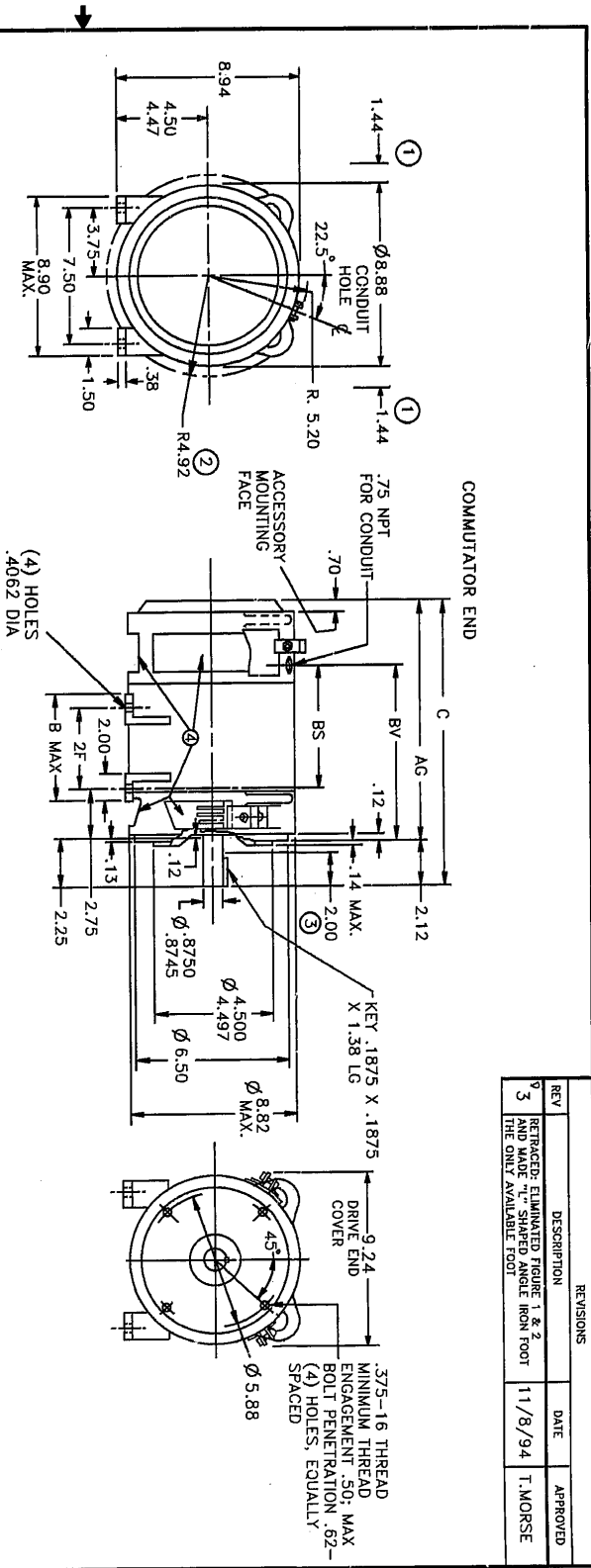
---

Additional Machine Notes:

DRIPPROOF FULLY GUARDED - BALL BEARINGS  
 SPECIAL SHAFT DRIVE END ONLY - WITH FEET  
 WITH:  
 CSA STAMP  
 THERMOSTAT- NORMALLY CLOSED, AC RATING- 600V MAX-  
 .5A, 250V-1.5A, OR 125V-3A, DC RATING- 30V MAX-  
 1.5A. MAXIMUM CURRENT BASED ON INDUCTIVE LOADS UP  
 TO AND INCLUDING NEMA NO.5 CONTACTOR.

Marks:

ORIGINAL TRACING

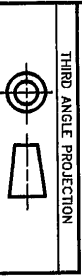


SIZE B DWG NO 36B467421PA

REVISIONS

REV	DESCRIPTION	DATE	APPROVED
3	RETRACTED- ELIMINATED FIGURE 1 & 2 AND MADE "C" SHAPED ANGLE IRON FOOT THE ONLY AVAILABLE FOOT	11/8/94	T. MORSE

PT. NO.	FRAME	B	C	2F	AG	BS	BV	APPROX. NET WT.
001	L182ACY	5.80	15.26	4.50	13.14	6.63	9.51	80 LBS
002	186ACY	8.30	16.76	7.00	14.64	8.13	11.01	102 LBS
003	L186ACY	8.30	18.76	7.00	16.64	10.13	13.01	128 LBS
004	189ACY	11.56	20.76	10.00	18.64	12.13	15.01	162 LBS



UNLESS OTHERWISE SPECIFIED

TOLERANCES IN INCHES

2 PL. DECIMALS ±

3 PL. DECIMALS ±

REVISIONS ±

NO S.O.

PLANNING REF: 36B467421PA & AA

FILE: 18-18

SCALE: B

GE MOTORS

GENERAL ELECTRIC COMPANY

ERIE, PA

OUTLINE - "C" FACE

DE - SPL

CE - ACS

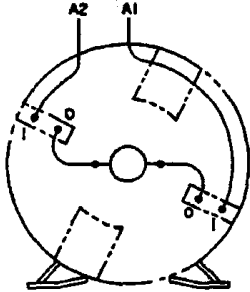
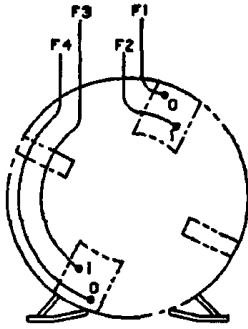
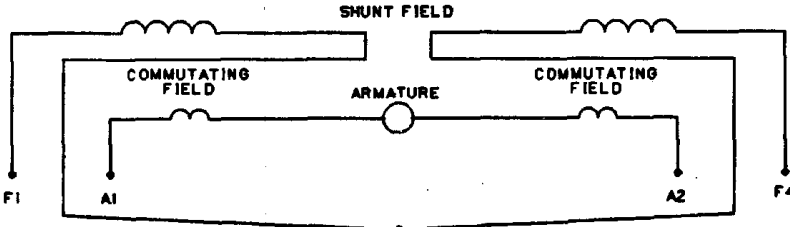
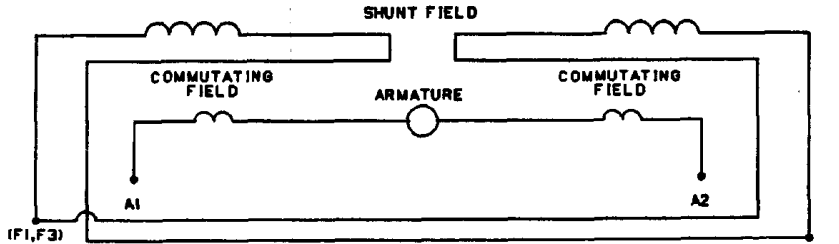
SIZE: B

DWG NO: 36B467421PA THRU 004

DISTR TO: 4943(3)

RST.B.36B467421PAR03

Marks:

NO S.O.	<b>GENERAL ELECTRIC</b>	36A167960CA501 CONT ON SHEET SH NO.
REV 1 36A167960CA501 CONT ON SHEET	TITLE <b>CONNECTION DIAGRAM</b>	SH NO.
SH NO.	FIRST MADE FOR 180AT 2 POLE	
DIRECT CURRENT MOTOR AND GENERATOR - SHUNT WOUND 1 OR 2 CIRCUIT SHUNT FIELD, 1 CIRCUIT COMMUTATING FIELD		
VIEWS FACING COMMUTATOR END		
 <p>COMMUTATING FIELD AND ARMATURE</p>	 <p>SHUNT FIELD</p>	
<p>ALL EXTERNAL LEADS ARE MARKED. ALL CONNECTIONS AND TERMINATIONS EXTERNAL TO MAGNET FRAME MUST BE INSULATED PER NATIONAL ELECTRICAL CODE AND SOUND LOCAL PRACTICES.</p> <p>SPACE HEATERS, WHEN SPECIFIED, WILL HAVE LEADS WITH TERMINAL MARKINGS H1 AND H2.</p> <p>THERMOSTAT, WHEN SPECIFIED, WILL HAVE LEADS WITH TERMINAL MARKINGS P1 AND P2.</p> <p>ENCIRCLED NUMBERS MAY BE USED FOR PART IDENTIFICATION.</p>		
<p>FOR HIGH NAMEPLATE EXCITATION VOLTAGE CONNECT SHUNT FIELD LEADS AS INDICATED</p>	 <p>(F2,F3)</p>	<p>SHUNT FIELD</p> <p>COMMUTATING FIELD</p> <p>ARMATURE</p> <p>COMMUTATING FIELD</p> <p>F1 A1 A2 F4</p>
<p>MOTOR CONNECTIONS: FOR CCW ROTATION FACING COMM END, MAKE LEADS F1 AND A1 THE SAME POLARITY. FOR CW ROTATION FACING COMM END, MAKE LEADS F1 AND A2 THE SAME POLARITY.</p>	<p>GENERATOR CONNECTIONS: FOR CW ROTATION FACING COMM END, F1 POSITIVE WILL MAKE A2 POSITIVE. FOR CCW ROTATION FACING COMM END, F1 POSITIVE WILL MAKE A2 POSITIVE.</p>	
<p>FOR LOW NAMEPLATE EXCITATION VOLTAGE CONNECT SHUNT FIELD LEADS AS INDICATED</p>	 <p>(F1,F3)</p>	<p>SHUNT FIELD</p> <p>COMMUTATING FIELD</p> <p>ARMATURE</p> <p>COMMUTATING FIELD</p> <p>A1 A2</p> <p>(F2,F4)</p>
<p>MOTOR CONNECTIONS: FOR CCW ROTATION FACING COMM END, MAKE LEADS (F1,F3) AND A1 THE SAME POLARITY. FOR CW ROTATION FACING COMM END, MAKE LEADS (F1,F3) AND A2 THE SAME POLARITY.</p>	<p>GENERATOR CONNECTIONS: FOR CW ROTATION FACING COMM END, (F1,F3) POSITIVE WILL MAKE A2 POSITIVE. FOR CCW ROTATION FACING COMM END, (F1,F3) POSITIVE WILL MAKE A1 POSITIVE.</p>	
<p>94-10-12 NO S.O. DC HILL RETRACED</p>	<p>MADE BY N STEWART 75-08-05</p> <p>RE-ISSUED CAD/DC Hill 94-10-12</p>	<p>APPROVALS FILE KC13-1</p> <p>GE MOTORS ERIE</p> <p>DIV OR DEPT LOCATION</p> <p>36A167960CA501 CONT ON SHEET SH NO.</p>

ORIGINAL FRACING

49-3131 4487 CAD

C5X.A.36A167960CA501R01