

Product Information Packet

November 7, 2016

Data shown is for the current revision model #. Ensure your nameplate model # matches.

Model Number:	5KS364ATE308A
Catalog Number:	E7024
Instruction Manual:	GEI-M1023
Connection Diagram:	GEM2034E-FIG8
Outline Drawing:	358B6219AA

Accessory Connection Diagrams			
Bearing Thermocouple:	None	Heater:	None
RTD:	None	Thermistor:	None
Thermostat:	None	Winding Thermocouple:	None
Bearing RTD:	None		

Table of Contents	
Specification	01
Performance Characteristics	02
Outline Drawing	03
Connection Drawing(s)	04

Marks:

MODEL NUMBER:	5KS364ATE308A	Estimated Weight:	750 Lbs
Outline Drawing:	358B6219AA	Time Rating:	CONT
Connection Diagram:	GEM2034E-FIG8	Enclosure:	DP
Instruction Book:	GEI-M1023	Encl Construction:	OPEN
Design Code:	36AD3003A	Ambient Max(°C):	40
Type:	KS	Alt Ambient Max(°C):	--
Frame:	364T	Insulation Class:	F
Phases:	3	NEMA Design:	A
Poles:	6	Nominal Efficiency:	94.1 %
Output Power:	40HP 29.6KW	Guaranteed Efficiency:	93.0
RPM:	1185	3/4 Load Efficiency:	94.4
Voltage:	460	KVA Code:	G
Hertz:	60	Max KVAR:	12.2
Amps - FL:	47.1	Power Factor:	82.5
Service Factor:	1.15	Bearing - DE:	6314
Alt Service Factor:	--	Bearing - ODE:	6313

Enclosure is Dripproof

Stamped Nameplate Notes:**Additional Information:**

6 POLE DP
 LRA: 299.8
 NO. OF MOTOR LEADS: 6
 CONDUIT BOX VOLUME (IN³): 550
 CONDUIT BOX MTL: STAMPED STEEL
 GREASE TYPE: CHEVRON SRI-2 POLYUREA GREASE
 NOT USABLE AT 200 VOLTS
 50 HZ DATA: 40HP, 200/400V, 55.1 AMPS AT 1.0SF, 980 RPM
 SOUND POWER: 78.7
 DMK, 06/04 DATA UPDATE 12/2004
 INVERTER DUTY PER NEMA MG1 PART 31
 FOR VARIABLE TORQUE LOADS

Performance Characteristics

1st Winding 1st Connection

Design: 36AD3003A

Marks:

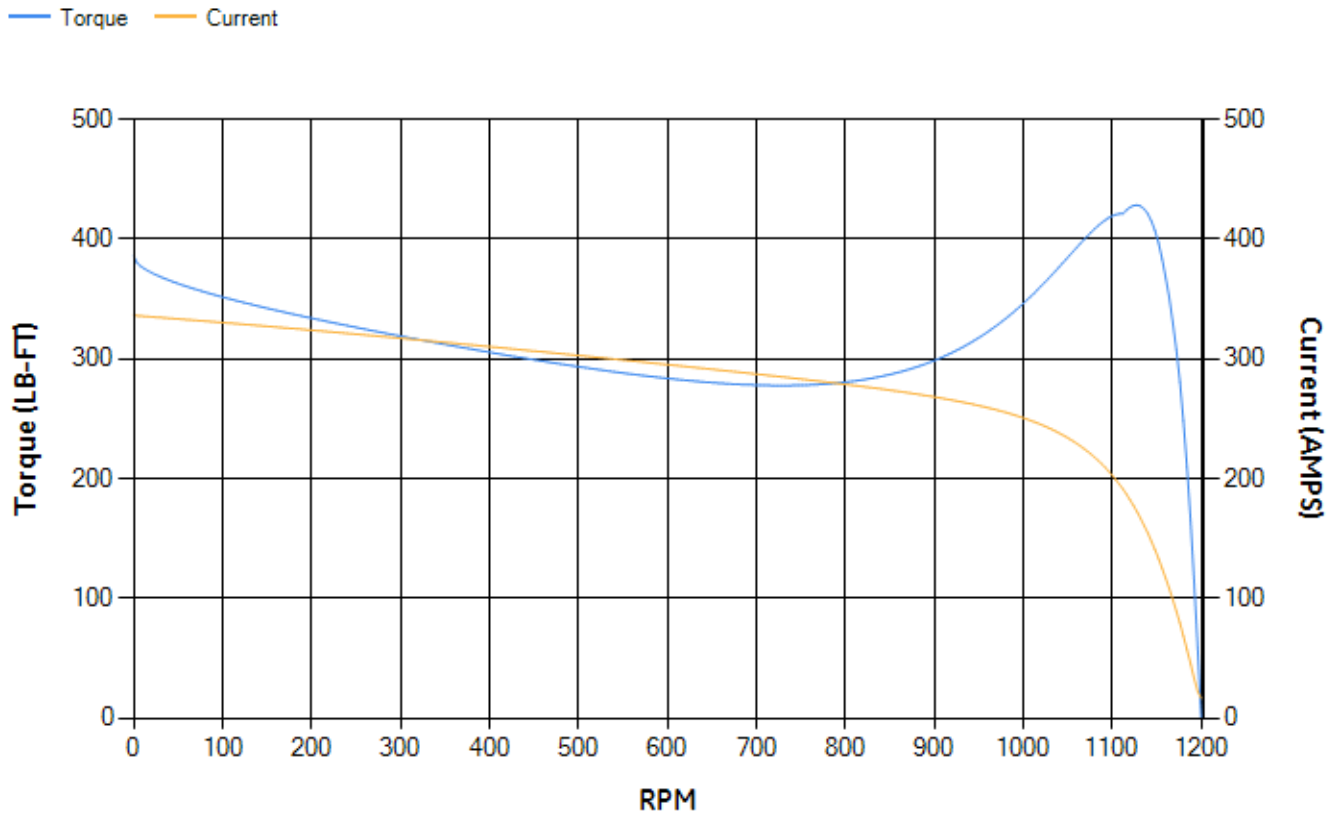
LOAD %	125.0	115.0	100.0	75.0	50.0	25.0	0.0
% EFF	93.45	93.75	94.31	94.4	93.96	91	0.00
% PF	84.72	84.52	83.73	80.44	72.14	51.15	4.92
AMPS	59.11	54.34	47.41	36.98	27.62	20.1	16.28

TORQ(FL)#FT	177.23	TORQ(LR)%FL	217.64	TORQ(BD)%FL	236.91
AMPS(LR)	336.21	PF AT START	0.34		

This motor is capable of two cold or one hot start with a maximum connected load inertia of 2985 Lb-Ft Sq (125.67 Kg-meter Sq)at 100% voltage, where the load torque varies with the square of the speed. Acceleration time with maximum inertia and the above load type is 44 seconds. Safe stall time at 100% voltage is 75 seconds cold, 62 seconds hot. Rotor inertia is 15.98 Lb-Ft Sq (0.67 Kg-meter Sq).

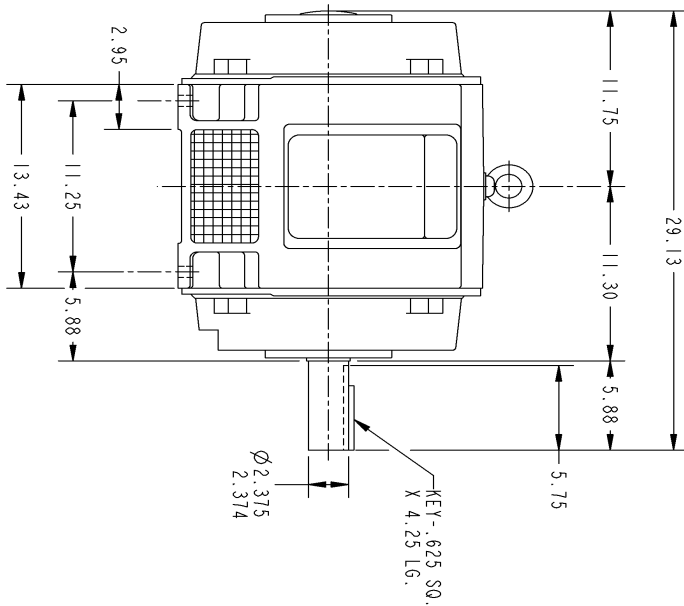
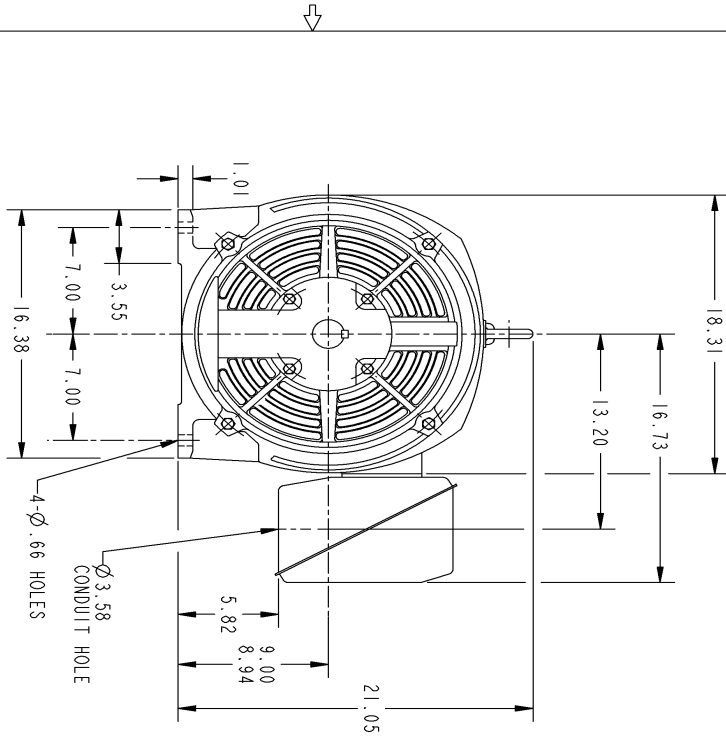
Open Circuit A-C:	0.606	Short Circuit D-C:	0.019
Short Circuit A-C:	0.027	X/R Ratio:	7.292
Stator Slots:	72	Rotor Slots:	58

Speed Torque Current Curve (First Connection, First Speed)



NAME:501053131 OBJECT:358B6219AA DATE:02-May-07 09:10:20

Marks:

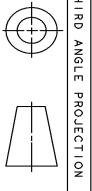


SIZE: DRAWING FOR
358B6219AA
 GE PROPRIETARY INFORMATION

REV.	DESCRIPTION	DATE	APPROVED
1	ISAAC 07-0770	04/27/07	RHONDA

NOTES :

- CONDUIT BOX MAY BE PLACED WITH THE ENTRANCE DOWN, UP OR ON EITHER SIDE.
- F-1 ASM AS SHOWN.
- F-2 ASM - HAS CONDUIT BOX ON OPPOSITE SIDE.



UNLESS OTHERWISE SPECIFIED: DIMENSIONS ARE IN INCHES	SIGNATURES	DATE	<p>GENERAL ELECTRIC COMPANY Fort Wayne, Indiana</p>
TOLERANCE ON: 2 PL. DECIMALS ± . 3 PL. DECIMALS ± . ANGLES ± 1°	DRAWN PRABHAKAR 03/27/03	03/27/03	
CHECKED ENGR PRABHAKAR 03/27/03	ISSUED PRABHAKAR 03/27/03		
MATERIAL: APPLIED PRACTICES	SIZE DRAWING 358B6219AA	SCALE: DRAWING SCALE	REV. 1

DISTRIBUTION:

Marks:

Connection Diagram
GEM2034E-FIG8

