

Product Information Packet

April 16, 2017

Data shown is for the current revision model #. Ensure your nameplate model # matches.

| | |
|----------------------------|-----------------------|
| Model Number: | 5KS444LAA118D3 |
| Catalog Number: | M7916 |
| Instruction Manual: | GEI-56128 |
| Connection Diagram: | GEM2034E-FIG7 |
| Outline Drawing: | 239CC600AB |

| Accessory Connection Diagrams | | | |
|--------------------------------------|------|------------------------------|------|
| Bearing Thermocouple: | None | Heater: | None |
| RTD: | None | Thermistor: | None |
| Thermostat: | None | Winding Thermocouple: | None |
| Bearing RTD: | None | | |

Table of Contents

| | |
|-----------------------------|----|
| Specification | 01 |
| Performance Characteristics | 02 |
| Outline Drawing | 03 |
| Connection Drawing(s) | 04 |
| Spare parts | 05 |



Marks:

| | | | |
|----------------------------|-----------------------|-------------------------------|----------|
| MODEL NUMBER: | 5KS444LAA118D3 | Estimated Weight: | 1790 Lbs |
| Outline Drawing: | 239CC600AB | Time Rating: | CONT |
| Connection Diagram: | GEM2034E-FIG7 | Enclosure: | TEFC |
| Instruction Book: | GEI-56128 | Encl Construction: | SD |
| Design Code: | 44BD0095AA | Ambient Max(°C): | 40 |
| Type: | KS | Alt Ambient Max(°C): | -- |
| Frame: | 444TS | Insulation Class: | F |
| Phases: | 3 | NEMA Design: | A |
| Poles: | 2 | Nominal Efficiency: | 95.0 % |
| Output Power: | 125HP 92.5KW | Guaranteed Efficiency: | 94.1 |
| RPM: | 3580 | 3/4 Load Efficiency: | 94.7 |
| Voltage: | 460 | KVA Code: | G |
| Hertz: | 60 | Max KVAR: | 33.6 |
| Amps - FL: | 142.0 | Power Factor: | 87.0 |
| Service Factor: | 1.15 | Bearing - DE: | 6314ZC3 |
| Alt Service Factor: | -- | Bearing - ODE: | 6314ZC3 |

Enclosure is Totally Enclosed Fan-Cooled

Stamped Nameplate Notes:

INVERTER DUTY PER NEMA MG1 PART 31
 ALTERNATE RATING FOR PWM CONTROL:1.0SF 40C AMBIENT
 VAR TORQUE RANGE 0-60 HZ

Additional Information:

2P - TS EXTN
 700 CU IN - 3.00" NPT
 OIL RESISTANT SLEEVING ON LEADS
 F1 MOUNTING
 VIBRATION LIMIT 0.15 INCH PER SEC

Performance Characteristics

1st Winding 1st Connection

Design: 44BD0095AA

Marks:

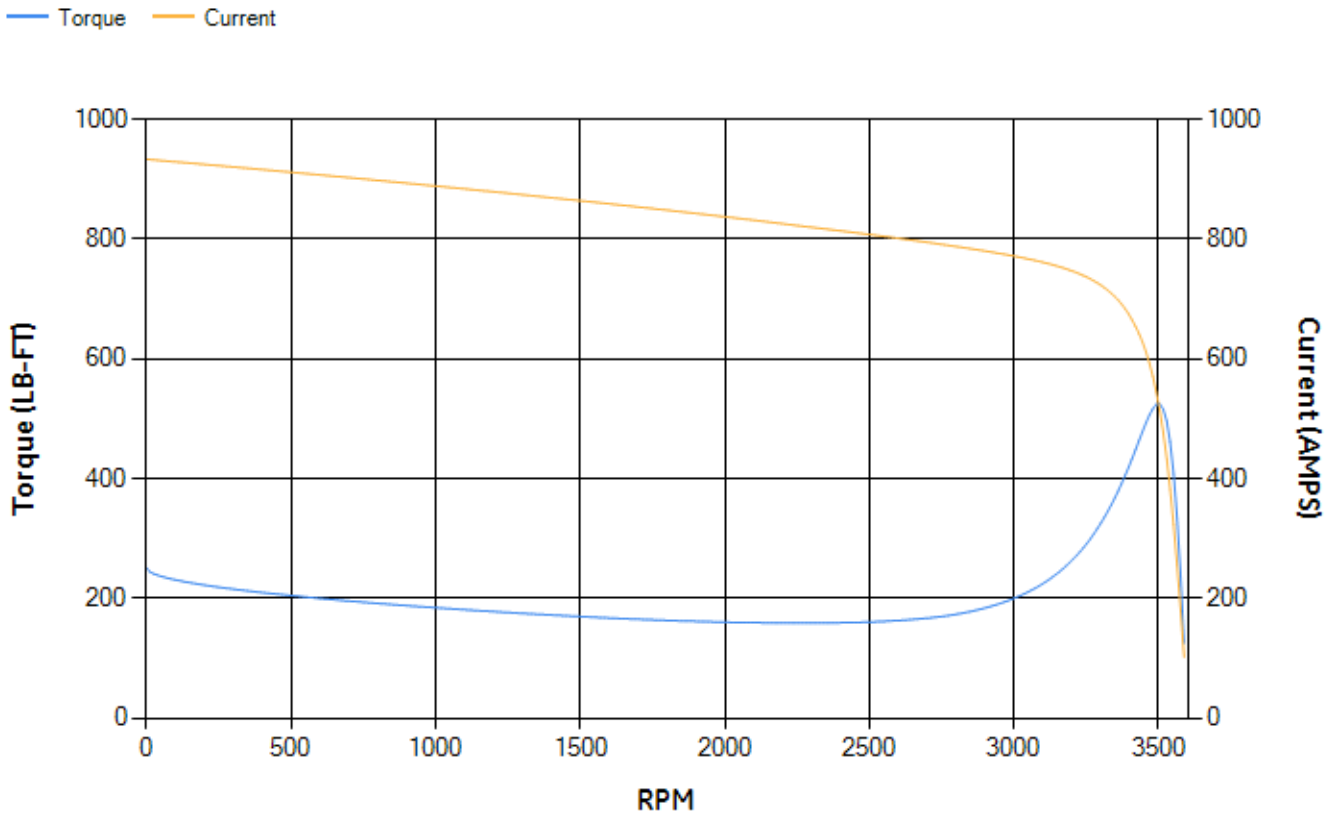
| LOAD % | 125.0 | 115.0 | 100.0 | 75.0 | 50.0 | 25.0 | 0.0 |
|--------|-------|--------|--------|--------|-------|-------|-------|
| % EFF | 94.71 | 94.8 | 95.07 | 94.66 | 93.63 | 89.65 | 0.00 |
| % PF | 88.28 | 88.01 | 87.21 | 84.14 | 76.4 | 55.73 | 6.58 |
| AMPS | 174.9 | 161.24 | 141.12 | 110.17 | 81.77 | 58.54 | 46.78 |

| | | | | | |
|--------------------|--------|--------------------|-------|--------------------|--------|
| TORQ(FL)#FT | 183.31 | TORQ(LR)%FL | 136.6 | TORQ(BD)%FL | 286.23 |
| AMPS(LR) | 933.29 | PF AT START | 0.19 | | |

This motor is capable of two cold or one hot start with a maximum connected load inertia of 405 Lb-Ft Sq (17.05 Kg-meter Sq) at 100% voltage, where the load torque varies with the square of the speed. Acceleration time with maximum inertia and the above load type is 35 seconds. Safe stall time at 100% voltage is 76 seconds cold, 42 seconds hot. Rotor inertia is 21.14 Lb-Ft Sq (0.89 Kg-meter Sq).

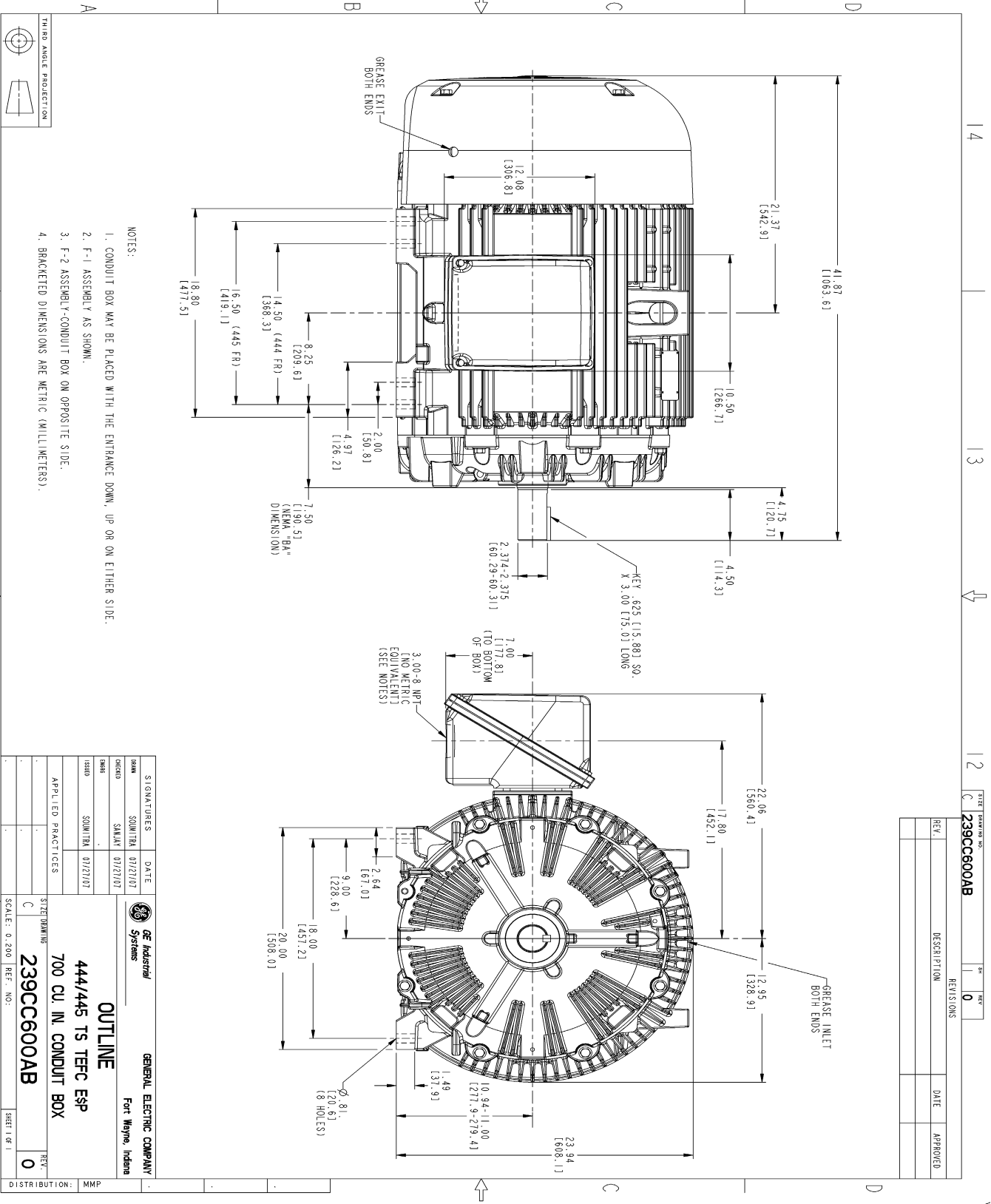
| | | | |
|---------------------------|-------|---------------------------|--------|
| Open Circuit A-C: | 1.403 | Short Circuit D-C: | 0.036 |
| Short Circuit A-C: | 0.074 | X/R Ratio: | 13.661 |
| Stator Slots: | 48 | Rotor Slots: | 38 |

Speed Torque Current Curve (First Connection, First Speed)



NAME:501352727 OBJECT:239CC600AB DATE:31-Jul-07 14:05:02

Marks:



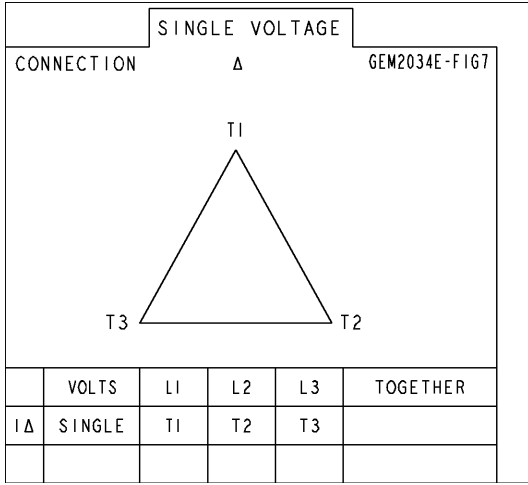
- NOTES:
1. CONDUIT BOX MAY BE PLACED WITH THE ENTRANCE DOWN, UP OR ON EITHER SIDE.
 2. F-1 ASSEMBLY AS SHOWN.
 3. F-2 ASSEMBLY-CONDUIT BOX ON OPPOSITE SIDE.
 4. BRACKETED DIMENSIONS ARE METRIC (MILLIMETERS).

| REV. | DESCRIPTION | DATE | APPROVED |
|------|-------------|------|----------|
| | | | |
| | | | |
| | | | |

| SIGNATURES | DATE | GENERAL ELECTRIC COMPANY Fort Wayne, Indiana |
|----------------------------|-----------|--|
| DESIGNED SMLAN 01/21/07 | 01/21/07 | OUTLINE 444/445 TS TERC Esp 700 CU. IN. CONDUIT BOX 239CC600AB |
| DRAWN SMLAN 01/21/07 | 01/21/07 | |
| APPLIED PRACTICES | | |
| SCALE: 0.200 | REF. NO.: | |
| DISTRIBUTION: MMP | | |

Marks:

Connection Diagram
GEM2034E-FIG7



| End shield Assembly | | |
|---------------------|---------------|----------------|
| Part Description | DE Side Part# | ODE Side Part# |
| End Shield | 115E4354AA1 | 115E4354LL1 |
| Bearing | 235A2616AA01 | 235A2616AA01 |
| Slinger/Inproseal | 149C4399G05 | 149C4399G05 |

| Fan & Fan Cover Assembly | |
|--------------------------|-------------|
| Part Description | Part# |
| Fan | 159C7100AA1 |
| Fan Cover | 128D6841AA1 |

| Conduit & Accessories Box Assembly | |
|------------------------------------|-------------|
| Part Description | Part# |
| Conduit Box | 118D4408AD2 |

| Mechanical Accessories | |
|------------------------|-------|
| Part Description | Part# |
| Brake | |
| Tachometer | |