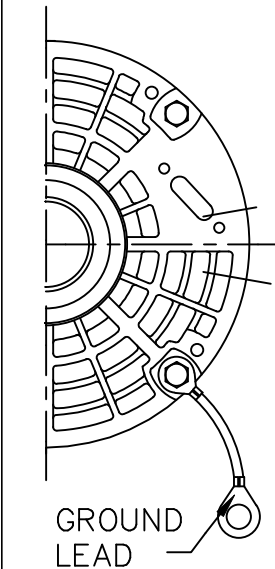
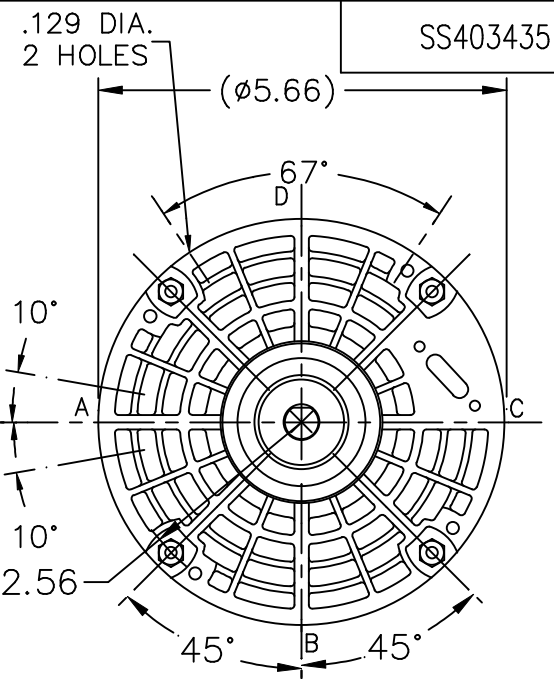
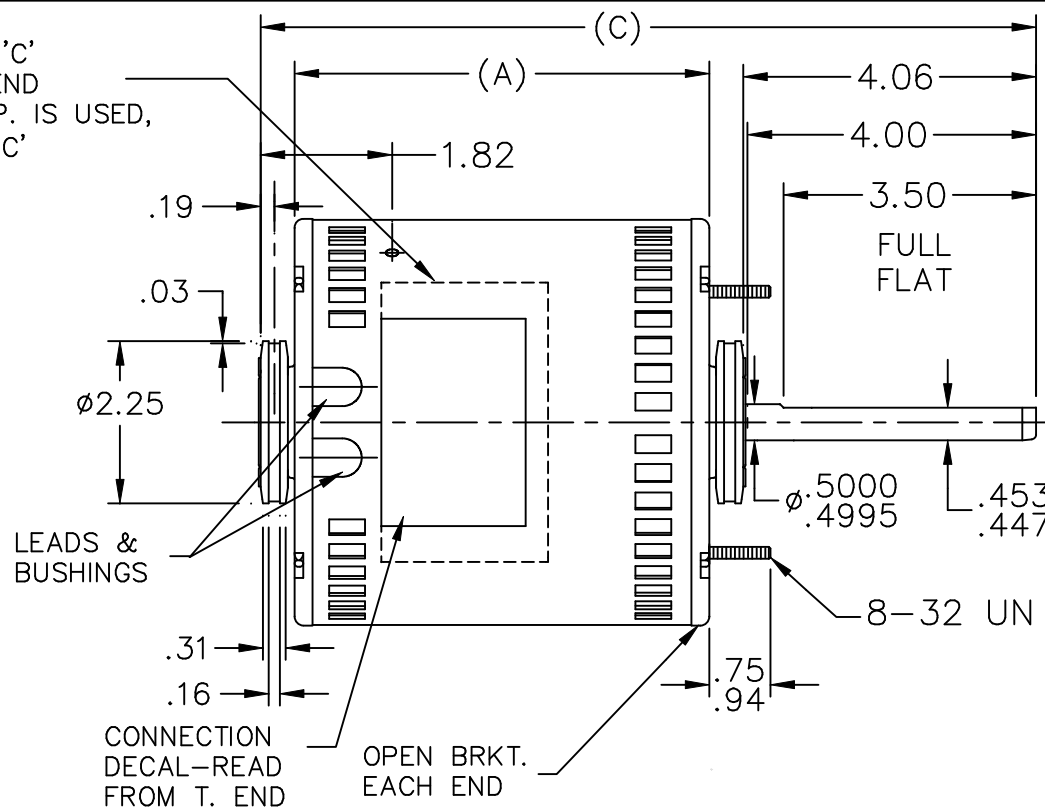


NAMEPLATE LOC. @ 'C'
 READ FROM TERM. END
 WHEN TWO PART N.P. IS USED,
 CENTER PIECES AT 'C'



TERM. END



LEAD DESCRIPTION:

1 WHITE, 1 BLACK, 1 BLUE, & 1 RED LEAD WITH .50 BARE WIRE STRIP. 30.00" LONG

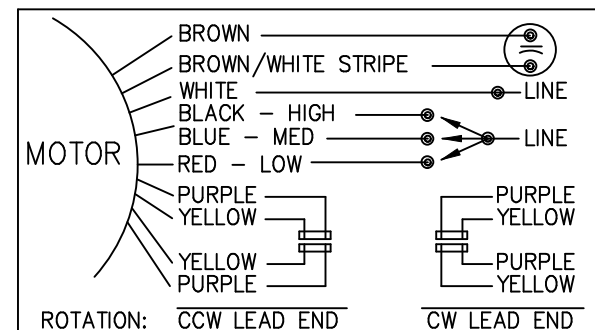
2 BROWN LEADS WITH .25 FLAG-TYPE QUICK CONNECTS 30.00" LONG. BROWN/WHITE MARKED LEAD IS COMMON TO WHITE.

REVERSING LEADS ARE MOLDED INTO MATING PULL-APART PLUGS. 1 YELLOW & 1 PURPLE LEAD PER PLUG. 5.00" LONG.

GREEN GROUND LEAD WITH TERM. FOR #10 SCREW 12.00" LONG.

DASH	FR.	C	A
475	48Y	10.25	5.25
525	48Y	10.75	5.75

124/2008



NO.	REVISION	BY & DATE	CHK	ANG	TOLERANCES UNLESS SPECIFIED	
					DEC.	INCHES
					.X	±.1
					.XX	±.03
					.XXX	±.005
					.XXXX	±.0005
					ANG	±7'30"

<p>TITLE OUTLINE</p> <p>MAT'L.</p> <p>FINISH</p>	DRAWN NJS 08-19-2004
	CHK ML 08-19-2004
	APPD MJS 08-19-2004
	SCALE 3=8
	REF
	FMF MU61357
	PREV

THIS DRAWING IN DESIGN AND DETAIL IS OUR PROPERTY AND MUST NOT BE USED EXCEPT IN CONNECTION WITH OUR WORK ALL RIGHTS OF DESIGN AND INVENTION ARE RESERVED THIS IS AN ELECTRONICALLY GENERATED DOCUMENT - DO NOT SCALE THIS PRINT

RFP 08-19-2004	CAD FILE SS403435	SIZE A	DRAWING NO. SS403435	PAGE OF	REV.
DIST WP					