

Product Information Packet

January 12, 2017

Data shown is for the current revision model #. Ensure your nameplate model # matches.

| | |
|----------------------------|----------------------|
| Model Number: | 5KS213CAA205C |
| Catalog Number: | E9669 |
| Instruction Manual: | GEI-56128 |
| Connection Diagram: | GEM2034E-FIG9 |
| Outline Drawing: | 4002B5821RAP5201 |

| Accessory Connection Diagrams | | | |
|-------------------------------|-----------|------------------------------|------|
| Bearing Thermocouple: | None | Heater: | None |
| RTD: | None | Thermistor: | None |
| Thermostat: | 3027JE-2A | Winding Thermocouple: | None |
| Bearing RTD: | None | | |

| Table of Contents | |
|-----------------------------|----|
| Specification | 01 |
| Performance Characteristics | 02 |
| Outline Drawing | 03 |
| Connection Drawing(s) | 04 |

Marks:

| | | | |
|----------------------------|----------------------|-------------------------------|---------|
| MODEL NUMBER: | 5KS213CAA205C | Estimated Weight: | 200 Lbs |
| Outline Drawing: | 4002B5821RAP5201 | Time Rating: | CONT |
| Connection Diagram: | GEM2034E-FIG9 | Enclosure: | TEFC |
| Instruction Book: | GEI-56128 | Encl Construction: | XP |
| Design Code: | 21BD1152A | Ambient Max(°C): | 40 |
| Type: | KS | Alt Ambient Max(°C): | -- |
| Frame: | 213T | Insulation Class: | F |
| Phases: | 3 | NEMA Design: | B |
| Poles: | 4 | Nominal Efficiency: | 91.7 % |
| Output Power: | 7.5HP 5.6KW | Guaranteed Efficiency: | 90.2 |
| RPM: | 1770 | 3/4 Load Efficiency: | 92.2 |
| Voltage: | 230/460 | KVA Code: | H |
| Hertz: | 60 | Max KVAR: | 2.3 |
| Amps - FL: | 18.4/9.2 | Power Factor: | 83.5 |
| Service Factor: | 1.00 | Bearing - DE: | 6208ZC3 |
| Alt Service Factor: | -- | Bearing - ODE: | 6208ZC3 |

Enclosure is Totally Enclosed Fan-Cooled

Stamped Nameplate Notes:

EXPLOSION PROOF MOTOR
TEMP CODE T3C
THERMOSTAT LEADS TB1-TB2
STAMP NP249A5571AD "CL I (C & D) CL II (F & G)"

Additional Information:

4P - T EXTN
STANDARD FLOOR MOUNT
C/BOX 26 CU IN-1.00 NPT
F1 CONDUIT BOX MOUNTING
AUX LEADS EXIT WITH MOTOR LEADS
CL I C & D CL II F & G EXPLOSION PROOF MOTOR

Performance Characteristics

1st Winding 1st Connection

Design: 21BD1152A

Marks:

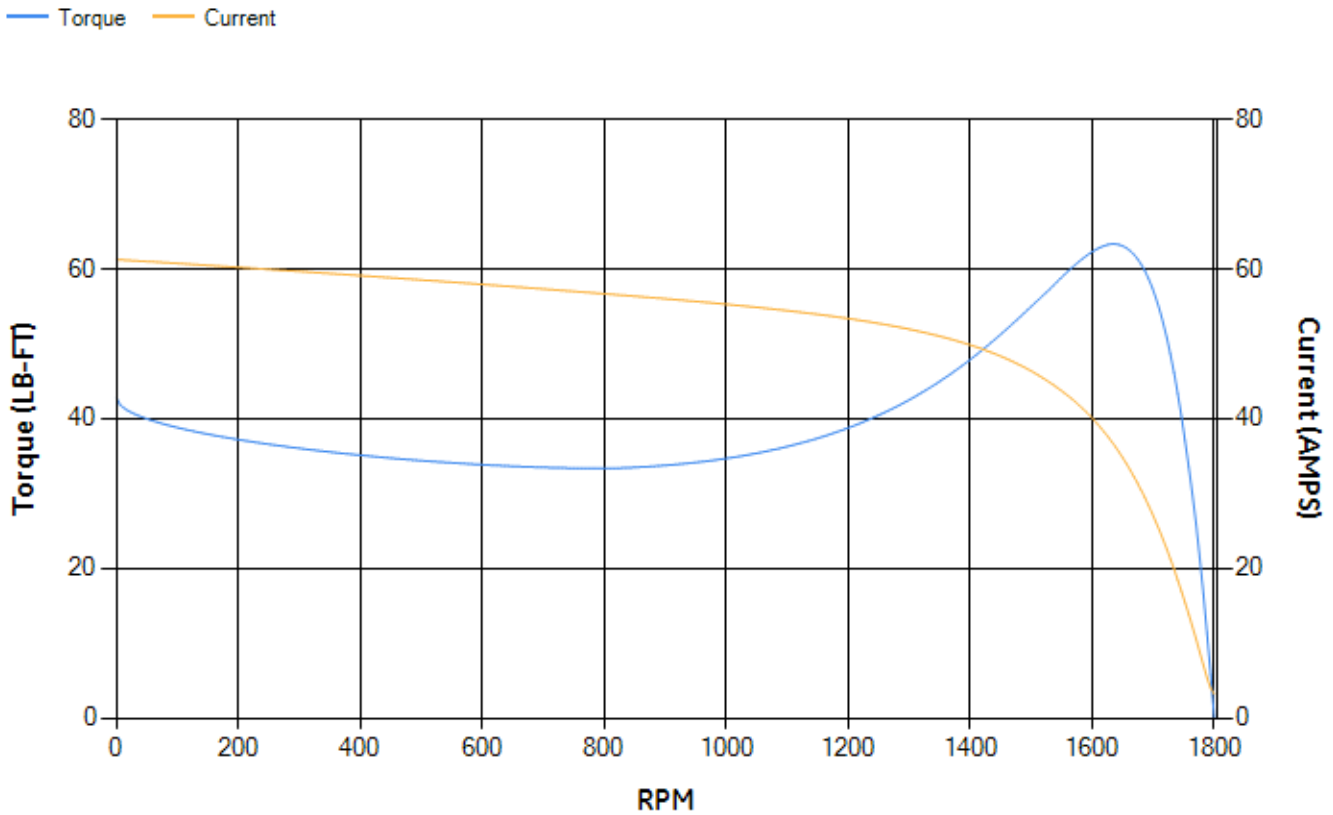
| LOAD % | 125.0 | 115.0 | 100.0 | 75.0 | 50.0 | 25.0 | 0.0 |
|--------|-------|-------|-------|-------|-------|-------|------|
| % EFF | 90.56 | 91.05 | 91.84 | 92.16 | 91.69 | 87.87 | 0.00 |
| % PF | 84.61 | 84.44 | 83.67 | 80.32 | 71.89 | 50.99 | 6.51 |
| AMPS | 11.45 | 10.5 | 9.14 | 7.11 | 5.33 | 3.92 | 3.21 |

| | | | | | |
|--------------------|-------|--------------------|--------|--------------------|-------|
| TORQ(FL)#FT | 22.25 | TORQ(LR)%FL | 192.51 | TORQ(BD)%FL | 282.9 |
| AMPS(LR) | 61.27 | PF AT START | 0.4 | | |

This motor is capable of two cold or one hot start with a maximum connected load inertia of 306 Lb-Ft Sq (12.88 Kg-meter Sq) at 100% voltage, where the load torque varies with the square of the speed. Acceleration time with maximum inertia and the above load type is 54 seconds. Safe stall time at 100% voltage is 120 seconds cold, 89 seconds hot. Rotor inertia is 1 Lb-Ft Sq (0.04 Kg-meter Sq).

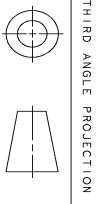
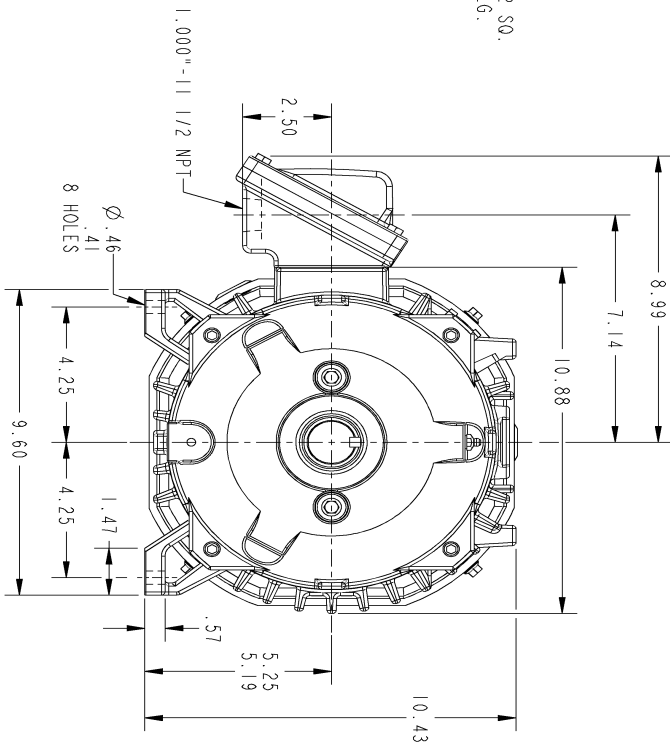
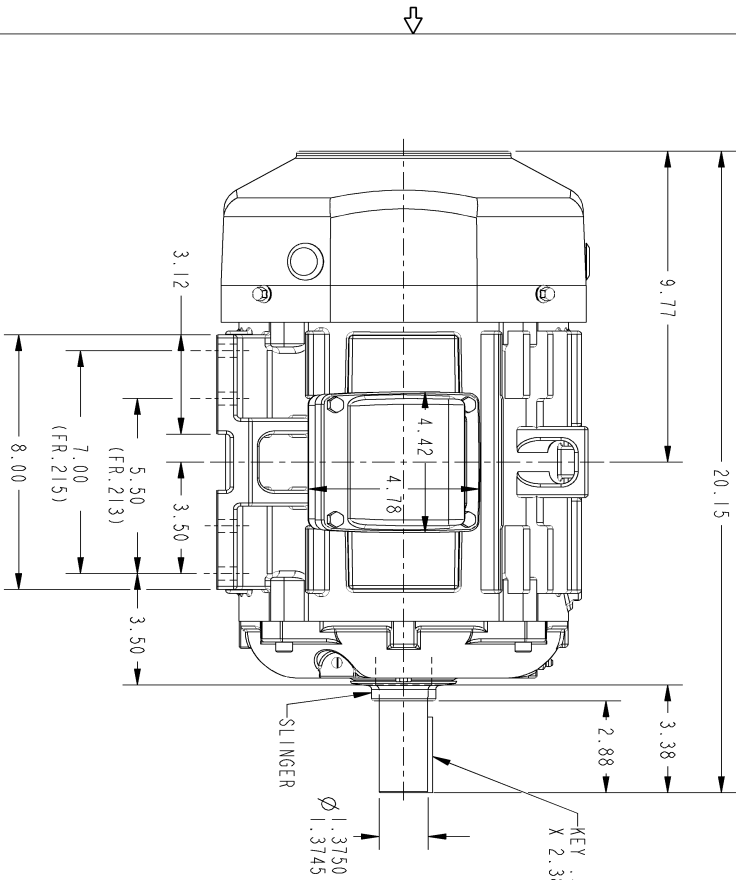
| | | | |
|---------------------------|-------|---------------------------|-------|
| Open Circuit A-C: | 0.449 | Short Circuit D-C: | 0.013 |
| Short Circuit A-C: | 0.021 | X/R Ratio: | 4.935 |
| Stator Slots: | 36 | Rotor Slots: | 28 |

Speed Torque Current Curve (First Connection, First Speed)



Marks:

NOTE 1: CONDUIT BOX MAY BE ASSEMBLED WITH ENTRANCE UP, DOWN OR TO EITHER SIDE.
 NOTE 2: F1 ASSEMBLY AS SHOWN. F2 ASSEMBLY CONDUIT BOX ON OPPOSITE SIDE FROM SHOWN LOCATION.
 NOTE 3: MOUNTING SURFACES TO BE SQUARE AND CONCENTRIC WITH SHAFT WITHIN .004 T.I.R.
 NOTE 4: SHAFT RUNOUT NOT TO EXCEED .002 T.I.R.



SIZE B DRAWING NO. 4002B5821RAP5201

SH 1 REV 1

| REVISIONS | | | |
|-----------|--------------|----------|----------|
| REV. | DESCRIPTION | DATE | APPROVED |
| 1 | ISAC#14-0486 | 06/17/14 | KARTHIK |

| SIGNATURES | DATE |
|-------------------|----------|
| DRMAN BHARTHI | 06/20/03 |
| CHECKED ANAND | 06/20/03 |
| ENGRS BHARTHI | 06/20/03 |
| ISSUED | |
| APPLIED PRACTICES | |

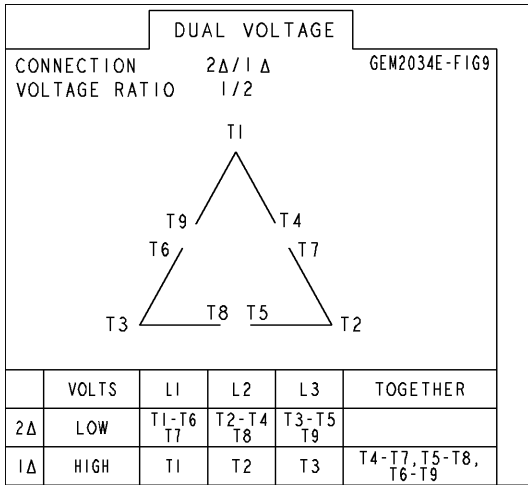
GE Industrial Systems
GENERAL ELECTRIC COMPANY
 Fort Wayne, Indiana

INDUCTION MOTOR OUTLINE
 STANDARD CONSTRUCTION
 FME: FR210T TFC EXPLOSION PROOF 26 CU IN. C/BOX
 SIZE DRAWING 4002B5821RAP5201 REV. 1
 SCALE: 0.300 REF. NO.: 4002B5821RAP201 SHEET 1 OF 1

DISTRIBUTION: PMP-1BK15

Marks:

Connection Diagram
GEM2034E-FIG9



Thermostat Connection
3027JE-2A

