

# Product Information Packet

November 7, 2016

Data shown is for the current revision model #. Ensure your nameplate model # matches.

<b>Model Number:</b>	<b>5CD226AA002B024</b>
<b>Catalog Number:</b>	<b>D620</b>
<b>Instruction Manual:</b>	GEH-3967N
<b>Connection Diagram:</b>	36A167910JB502
<b>Outline Drawing:</b>	36A167969BC003

<b>Accessory Connection Diagrams</b>			
<b>Bearing Thermocouple:</b>	None	<b>Heater:</b>	None
<b>RTD:</b>	None	<b>Thermistor:</b>	None
<b>Thermostat:</b>	None	<b>Winding Thermocouple:</b>	None
<b>Bearing RTD:</b>	None		

<b>Table of Contents</b>	
Specification	01
Outline Drawing	02
Connection Drawing(s)	03

**Marks:**

<b>MODEL NUMBER:</b>	<b>5CD226AA002B024</b>	<b>Enclosure Mtg Assem:</b>	36A167775AC001
<b>Outline Drawing:</b>	36A167969BC003	<b>Instruction Book:</b>	GEH-3967N
<b>Connection Diagram:</b>	36A167910JB502	<b>RPM:</b>	1750/1900
<b>Horsepower:</b>	500	<b>Armature Amps:</b>	781
<b>Armature Volts:</b>	500	<b>Type:</b>	CD5010AY
<b>Wound:</b>	SHUNT	<b>Power Supply Code:</b>	C
<b>Enclosure:</b>	DPFG-SV	<b>Insulation Class:</b>	F
<b>Duty:</b>	CONT	<b>Ambient Max (°C):</b>	40 C
<b>Rating Code:</b>	226A1360-00	<b>Field Volts:</b>	300/150
<b>K(V):</b>	2.69 Cemf volts/Radian/Sec	<b>WK2:</b>	157.30Lb Ft2
<b>K(T):</b>	1.92 Ft/Amp	<b>Year of Manufacture:</b>	2016
<b>Minimum Ambient:</b>	0 C	<b>Max Altitude:</b>	3300 Ft

**Resistances at 25 Degrees C :**

<b>Shunt Field:</b>	30.2 OHMS
<b>Armature:</b>	.0053 OHMS
<b>Commutator Field:</b>	.0018 OHMS

**Inductances:**

<b>Armature Circuit Total:</b>	.400 mH Saturated
<b>Shunt Field:</b>	60.0 Henries Unsaturated

**Shunt Field Data:**

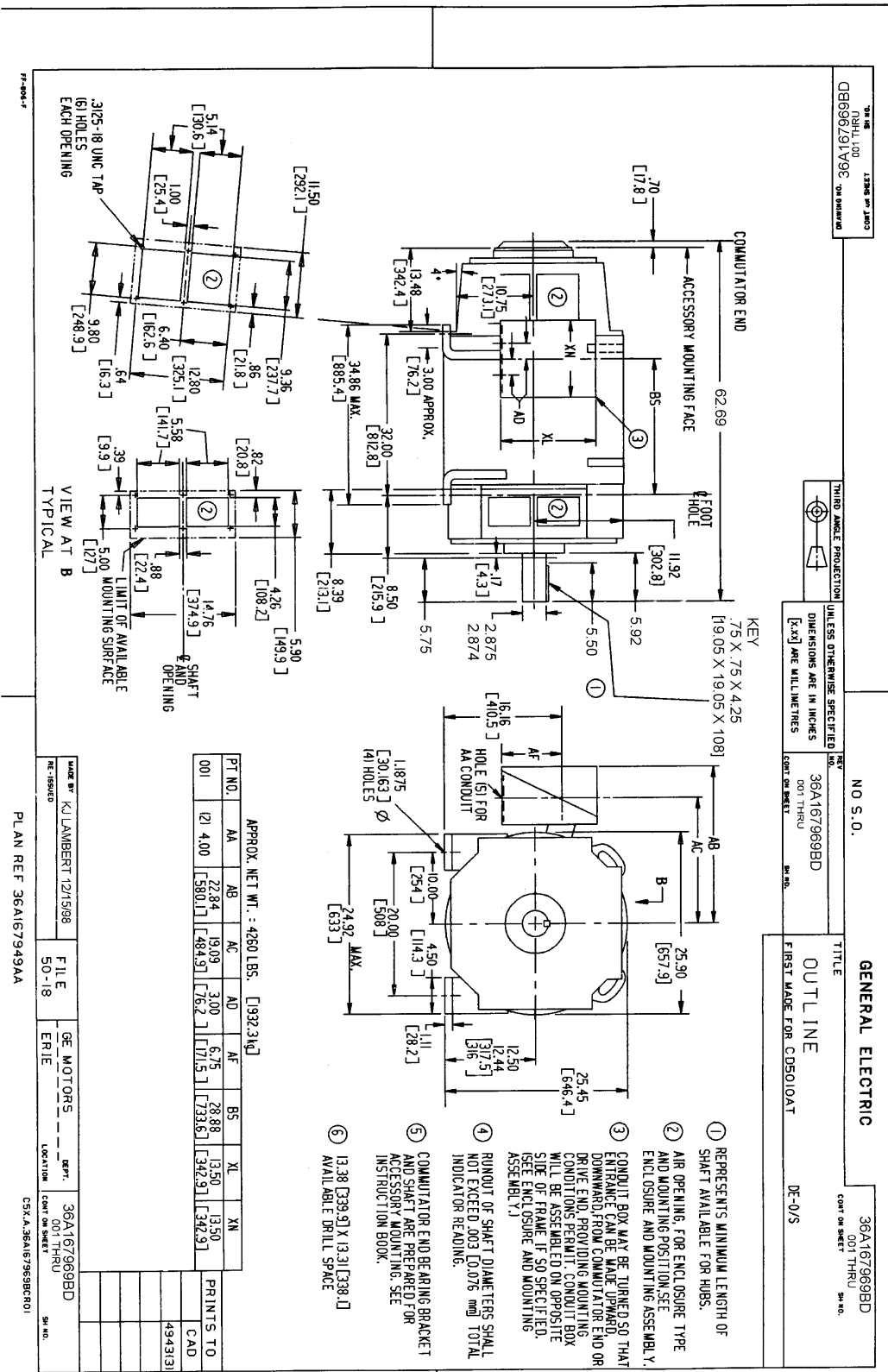
Shunt Field Current(1): 8.25 AMPS at Rated Load and 1750 RPM  
 Shunt Field Current(2): 7.77 AMPS at Rated Load and 1800 RPM  
 Shunt Field Current(3): 6.95 AMPS at Rated Load and 1900 RPM

**Additional Machine Notes:**

DRIPPROOF FULLY GUARDED, SEPARATELY VENTILATED  
 - BALL BEARINGS  
 CONDUIT BOX ON RIGHT HAND SIDE FACING COMMUTATOR END  
 SPECIAL SHAFT DRIVE END ONLY - WITH FEET  
 SEPARATELY VENTILATED AT 1425 CFM  
 PRESSURE DROP AT 3.0 INCHES OF WATER  
 WITH:  
 CSA STAMP  
 THERMOSTAT- NORMALLY CLOSED, AC RATING- 600V MAX-  
 .5A, 250V-1.5A, OR 125V-3A- DC RATING- 30V MAX-  
 1.5A. MAXIMUM CURRENT BASED ON INDUCTIVE LOADS UP  
 TO AND INCLUDING NEMA NO. 5 CONTACTOR.



Marks:



Marks:

NO S.O.	<b>GENERAL ELECTRIC</b>	36A167910JB502
REV NO. 1	TITLE	CONT ON SHEET SH NO.
36A167910JB502		CONNECTION DIAGRAM
CONT ON SHEET SH NO.	FIRST MADE FOR 4 POLE (EW) (VERY HI AMP)	
DIRECT CURRENT MOTOR AND GENERATOR - SHUNT WOUND 1 OR 2 CIRCUIT SHUNT FIELD - 2 CIRCUIT COMMUTATING FIELD		
<p>COMM &amp; ARMATURE FIELD VIEW FACING COMMUTATOR END-LEADS OUT RIGHT SIDE</p>	<p>SHUNT FIELD</p>	
<p>COMM &amp; ARMATURE FIELD VIEW FACING COMMUTATOR END-LEADS OUT LEFT SIDE</p>	<p>SHUNT FIELD</p>	
<p>ALL EXTERNAL LEADS ARE MARKED. ALL CONNECTIONS AND TERMINATIONS EXTERNAL TO MAGNET FRAME MUST BE INSULATED PER NATIONAL ELECTRICAL CODE AND SOUND LOCAL PRACTICES. LIKE MARKINGS ARE TO BE BOLTED TOGETHER. SPACE HEATERS, WHEN SPECIFIED, WILL HAVE LEADS WITH TERMINAL MARKINGS H1 AND H2. THERMOSTAT, WHEN SPECIFIED, WILL HAVE LEADS WITH TERMINAL MARKINGS P1 AND P2. ENCIRCLED NUMBERS MAY BE USED FOR PART IDENTIFICATION.</p>		
<p>FOR HIGH NAMEPLATE EXCITATION VOLTAGE CONNECT SHUNT FIELD LEADS AS INDICATED</p>		
<p>MOTOR CONNECTIONS: FOR CCW ROTATION FACING COMMUTATOR END, MAKE LEADS F1 AND A1 THE SAME POLARITY. FOR CW ROTATION FACING COMMUTATOR END, MAKE LEADS F1 AND A2 THE SAME POLARITY.</p>	<p>GENERATOR CONNECTIONS: FOR CW ROTATION FACING COMMUTATOR END, F1 POSITIVE WILL MAKE A2 POSITIVE. FOR CCW ROTATION FACING COMMUTATOR END, F1 POSITIVE WILL MAKE A1 POSITIVE.</p>	NO S.O. RETRACED - NO CHANGES
<p>FOR LOW NAMEPLATE EXCITATION VOLTAGE CONNECT SHUNT FIELD LEADS AS INDICATED</p>		
<p>MOTOR CONNECTIONS: FOR CCW ROTATION FACING COMMUTATOR END, MAKE LEADS (F1, F3) &amp; A1 THE SAME POLARITY. FOR CW ROTATION FACING COMMUTATOR END, MAKE LEADS (F1, F3) &amp; A2 THE SAME POLARITY.</p>	<p>GENERATOR CONNECTIONS: FOR CW ROTATION FACING COMMUTATOR END, (F1, F3) POSITIVE WILL MAKE A2 POSITIVE. FOR CCW ROTATION FACING COMMUTATOR END, (F1, F3) POSITIVE WILL MAKE A1 POSITIVE.</p>	61 95-01-17 DC HILL 4943(3) 4487 CAD PRINTS TO
MADE BY T BURNS 83-08-09	FILE KC13-1	GE MOTORS DEPT 36A167910JB502
ISSUED BY CAD/DC Hill 95-01-18	LOCATION ERIE	CONT ON SHEET SH NO.

FF-803-WB(3-84) PLAN REF

C5X.A.36A167910JB502R01