

Product Information Packet

November 8, 2016

Data shown is for the current revision model #. Ensure your nameplate model # matches.

Model Number:	5KS447LAA204D
Catalog Number:	M7941
Instruction Manual:	GEI-56128
Connection Diagram:	GEM2034E-FIG7
Outline Drawing:	239CC800AA

Accessory Connection Diagrams

Bearing Thermocouple:	None	Heater:	None
RTD:	None	Thermistor:	None
Thermostat:	None	Winding Thermocouple:	None
Bearing RTD:	None		

Table of Contents

Specification	01
Performance Characteristics	02
Outline Drawing	03
Connection Drawing(s)	04



Marks:

MODEL NUMBER:	5KS447LAA204D	Estimated Weight:	2590 Lbs
Outline Drawing:	239CC800AA	Time Rating:	CONT
Connection Diagram:	GEM2034E-FIG7	Enclosure:	TEFC
Instruction Book:	GEI-56128	Encl Construction:	SD
Design Code:	49BD1169B	Ambient Max(°C):	40
Type:	KS	Alt Ambient Max(°C):	--
Frame:	447T	Insulation Class:	F
Phases:	3	NEMA Design:	A
Poles:	4	Nominal Efficiency:	96.2 %
Output Power:	200HP 148KW	Guaranteed Efficiency:	95.4
RPM:	1790	3/4 Load Efficiency:	96.5
Voltage:	575	KVA Code:	H
Hertz:	60	Max KVAR:	58.7
Amps - FL:	181.0	Power Factor:	86.0
Service Factor:	1.15	Bearing - DE:	6318ZC3S0
Alt Service Factor:	--	Bearing - ODE:	6318ZC3S0

Enclosure is Totally Enclosed Fan-Cooled

Stamped Nameplate Notes:

INVERTER DUTY PER NEMA MG1 PART 31
 ALTERNATE RATING FOR PWM CONTROL:
 1.0 SF VAR TORQUE RANGE 0-60 HZ

Additional Information:

4P - T EXTN
 700 CU IN - 3.00" NPT
 OIL RESISTANT SLEEVING ON LEADS
 F1 MOUNTING
 VIBRATION LIMIT 0.15 INCH PER SEC

Performance Characteristics

1st Winding 1st Connection

Design: 49BD1169B

Marks:

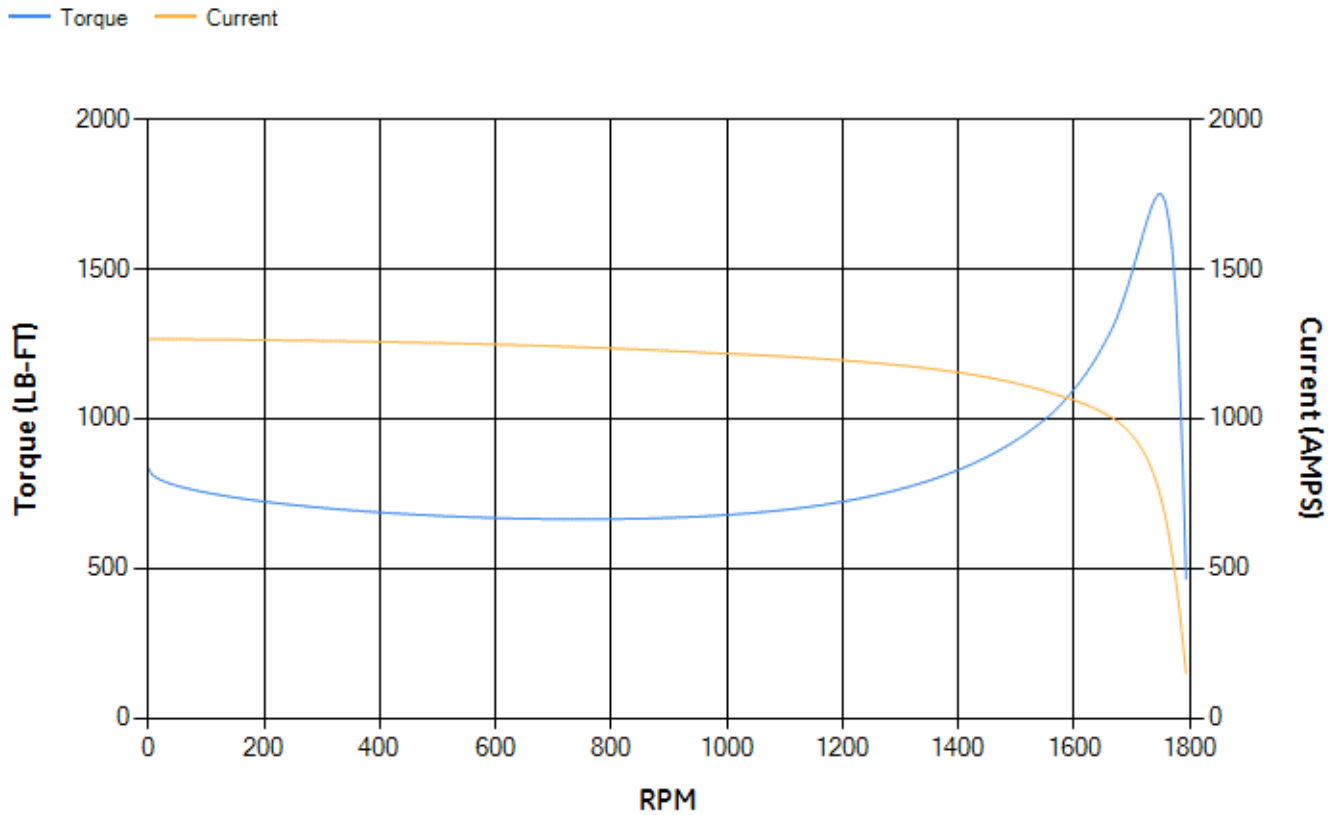
LOAD %	125.0	115.0	100.0	75.0	50.0	25.0	0.0
% EFF	95.78	95.98	96.43	96.48	96.34	94.74	0.00
% PF	87.4	86.95	85.83	82	72.93	50.41	2.61
AMPS	223.61	206.35	180.94	141.95	106.56	78.39	65.28

TORQ(FL)#FT	586.25	TORQ(LR)%FL	142	TORQ(BD)%FL	298.68
AMPS(LR)	1266.46	PF AT START	0.24		

This motor is capable of two cold or one hot start with a maximum connected load inertia of 3932 Lb-Ft Sq (165.54 Kg-meter Sq)at 100% voltage, where the load torque varies with the square of the speed. Acceleration time with maximum inertia and the above load type is 39 seconds. Safe stall time at 100% voltage is 122 seconds cold, 61 seconds hot. Rotor inertia is 89 Lb-Ft Sq (3.75 Kg-meter Sq).

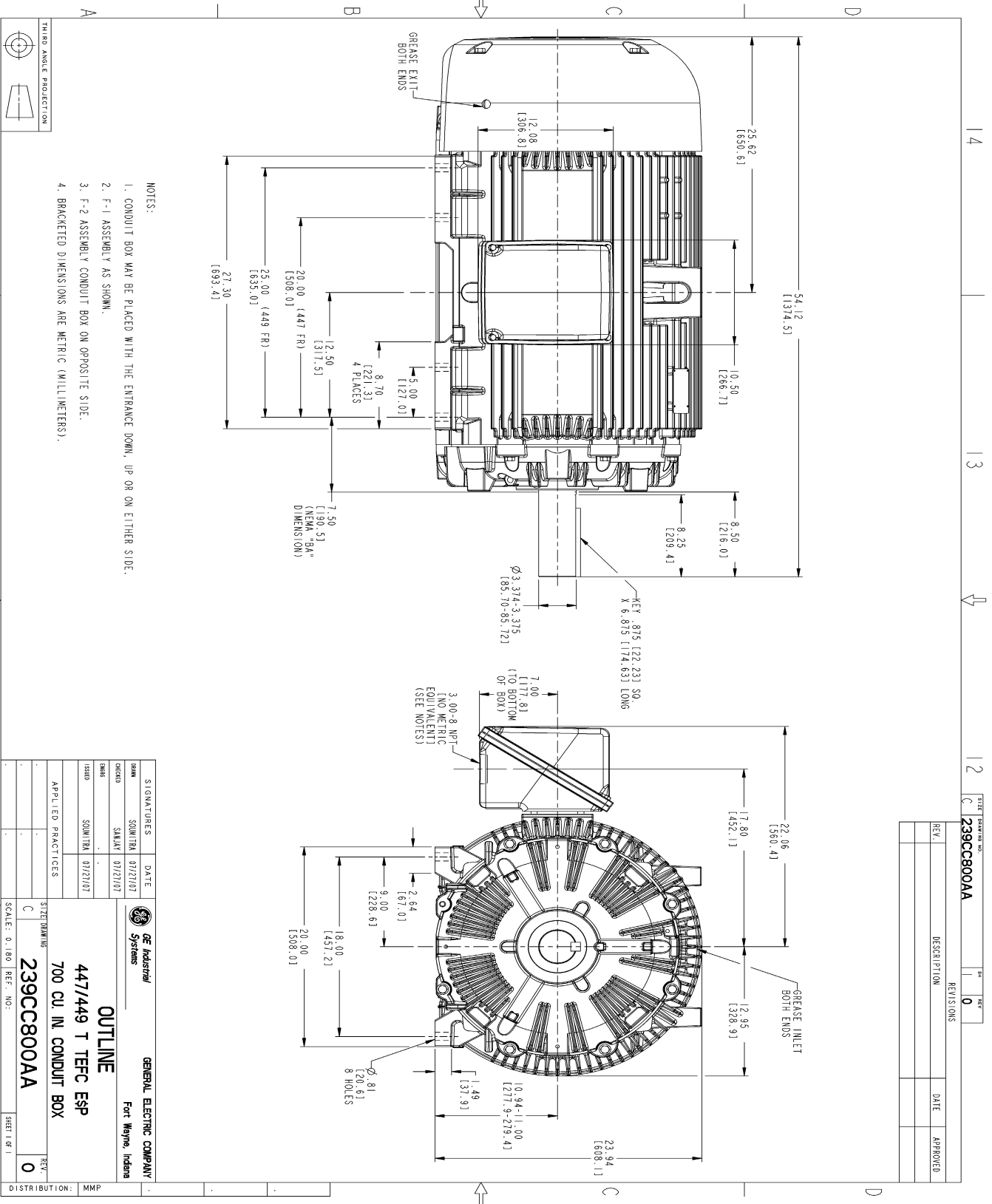
Open Circuit A-C:	1.429	Short Circuit D-C:	0.026
Short Circuit A-C:	0.066	X/R Ratio:	9.743
Stator Slots:	72	Rotor Slots:	58

Speed Torque Current Curve (First Connection, First Speed)



NAME:501352727 OBJECT:239CC800AA DATE:31-Jul-07 14:14:01

Marks:



REV.	DESCRIPTION	DATE	APPROVED

DESIGNING	DATE	GENERAL ELECTRIC COMPANY
CHECKED	01/21/07	Fort Wayne, Indiana
DRAWN	01/21/07	
ISSUED	01/21/07	
APPLIED PRACTICES		
SCALE: 0.180 REF. NO:		
SHEET NO. 1		

OUTLINE
447/449 T TEFC ESP
700 CU. IN. CONDUIT BOX
239CC800AA

DISTRIBUTION: MMP

Marks:

Connection Diagram
GEM2034E-FIG7

