

Product Information Packet

January 12, 2017

Data shown is for the current revision model #. Ensure your nameplate model # matches.

Model Number:	5KGS404SAA320D
Catalog Number:	M8984
Instruction Manual:	GEI-56128
Connection Diagram:	GEM2034E-FIG7
Outline Drawing:	239C6400AA

Accessory Connection Diagrams			
Bearing Thermocouple:	None	Heater:	None
RTD:	None	Thermistor:	None
Thermostat:	3027JE-2A	Winding Thermocouple:	None
Bearing RTD:	None		

Table of Contents

Specification	01
Performance Characteristics	02
Outline Drawing	03
Connection Drawing(s)	04
Spare parts	05



Marks:

MODEL NUMBER:	5KGS404SAA320D	Estimated Weight:	1560 Lbs
Outline Drawing:	239C6400AA	Time Rating:	CONT
Connection Diagram:	GEM2034E-FIG7	Enclosure:	TEFC
Instruction Book:	GEI-56128	Encl Construction:	X\$D
Design Code:	40BD3073A	Ambient Max(°C):	40
Type:	KGS	Alt Ambient Max(°C):	--
Frame:	404T	Insulation Class:	H
Phases:	3	NEMA Design:	C
Poles:	6	Nominal Efficiency:	94.5 %
Output Power:	60HP 44.4KW	Guaranteed Efficiency:	94.1
RPM:	1180	3/4 Load Efficiency:	94.6
Voltage:	460	KVA Code:	G
Hertz:	60	Max KVAR:	20.9
Amps - FL:	72.5	Power Factor:	82.0
Service Factor:	1.15	Bearing - DE:	NU 316
Alt Service Factor:	--	Bearing - ODE:	6316ZC3S0

Enclosure is Totally Enclosed Fan-Cooled

Stamped Nameplate Notes:

ROLLER BEARING - FOR BELTED LOAD ONLY
 THERMOSTAT LEADS TB1-TB2 TRIP
 STAMP NP249A5564P051 AS BELOW:
 MODEL:5KGS404SAA320D S/N: XXX
 CSA CERTIFIED CSA09.2216219 FOR EX NA IIC 200 C GC
 CL 1 ZONE2 AEX NA IIC 200C;CL 1 DIV2 GRP ABCD 200C
 IN -40C <= AMB <= 40C, 1.0 SF ON SINE-WAVE PWR
 SURF TEMP 200C AT 1.15SF ON SINE-WAVE PWR

OR 200C VT OR 215C CT OR -- CHP PWM CONTROL

ALTERNATE RATING FOR PWM CONTROL 1.0SF 40C AMB
 VT 0-60 HZ, CT 3-60 HZ, CHP -- HZ.

400V, 50HZ 81.8 AMPS AT 1.0SF

Additional Information:

6P - T EXTN
 C/BOX 700 CU IN - 3.00" NPT
 OIL RESISTANT SLEEVING ON LEADS
 B5F4C4 HIGH FATIGUE STEEL AISI 4142 SHAFT MATERIAL
 N.C. TRIP TSTAT LDS TO MAIN CONDUIT BOX
 F1 MOUNTING

Performance Characteristics

1st Winding 1st Connection

Design: 40BD3073A

Marks:

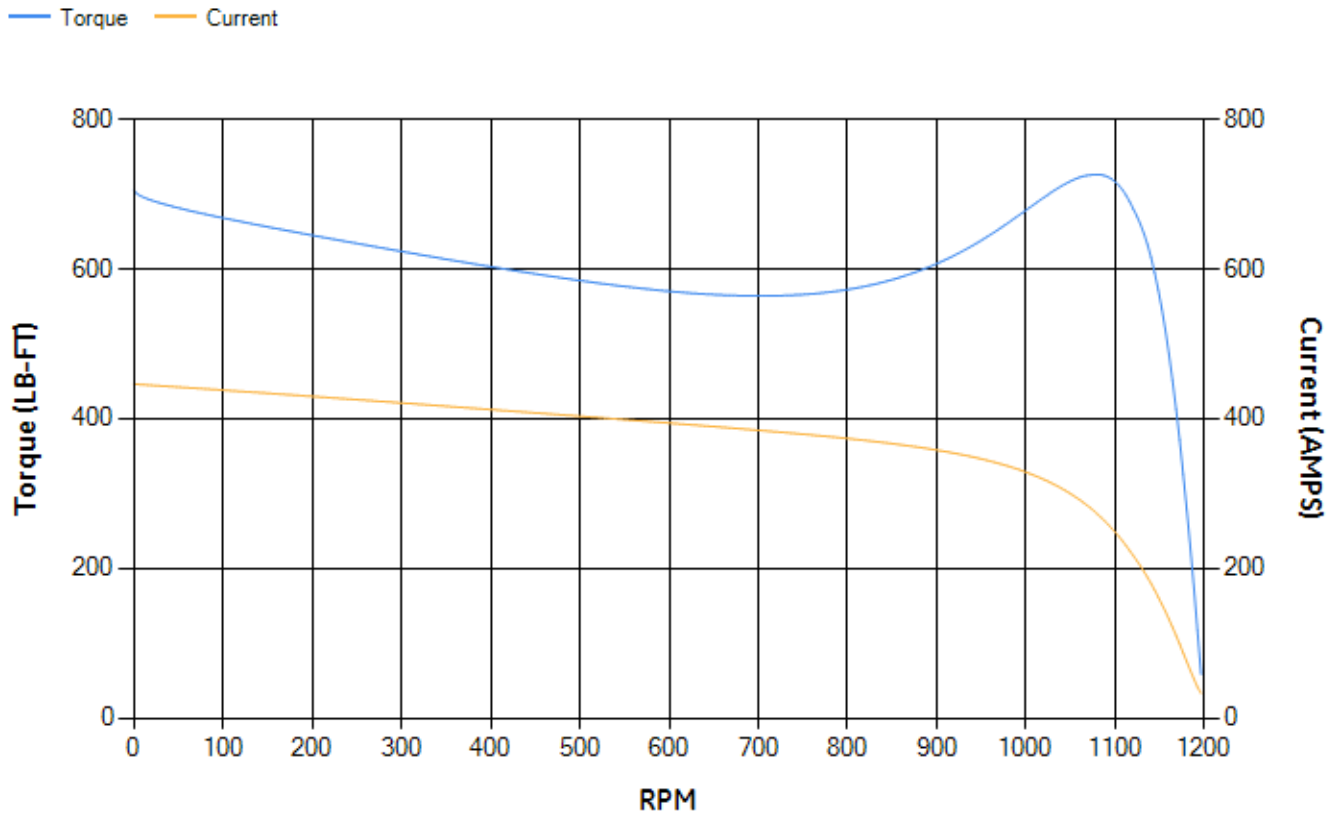
LOAD %	125.0	115.0	100.0	75.0	50.0	25.0	0.0
% EFF	93.73	94	94.53	94.6	94.2	91.38	0.00
% PF	84.19	83.6	82.18	77.54	67.37	45.04	3.75
AMPS	88.95	82.17	72.14	57.42	44.24	34.11	29.19

TORQ(FL)#FT	266.66	TORQ(LR)%FL	264.73	TORQ(BD)%FL	271.28
AMPS(LR)	446.23	PF AT START	0.45		

This motor is capable of two cold or one hot start with a maximum connected load inertia of 5059 Lb-Ft Sq (212.98 Kg-meter Sq)at 100% voltage, where the load torque varies with the square of the speed. Acceleration time with maximum inertia and the above load type is 37 seconds. Safe stall time at 100% voltage is 65 seconds cold, 45 seconds hot. Rotor inertia is 46.43 Lb-Ft Sq (1.95 Kg-meter Sq).

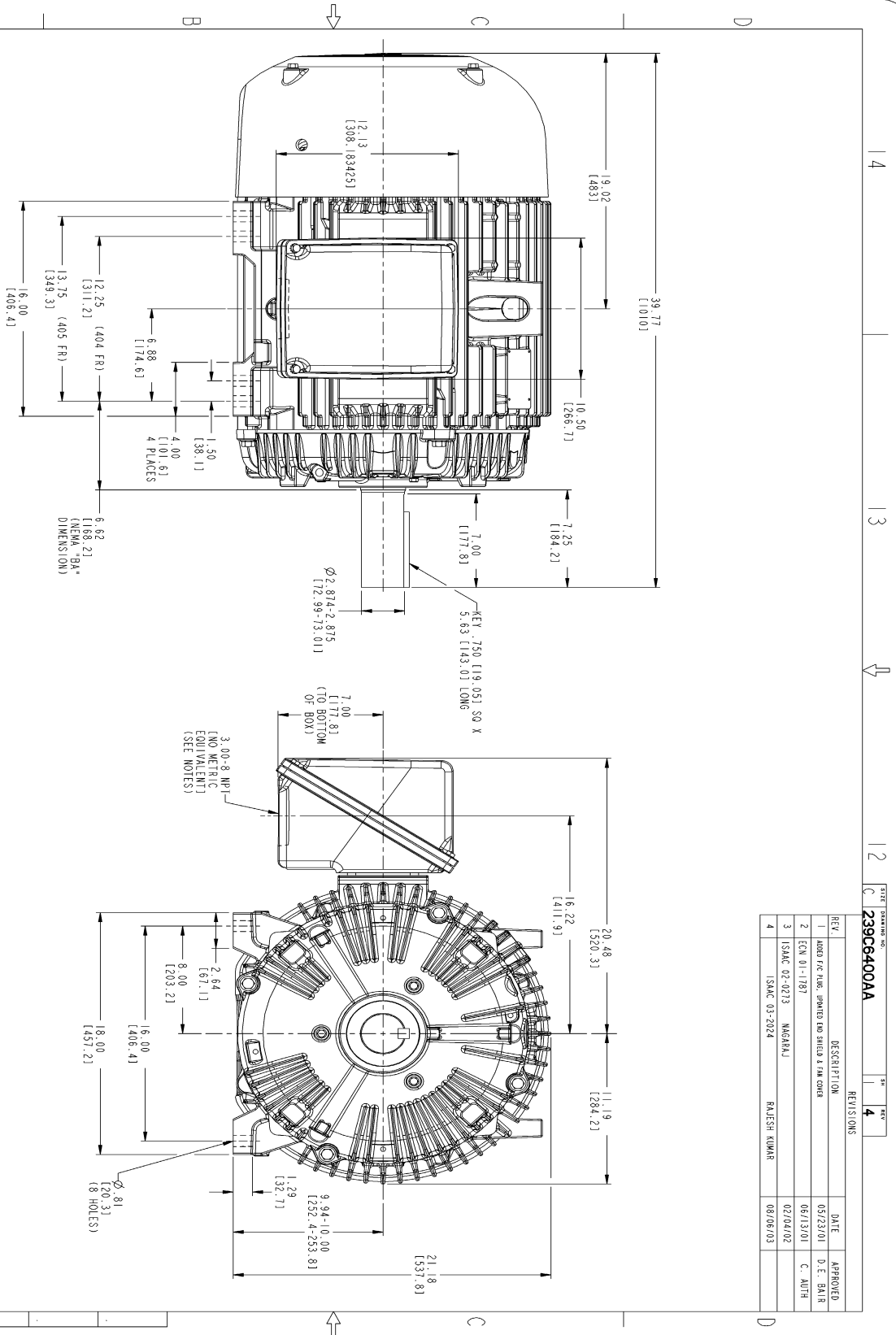
Open Circuit A-C:	0.399	Short Circuit D-C:	0.025
Short Circuit A-C:	0.021	X/R Ratio:	9.533
Stator Slots:	72	Rotor Slots:	58

Speed Torque Current Curve (First Connection, First Speed)



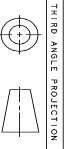
NAME: 103016807 OBJECT: 239C6400AA DATE: 08-Aug-03 09:32:41

Marks:



NOTES:

1. CONDUIT BOX MAY BE PLACED WITH THE ENTRANCE DOWN, UP OR ON EITHER SIDE.
2. F-1 ASSEMBLY AS SHOWN.
3. F-2 ASSEMBLY HAS CONDUIT BOX ON OPPOSITE SIDE.
4. BRACKETED DIMENSIONS ARE METRIC (MILLIMETERS).



SIGNATURES	DATE	DESCRIPTION	DATE	APPROVED
DESIGNER J.M. JUREN	03/29/00	DESIGNER W. ELLISWORTH	05/11/00	D.E. BAIR
CHECKER W. ELLISWORTH	05/11/00	DRAWER D. STARK	05/11/00	C. ALTH
APPLIED PRACTICES		DATE		APPROVED
SCALE: 0.220		REF. NO.:		REV. 4

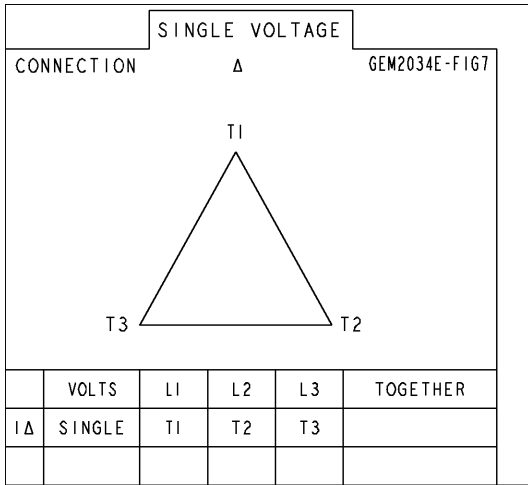
OUTLINE
404/405T TEFC
700 CU. IN. CONDUIT BOX
239C6400AA

GE Industrial Systems
GENERAL ELECTRIC COMPANY
Fort Wayne, Indiana

DISTRIBUTION: MMP

Marks:

Connection Diagram
GEM2034E-FIG7



Thermostat Connection
3027JE-2A



End shield Assembly		
Part Description	DE Side Part#	ODE Side Part#
End Shield	115E4304AA1	115E4304LK1
Bearing	235A2526AA01	235A2618AA04
Slinger/Inproseal	149C4399G06	149C4399G06

Fan & Fan Cover Assembly	
Part Description	Part#
Fan	159C7100G02
Fan Cover	128D6832AA1

Conduit & Accessories Box Assembly	
Part Description	Part#
Conduit Box	118D4408AD2

Mechanical Accessories	
Part Description	Part#
Brake	
Tachometer	