

Product Information Packet

November 7, 2016

Data shown is for the current revision model #. Ensure your nameplate model # matches.

Model Number:	5CD204SA038A260
Catalog Number:	D663
Instruction Manual:	GEH-3967N
Connection Diagram:	36A167910CB502
Outline Drawing:	36A168847AA003

Accessory Connection Diagrams			
Bearing Thermocouple:	None	Heater:	None
RTD:	None	Thermistor:	None
Thermostat:	None	Winding Thermocouple:	None
Bearing RTD:	None		

Table of Contents	
Specification	01
Outline Drawing	02
Connection Drawing(s)	03

Marks:

MODEL NUMBER:	5CD204SA038A260	Enclosure Mtg Assem:	36A167775BC001
Outline Drawing:	36A168847AA003	Instruction Book:	GEH-3967N
Connection Diagram:	36A167910CB502	RPM:	1750/2000
Horsepower:	200	Armature Amps:	318
Armature Volts:	500	Type:	CDL409AT
Wound:	SHUNT	Power Supply Code:	C
Enclosure:	DPFG-BV	Insulation Class:	F
Duty:	CONT	Ambient Max (°C):	40 C
Rating Code:	204S1360-08	Field Volts:	300/150
K(V):	2.64 Cemf volts/Radian/Sec	WK2:	44.00Lb Ft2
K(T):	1.89 Ft/Amp	Year of Manufacture:	2016
Minimum Ambient:	0 C	Max Altitude:	3300 Ft

Resistances at 25 Degrees C :

Shunt Field:	36.3 OHMS
Armature:	.0254 OHMS
Commutator Field:	.0099 OHMS

Inductances:

Armature Circuit Total:	1.150 mH Saturated
Shunt Field:	35.0 Henries Unsaturated

Shunt Field Data:

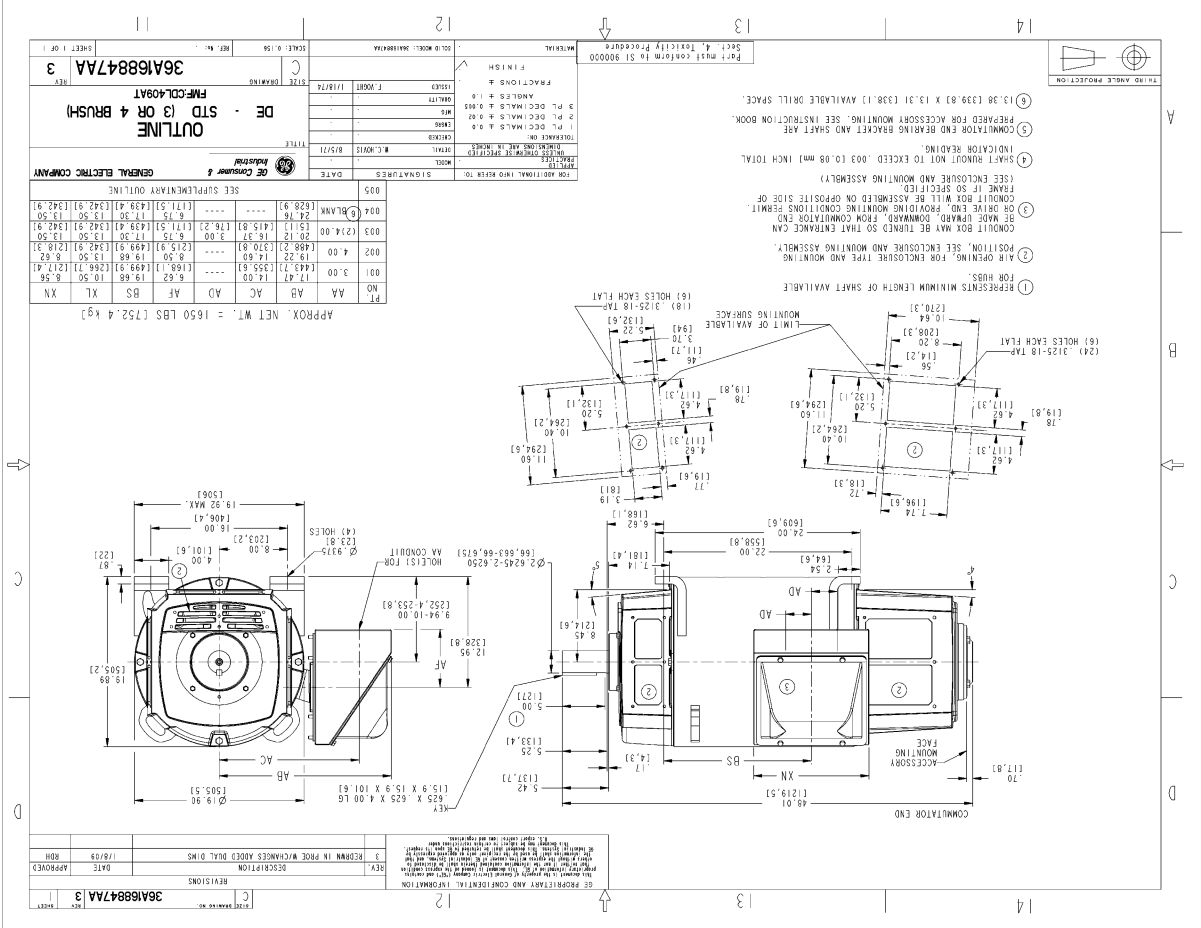
Shunt Field Current(1): 6.1 AMPS at Rated Load and 1750 RPM
 Shunt Field Current(2): 5.5 AMPS at Rated Load and 1833 RPM
 Shunt Field Current(3): 4.6 AMPS at Rated Load and 2000 RPM

Additional Machine Notes:

DRIPPROOF FULLY GUARDED, BLOWER VENTILATED - BALL BEARINGS
 CONDUIT BOX ON LEFT HAND SIDE FACING COMMUTATOR END
 STANDARD SHAFT DRIVE END ONLY - WITH FEET
 WITH:
 CSA STAMP
 THERMOSTAT- NORMALLY CLOSED, AC RATING- 600V MAX-
 .5A, 250V-1.5A, OR 125V-3A- DC RATING- 30V MAX-
 1.5A. MAXIMUM CURRENT BASED ON INDUCTIVE LOADS UP
 TO AND INCLUDING NEMA NO. 5 CONTACTOR.



Marks:



NAME:20800954 OBJ:36A168847AA DATE:2016-09-08:59:28

Marks:

