

Product Information Packet

November 9, 2016

Data shown is for the current revision model #. Ensure your nameplate model # matches.

Model Number:	5KS215STE122A
Catalog Number:	M7718
Instruction Manual:	GEI-M1031
Connection Diagram:	GEM2034E-FIG210
Outline Drawing:	358B6277AB

Accessory Connection Diagrams			
Bearing Thermocouple:	None	Heater:	None
RTD:	None	Thermistor:	None
Thermostat:	None	Winding Thermocouple:	None
Bearing RTD:	None		

Table of Contents	
Specification	01
Performance Characteristics	02
Outline Drawing	03
Connection Drawing(s)	04

Marks:

MODEL NUMBER:	5KS215STE122A	Estimated Weight:	202 Lbs
Outline Drawing:	358B6277AB	Time Rating:	CONT
Connection Diagram:	GEM2034E-FIG210	Enclosure:	TEFC
Instruction Book:	GEI-M1031	Encl Construction:	SD
Design Code:	21AD0014A	Ambient Max(°C):	40
Type:	KS	Alt Ambient Max(°C):	--
Frame:	215TC	Insulation Class:	F
Phases:	3	NEMA Design:	A
Poles:	2	Nominal Efficiency:	90.2 %
Output Power:	10HP 7.4KW	Guaranteed Efficiency:	88.5
RPM:	3505	3/4 Load Efficiency:	92.3
Voltage:	230/460	KVA Code:	J
Hertz:	60	Max KVAR:	2.3
Amps - FL:	23.6/11.8	Power Factor:	88.0
Service Factor:	1.15	Bearing - DE:	6308ZZC3
Alt Service Factor:	--	Bearing - ODE:	6208ZZC3

Enclosure is Totally Enclosed Fan-Cooled

Stamped Nameplate Notes:

USABLE AT 200V @ 10 HP,27.0 AMPS @ 1.0 SF

LRA: 181.8/90.9

50HZ DATA: 7.5HP,200/400V,23.2/11.6 AMPS @ 1.15 SF

50HZ DATA: 10 HP,200/400V,27.0/13.5 AMPS @ 1.00 SF

GREASE TYPE: SHELL ALVANIA R3 LITHIUM GREASE

Additional Information:

CONDUIT BOX MATERIAL: CAST IRON

SUITABLE FOR USE IN CLASS I DIVISION 2 LOCATIONS

CLASS I DIVISION 2 GROUPS A,B,C,D T3C

CLASS I ZONE 2 IIC T3C



Performance Characteristics

1st Winding 1st Connection

Design: 21AD0014A

Marks:

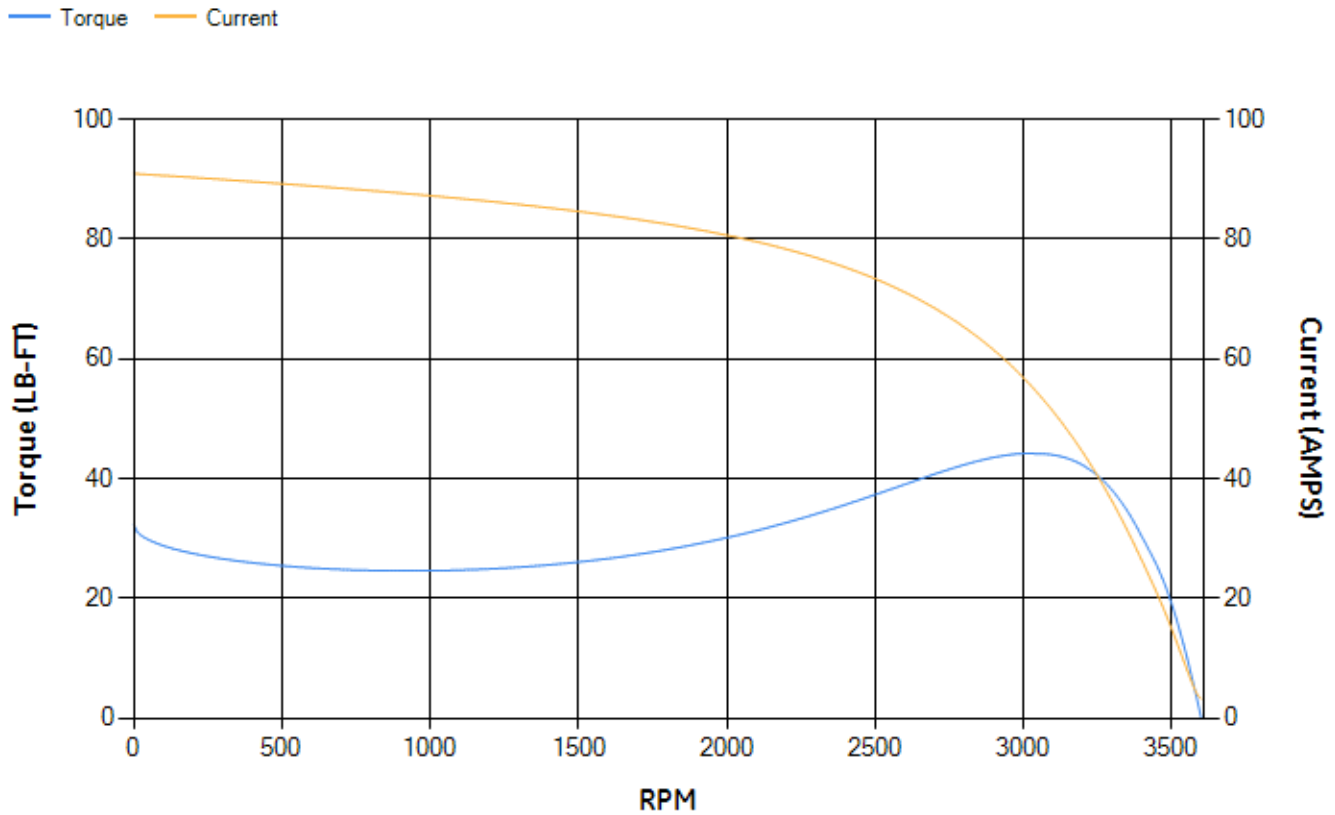
LOAD %	125.0	115.0	100.0	75.0	50.0	25.0	0.0
% EFF	89.75	90.41	91.47	92.28	92.44	89.86	0.00
% PF	88.54	88.61	88.32	86.27	80.04	60.95	6.78
AMPS	14.72	13.43	11.59	8.82	6.32	4.27	3.21

TORQ(FL)#FT	14.99	TORQ(LR)%FL	216.14	TORQ(BD)%FL	288.85
AMPS(LR)	90.93	PF AT START	0.35		

This motor is capable of two cold or one hot start with a maximum connected load inertia of 43 Lb-Ft Sq (1.81 Kg-meter Sq) at 100% voltage, where the load torque varies with the square of the speed. Acceleration time with maximum inertia and the above load type is 20 seconds. Safe stall time at 100% voltage is 34 seconds cold, 24 seconds hot. Rotor inertia is 0.49 Lb-Ft Sq (0.02 Kg-meter Sq).

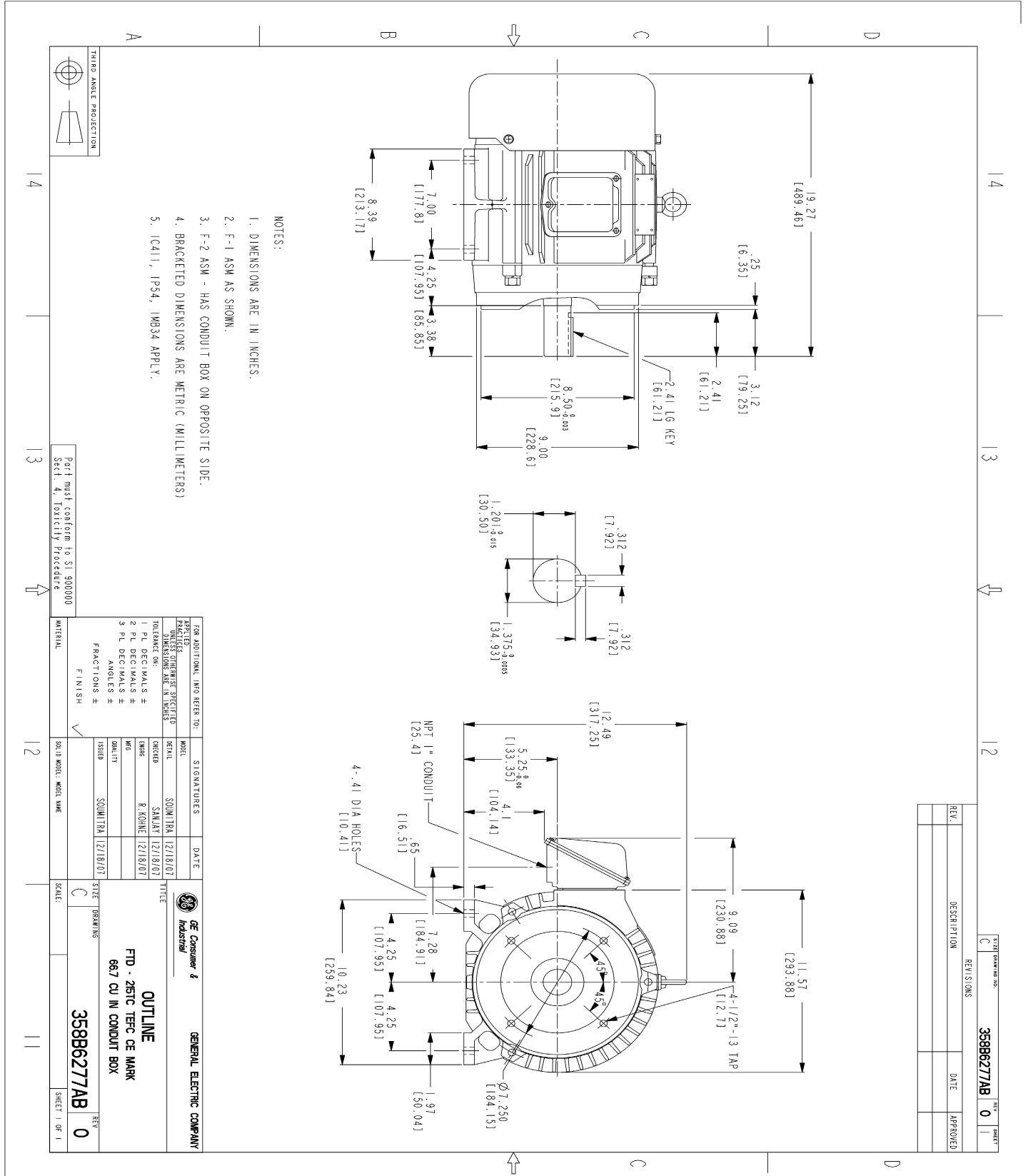
Open Circuit A-C:	0.362	Short Circuit D-C:	0.014
Short Circuit A-C:	0.012	X/R Ratio:	5.147
Stator Slots:	24	Rotor Slots:	18

Speed Torque Current Curve (First Connection, First Speed)



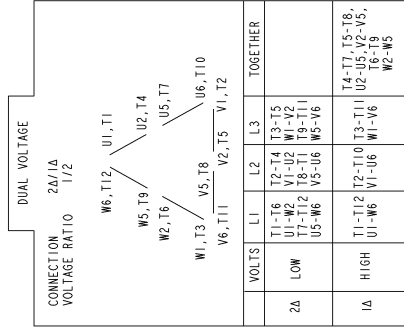
NAME:501291659 OBJECT:358B6277AB DATE:14-Jan-08 12:06:25

Marks:



Marks:

Connection Diagram
GEM2034E-FIG210



NAME:501452353 OBJECT:GEM2034E-FIG210 DATE:25-Feb-08 14:03:35