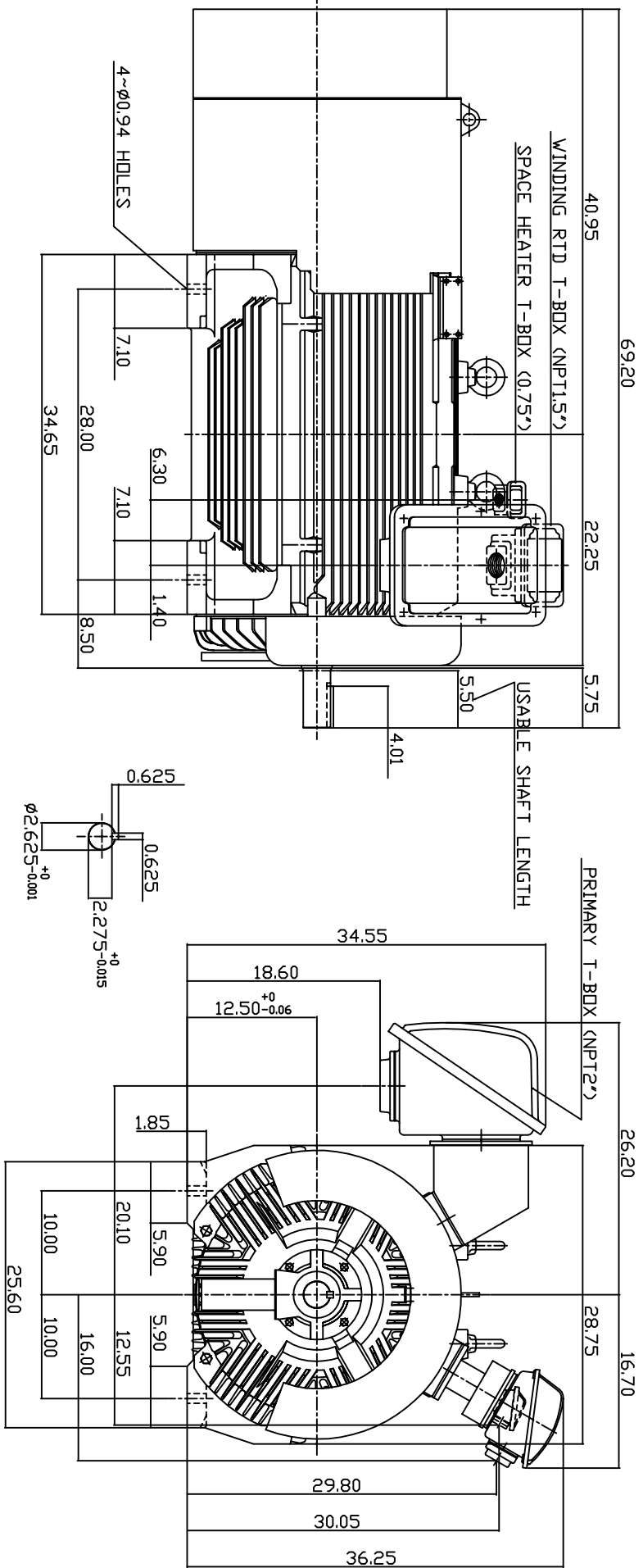


TYPE	OUTPUT		POLE	TIME RATING	VOLTAGE V	Hz	SYN SPEED R.P.M
	HP.	KW.					
AEHG1K	350	261	2	COND.	2300/4160	60	3600

TOTALLY ENCLOSED FAN-COOLED TYPE, SQUIRREL-CAGE ROTOR



NOTE:  
1. DIMENSIONS IN INCH.  
2. FRAME NO. 5009A  
3. F CLASS INSULATION, S.F.115  
4. FOR DIRECT FLEXIBLE COUPLING  
5. WITH SPACE HEATER 120 VOLT SINGLE PHASE 200 WATTS  
6. WITH 100 OHM PLATINUM WINDING RTD'S 2/PHASE  
7. BEARING SIZE: DRIVE END: 6315C3  
NON-DRIVE END: 6315C3  
8. MOTOR APPROX. WEIGHT: 3800 LBS

1. DIMENSIONS IN INCH.
2. FRAME NO. 5009A
3. F CLASS INSULATION, S.F.115
4. FOR DIRECT FLEXIBLE COUPLING
5. WITH SPACE HEATER 120 VOLT SINGLE PHASE 200 WATTS
6. WITH 100 OHM PLATINUM WINDING RTD'S 2/PHASE
7. BEARING SIZE: DRIVE END: 6315C3  
NON-DRIVE END: 6315C3
8. MOTOR APPROX. WEIGHT: 3800 LBS

TW-56C

DWN.	W.LLIN	APR-08-2003
CHKD.	W.LLIN	APR-08-2003
APPD.	C.WANG	APR-08-2003

DATE	MAY 5, 2004	OUTLINE DIMENSIONS
CATALOG NO.	KG3502	
3-PHASE INDUCTION MOTOR		DWG NO.
3A040T4461		REV: 00



3A040T4461