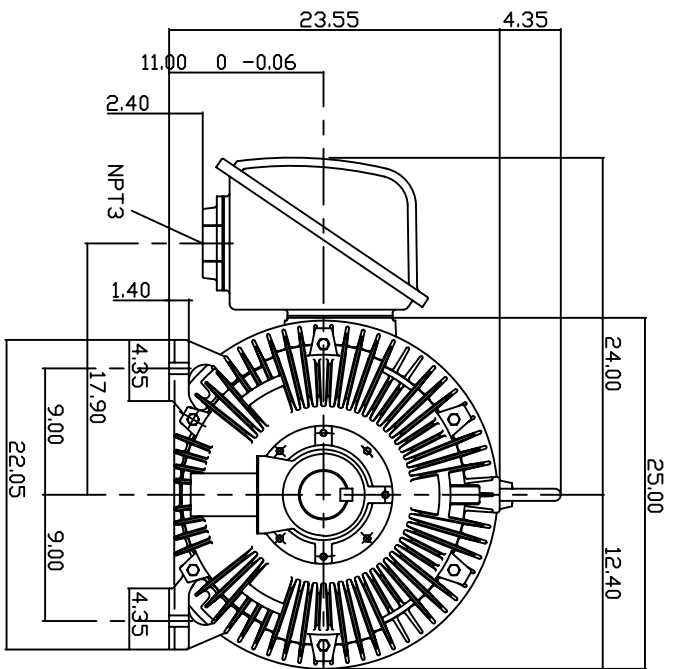
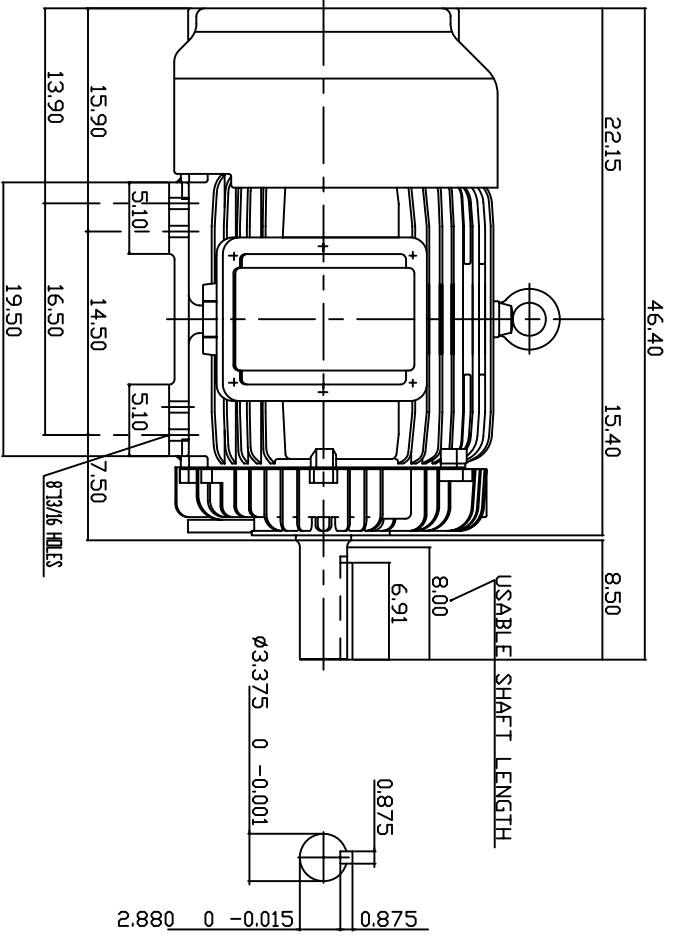


| TYPE | OUTPUT HP. | OUTPUT KW. | POLE | TIME RATING CDNT. | VOLTAGE V | Hz | SYNSPEED R.P.M |
|------|---------------|---------------|------|-------------------------|--------------|------|-------------------|
| AEHH | 150 | 111.9 | 4 | 460 | 60 | 1800 | |

TOTALLY ENCLOSED FAN-COOLED TYPE, SQUIRREL-CAGE ROTOR



NOTE:

1. DIMENSIONS IN INCH
2. FRAME NO. 445T
3. F CLASS INSULATION, S.F.115
4. FOR DIRECT FLEXIBLE COUPLING
5. ENCLOSURE: IP55
6. BEARING SIZE DRIVE END: 6318C3
NON-DRIVE END: 6316C3
7. APPROX. WEIGHT: 1850 LBS
8. NON-SPARKING FAN.
9. NOISE: BELOW 83 DBA AT 1 METER, NO LOAD.

TW-56C

| DWN. | T.H.Pan | DATE |
|-------|---------|-------------|
| CHKD. | H.HUANG | FEB 18 2005 |
| APPD. | C.WANG | FEB 18 2005 |

DATE 06-20-05
 CATALOG #HH1504
 3-PHASE INDUCTION MOTOR



DWG NO. 3A040Y698
 REV. 00

A

B

C

D

6

5

4

3

2

1