

# Product Information Packet

November 9, 2016

Data shown is for the current revision model #. Ensure your nameplate model # matches.

<b>Model Number:</b>	<b>5KS286STE204A</b>
<b>Catalog Number:</b>	<b>M7533</b>
<b>Instruction Manual:</b>	GEI-M1031
<b>Connection Diagram:</b>	GEM2034E-FIG7
<b>Outline Drawing:</b>	358B6273AC

Accessory Connection Diagrams			
<b>Bearing Thermocouple:</b>	None	<b>Heater:</b>	None
<b>RTD:</b>	None	<b>Thermistor:</b>	None
<b>Thermostat:</b>	None	<b>Winding Thermocouple:</b>	None
<b>Bearing RTD:</b>	None		

Table of Contents	
Specification	01
Performance Characteristics	02
Outline Drawing	03
Connection Drawing(s)	04

**Marks:**

<b>MODEL NUMBER:</b>	<b>5KS286STE204A</b>	<b>Estimated Weight:</b>	499 Lbs
<b>Outline Drawing:</b>	358B6273AC	<b>Time Rating:</b>	CONT
<b>Connection Diagram:</b>	GEM2034E-FIG7	<b>Enclosure:</b>	TEFC
<b>Instruction Book:</b>	GEI-M1031	<b>Encl Construction:</b>	SD
<b>Design Code:</b>	28AD1018B	<b>Ambient Max(°C):</b>	40
<b>Type:</b>	KS	<b>Alt Ambient Max(°C):</b>	--
<b>Frame:</b>	286T	<b>Insulation Class:</b>	F
<b>Phases:</b>	3	<b>NEMA Design:</b>	B
<b>Poles:</b>	4	<b>Nominal Efficiency:</b>	93.6 %
<b>Output Power:</b>	30HP 22.2KW	<b>Guaranteed Efficiency:</b>	92.4
<b>RPM:</b>	1775	<b>3/4 Load Efficiency:</b>	94.5
<b>Voltage:</b>	575	<b>KVA Code:</b>	G
<b>Hertz:</b>	60	<b>Max KVAR:</b>	8.4
<b>Amps - FL:</b>	28.7	<b>Power Factor:</b>	83.5
<b>Service Factor:</b>	1.15	<b>Bearing - DE:</b>	6310ZZ
<b>Alt Service Factor:</b>	--	<b>Bearing - ODE:</b>	6210ZZ

**Enclosure is Totally Enclosed Fan-Cooled**

---

**Stamped Nameplate Notes:****Additional Information:**

4 POLE, TEFC, LRA: 171.7 AMPS  
 SOUND POWER : 88 DBA  
 GREASE: SHELL ALVANIA R3 LITHIUM GREASE  
 NO. OF MOTOR LEADS: 3  
 CONDUIT BOX VOLUME (CU IN): 272.9  
 CONDUIT BOX MATERIAL: CAST IRON  
 SUITABLE FOR USE IN CLASS I DIVISION 2 LOCATIONS  
 CLASS I DIVISION 2 GROUPS A,B,C,D T3C  
 CLASS I ZONE 2 IIC T3C

**Performance Characteristics**

1st Winding 1st Connection

**Design: 28AD1018B**

**Marks:**

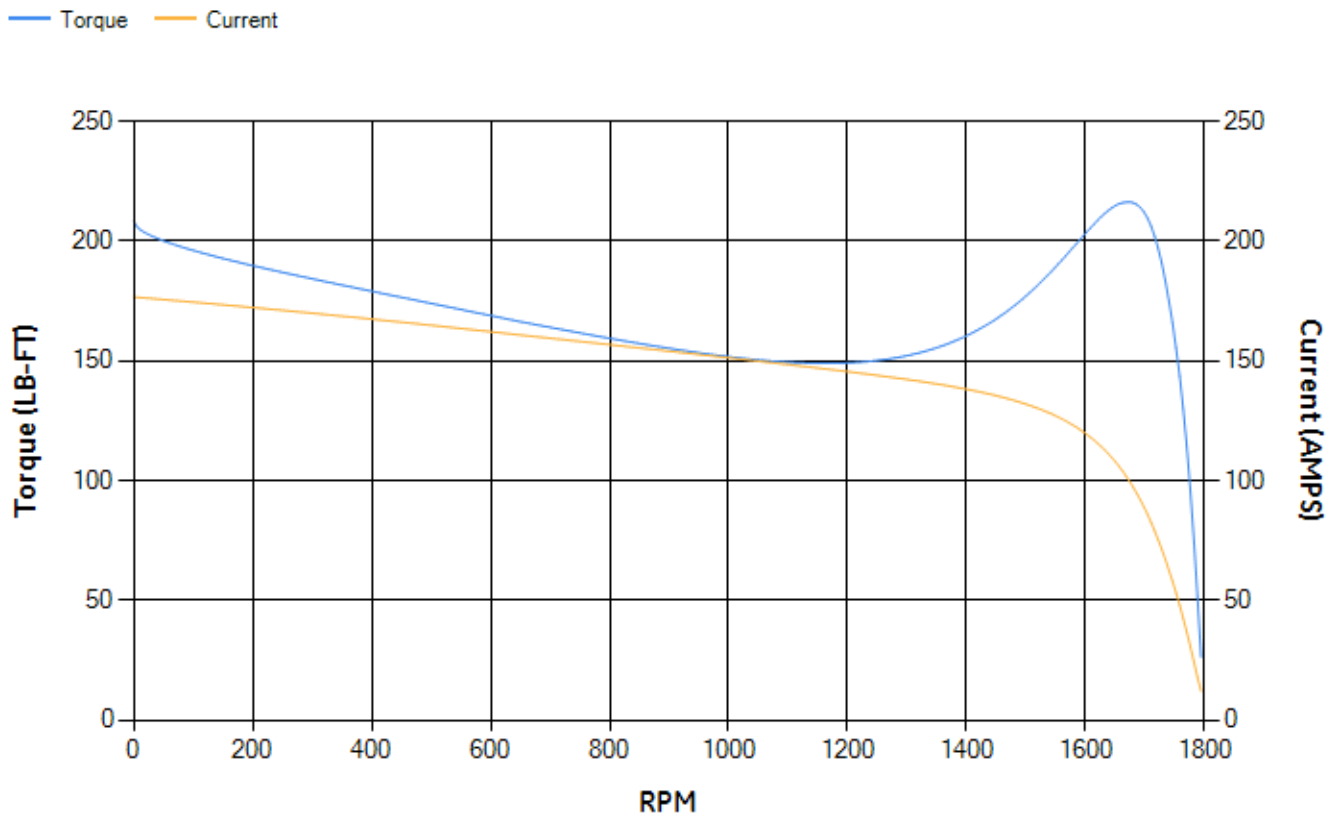
LOAD %	125.0	115.0	100.0	75.0	50.0	25.0	0.0
% EFF	93.17	93.56	94.23	94.5	94.28	91.76	0.00
% PF	84.28	84.39	84.04	81.59	74.39	54.31	4.85
AMPS	35.76	32.72	28.37	21.85	16.01	11.27	8.82

<b>TORQ(FL)#FT</b>	88.88	<b>TORQ(LR)%FL</b>	234.52	<b>TORQ(BD)%FL</b>	242.51
<b>AMPS(LR)</b>	176.63	<b>PF AT START</b>	0.39		

This motor is capable of two cold or one hot start with a maximum connected load inertia of 1000 Lb-Ft Sq (42.1 Kg-meter Sq)at 100% voltage, where the load torque varies with the square of the speed. Acceleration time with maximum inertia and the above load type is 41 seconds. Safe stall time at 100% voltage is 70 seconds cold, 49 seconds hot. Rotor inertia is 4.9 Lb-Ft Sq (0.21 Kg-meter Sq).

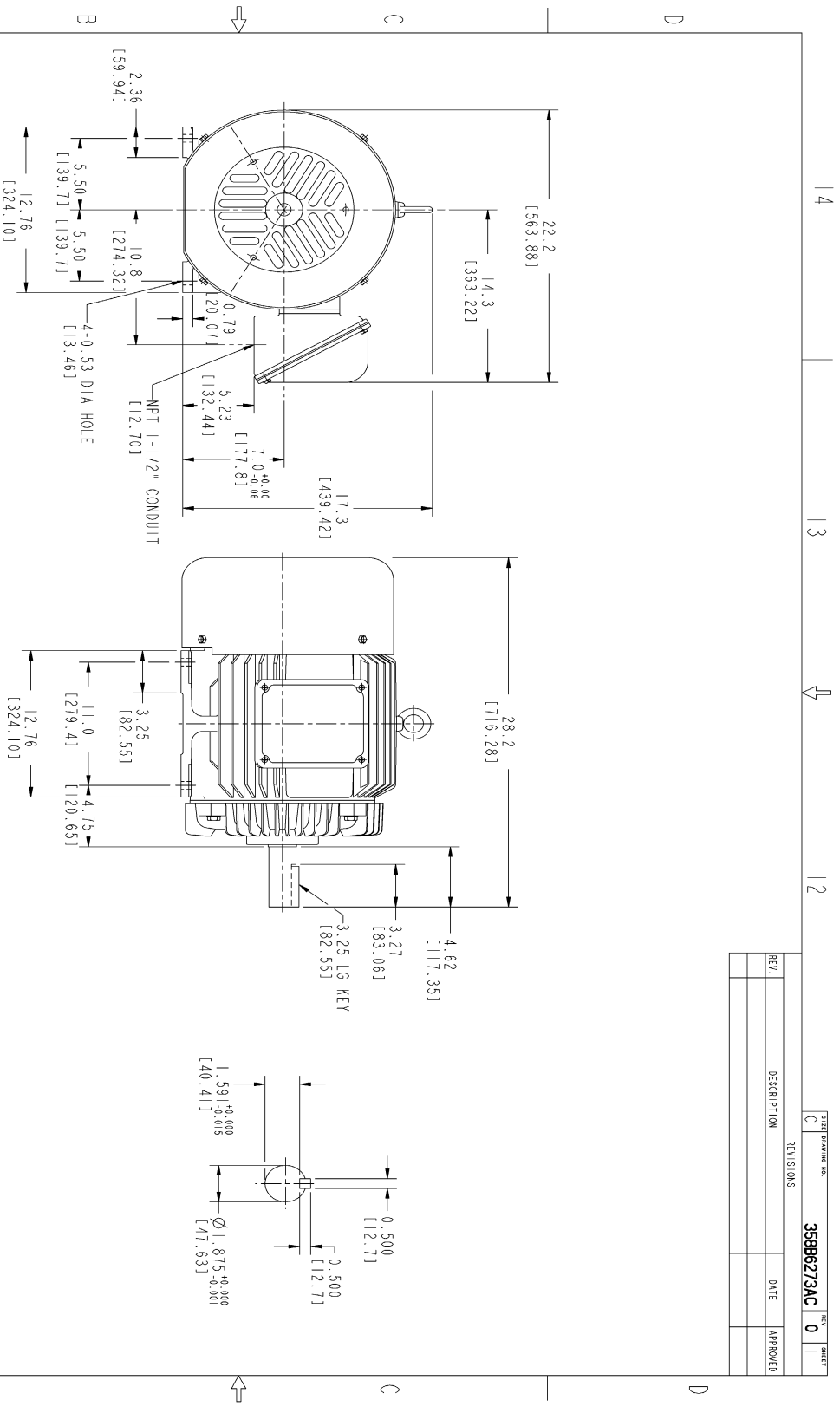
<b>Open Circuit A-C:</b>	0.554	<b>Short Circuit D-C:</b>	0.021
<b>Short Circuit A-C:</b>	0.023	<b>X/R Ratio:</b>	8.077
<b>Stator Slots:</b>	48	<b>Rotor Slots:</b>	40

**Speed Torque Current Curve (First Connection, First Speed)**



NAME:501291659 OBJECT:358B6273AC DATE:05-Dec-07 09:46:55

Marks:



NOTES :

1. DIMENSIONS ARE IN INCHES.
2. F-1 ASM AS SHOWN.
3. F-2 ASM - HAS CONDUIT BOX ON OPPOSITE SIDE.
4. BRACKETED DIMENSIONS ARE METRIC (MILLIMETERS)
5. ICA11, IP54, IMB34 APPLY

REV.	DESCRIPTION	DATE	APPROVED

358B6273AC		REV	0	SHEET	1
DESCRIPTION		DATE	APPROVED		

FOR ADDITIONAL INFO REFER TO:		SIGNATURES	DATE
APPLICABLE STANDARDS	DETAIL		
UNLESS OTHERWISE SPECIFIED	SOUGHT		
DIMENSIONS ARE IN INCHES	SMALLER		
TOLERANCES ON:			
1. FRACTIONS ±			
2. PL DECIMALS ±			
3. PL DECIMALS ±			
FRACTIONS ±			
FINISH			
MATERIAL		SOLID MODEL MODEL NAME	

GE Consumer & Industrial GENERAL ELECTRIC COMPANY

OUTLINE  
 FTD - 286T TEFC CE MARK  
 2729 CU IN CONDUIT BOX

358B6273AC  
 REV 0

THIRD ANGLE PROJECTION  
 1 4 1 3 1 2 1 1

Marks:

**Connection Diagram**  
**GEM2034E-FIG7**

