

Product Information Packet

January 12, 2017

Data shown is for the current revision model #. Ensure your nameplate model # matches.

Model Number:	5KAF184SAA202A
Catalog Number:	M9303
Instruction Manual:	GEI-56128
Connection Diagram:	GEM2034E-FIG3
Outline Drawing:	4002B5818PBP5402

Accessory Connection Diagrams			
Bearing Thermocouple:	None	Heater:	None
RTD:	None	Thermistor:	None
Thermostat:	3027JE-2	Winding Thermocouple:	None
Bearing RTD:	None		

Table of Contents	
Specification	01
Performance Characteristics	02
Outline Drawing	03
Connection Drawing(s)	04

Marks:

MODEL NUMBER:	5KAF184SAA202A	Estimated Weight:	101 Lbs
Outline Drawing:	4002B5818PBP5402	Time Rating:	CONT
Connection Diagram:	GEM2034E-FIG3	Enclosure:	TEFC
Instruction Book:	GEI-56128	Encl Construction:	A\$D
Design Code:	18BD1001A	Ambient Max(°C):	40
Type:	KAF	Alt Ambient Max(°C):	--
Frame:	184TC	Insulation Class:	H
Phases:	3	NEMA Design:	--
Poles:	4	Nominal Efficiency:	89.5 %
Output Power:	5HP 3.7KW	Guaranteed Efficiency:	87.5
RPM:	1755	3/4 Load Efficiency:	90.4
Voltage:	230/460	KVA Code:	J
Hertz:	60	Max KVAR:	2.0
Amps - FL:	13.2/6.6	Power Factor:	79.0
Service Factor:	1.00	Bearing - DE:	6307ZC3
Alt Service Factor:	--	Bearing - ODE:	6206ZC3

Enclosure is Totally Enclosed Fan-Cooled

Stamped Nameplate Notes:

THERMOSTAT LEADS PC-PC

HP RPM VOLTS HZ AMPS

5 2630 230/460 90 12.6/6.3

5 1755 230/460 60 13.2/6.6

0 0 14/28 1.5 13.2/6.6

SPEED RANGE CONST TORQUE 0 - 1755 RPM

SPEED RANGE CONST HP 1755 - 263 RPM

SF 1.0 - SINE 1.0 ASD - ASD TYPE PWM - POLES 4

Additional Information:

4P - T EXTN

C/BOX 30 CU IN-0.75 NPT

"C" FACE AT DE ENDSHIELD

BURNDY SERVIT POST ON FRAME

ODE PROVISION FOR MTG TACH WITH SHAFT COVER

SHAFT ROUND RING #235A4970AG2 MOUNTED ON DE BRG CAP

Performance Characteristics

1st Winding 1st Connection

Design: 18BD1001A

Marks:

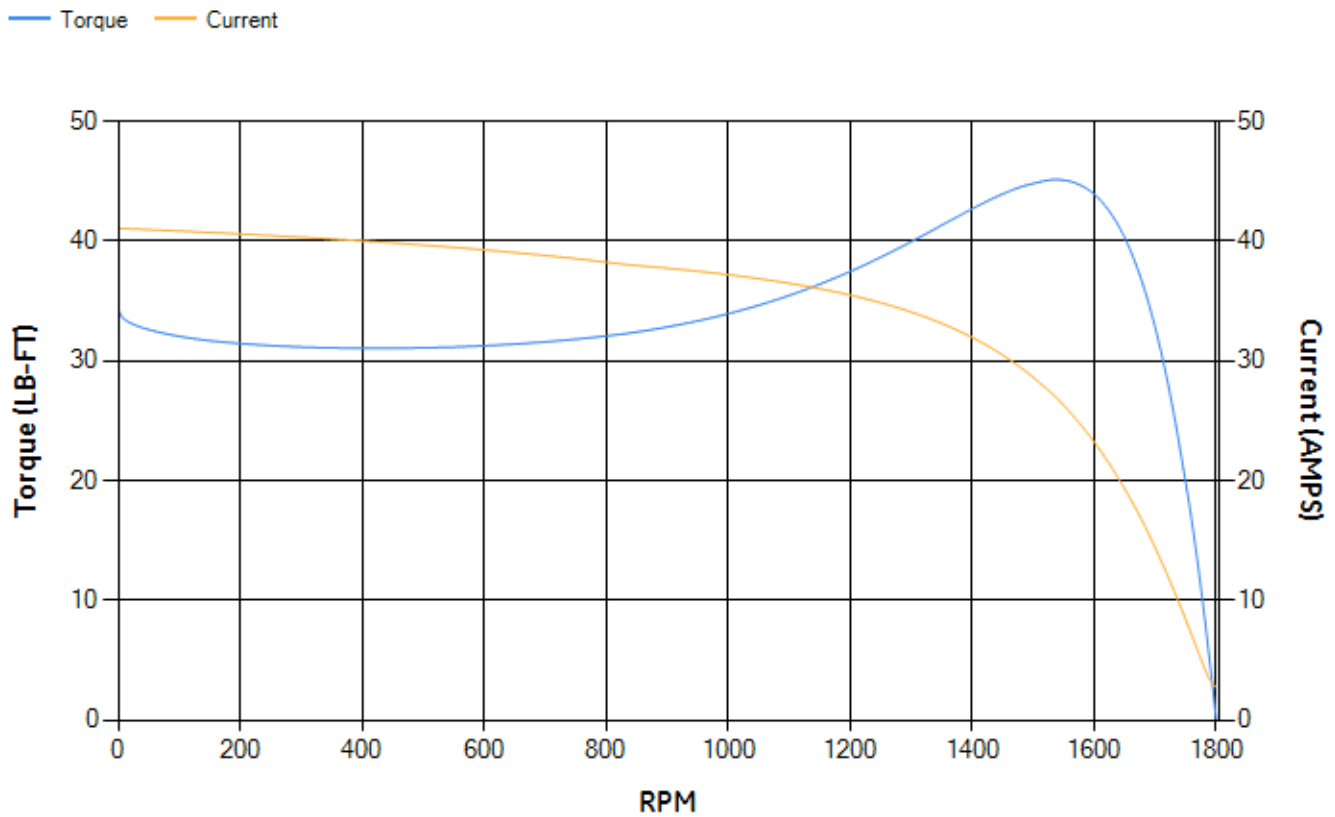
LOAD %	125.0	115.0	100.0	75.0	50.0	25.0	0.0
% EFF	88.12	88.78	89.81	90.44	90.1	85.98	0.00
% PF	81.6	80.98	80.8	74.23	63.37	41.66	5.79
AMPS	8.14	7.49	6.45	5.23	4.1	3.27	2.74

TORQ(FL)#FT	14.97	TORQ(LR)%FL	228.66	TORQ(BD)%FL	298.67
AMPS(LR)	41.06	PF AT START	0.51		

This motor is capable of two cold or one hot start with a maximum connected load inertia of 183 Lb-Ft Sq (7.7 Kg-meter Sq)at 100% voltage, where the load torque varies with the square of the speed. Acceleration time with maximum inertia and the above load type is 36 seconds. Safe stall time at 100% voltage is 79 seconds cold, 51 seconds hot. Rotor inertia is 0.35 Lb-Ft Sq (0.01 Kg-meter Sq).

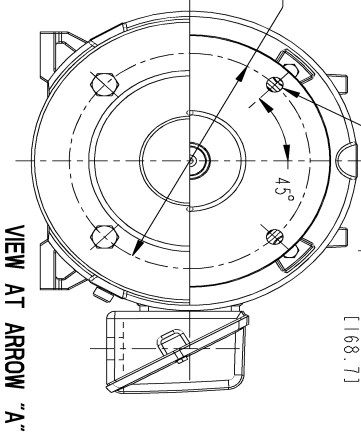
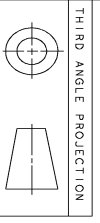
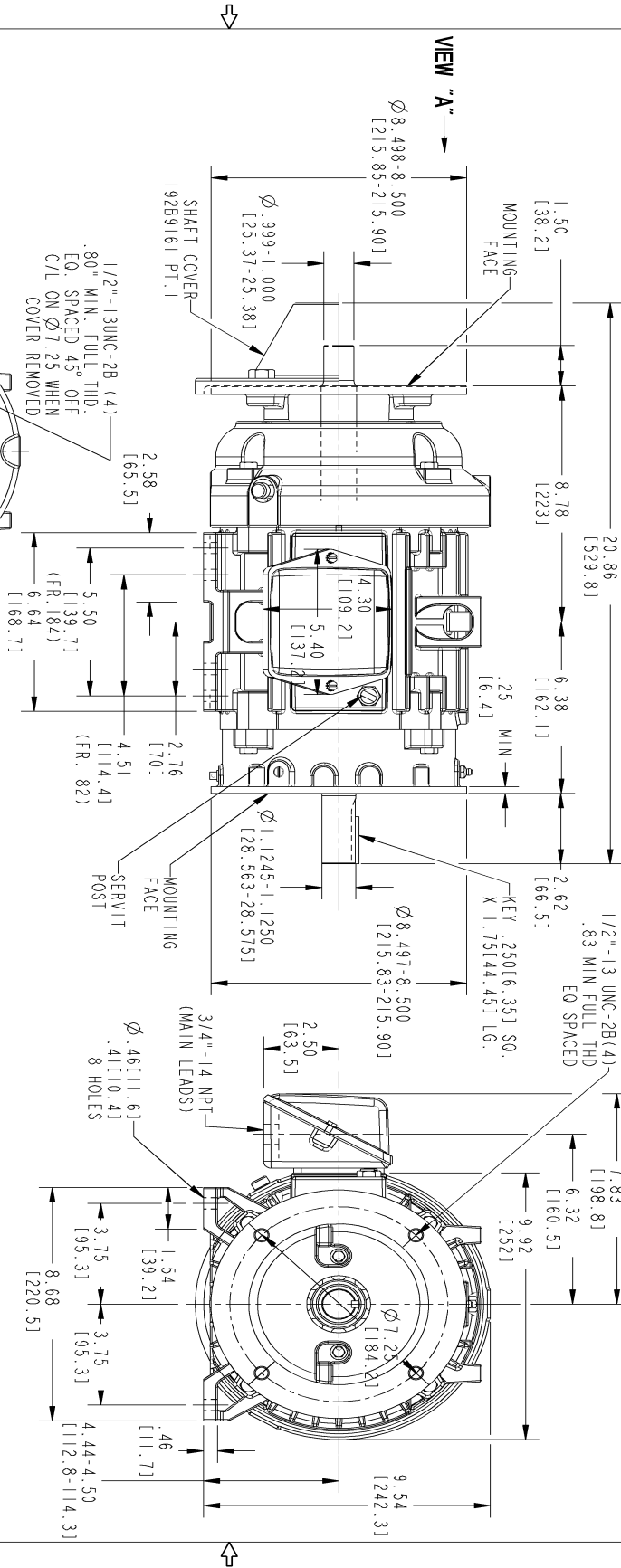
Open Circuit A-C:	0.237	Short Circuit D-C:	0.008
Short Circuit A-C:	0.012	X/R Ratio:	3.151
Stator Slots:	36	Rotor Slots:	28

Speed Torque Current Curve (First Connection, First Speed)



Marks:

- NOTE 1: CONDUIT BOX MAY BE ASSEMBLED WITH ENTRANCE UP, DOWN OR TO EITHER SIDE.
- NOTE 2: F1 ASSEMBLY AS SHOWN. F2 ASSEMBLY CONDUIT BOX ON OPPOSITE SIDE FROM SHOWN LOCATION.
- NOTE 3: MOUNTING SURFACES WILL BE SQUARE AND CONCENTRIC WITH SHAFT WITHIN .004 T. I. R.
- NOTE 4: SHAFT RUNOUT WILL NOT EXCEED .002 T. I. R.



SIZE	DRAWING NO.	REV	SHEET
B	4002B5818PBP5402	0	1

REV.	DESCRIPTION	DATE	APPROVED

SIGNATURES		DATE	
MODEL	PIYUSH IZUMI		
DETAIL	PIYUSH IZUMI		
CHECKED	MARTIN IZUMI		
ENGR			
ISSUED	PIYUSH IZUMI		
SOLD MODEL	4002B5818PBP5402		

GE Motors GENERAL ELECTRIC COMPANY

TITLE: **INDUCTION MOTOR OUTLINE**
PROVISION FOR TACH. MFG. AND SHAFT COVER
 FME: FRKAFBZ/84TC TFC, SERVOIT POST

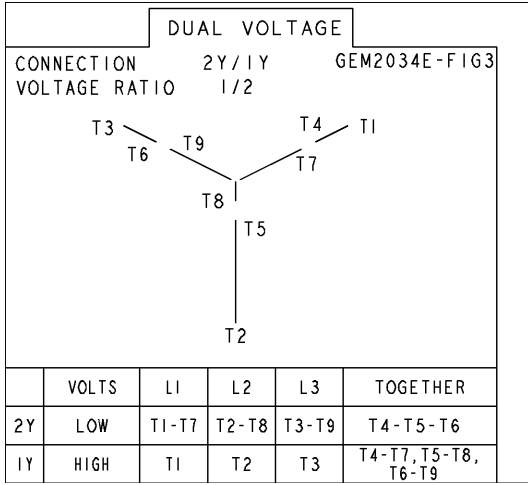
SCALE: 0.280 REF. No: 4003C5618PAP263

SIZE	DRAWING	REV
B	4002B5818PBP5402	0

SHEET 1 of 1

Marks:

Connection Diagram
GEM2034E-FIG3



Thermostat Connection
3027JE-2

FIG. 2
THERMOSTAT CONN.

