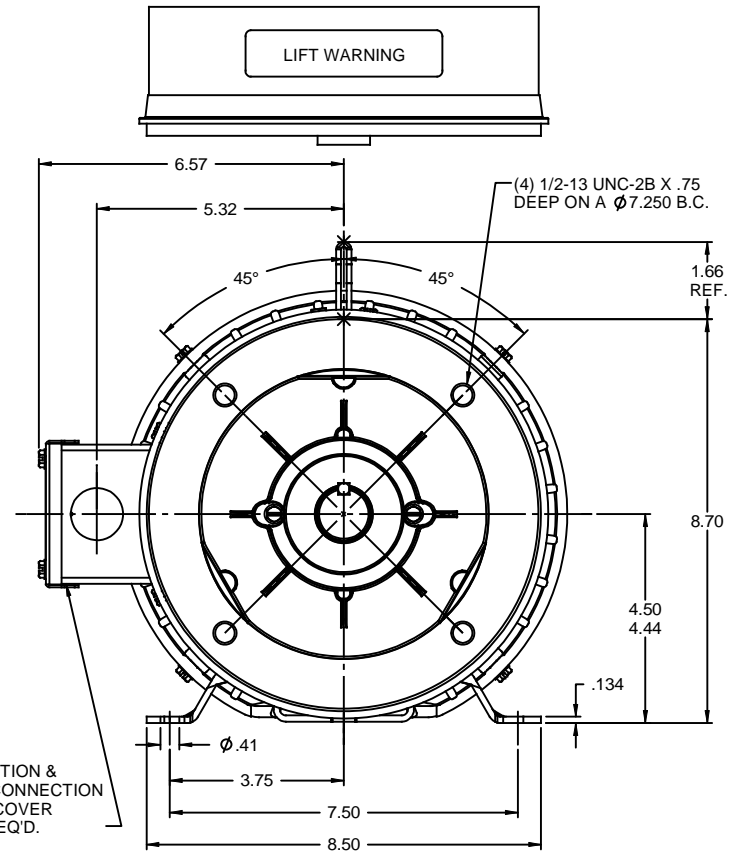
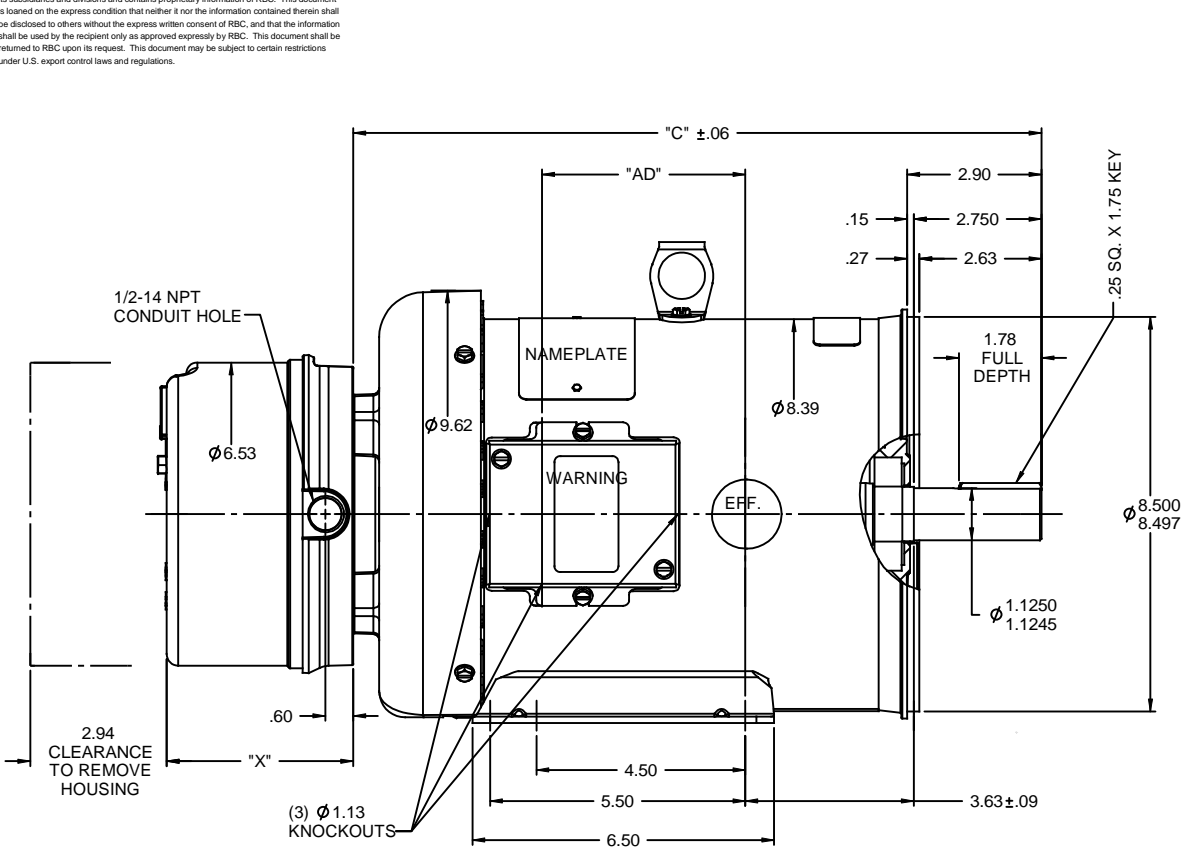
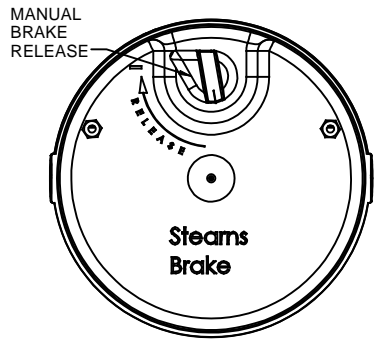


RBC PROPRIETARY AND CONFIDENTIAL INFORMATION
 This document is the property of REGAL BELOIT CORPORATION ("RBC") including its subsidiaries and divisions and contains proprietary information of RBC. This document is loaned on the express condition that neither it nor the information contained therein shall be disclosed to others without the express written consent of RBC, and that the information shall be used by the recipient only as approved expressly by RBC. This document shall be returned to RBC upon its request. This document may be subject to certain restrictions under U.S. export control laws and regulations.



DECAL-
 CONNECTION &
 BRAKE CONNECTION
 UNDER COVER
 WHEN REQ'D.



BRAKE HOUSING

BRAKE TORQUE	"X"
15 FT-LB	4.00
20 FT-LB	4.46
25 FT-LB	4.46

DASH NO.	"C"	"AD"
850	14.82	4.38
900	15.32	4.88
950	15.82	5.38
1000	16.32	5.88
1050	16.82	6.38
1100	17.32	6.88
1150	17.82	7.38

GASKETS THROUGHOUT
 MAXIMUM FACE RUNOUT TO BE .004 T.I.R.
 MAXIMUM PILOT ECCENTRICITY TO BE .004 T.I.R.
 PERMISSIBLE SHAFT RUNOUT TO BE .002 T.I.R.
 BASE & C-FACE MOUNTING TAPS TO BE SQUARE AND
 PARALLEL TO EACH OTHER ± 1/32" MAX.

REVISION		BY & DATE	CHK	ANG	FINISH	PREV	SIZE	DRAWING NO	REV
- REDRAWN IN SOLIDWORKS		LST 11/9/2009	XX	XXX	±.0005	MATL			
NO			RFP	±1/2"			B	035519	-



TOLERANCES UNLESS SPECIFIED:
 DEC INCHES
 X ±.1
 .XX ±.03
 .XXX ±.005
 XX .XXX ±.0005
 TITLE OUTLINE - 180T FRAME
 TEFC - RIGID "C"
 DRAWN LST 11/8/09
 CHK
 APPR
 SCALE 3:8
 REF
 FMF
 PAGE OF