

Product Information Packet

January 12, 2017

Data shown is for the current revision model #. Ensure your nameplate model # matches.

Model Number:	5KS511SAA188A
Catalog Number:	Q549
Instruction Manual:	GEI-56128
Connection Diagram:	GEM2034E-FIG20
Outline Drawing:	239C6B00MP

Accessory Connection Diagrams			
Bearing Thermocouple:	None	Heater:	3027JE-1C
RTD:	None	Thermistor:	None
Thermostat:	None	Winding Thermocouple:	None
Bearing RTD:	None		

Table of Contents	
Specification	01
Performance Characteristics	02
Outline Drawing	03
Connection Drawing(s)	04

Marks:

MODEL NUMBER:	5KS511SAA188A	Estimated Weight:	4985 Lbs
Outline Drawing:	239C6B00MP	Time Rating:	CONT
Connection Diagram:	GEM2034E-FIG20	Enclosure:	TEFC
Instruction Book:	GEI-56128	Encl Construction:	SD
Design Code:	50BD0174B	Ambient Max(°C):	40
Type:	KS	Alt Ambient Max(°C):	--
Frame:	5011LS	Insulation Class:	F
Phases:	3	NEMA Design:	B
Poles:	2	Nominal Efficiency:	95.8 %
Output Power:	400HP 296KW	Guaranteed Efficiency:	95.0
RPM:	3570	3/4 Load Efficiency:	95.9
Voltage:	575	KVA Code:	G
Hertz:	60	Max KVAR:	50.0
Amps - FL:	334.0	Power Factor:	93.5
Service Factor:	1.15	Bearing - DE:	6315ZC3
Alt Service Factor:	--	Bearing - ODE:	6315ZC3

Enclosure is Totally Enclosed Fan-Cooled

Stamped Nameplate Notes:

HTR LDS HE1-HE2 115V 350W
 ROT CCW FACING ODE LEAD/PH SEQUENCE 3-2-1/1-2-3
 INVERTER DUTY PER NEMA MG1 PART 31
 ALTERNATE RATING FOR PWM CONTROL:1.0SF 40C AMBIENT
 VAR TORQUE RANGE 0-60 HZ
 FOR DIRECT COUPLED LOAD ONLY

Additional Information:

2P - LS EXTN - SPLIT LEAD
 1260 CU IN - 2(4.00" NPT)
 C/B GRD PLATE
 115V HTR LDS TO AUX BOX OPP MAIN CONDUIT BOX
 SPACE HEATER CAUTION NAMEPLATE
 NEMA TYPE GRD PAD
 F1 MOUNTING
 PROVISION FOR BTD ON BOTH ENDS PLUGGED

Performance Characteristics

1st Winding 1st Connection

Design: 50BD0174B

Marks:

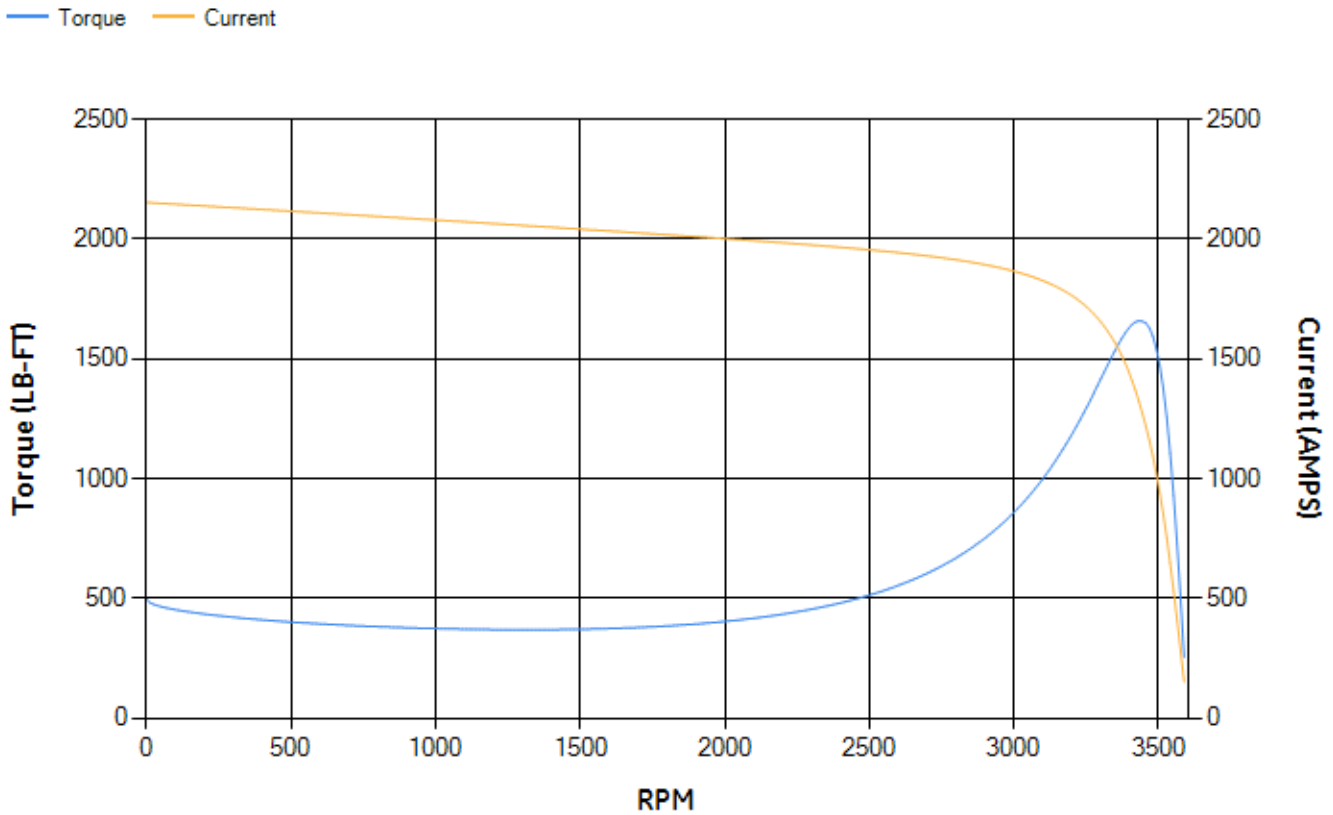
LOAD %	125.0	115.0	100.0	75.0	50.0	25.0	0.0
% EFF	95.42	95.6	96	95.94	95.56	93.26	0.00
% PF	93.32	93.55	93.72	93.29	90.83	79.67	8.18
AMPS	420.42	385.12	332.39	250.97	172.53	100.77	55.74

TORQ(FL)#FT	588.18	TORQ(LR)%FL	84.32	TORQ(BD)%FL	281.21
AMPS(LR)	2152.69	PF AT START	0.14		

This motor is capable of two cold or one hot start with a maximum connected load inertia of 997 Lb-Ft Sq (41.97 Kg-meter Sq) at 100% voltage, where the load torque varies with the square of the speed. Acceleration time with maximum inertia and the above load type is 34 seconds. Safe stall time at 100% voltage is 63 seconds cold, 40 seconds hot. Rotor inertia is 89.68 Lb-Ft Sq (3.78 Kg-meter Sq).

Open Circuit A-C:	1.952	Short Circuit D-C:	0.047
Short Circuit A-C:	0.054	X/R Ratio:	17.773
Stator Slots:	48	Rotor Slots:	40

Speed Torque Current Curve (First Connection, First Speed)



Marks:

14

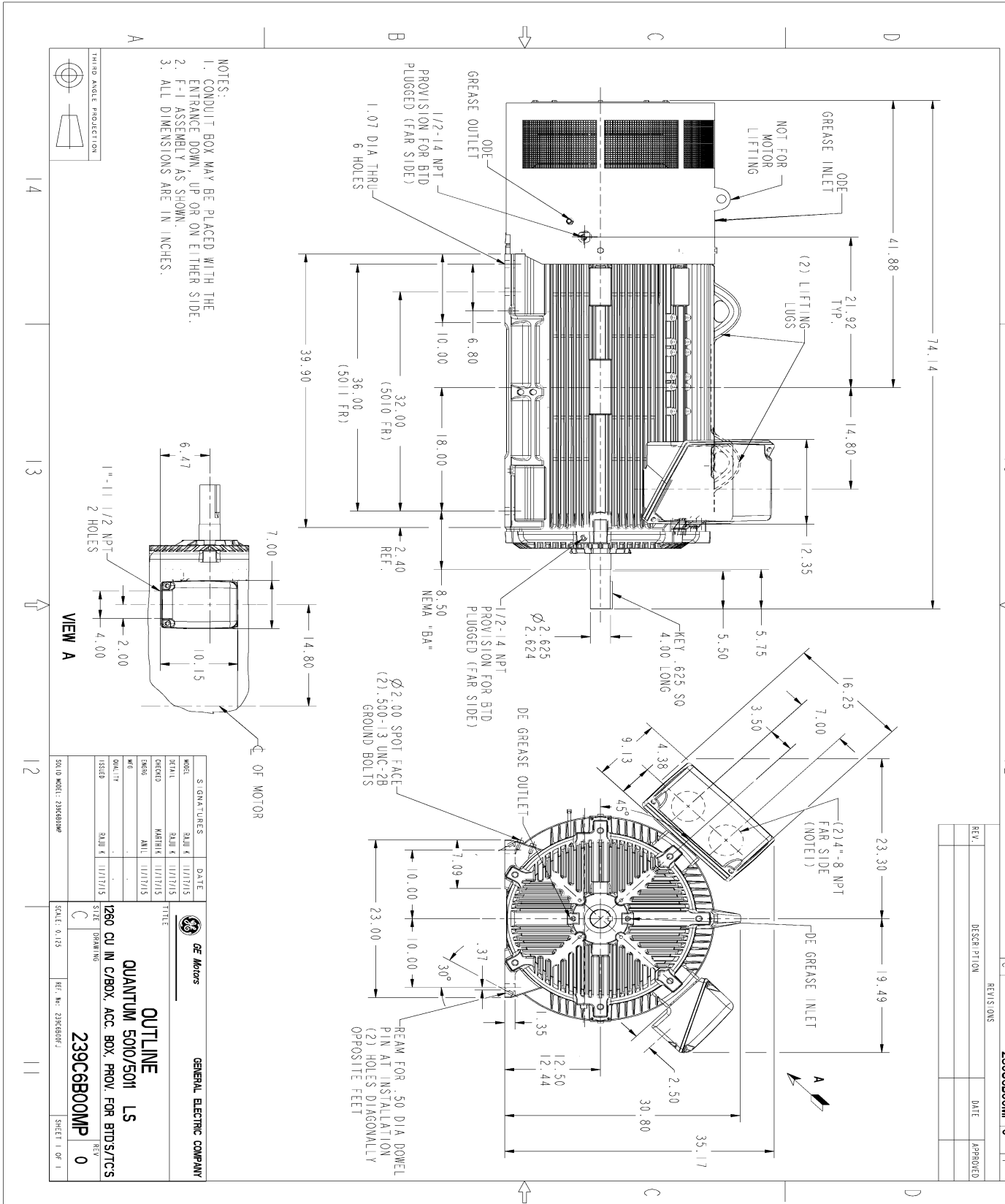
13

12

11

REV.	DESCRIPTION	DATE	APPROVED

SIZE	DRAWING NO.	REV.	SHEET
C	239C6B00MP	0	1



THIRD ANGLE PROJECTION

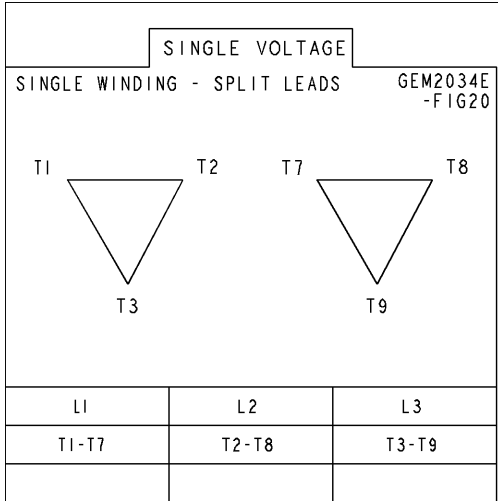


VIEW A

SIGNATURES		DATE	
MODEL	RAJIV K	11/17/15	
DRAWN	RAJIV K	11/17/15	
CHECKED	MANJIK	11/17/15	
DESIGN	ANIL	11/17/15	
DATE			
ISSUED	RAJIV K	11/17/15	
SCALE	C	SCALE: 0.125	REF. NO: 23968092
TITLE		GENERAL ELECTRIC COMPANY	
QUANTUM 5010/5011 LS			
1260 CU IN C/BOX, ACC. BOX, PROV. FOR BTDS/STCS			
DRAWING		239C6B00MP	
REV		0	
SHEET 1 OF 1			

Marks:

Connection Diagram
GEM2034E-FIG20



Heater Connection
3027JE-1C

