

# Product Information Packet

November 7, 2016

Data shown is for the current revision model #. Ensure your nameplate model # matches.

<b>Model Number:</b>	<b>5CD223NA048B024</b>
<b>Catalog Number:</b>	<b>D615</b>
<b>Instruction Manual:</b>	GEH-3967N
<b>Connection Diagram:</b>	36A167910CA502
<b>Outline Drawing:</b>	36A167939AA002

Accessory Connection Diagrams			
<b>Bearing Thermocouple:</b>	None	<b>Heater:</b>	None
<b>RTD:</b>	None	<b>Thermistor:</b>	None
<b>Thermostat:</b>	None	<b>Winding Thermocouple:</b>	None
<b>Bearing RTD:</b>	None		

Table of Contents	
Specification	01
Outline Drawing	02
Connection Drawing(s)	03

**Marks:**

<b>MODEL NUMBER:</b>	<b>5CD223NA048B024</b>	<b>Enclosure Mtg Assem:</b>	36A167775AC001
<b>Outline Drawing:</b>	36A167939AA002	<b>Instruction Book:</b>	GEH-3967N
<b>Connection Diagram:</b>	36A167910CA502	<b>RPM:</b>	850/1700
<b>Horsepower:</b>	150	<b>Armature Amps:</b>	240
<b>Armature Volts:</b>	500	<b>Type:</b>	CD506AT
<b>Wound:</b>	SHUNT	<b>Power Supply Code:</b>	C
<b>Enclosure:</b>	DPFG-SV	<b>Insulation Class:</b>	F
<b>Duty:</b>	CONT	<b>Ambient Max (°C):</b>	40 C
<b>Rating Code:</b>	223N1260-00	<b>Field Volts:</b>	300/150
<b>K(V):</b>	5.36 Cemf volts/Radian/Sec	<b>WK2:</b>	99.00Lb Ft2
<b>K(T):</b>	3.86 Ft/Amp	<b>Year of Manufacture:</b>	2016
<b>Minimum Ambient:</b>	0 C	<b>Max Altitude:</b>	3300 Ft

**Resistances at 25 Degrees C :**

<b>Shunt Field:</b>	22.1 OHMS
<b>Armature:</b>	.0531 OHMS
<b>Commutator Field:</b>	.0155 OHMS

**Inductances:**

<b>Armature Circuit Total:</b>	2.640 mH Saturated
<b>Shunt Field:</b>	30.0 Henries Unsaturated

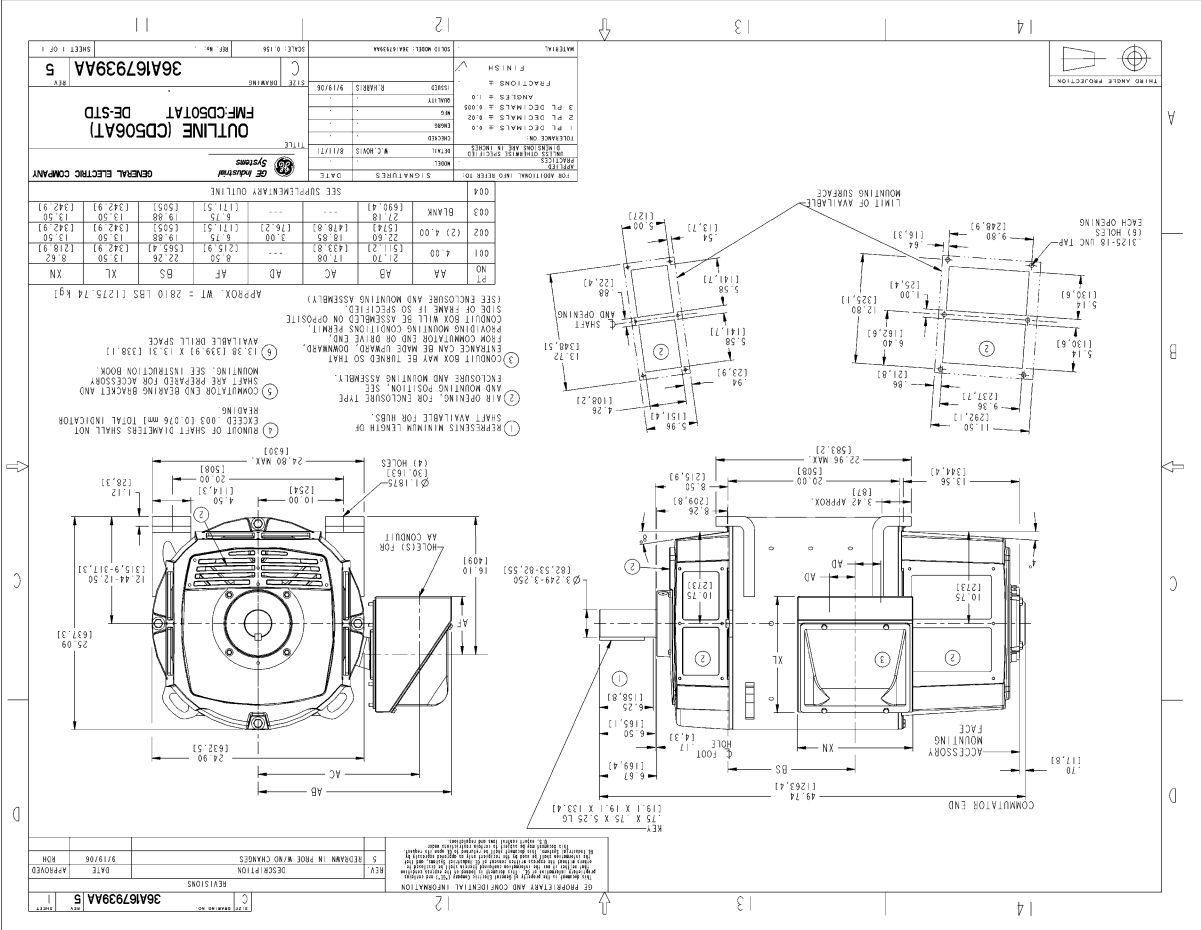
**Shunt Field Data:**

Shunt Field Current(1): 9.4 AMPS at Rated Load and 850 RPM  
 Shunt Field Current(2): 5.38 AMPS at Rated Load and 1133 RPM  
 Shunt Field Current(3): 2.9 AMPS at Rated Load and 1700 RPM

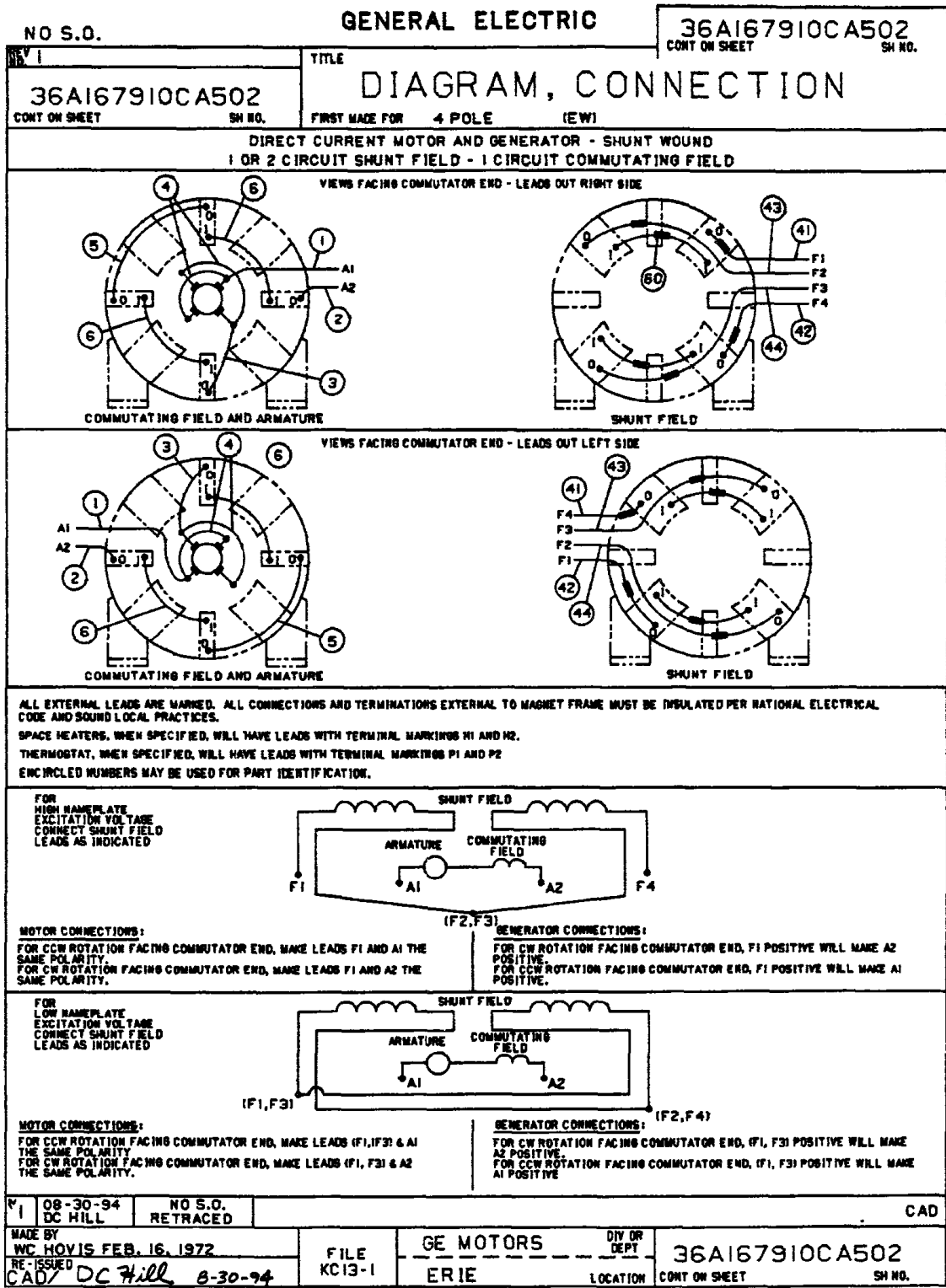
**Additional Machine Notes:**

DRIPPROOF FULLY GUARDED, SEPARATELY VENTILATED -  
 BALL BEARINGS  
 CONDUIT BOX ON RIGHT HAND SIDE FACING COMMUTATOR END  
 STANDARD SHAFT DRIVE END ONLY - WITH FEET  
 WITH:  
 CSA STAMP  
 THERMOSTAT- NORMALLY CLOSED, AC RATING- 600V MAX-  
 .5A, 250V-1.5A, OR 125V-3A- DC RATING- 30V MAX-  
 1.5A. MAXIMUM CURRENT BASED ON INDUCTIVE LOADS UP  
 TO AND INCLUDING NEMA NO. 5 CONTACTOR.

Marks:



Marks:



DC-28112-16-671

C5X.A.36A167910CA502R01

