

Product Information Packet

January 13, 2017

Data shown is for the current revision model #. Ensure your nameplate model # matches.

Model Number:	5KS215SAE5023B
Catalog Number:	V902
Instruction Manual:	GEK-95351
Connection Diagram:	GEM2034E-FIG3
Outline Drawing:	4002B5821PMP5323

Accessory Connection Diagrams			
Bearing Thermocouple:	None	Heater:	3027JE-1
RTD:	None	Thermistor:	None
Thermostat:	None	Winding Thermocouple:	None
Bearing RTD:	None		

Table of Contents	
Specification	01
Performance Characteristics	02
Outline Drawing	03
Connection Drawing(s)	04



Marks:

MODEL NUMBER:	5KS215SAE5023B	Estimated Weight:	220 Lbs
Outline Drawing:	4002B5821PMP5323	Time Rating:	CONT
Connection Diagram:	GEM2034E-FIG3	Enclosure:	TEFC
Instruction Book:	GEK-95351	Encl Construction:	SD
Design Code:	21BD0121A	Ambient Max(°C):	40
Type:	KS	Alt Ambient Max(°C):	65
Frame:	L215TP10	Insulation Class:	H
Phases:	3	NEMA Design:	B
Poles:	2	Nominal Efficiency:	90.2 %
Output Power:	10HP 7.4KW	Guaranteed Efficiency:	88.5
RPM:	3520	3/4 Load Efficiency:	91.0
Voltage:	230/460	KVA Code:	H
Hertz:	60	Max KVAR:	2.2
Amps - FL:	23.0/11.5	Power Factor:	90.0
Service Factor:	1.15	Bearing - DE:	7308
Alt Service Factor:	1.00	Bearing - ODE:	6208-2ZC3

Enclosure is Totally Enclosed Fan-Cooled

Stamped Nameplate Notes:

PREMIUM EFFICIENT MOTOR
 ROT CCW FACING ODE LEAD/PH SEQUENCE 1-2-3/1-2-3
 HTR LDS H 115V 60W
 SEVERE DUTY
 INVERTER DUTY PER NEMA MG1 PART 31
 ALTERNATE RATING FOR PWM CONTROL:
 1.0 SF VAR TORQUE RANGE 10-60 HZ
 50HZ DATA:7.5 HP 190/380 V WITH FLA-21.0/10.5 A

Additional Information:

2P - TP EXTN
 C/BOX 55 CU IN-1.00 NPT
 HEATER LEADS EXIT WITH MOTOR LEADS
 E/SHLD GROUND STUD MTD ON DE C/BOX SIDE
 RCF 5000 CPM, STATIC DEFLECTION .0014 INCHES &
 CENTER OF GRAVITY 8.59 INCHES
 HOLLOW SHAFT HIGH THRUST
 LEADS NUMBERED 1,2,3 - CCW ROTN FROM ODE
 OIL RESISTANT SLEEVING ON LEADS
 BEARING LIFE 8760 HOURS AT 1658 LB THRUST
 COUPLING NOT INCLUDED IN BOM, WILL BE
 ORDERED SEPERATELY

Performance Characteristics

1st Winding 1st Connection

Design: 21BD0121A

Marks:

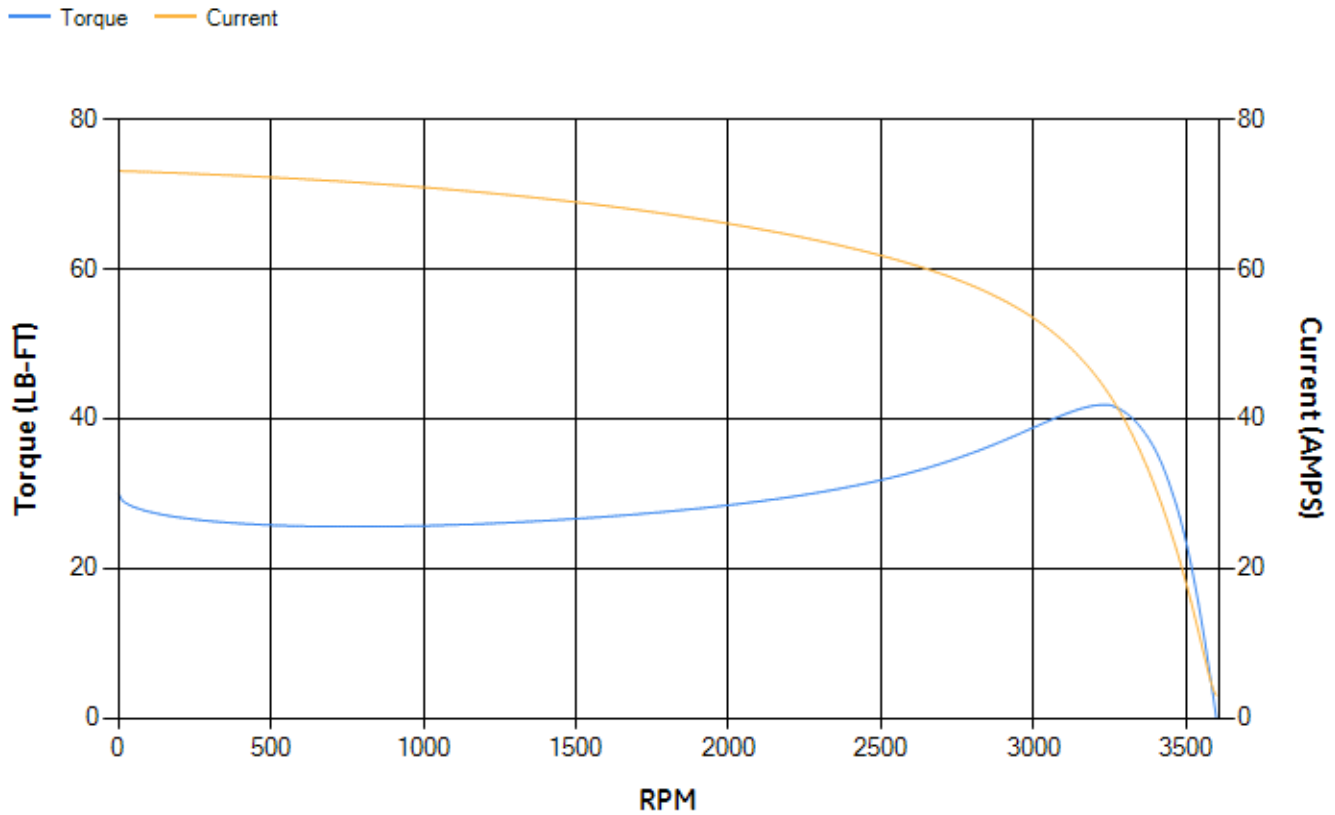
LOAD %	125.0	115.0	100.0	75.0	50.0	25.0	0.0
% EFF	88.61	89.27	90.32	91.04	90.92	87.4	0.00
% PF	90.02	90.09	89.84	88.02	82.4	64.49	9.22
AMPS	14.67	13.38	11.52	8.76	6.25	4.15	3.01

TORQ(FL)#FT	14.91	TORQ(LR)%FL	201.12	TORQ(BD)%FL	278.54
AMPS(LR)	73.1	PF AT START	0.36		

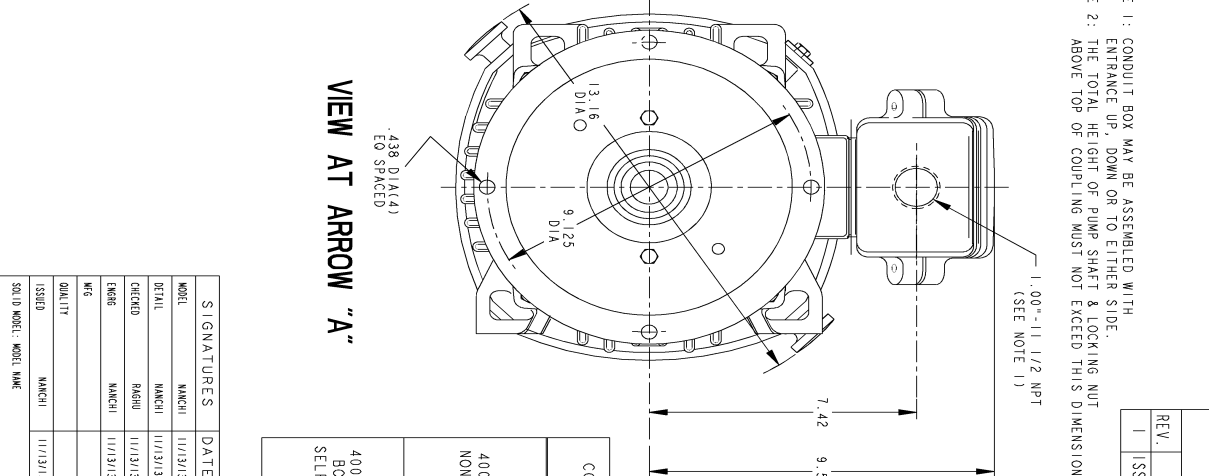
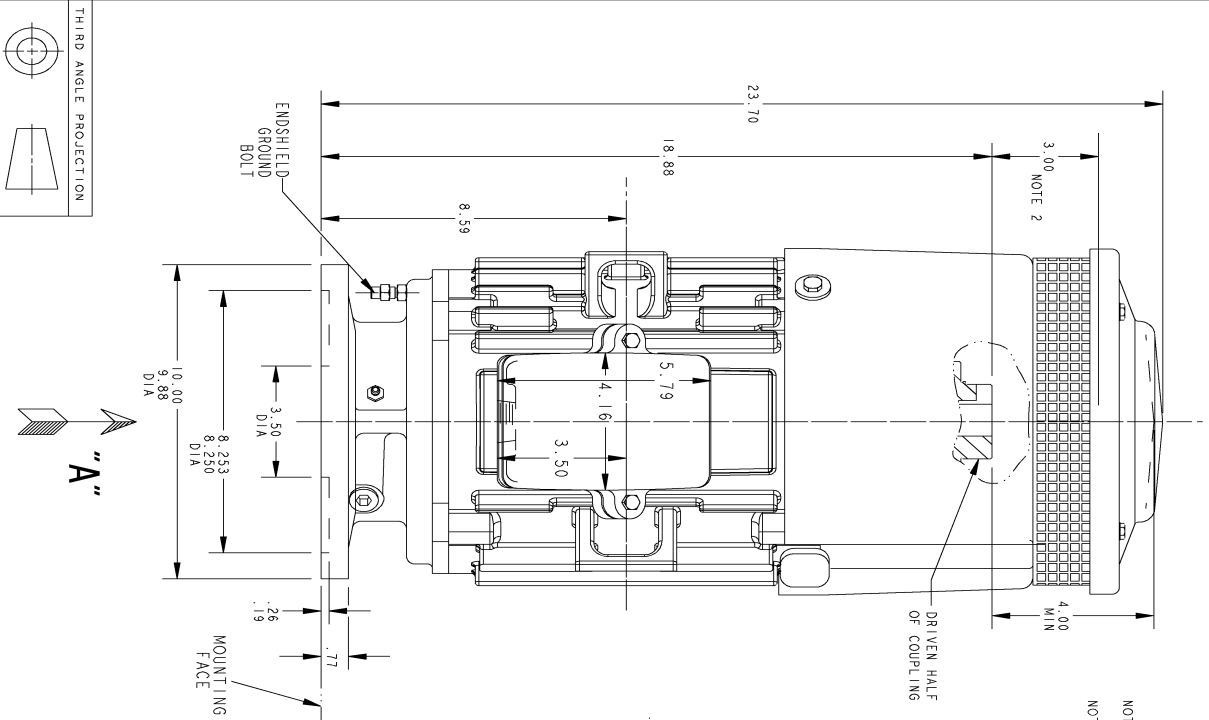
This motor is capable of two cold or one hot start with a maximum connected load inertia of 75 Lb-Ft Sq (3.16 Kg-meter Sq) at 100% voltage, where the load torque varies with the square of the speed. Acceleration time with maximum inertia and the above load type is 35 seconds. Safe stall time at 100% voltage is 67 seconds cold, 42 seconds hot. Rotor inertia is 0.39 Lb-Ft Sq (0.02 Kg-meter Sq).

Open Circuit A-C:	0.47	Short Circuit D-C:	0.01
Short Circuit A-C:	0.017	X/R Ratio:	3.896
Stator Slots:	36	Rotor Slots:	26

Speed Torque Current Curve (First Connection, First Speed)



Marks:



REV.	DESCRIPTION	DATE	APPROVED
1	ISSAC #14-0928	11/14/14	VJAY

REV.	DESCRIPTION	DATE	APPROVED
1	ISSAC #14-0928	11/14/14	VJAY

COUPLING KIT	POLES	BORE DIA. "BX"	KEYWAY "W"	"D"
4002B5521AC	4	1.002	.250	.125
NON-REVERSE	2	.939	.250	.125
	3	.877	.188	.094
	4	.752	.188	.094
	6	1.002	.250	.125
	7	.938	.250	.125
	8	.877	.188	.094
	9	.752	.188	.094

POLES	BORE DIA. "BX"	KEYWAY "W"	"D"
4	1.002	.250	.125
2	.939	.250	.125
3	.877	.188	.094
4	.752	.188	.094
6	1.002	.250	.125
7	.938	.250	.125
8	.877	.188	.094
9	.752	.188	.094

REVISIONS

DRIVEN HALF OF COUPLING

#10-32 (4) TAPPED HOLES EQ. SPACED

1.375 DIA

1.00"-11 1/2 NPT (SEE NOTE 1)

4002B5521AD BOLTED OR SELF-RELEASE

4002B5521AC NON-REVERSE

4002B5521AD KIT

GE Motors GENERAL ELECTRIC COMPANY

INDUCTION MOTOR OUTLINE

HOLLOW SHAFT-HIGH THRUST (BD-10) EKT ON DE SIDE

FME: FR210 TFC "P" BASE VERTICAL

4002B5521PMP5323

SCALE: DRAWING SCALE

SHEET 1 OF 1

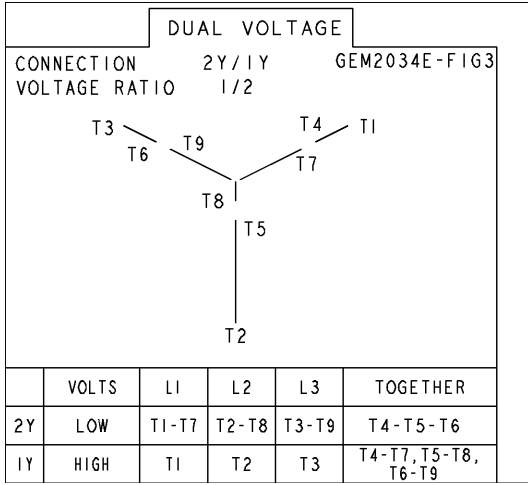
SIZE DRAWING NO. B 4002B5521PMP5323

REV SHEET 1

REV SHEET 1

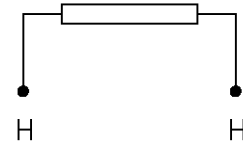
Marks:

Connection Diagram
GEM2034E-FIG3



Heater Connection
3027JE-1

FIG. 1
HEATER CONN.



CONTROL	L1	L2
VOLTAGE ONLY	H	H