

Product Information Packet

November 9, 2016

Data shown is for the current revision model #. Ensure your nameplate model # matches.

Model Number:	5KS286STE105A
Catalog Number:	M7750
Instruction Manual:	GEI-M1031
Connection Diagram:	GEM2034E-FIG210
Outline Drawing:	358B6273AC

Accessory Connection Diagrams			
Bearing Thermocouple:	None	Heater:	None
RTD:	None	Thermistor:	None
Thermostat:	None	Winding Thermocouple:	None
Bearing RTD:	None		

Table of Contents	
Specification	01
Performance Characteristics	02
Outline Drawing	03
Connection Drawing(s)	04



Marks:

MODEL NUMBER:	5KS286STE105A	Estimated Weight:	518 Lbs
Outline Drawing:	358B6273AC	Time Rating:	CONT
Connection Diagram:	GEM2034E-FIG210	Enclosure:	TEFC
Instruction Book:	GEI-M1031	Encl Construction:	SD
Design Code:	28AD0012A	Ambient Max(°C):	40
Type:	KS	Alt Ambient Max(°C):	--
Frame:	286T	Insulation Class:	F
Phases:	3	NEMA Design:	B
Poles:	2	Nominal Efficiency:	91.7 %
Output Power:	30HP 22.2KW	Guaranteed Efficiency:	90.2
RPM:	3545	3/4 Load Efficiency:	93.2
Voltage:	230/460	KVA Code:	G
Hertz:	60	Max KVAR:	4.9
Amps - FL:	67.2/33.6	Power Factor:	91.0
Service Factor:	1.15	Bearing - DE:	6310ZZC3
Alt Service Factor:	--	Bearing - ODE:	6210ZZC3

Enclosure is Totally Enclosed Fan-Cooled

Stamped Nameplate Notes:

USABLE AT 200V @ 30 HP, 77.8 AMPS @ 1.0 SF

LRA: 406/203

50HZ DATA: 25 HP,200/400V,73.2/36.6 AMPS @ 1.15 SF

50HZ DATA: 30 HP,200/400V,77.4/38.7 AMPS @ 1.00 SF

GREASE TYPE: SHELL ALVANIA R3 LITHIUM GREASE

Additional Information:

CONDUIT BOX MATERIAL: CAST IRON

SUITABLE FOR USE IN CLASS I DIVISION 2 LOCATIONS

CLASS I DIVISION 2 GROUPS A,B,C,D T3C

CLASS I ZONE 2 IIC T3C



Performance Characteristics

1st Winding 1st Connection

Design: 28AD0012A

Marks:

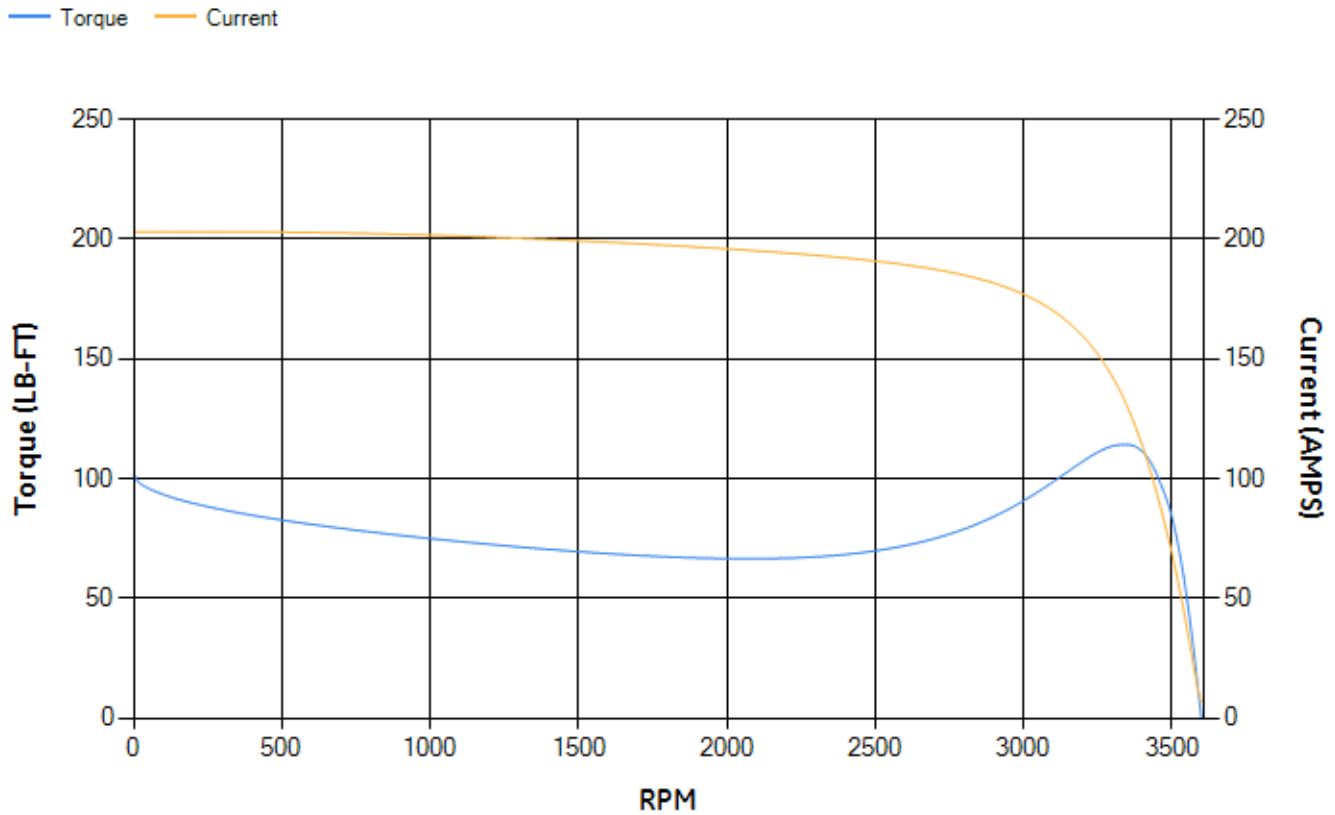
LOAD %	125.0	115.0	100.0	75.0	50.0	25.0	0.0
% EFF	92.02	92.38	93.02	93.16	92.61	89.01	0.00
% PF	90.9	91.13	91.22	90.36	86.76	73	11.35
AMPS	41.96	38.35	33.09	25.02	17.47	10.8	6.7

TORQ(FL)#FT	44.44	TORQ(LR)%FL	229.54	TORQ(BD)%FL	255.1
AMPS(LR)	202.95	PF AT START	0.34		

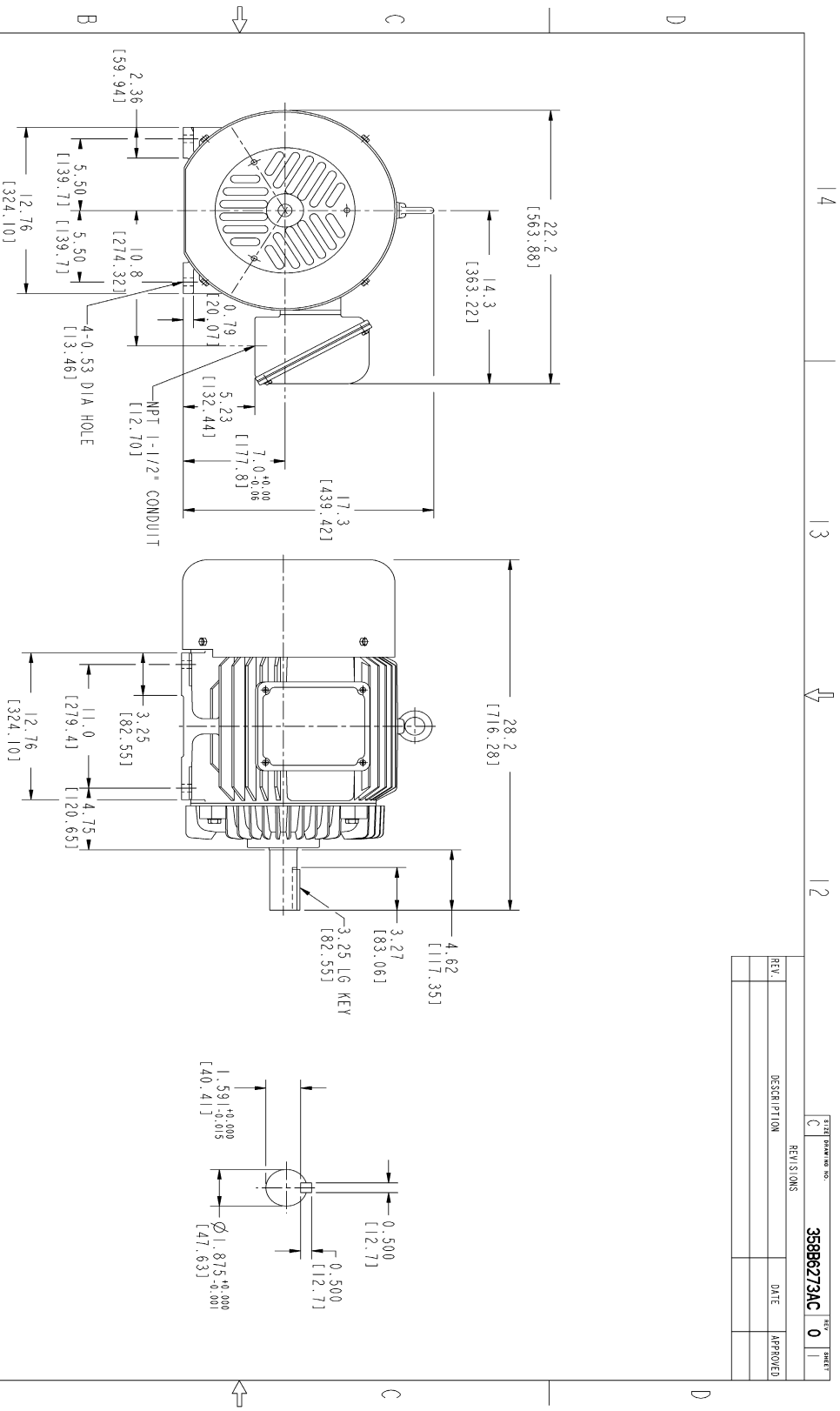
This motor is capable of two cold or one hot start with a maximum connected load inertia of 235 Lb-Ft Sq (9.89 Kg-meter Sq)at 100% voltage, where the load torque varies with the square of the speed. Acceleration time with maximum inertia and the above load type is 43 seconds. Safe stall time at 100% voltage is 76 seconds cold, 51 seconds hot. Rotor inertia is 3.14 Lb-Ft Sq (0.13 Kg-meter Sq).

Open Circuit A-C:	0.874	Short Circuit D-C:	0.019
Short Circuit A-C:	0.022	X/R Ratio:	7.122
Stator Slots:	36	Rotor Slots:	28

Speed Torque Current Curve (First Connection, First Speed)

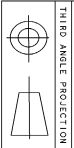


Marks:



NOTES :

- 1. DIMENSIONS ARE IN INCHES.
- 2. F-1 ASM AS SHOWN.
- 3. F-2 ASM - HAS CONDUIT BOX ON OPPOSITE SIDE.
- 4. BRACKETED DIMENSIONS ARE METRIC (MILLIMETERS)
- 5. ICA11, IP54, IMB34 APPLY



Not to Scale to 31 20000
Rev. 2, 11/13/07

FOR ADDITIONAL INFO REFER TO:		SIGNATURES		DATE	
REFLECTED DIMENSIONS	DETAIL				
DIMENSIONS SPECIFIED	SHEET				
DIMENSIONS IN INCHES	SHEET				
TOLERANCES ON:	DATE				
1 PL DECIMALS ±	11/13/07				
2 PL DECIMALS ±	11/13/07				
3 PL DECIMALS ±	11/13/07				
ANGLES ±					
FRACTIONS ±					
FINISH					
MATERIAL					
SOLID MODEL: MODEL NAME					

GENERAL ELECTRIC COMPANY

OUTLINE
 FTD - 286T TEFC CE MARK
 2729 CU IN CONDUIT BOX

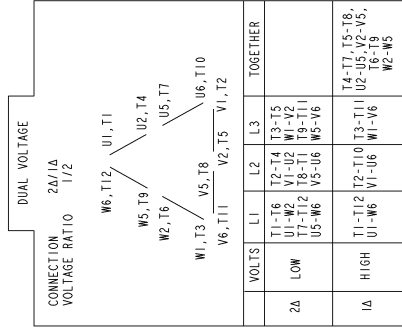
358B6273AC
 REV 0

REV.	DESCRIPTION	DATE	APPROVED

TITLE DRAWING NO. 358B6273AC
 REVISIONS 0
 SHEET 1 OF 1

Marks:

Connection Diagram
GEM2034E-FIG210



NAME:501452353 OBJECT:GEM2034E-FIG210 DATE:25-Feb-08 14:03:35

