

# Product Information Packet

November 8, 2016

Data shown is for the current revision model #. Ensure your nameplate model # matches.

<b>Model Number:</b>	<b>5KS365XAA254D4W8</b>
<b>Catalog Number:</b>	<b>M6633</b>
<b>Instruction Manual:</b>	GEI-56128
<b>Connection Diagram:</b>	GEM2034E-FIG7
<b>Outline Drawing:</b>	239C6200RR

<b>Accessory Connection Diagrams</b>			
<b>Bearing Thermocouple:</b>	None	<b>Heater:</b>	None
<b>RTD:</b>	None	<b>Thermistor:</b>	None
<b>Thermostat:</b>	None	<b>Winding Thermocouple:</b>	None
<b>Bearing RTD:</b>	None		

## Table of Contents

Specification	01
Performance Characteristics	02
Outline Drawing	03
Connection Drawing(s)	04
Spare parts	05



**Marks:**

<b>MODEL NUMBER:</b>	<b>5KS365XAA254D4W8</b>	<b>Estimated Weight:</b>	1020 Lbs
<b>Outline Drawing:</b>	239C6200RR	<b>Time Rating:</b>	CONT
<b>Connection Diagram:</b>	GEM2034E-FIG7	<b>Enclosure:</b>	TEFC
<b>Instruction Book:</b>	GEI-56128	<b>Encl Construction:</b>	661
<b>Design Code:</b>	36BD1227A	<b>Ambient Max(°C):</b>	40
<b>Type:</b>	KS	<b>Alt Ambient Max(°C):</b>	--
<b>Frame:</b>	365T	<b>Insulation Class:</b>	H
<b>Phases:</b>	3	<b>NEMA Design:</b>	B
<b>Poles:</b>	4	<b>Nominal Efficiency:</b>	95.4 %
<b>Output Power:</b>	75HP 55.5KW	<b>Guaranteed Efficiency:</b>	95.0
<b>RPM:</b>	1785	<b>3/4 Load Efficiency:</b>	95.5
<b>Voltage:</b>	460	<b>KVA Code:</b>	G
<b>Hertz:</b>	60	<b>Max KVAR:</b>	26.6
<b>Amps - FL:</b>	89.2	<b>Power Factor:</b>	82.5
<b>Service Factor:</b>	1.15	<b>Bearing - DE:</b>	NU 314
<b>Alt Service Factor:</b>	--	<b>Bearing - ODE:</b>	6314ZZC3

**Enclosure is Totally Enclosed Fan-Cooled**

**Stamped Nameplate Notes:**

API STD 661  
 ROLLER BEARING - FOR BELTED LOAD ONLY  
 DE BRG 70RU03J, ODE BRG 70BC03JPP3  
 IP 56  
 STAMP NP249A5564P051 AS BELOW:  
 MODEL:5KS365XAA254D4W8 S/N: XXX  
 CSA CERTIFIED CSA09.2216219 FOR EX NA IIC 200 C GC  
 CL 1 ZONE2 AEX NA IIC 200C;CL 1 DIV2 GRP ABCD 200C  
 IN -25C <= AMB <= 40C, 1.0 SF ON SINE-WAVE PWR  
 SURF TEMP 260C AT 1.15SF ON SINE-WAVE PWR  
 OR 200 C VT OR 230 C CT OR 200 C CHP PWM CONTROL  
 ALTERNATE RATING FOR PWM CONTROL 1.0SF 40C AMB  
 VT 0-60 HZ, CT 10-60 HZ, CHP 60-90 HZ.

**Additional Information:**

4P - T EXTN  
 PAINTED FRAME ID & SHAFT,  
 FAN COVER INSIDE & ODE E/S OUTSIDE  
 346 CU IN - 3.00" NPT  
 INPRO SEAL BOTH ENDS  
 OIL RESISTANT SLEEVING ON LEADS  
 .002" TIR SHAFT RUNOUT  
 ROUTINE TEST REPORT AND 5 POINT VIBRATION TEST  
 REPORT INCLUDED IN C/B  
 COPPER WASHER UNDER HEADS OF BEARING CAP BOLTS,  
 APPLY TITE-SEAL (A50CD427A) ON BEARING CAP SCREWS,  
 RABBETS AND PLUG THREADS.

B5F4C4 HIGH FATIGUE STEEL AISI 4142 SHAFT MATERIAL  
GROUND PAD  
VERTICAL MOUNT SHAFT UP

**Performance Characteristics**

1st Winding 1st Connection

**Design: 36BD1227A**

**Marks:**

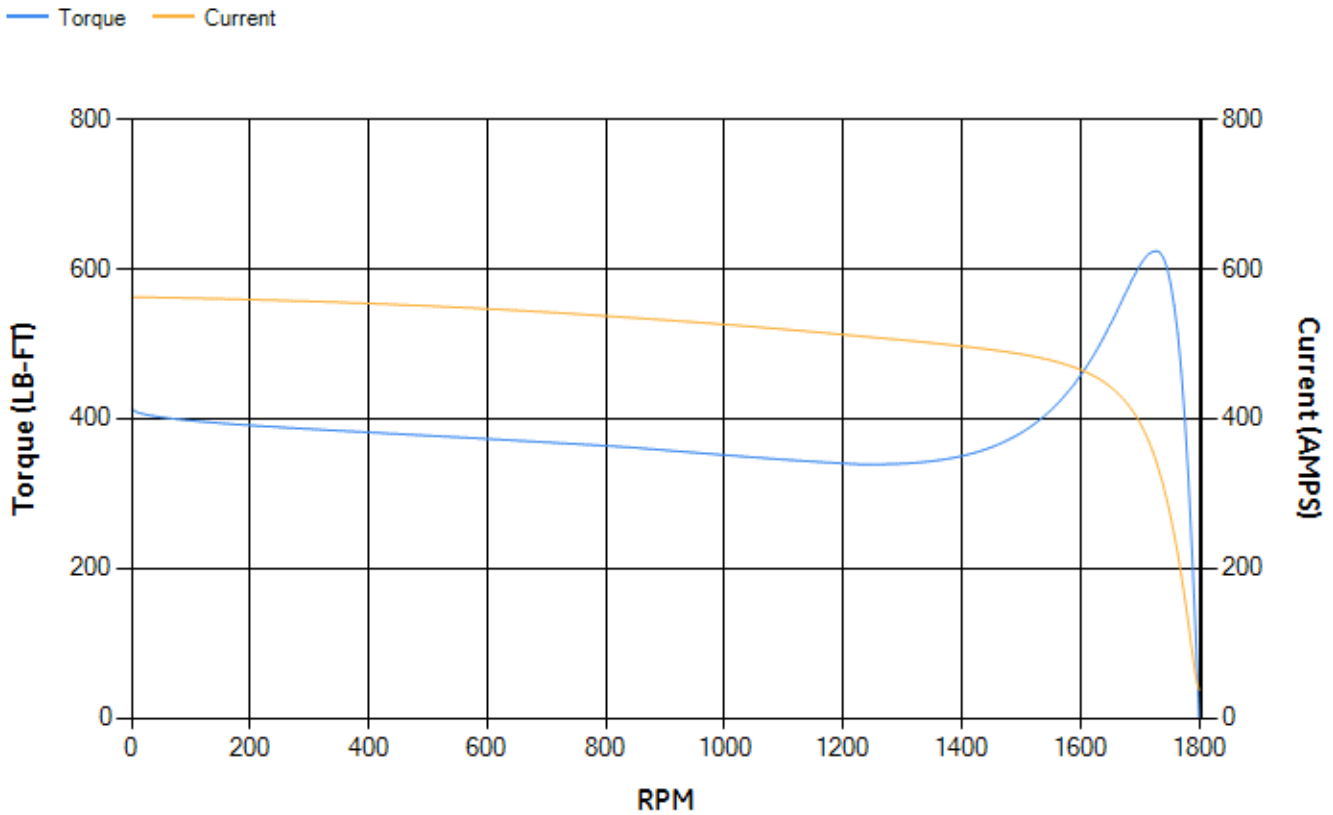
LOAD %	125.0	115.0	100.0	75.0	50.0	25.0	0.0
% EFF	94.85	95.06	95.52	95.53	95.19	92.83	0.00
% PF	84.62	83.96	82.42	77.56	67.04	44.23	2.93
AMPS	109.33	101.14	88.97	71.05	55	42.75	37.05

<b>TORQ(FL)#FT</b>	220.86	<b>TORQ(LR)%FL</b>	187.4	<b>TORQ(BD)%FL</b>	281.78
<b>AMPS(LR)</b>	562.55	<b>PF AT START</b>	0.32		

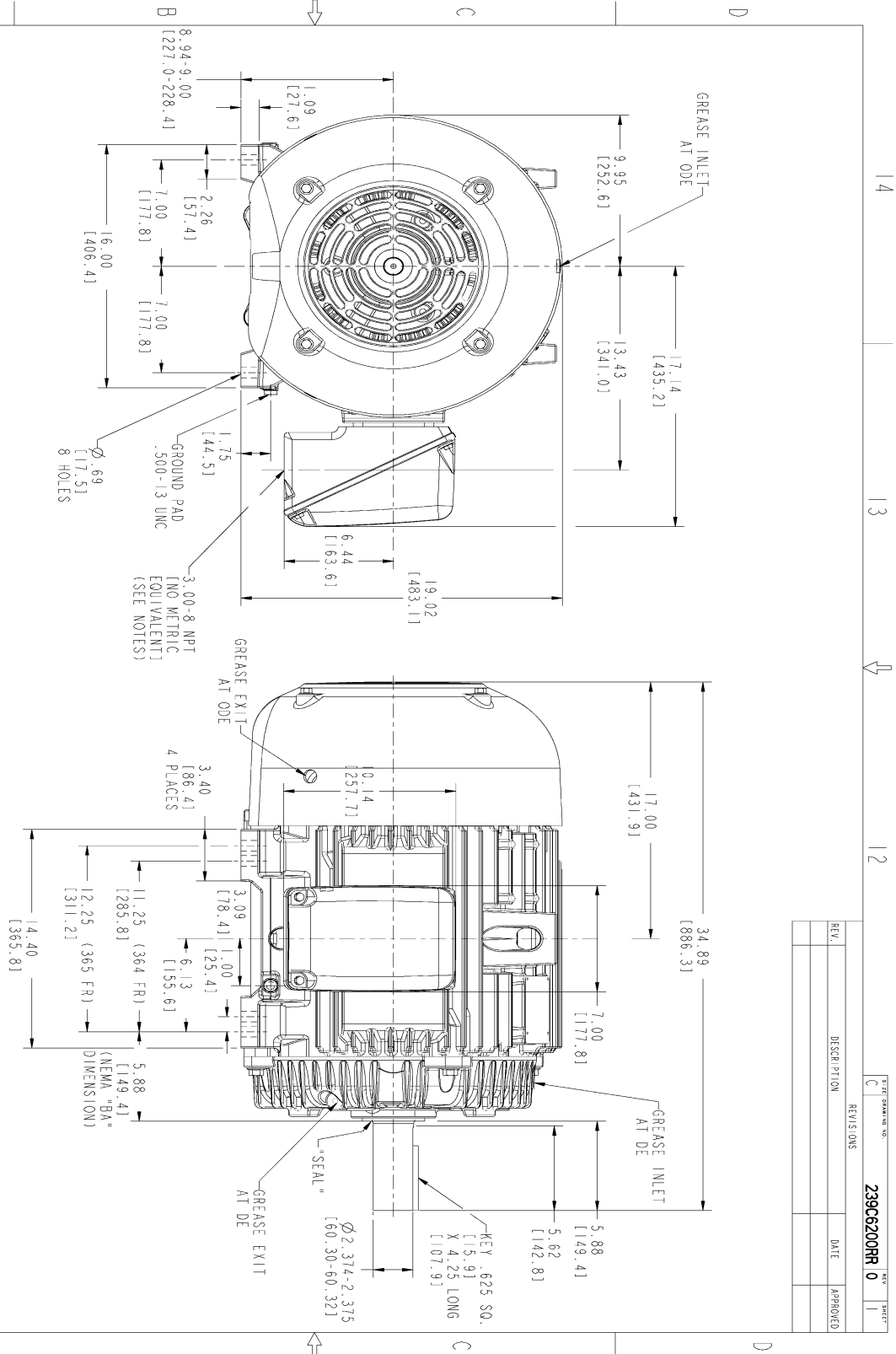
This motor is capable of two cold or one hot start with a maximum connected load inertia of 1432 Lb-Ft Sq (60.29 Kg-meter Sq)at 100% voltage, where the load torque varies with the square of the speed. Acceleration time with maximum inertia and the above load type is 27 seconds. Safe stall time at 100% voltage is 65 seconds cold, 32 seconds hot. Rotor inertia is 15.28 Lb-Ft Sq (0.64 Kg-meter Sq).

<b>Open Circuit A-C:</b>	0.626	<b>Short Circuit D-C:</b>	0.025
<b>Short Circuit A-C:</b>	0.034	<b>X/R Ratio:</b>	9.412
<b>Stator Slots:</b>	60	<b>Rotor Slots:</b>	50

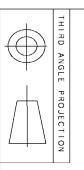
**Speed Torque Current Curve (First Connection, First Speed)**



Marks:



- NOTES :
1. CONDUIT BOX MAY BE PLACED WITH THE ENTRANCE DOWN, UP OR ON EITHER SIDE.
  2. F-1 ASM AS SHOWN.
  3. F-2 ASM HAS CONDUIT BOX ON OPPOSITE SIDE.
  4. BRACKETED DIMENSIONS ARE METRIC (MILLIMETERS).
  5. TOLERANCE ON PERMISSIBLE SHAFT EXTENSION RUNOUT IS .002 T.I.R.



REV.	DESCRIPTION	DATE	APPROVED

MODEL	SIGNATURES	DATE	 <b>GENERAL ELECTRIC COMPANY</b>
SCALE	PUNISH	07/30/15	
DWGNO	ADAMANK	07/30/15	<b>OUTLINE</b> <b>364/365 T TFC, XSD 841</b> <b>346 CUL CONDUIT BOX, 0002 TR</b> <b>239C6200RR</b>
DWGDATE			
ISSUED	PUNISH	07/30/15	
TITLE 364/365 T TFC, XSD 841 346 CUL CONDUIT BOX, 0002 TR			SCALE: 0.240 REF. NO. 239C6200RR
SIZE DRAWING C			
SHEET NO. 239C6200RR			SHEET 1 OF 1

Marks:

**Connection Diagram**  
**GEM2034E-FIG7**



End shield Assembly		
Part Description	DE Side Part#	ODE Side Part#
End Shield	115E4250AA1	115E4250LJ1
Bearing	235A2524AA01	235A2516AF01
Slinger/Inproseal	235A4575GS3	235A4575GS3

Fan & Fan Cover Assembly	
Part Description	Part#
Fan	159C7100AA1
Fan Cover	128D6810AA1

Conduit & Accessories Box Assembly	
Part Description	Part#
Conduit Box	149C4429AA2

Mechanical Accessories	
Part Description	Part#
Brake	
Tachometer	