

Product Information Packet

November 8, 2016

Data shown is for the current revision model #. Ensure your nameplate model # matches.

Model Number:	5KS145STE205A
Catalog Number:	M7725
Instruction Manual:	GEI-M1031
Connection Diagram:	GEM2034E-FIG203
Outline Drawing:	358B6269AB

Accessory Connection Diagrams			
Bearing Thermocouple:	None	Heater:	None
RTD:	None	Thermistor:	None
Thermostat:	None	Winding Thermocouple:	None
Bearing RTD:	None		

Table of Contents	
Specification	01
Performance Characteristics	02
Outline Drawing	03
Connection Drawing(s)	04

Marks:

MODEL NUMBER:	5KS145STE205A	Estimated Weight:	67 Lbs
Outline Drawing:	358B6269AB	Time Rating:	CONT
Connection Diagram:	GEM2034E-FIG203	Enclosure:	TEFC
Instruction Book:	GEI-M1031	Encl Construction:	SD
Design Code:	14AD1013A	Ambient Max(°C):	40
Type:	KS	Alt Ambient Max(°C):	--
Frame:	145T	Insulation Class:	F
Phases:	3	NEMA Design:	B
Poles:	4	Nominal Efficiency:	86.5 %
Output Power:	2HP 1.5KW	Guaranteed Efficiency:	84.0
RPM:	1730	3/4 Load Efficiency:	88.9
Voltage:	230/460	KVA Code:	L
Hertz:	60	Max KVAR:	0.9
Amps - FL:	5.4/2.7	Power Factor:	79.5
Service Factor:	1.15	Bearing - DE:	6205ZZC3
Alt Service Factor:	--	Bearing - ODE:	6205ZZC3

Enclosure is Totally Enclosed Fan-Cooled

Stamped Nameplate Notes:

USABLE AT 200V @ 2 HP, 5.9 AMPS @ 1.0 SF

LRA: 40.2/20.1

50HZ DATA: 1.5 HP, 200/400V, 5.4/2.7 AMPS @ 1.15 SF

50HZ DATA: 2 HP, 200/400V, 6.2/3.1 AMPS @ 1.00 SF

GREASE TYPE: SHELL ALVANIA R3 LITHIUM GREASE

Additional Information:

CONDUIT BOX MATERIAL: CAST IRON

SUITABLE FOR USE IN CLASS I DIVISION 2 LOCATIONS

CLASS I DIVISION 2 GROUPS A,B,C,D T3C

CLASS I ZONE 2 IIC T3C



Performance Characteristics

1st Winding 1st Connection

Design: 14AD1013A

Marks:

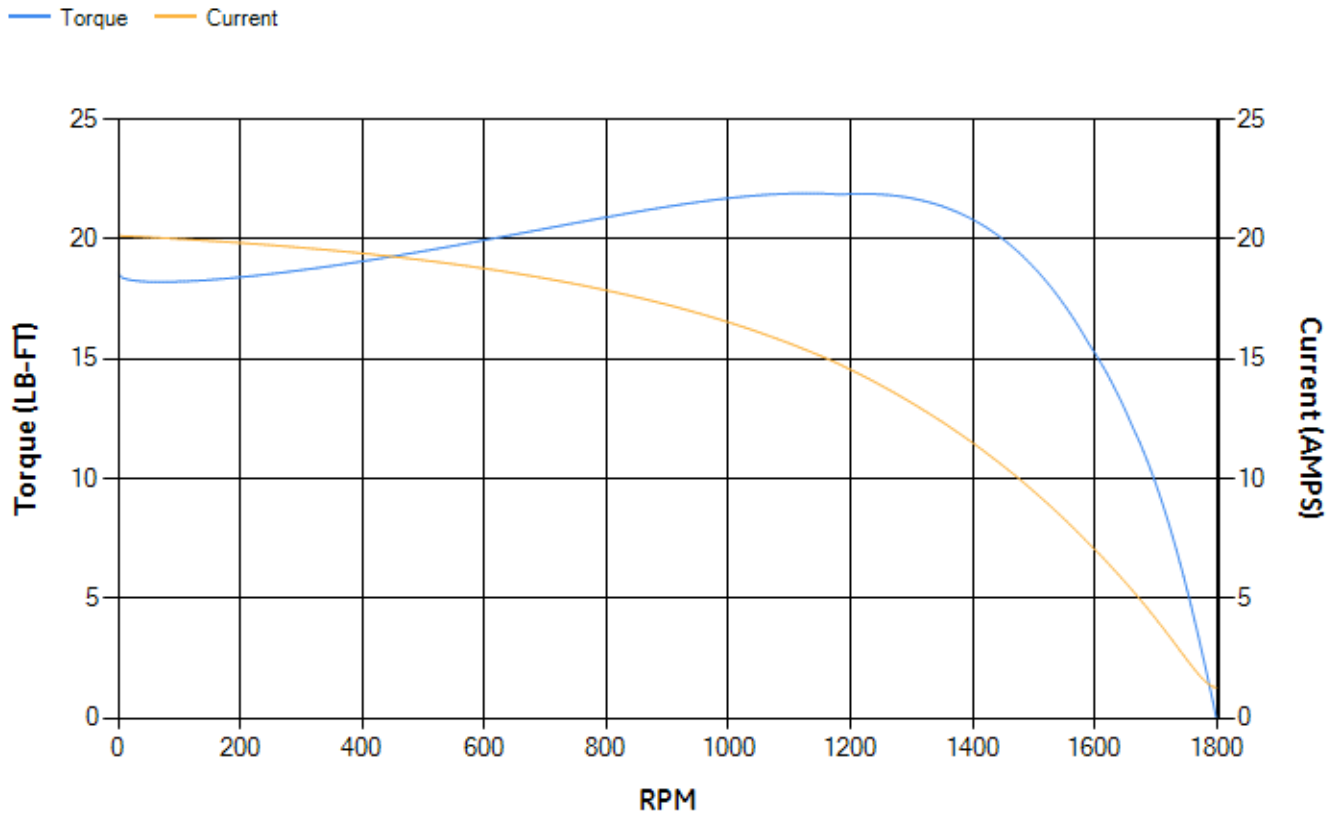
LOAD %	125.0	115.0	100.0	75.0	50.0	25.0	0.0
% EFF	86.71	87.36	88.36	88.86	88.17	82.94	0.00
% PF	82.65	81.67	79.54	73.4	61.65	40.05	6.49
AMPS	3.26	3.02	2.66	2.15	1.72	1.41	1.26

TORQ(FL)#FT	6.06	TORQ(LR)%FL	306.19	TORQ(BD)%FL	355.04
AMPS(LR)	20.14	PF AT START	0.55		

This motor is capable of two cold or one hot start with a maximum connected load inertia of 90 Lb-Ft Sq (3.79 Kg-meter Sq)at 100% voltage, where the load torque varies with the square of the speed. Acceleration time with maximum inertia and the above load type is 30 seconds. Safe stall time at 100% voltage is 71 seconds cold, 49 seconds hot. Rotor inertia is 0.13 Lb-Ft Sq (0.01 Kg-meter Sq).

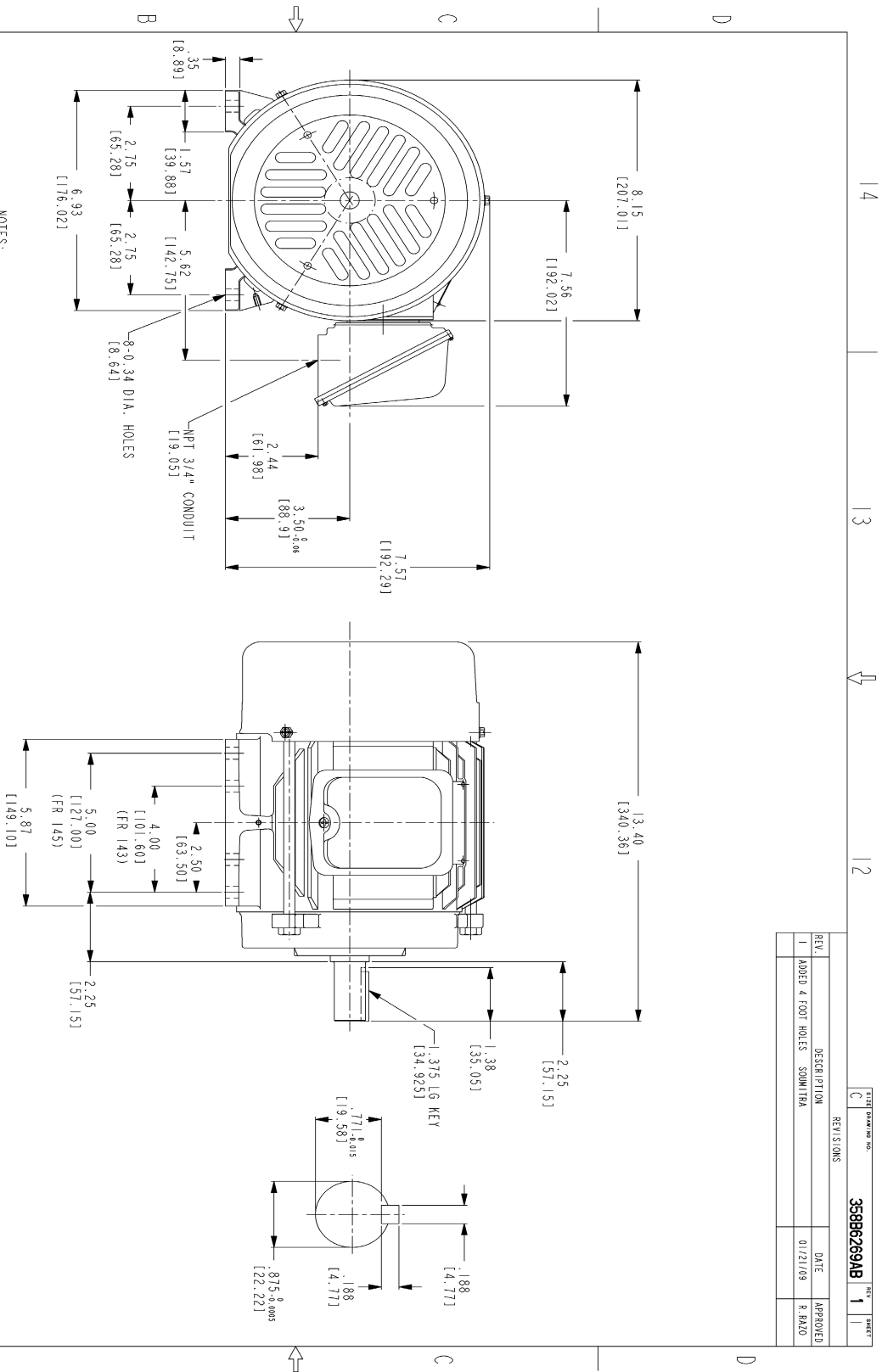
Open Circuit A-C:	0.139	Short Circuit D-C:	0.007
Short Circuit A-C:	0.007	X/R Ratio:	2.676
Stator Slots:	36	Rotor Slots:	28

Speed Torque Current Curve (First Connection, First Speed)



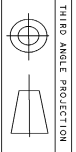
NAME:501452442 OBJECT:358B6269AB DATE:22-Jan-09 11:08:53

Marks:



- NOTES:
1. DIMENSIONS ARE IN INCHES.
 2. F-1 ASM AS SHOWN.
 3. F-2 ASM - HAS CONDUIT BOX ON OPPOSITE SIDE.
 4. BRACKETED DIMENSIONS ARE METRIC (MILLIMETERS)
 5. IC411, 1P94, 1MB34 APPLY.

REV.	DESCRIPTION	DATE	APPROVED
1	ADDED 4 FOOT HOLES	01/21/09	R. PALO



THIRD ANGLE PROJECTION

Part must conform to SI 900000 Sect 4, Toxicity Procedure

FOR ADDITIONAL INFO REFER TO:	SIGNATURES	DATE
REVISIONS		
DRAWING SPECIFIED		
DIMENSIONS ARE IN INCHES		
TOLERANCE ON DIMENSIONS		
1. F.L. DECIMALS ± 0.1		
2. F.L. DECIMALS ± 0.02		
3. F.L. DECIMALS ± 0.05		
ANGLES ± 0.5		
FRACTIONS ±		
FINISH		

GENERAL ELECTRIC COMPANY	DATE
GE Consumer & Industrial	12/26/07
SKETCHED	12/26/07
DESIGNED	12/26/07
ENGINEER	12/26/07
QUALITY	
ISSUED	12/26/07
SCALE: DRAWING SCALE	
SCALE: MODEL NAME	
SCALE: DRAWING SCALE	
SCALE: DRAWING SCALE	

OUTLINE
 FTD - H37/H37 TFC CE MARK
 471 CU IN CONDUIT BOX

358B6269AB

REV 1

14

13

12

11

14

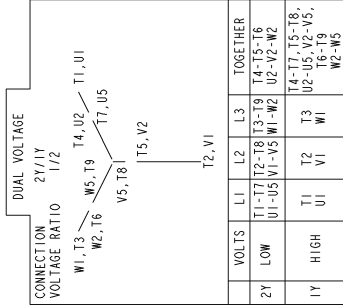
13

12

358B6269AB REV 1 SHEET 1 OF 1

Marks:

Connection Diagram
GEM2034E-FIG203



NAME: 500903578 OBJECT: GEM2034E-FIG203 DATE: 03-Nov-06 13:53:10