

Product Information Packet

March 4, 2014

Data shown is for the current revision model #. Ensure your nameplate model # matches.

Model Number:	5KAF447SAA221A
Catalog Number:	M9323
Instruction Manual:	GEI-56128
Connection Diagram:	GEM2034E-FIG20
Outline Drawing:	239C7800AB

Accessory Connection Diagrams			
Bearing Thermocouple:	None	Heater:	None
RTD:	None	Thermistor:	None
Thermostat:	None	Winding Thermocouple:	None
Bearing RTD:	None		

Table of Contents	
Specification	01
Performance Characteristics	02
Outline Drawing	03
Connection Drawing(s)	04

Marks:

MODEL NUMBER:	5KAF447SAA221A	Estimated Weight:	2420 Lbs
Outline Drawing:	239C7800AB	Time Rating:	CONT
Connection Diagram:	GEM2034E-FIG20	Enclosure:	TEBC
Instruction Book:	GEI-56128	Encl Construction:	A\$D
Design Code:	49BD1077AA	Ambient Max(°C):	40
Type:	KAF	Alt Ambient Max(°C):	65
Frame:	447T	Insulation Class:	H
Phases:	3	NEMA Design:	-
Poles:	4	Nominal Efficiency:	96.2 %
Output Power:	200HP 148KW	Guaranteed Efficiency:	96.9
RPM:	1790	3/4 Load Efficiency:	96.9
Voltage:	460	KVA Code:	H
Hertz:	60	Max KVAR:	57.1
Amps - FL:	224.0	Power Factor:	87.0
Service Factor:	1.00	Bearing - DE:	6318ZC3
Alt Service Factor:	1.00	Bearing - ODE:	6318ZC3-VL0241

Stamped Nameplate Notes:

ALTERNATE RATING INVERTER DUTY 1.0 SF 40C AMBIENT
 SUITABLE FOR CONSTANT TORQUE;PWM OPERATION;0-60HZ
 THERMOSTAT LEADS PC-PC TRIP

Additional Information:

4P - T EXTN - SPLIT LEAD
 700 CU IN - 3.00" NPT
 E/S GROUND BOLT MTD ON DE C/BOX SIDE NEAR FOOT
 OIL RESISTANT SLEEVING ON LEADS
 TACH PROVISION MOTOR
 N.C. TRIP TSTAT LDS TO MAIN CONDUIT BOX
 PAINTED ODE ACCESSORY RABBET
 SHAFT GROUND RING #235A4970AG8 MOUNTED ON
 DE BEARING CAP
 BLOWER MOTOR 208-230/460V,6.2-5.8/2.9AMPS,2HP
 BLOWER MOTOR 60/50HZ,1725/1425RPM



Performance Characteristics

1st Winding 1st Connection

Design: 49BD1077AA

Marks:

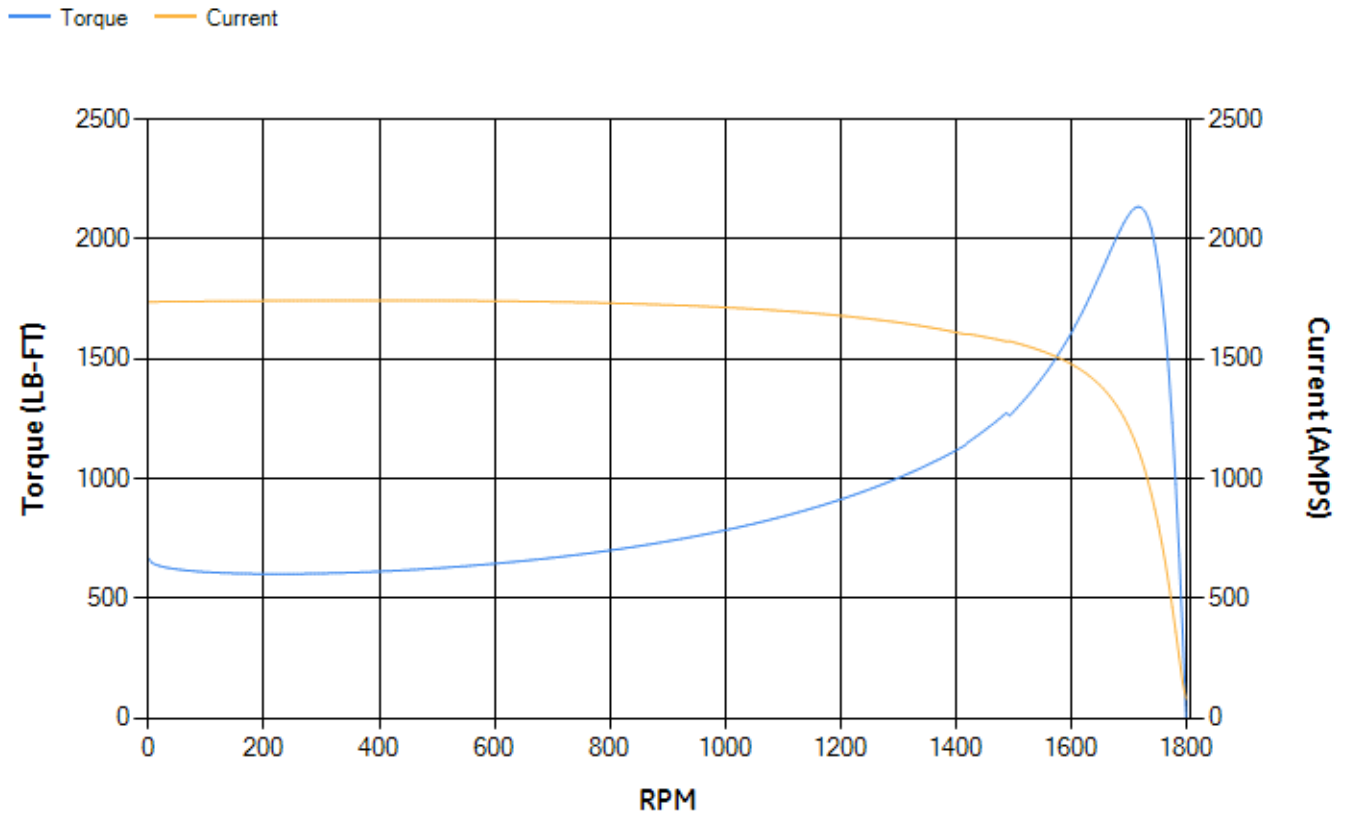
LOAD %	125.0	115.0	100.0	75.0	50.0	25.0	0.0
% EFF	96.18	96.33	96.73	96.7	96.49	94.84	0.00
% PF	88.84	88.31	87.1	83.18	74.08	51.43	2.69
AMPS	273.86	253.03	222.19	174.54	130.93	95.95	79.6

TORQ(FL)#FT	586.92	TORQ(LR)%FL	113.33	TORQ(BD)%FL	363.33
AMPS(LR)	1737.49	PF AT START	0.2		

This motor is capable of two cold or one hot start with a maximum connected load inertia of 6632 Lb-Ft Sq (279.21 Kg-meter Sq)at 100% voltage, where the load torque varies with the square of the speed. Acceleration time with maximum inertia and the above load type is 55 seconds. Safe stall time at 100% voltage is 113 seconds cold, 66 seconds hot. Rotor inertia is 71.88 Lb-Ft Sq (3.03 Kg-meter Sq).

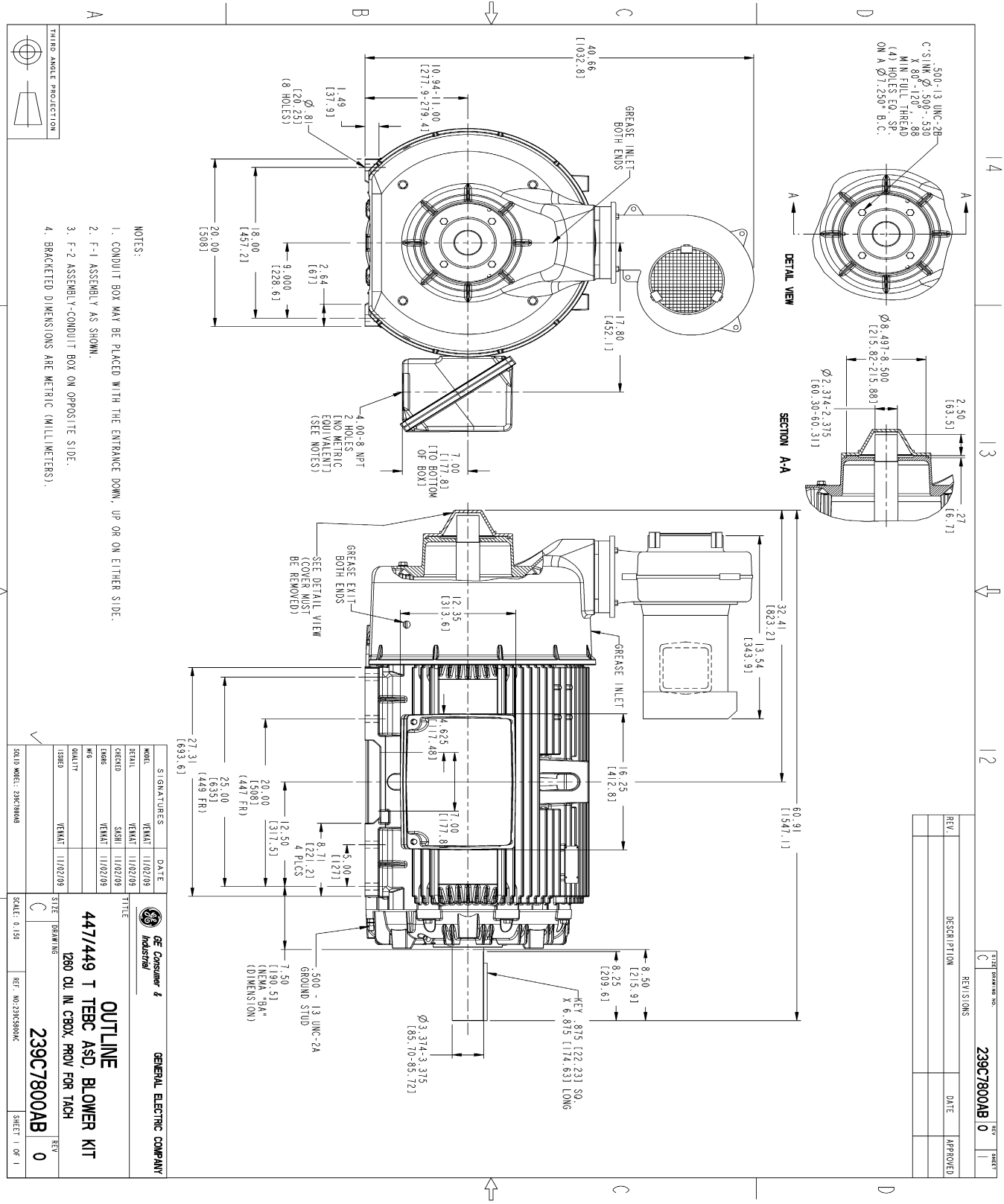
Open Circuit A-C:	1.159	Short Circuit D-C:	0.03
Short Circuit A-C:	0.048	X/R Ratio:	11.315
Stator Slots:	72	Rotor Slots:	58

Speed Torque Current Curve (First Connection, First Speed)



NAME:120004637 OBJECT:239C7800AB DATE:01-Dec-09 12:52:32

Marks:



- NOTES:
1. CONDUIT BOX MAY BE PLACED WITH THE ENTRANCE DOWN, UP OR ON EITHER SIDE.
 2. F-1 ASSEMBLY AS SHOWN.
 3. F-2 ASSEMBLY-CONDUIT BOX ON OPPOSITE SIDE.
 4. BRACKETED DIMENSIONS ARE METRIC (MILLIMETERS).

REV.	DESCRIPTION	DATE	APPROVED

SIGNATURES	DATE
DESIGNED	11/02/09
CHECKED	11/02/09
ISSUED	11/02/09

GE Consumer & Industrial

GENERAL ELECTRIC COMPANY

447/449 T TERC ASD, BLOWER KIT

1280 CU. IN. CBX, PROV FOR TACH

239C7800AB

SCALE: 0.150

SHEET 1 OF 1

Marks:

Connection Diagram
GEM2034E-FIG20

