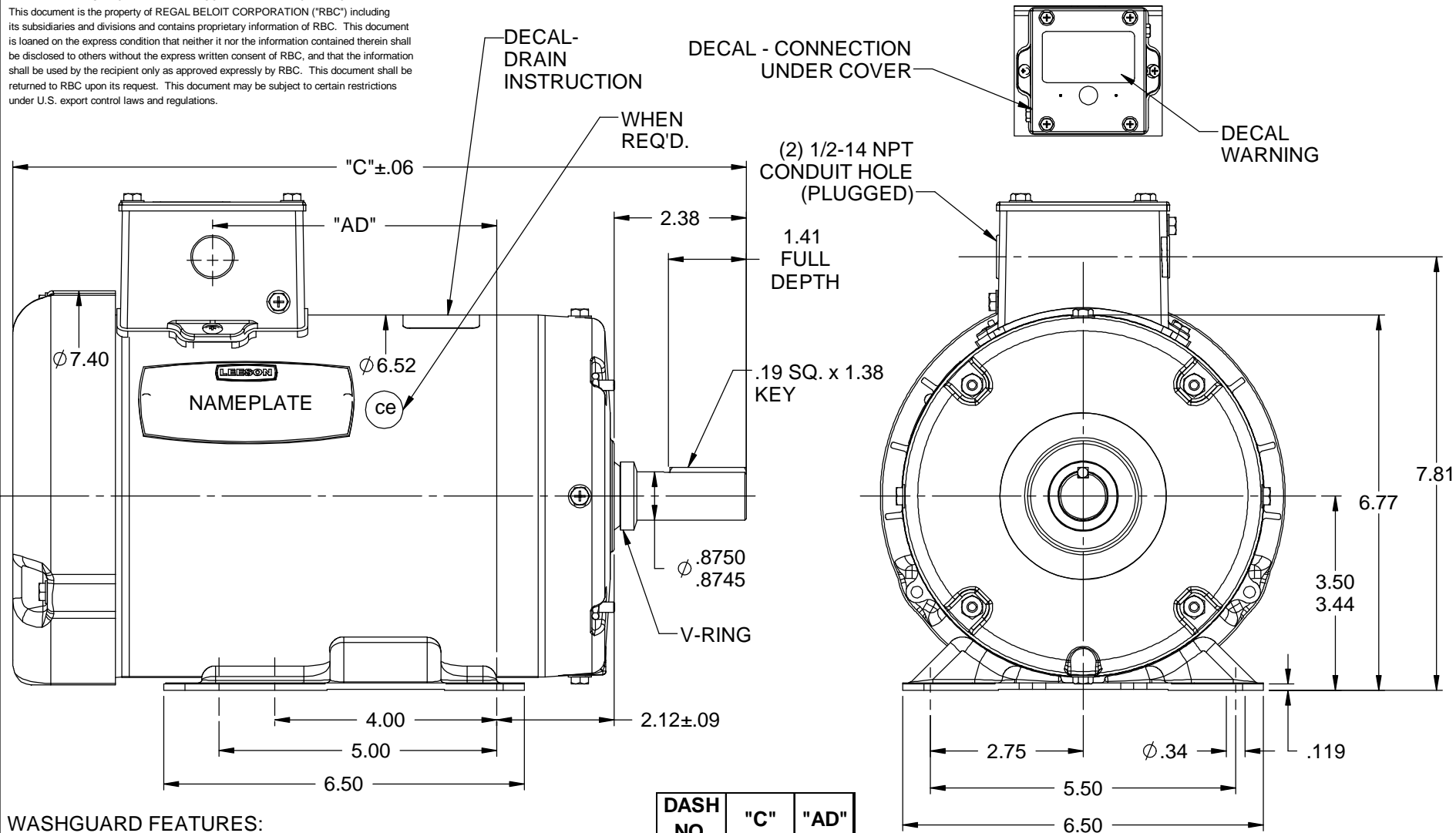


RBC PROPRIETARY AND CONFIDENTIAL INFORMATION

This document is the property of REGAL BELOIT CORPORATION ("RBC") including its subsidiaries and divisions and contains proprietary information of RBC. This document is loaned on the express condition that neither it nor the information contained therein shall be disclosed to others without the express written consent of RBC, and that the information shall be used by the recipient only as approved expressly by RBC. This document shall be returned to RBC upon its request. This document may be subject to certain restrictions under U.S. export control laws and regulations.



WASHGUARD FEATURES:

- 1) SHAFT SEALS & V-RING
- 2) PLUGGED DRAIN HOLES IN ENDBELLS & CONDUIT BOX
- 3) STAINLESS STEEL SHAFT, HARDWARE, & NAMEPLATE
- 4) GASKETS THROUGHOUT

DASH NO.	"C"	"AD"
700	12.72	4.62
750	13.22	5.12
800	13.72	5.62

				TOLERANCES UNLESS SPECIFIED		ELECTRIC MOTORS GEARMOTORS AND DRIVES		DRAWN MBR 12/19/07	
				DEC				CHK	
				.X		$\pm .1$		APPR	
				.XX		$\pm .03$		SCALE 3:8	
02	ADDED WARNING DECAL PER ISAAC:09-0365	VS 3/13/09		.XXX	$\pm .005$	TITLE OUTLINE - 140T FRAME		REF OLG121191	
01	ADDED NAMEPLATE NOTE AS PER ISAAC #08-4183	GRB9/18/2008	VS	.XXXX	$\pm .0005$	MAT'L FEATHER PICKER		FMF G121191	
NO	REVISION	BY & DATE	CHK	ANG	$\pm 1/2^\circ$	FINISH		PAGE OF	
			RFP	PREV		SIZE	DRAWING NO		REV
			NETWORK FILE NAME			A	028810		02

THIRD ANGLE
PROJECTION