

# Saw Arbor Motors

## TEFC - Purchasing Data

Rated Output		IEC Frame	List Price	Part Number	Full Load Current		Full Load Efficiency	Shipping Weight (lbs.)	Overall Length "C" Dim. (in.)
HP	RPM				460V	575V			
3	3600	80S	\$1,003	SR003X02	4.29	3.43	80.5	84.9	18.543
	3600	80M	1,337	SR005X02	6.65	5.32	85.0	99.2	20.512
5	1800	90L	1,851	SR005X04	7.03	5.62	84.5	143	26.476
	3600	80L	1,677	SR007X02	9.76	7.81	87.4	120	22.48
7.5	1800	90L	2,065	SR007X04	10.1	8.08	85.3	165	26.476
	3600	90L	2,339	SR010X02	12.3	9.84	85.0	166	26.476
10	1800	90L	2,612	SR010X04	14.1	11.3	85.5	178	26.476

Shaft: Replace 'R' with 'L' for left side shaft  
 Voltage: Replace 'X' with '4' for 208-230/460V  
 Replace 'X' with '5' for 575V

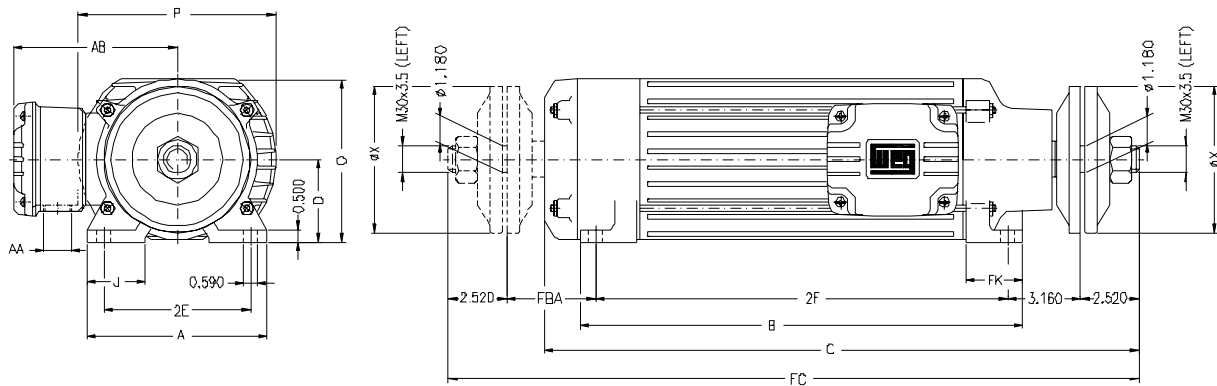
# Saw Arbor Motors

## TEFC - Electrical Data

Rated Output	Full Load Speed (RPM)	NEMA Frame	Full Load Current (A)			Locked rotor current (I <sub>L</sub> /I <sub>n</sub> )	Locked rotor torque	Breakdown torque	Locked rotor time (s)	Weight (lb)	Noise level	Service Factor	Efficiency (%)			Power factor		
			230V	460V	575V								50%	75%	100%	50%	75%	100%
3	3500	80S	8.58	4.29	3.43	7.3	330%	370%	9	84.9	62	1.15	76.0	79.5	80.5	0.65	0.75	0.80
			1740	90L	14.1	7.03	5.62	8	380%	410%	8	143	51	1.15	82.0	84.0	84.5	0.58
5	3470	80M	13.3	6.65	5.32	8	340%	410%	7	99.2	62	1.15	82.0	84.5	85.0	0.66	0.77	0.82
			3490	80L	19.5	9.76	7.81	9.2	400%	460%	5	120	62	1.15	85.2	87.0	87.4	0.64
7.5	1730	90L	20.2	10.1	8.08	8.2	370%	400%	7	165	51	1.15	83.5	85.0	85.3	0.60	0.74	0.80
			3480	90L	24.6	12.3	9.84	8.5	400%	420%	7	166	68	1.15	82.0	84.5	85.0	0.77
10	1720	90L	28.2	14.1	11.3	8	400%	400%	6	178	51	1.15	84.5	85.5	85.5	0.57	0.71	0.78

# Saw Arbor Motors

## TEFC - Electrical Data



IEC FRAMES	2E	J	A	P	AB	2F	FK	FK1	B	FBA	D	O	C	FC	AA	X	BEARINGS	
																	D.E.	N.D.E.
80S						10.236			12.008				18.543	22.440				
80M	7.480	1.378	8.858	7.480	5.984	12.205	1.772	1.772	13.976	3.150	3.150	6.063	20.512	24.409	NPT0.75"	4.724	6307-ZZ	6207-ZZ
80L						14.173			15.949				22.480	26.377				
90L	6.299	2.500	7.756	8.189	6.575	20.079	2.441	4.960	21.378	3.150	3.543	6.968	26.476	29.842	NPT1"	6.299	6308-ZZ	6208-ZZ