

Product Information Packet

January 13, 2017

Data shown is for the current revision model #. Ensure your nameplate model # matches.

Model Number:	5KS324SAJ208A
Catalog Number:	V4988
Instruction Manual:	GEK-95655
Connection Diagram:	GEM2034E-FIG7
Outline Drawing:	148CB32TLHNBCAA0002

Accessory Connection Diagrams			
Bearing Thermocouple:	None	Heater:	3027JE-1C
RTD:	None	Thermistor:	None
Thermostat:	None	Winding Thermocouple:	None
Bearing RTD:	None		

Table of Contents

Specification	01
Performance Characteristics	02
Outline Drawing	03
Connection Drawing(s)	04
Spare parts	05



Marks:

MODEL NUMBER:	5KS324SAJ208A	Estimated Weight:	710 Lbs
Outline Drawing:	148CB32TLHNBCAA0002	Time Rating:	CONT
Connection Diagram:	GEM2034E-FIG7	Enclosure:	TEFC
Instruction Book:	GEK-95655	Encl Construction:	X\$D
Design Code:	32BD1182A	Ambient Max(°C):	40
Type:	KS	Alt Ambient Max(°C):	--
Frame:	L324HP16	Insulation Class:	H
Phases:	3	NEMA Design:	B
Poles:	4	Nominal Efficiency:	94.1 %
Output Power:	40HP 29.6KW	Guaranteed Efficiency:	93.0
RPM:	1780	3/4 Load Efficiency:	94.4
Voltage:	460	KVA Code:	G
Hertz:	60	Max KVAR:	15.2
Amps - FL:	49.7	Power Factor:	80.0
Service Factor:	1.15	Bearing - DE:	6312C3
Alt Service Factor:	--	Bearing - ODE:	6312ZC3

Enclosure is Totally Enclosed Fan-Cooled

Stamped Nameplate Notes:

HTR LDS HE1-HE2 115V 100W
 INVERTER DUTY PER NEMA MG1 PART 31
 ALTERNATE RATING FOR PWM CONTROL:1.0SF 40C AMBIENT
 VAR TORQUE RANGE 0-60 HZ
 SUITABLE FOR 30 HP, 380V, 50 HZ WITH
 45.4 AMPS AND 1480 RPM AT 1.00 SF
 API 610 12TH EDITION SHAFT DIMENSIONS

Additional Information:

4 POLE, VERT SOLID SHAFT NORMAL THRUST
 346 CU IN - 3.00" NPT
 INPRO SEAL ON UPPER END
 OIL RESISTANT SLEEVING ON LEADS
 115V HTR LDS TO MAIN CONDUIT BOX
 BEARING LIFE 8760 HOURS AT 1182 LB THRUST
 BRASS TEE DRAIN
 RCF: 3210 CPM AT C/BOX SIDE, 3510 CPM AT
 90 DEG FROM C/ BOX SIDE
 CG: 12.00 IN FROM P-BASE FACE

Performance Characteristics

1st Winding 1st Connection

Design: 32BD1182A

Marks:

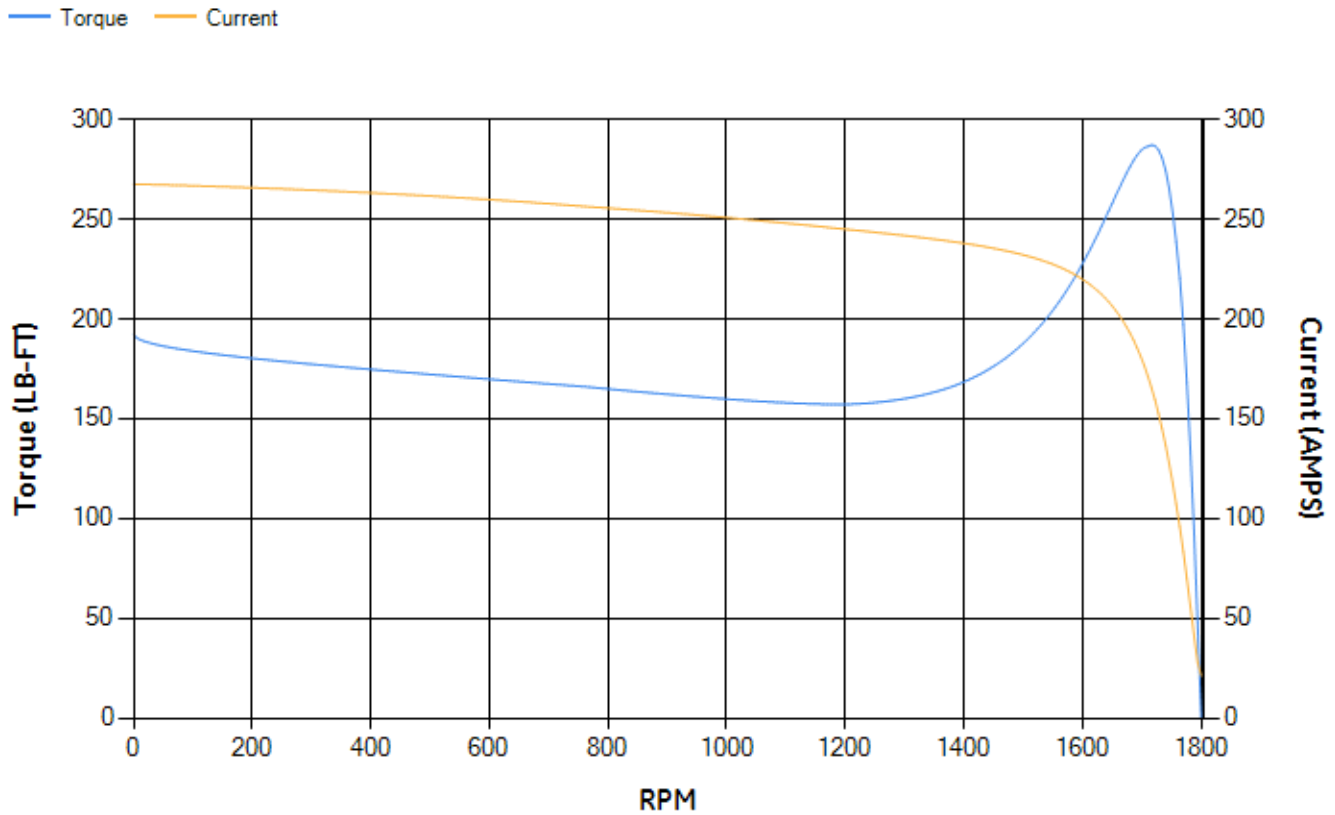
LOAD %	125.0	115.0	100.0	75.0	50.0	25.0	0.0
% EFF	93.44	93.73	94.29	94.38	93.95	91	0.00
% PF	82.2	81.63	80.17	75.3	64.74	42.47	3.55
AMPS	60.93	56.27	49.42	39.51	30.78	24.22	21.15

TORQ(FL)#FT	118.11	TORQ(LR)%FL	162.86	TORQ(BD)%FL	242.16
AMPS(LR)	267.58	PF AT START	0.33		

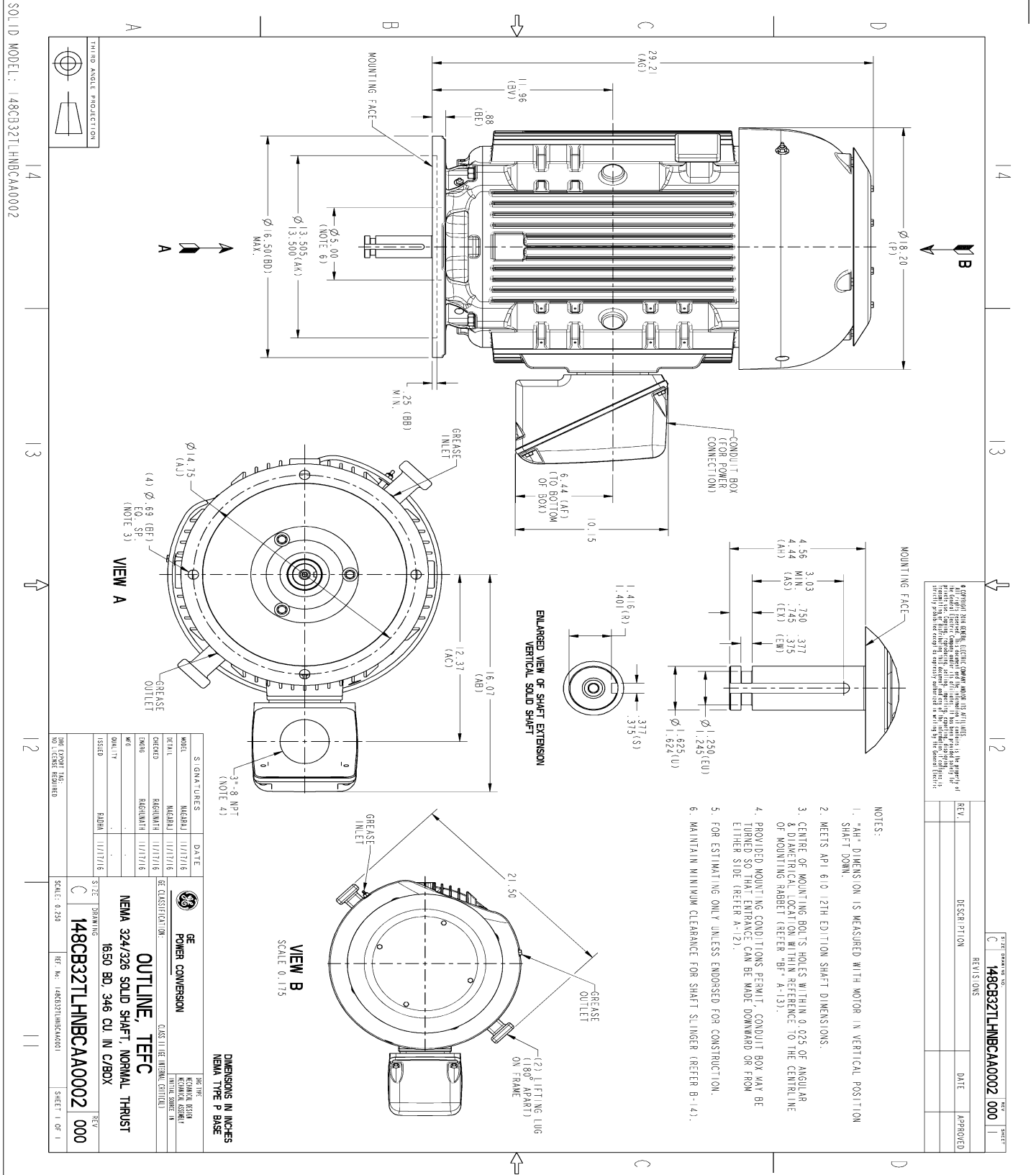
This motor is capable of two cold or one hot start with a maximum connected load inertia of 952 Lb-Ft Sq (40.08 Kg-meter Sq) at 100% voltage, where the load torque varies with the square of the speed. Acceleration time with maximum inertia and the above load type is 40 seconds. Safe stall time at 100% voltage is 88 seconds cold, 47 seconds hot. Rotor inertia is 7.01 Lb-Ft Sq (0.3 Kg-meter Sq).

Open Circuit A-C:	0.48	Short Circuit D-C:	0.022
Short Circuit A-C:	0.032	X/R Ratio:	8.428
Stator Slots:	48	Rotor Slots:	38

Speed Torque Current Curve (First Connection, First Speed)



Marks:



© COPYRIGHT 2017 GE. ALL RIGHTS RESERVED. THIS DOCUMENT IS THE PROPERTY OF GE. IT IS TO BE USED FOR THE SPECIFIC PROJECT AND NOT TO BE REPRODUCED OR TRANSMITTED IN ANY FORM OR BY ANY MEANS, ELECTRONIC OR MECHANICAL, INCLUDING PHOTOCOPYING, RECORDING, OR BY ANY INFORMATION STORAGE AND RETRIEVAL SYSTEM, WITHOUT THE WRITTEN PERMISSION OF GE. THE INFORMATION CONTAINED HEREIN IS CONFIDENTIAL AND IS TO BE KEPT AS SUCH.

REV.	DESCRIPTION	DATE	APPROVED

SIGNED AND DATED:		DATE	
DESIGN	MECHANICAL	11/17/16	
CHECKED	MECHANICAL	11/17/16	
DESIGNED	MECHANICAL	11/17/16	
DRAWN	MECHANICAL	11/17/16	
ISSUED	MECHANICAL	11/17/16	

SCALE: 0.250

GE POWER CONVERSION

OUTLINE, TEFC
 NEMA 324/326 SOLID SHAFT, NORMAL THRUST
 1650 BD, 346 CU IN C/BOX

148CB32TLHNBCAA0002

SOLID MODEL: 148CB32TLHNBCAA0002

14 13 12 11

Marks:

Connection Diagram
GEM2034E-FIG7



Heater Connection
3027JE-1C



End shield Assembly		
Part Description	DE Side Part#	ODE Side Part#
End Shield	115E8205BA1	115E4200MB1
Bearing	235A2509AR01	235A2609AA01
Slinger/Inproseal	235A2300FM1	235A4575GS2

Fan & Fan Cover Assembly	
Part Description	Part#
Fan	159C6900G04
Fan Cover	128D6800AB1

Conduit & Accessories Box Assembly	
Part Description	Part#
Conduit Box	149C4429AA2

Mechanical Accessories	
Part Description	Part#
Brake	
Tachometer	

