

Product Information Packet

November 7, 2016

Data shown is for the current revision model #. Ensure your nameplate model # matches.

Model Number:	5CD194SA082A315
Catalog Number:	D468
Instruction Manual:	GEH-3967
Connection Diagram:	36A167900CA502
Outline Drawing:	36A167946AA001

Accessory Connection Diagrams			
Bearing Thermocouple:	None	Heater:	None
RTD:	None	Thermistor:	None
Thermostat:	None	Winding Thermocouple:	None
Bearing RTD:	None		

Table of Contents	
Specification	01
Outline Drawing	02
Connection Drawing(s)	03

Marks:

MODEL NUMBER:	5CD194SA082A315	Enclosure Mtg Assem:	36A167775AC001
Outline Drawing:	36A167946AA001	Instruction Book:	GEH-3967
Connection Diagram:	36A167900CA502	RPM:	1750/2000
Horsepower:	125	Armature Amps:	202
Armature Volts:	500	Type:	CD368AT
Wound:	SHUNT	Power Supply Code:	D
Enclosure:	DPFG-BV	Insulation Class:	F
Duty:	CONT	Ambient Max (°C):	40 C
Rating Code:	194S1350-19	Field Volts:	300/150
K(V):	2.59 Cemf volts/Radian/Sec	WK2:	22.20Lb Ft2
K(T):	1.86 Ft/Amp	Year of Manufacture:	2016
Minimum Ambient:	0 C	Max Altitude:	3300 Ft

Resistances at 25 Degrees C :

Shunt Field:	56.9 OHMS
Armature:	.0654 OHMS
Commutator Field:	.0221 OHMS

Inductances:

Armature Circuit Total:	2.160 mH Saturated
Shunt Field:	48.0 Henries Unsaturated

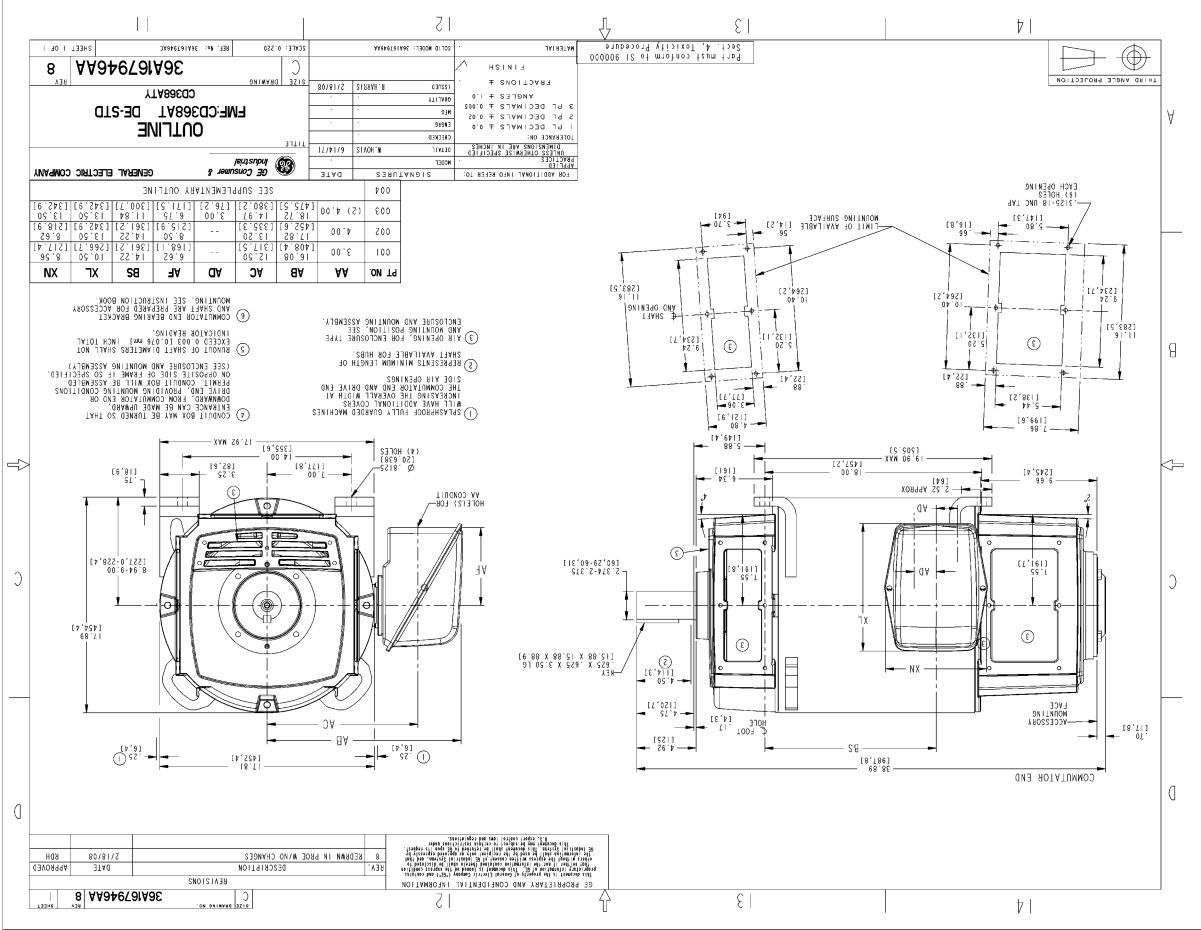
Shunt Field Data:

Shunt Field Current(1): 3.8 AMPS at Rated Load and 1750 RPM
 Shunt Field Current(2): 3.49 AMPS at Rated Load and 1833 RPM
 Shunt Field Current(3): 3. AMPS at Rated Load and 2000 RPM

Additional Machine Notes:

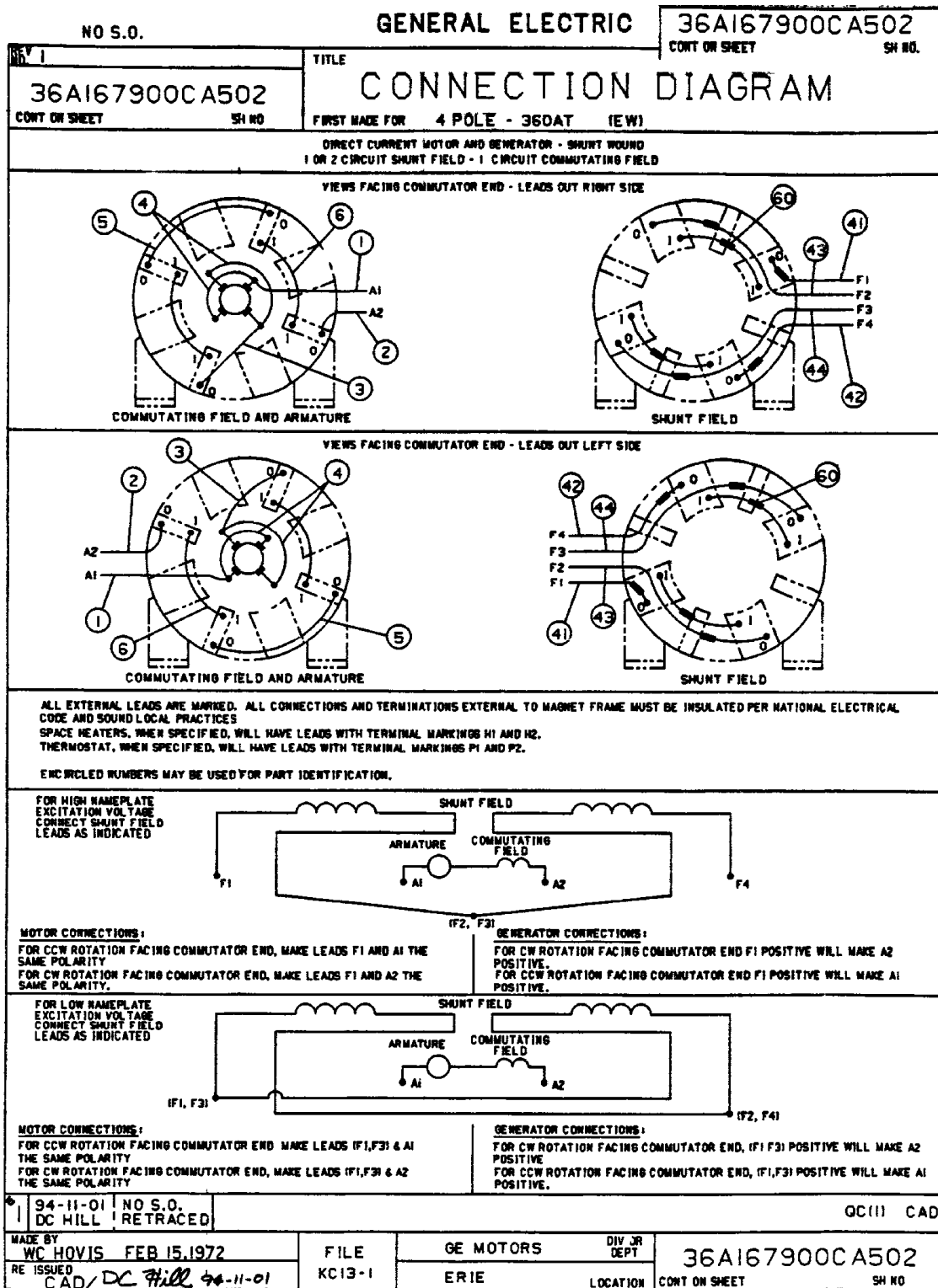
DRIPPROOF FULLY GUARDED, BLOWER VENTILATED - BALL BEARINGS
 CONDUIT BOX ON RIGHT HAND SIDE FACING COMMUTATOR END
 STANDARD SHAFT DRIVE END ONLY - WITH FEET
 WITH:
 CSA STAMP
 THERMOSTAT- NORMALLY CLOSED, AC RATING- 600V MAX-
 .5A, 250V-1.5A, OR 125V-3A- DC RATING- 30V MAX-
 1.5A. MAXIMUM CURRENT BASED ON INDUCTIVE LOADS UP
 TO AND INCLUDING NEMA NO. 5 CONTACTOR.

Marks:



NAME: 208080954 OBJ: C:36A167946AA DATE: 2016-11-07 16:11:00

Marks:



C5X A 36A167900CA502R01