

Product Information Packet

June 1, 2017

Data shown is for the current revision model #. Ensure your nameplate model # matches.

Model Number:	5KS365SAJ6008A
Catalog Number:	V4714
Instruction Manual:	GEK-95351
Connection Diagram:	GEM2034E-FIG7
Outline Drawing:	148CB36TMHKBCAA0001

Accessory Connection Diagrams			
Bearing Thermocouple:	None	Heater:	3027JE-1C
RTD:	None	Thermistor:	None
Thermostat:	3027JE-2A	Winding Thermocouple:	None
Bearing RTD:	None		

Table of Contents

Specification	01
Performance Characteristics	02
Outline Drawing	03
Connection Drawing(s)	04
Spare parts	05



Marks:

MODEL NUMBER:	5KS365SAJ6008A	Estimated Weight:	1335 Lbs
Outline Drawing:	148CB36TMHKBCAA0001	Time Rating:	CONT
Connection Diagram:	GEM2034E-FIG7	Enclosure:	TEFC
Instruction Book:	GEK-95351	Encl Construction:	X\$D
Design Code:	36BD1172AA	Ambient Max(°C):	40
Type:	KS	Alt Ambient Max(°C):	--
Frame:	L365TP16	Insulation Class:	H
Phases:	3	NEMA Design:	B
Poles:	4	Nominal Efficiency:	95.4 %
Output Power:	75HP 55.5KW	Guaranteed Efficiency:	95.0 %
RPM:	1780	3/4 Load Efficiency:	95.6 %
Voltage:	460	KVA Code:	G
Hertz:	60	Max KVAR:	22.3
Amps - FL:	87.1	Power Factor:	84.5
Service Factor:	1.15	Bearing - DE:	6213C3
Alt Service Factor:	--	Bearing - ODE:	235A2523AD01

Enclosure is Totally Enclosed Fan-Cooled

Stamped Nameplate Notes:

HTR LDS HE1-HE2 115V 100W
 ROT CCW FACING ODE LEAD/PH SEQ 1-2-3/1-2-3
 THERMOSTAT LEADS TB1-TB2 TRIP
 INVERTER DUTY PER NEMA MG1 PART 31
 ALTERNATE RATING FOR PWM CONTROL:1.0SF 40C AMBIENT
 VAR TORQUE RANGE 5-60 HZ
 SUITABLE FOR 60 HP, 380V, 50 HZ WITH
 84.3 AMPS AND 1480 RPM AT 1.00 SF

Additional Information:

4 POLE, VERT HOLLOW SHAFT HIGH THRUST (1D)
 SPECIAL BALANCE
 346 CU IN - 3.00" NPT
 BEARING LIFE 8760 HRS AT 5700 LB THRUST
 OIL RESISTANT SLEEVING ON LEADS
 N.C. TRIP TSTAT LDS TO MAIN CONDUIT BOX
 115V HTR LDS TO MAIN CONDUIT BOX
 COUPLING NOT INCLUDED IN BOM, WILL BE
 ORDERED SEPERATELY
 SHAFT GROUNDING RING MOUNTED ON DE BRG CAP
 RCF: 2760 CPM AT C/BOX SIDE, 2760 CPM AT
 90 DEG FROM C/ BOX SIDE
 CG: 17.65 IN FROM P-BASE FACE

Performance Characteristics

1st Winding 1st Connection

Design: 36BD1172AA

Marks:

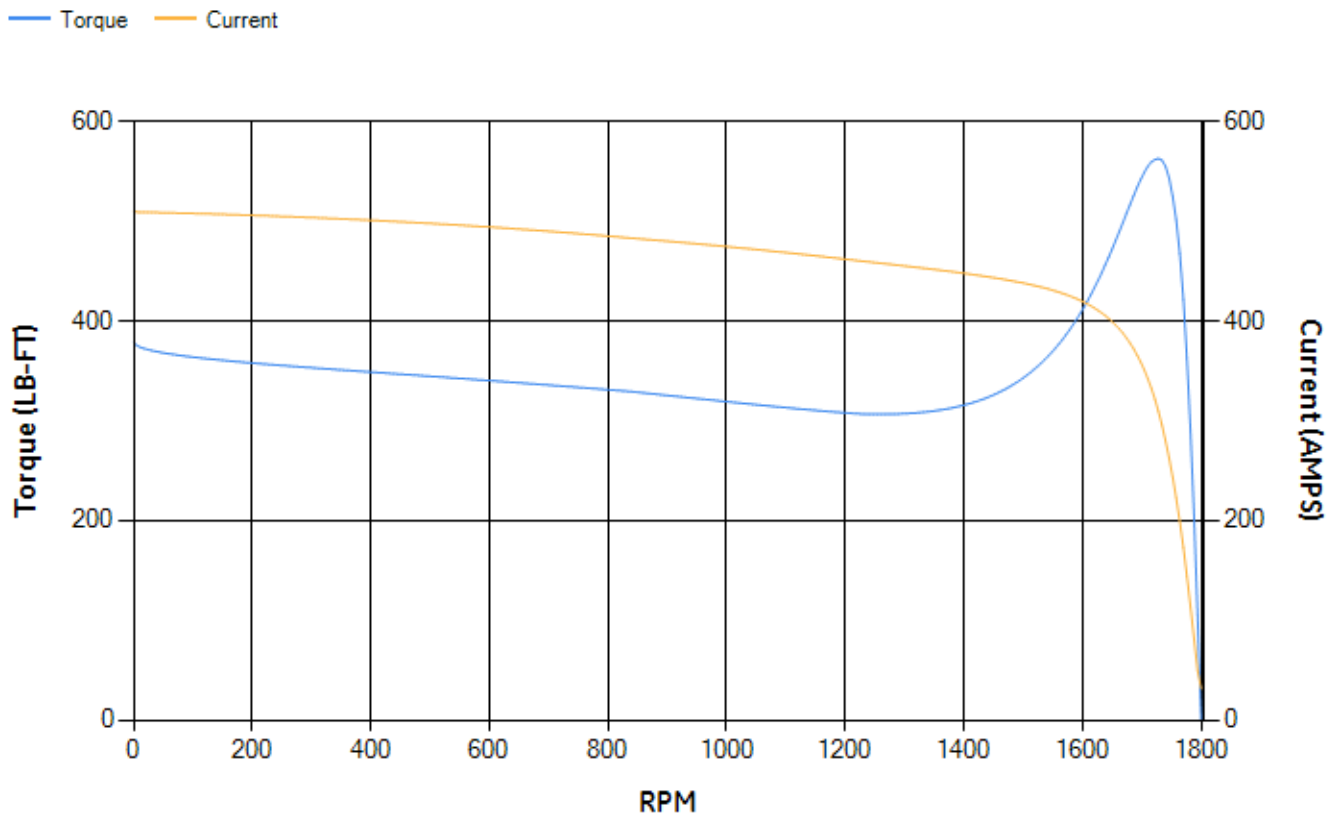
LOAD %	125.0	115.0	100.0	75.0	50.0	25.0	0.0
% EFF	94.46	94.7	95.19	95.24	94.89	92.4	0.00
% PF	86.02	85.69	84.72	81.11	72.31	50.4	3.76
AMPS	107.99	99.48	86.84	68.15	51.15	37.68	31.12

TORQ(FL)#FT	221.09	TORQ(LR)%FL	171.4	TORQ(BD)%FL	253.81
AMPS(LR)	509.22	PF AT START	0.32		

This motor is capable of two cold or one hot start with a maximum connected load inertia of 1409 Lb-Ft Sq (59.32 Kg-meter Sq)at 100% voltage, where the load torque varies with the square of the speed. Acceleration time with maximum inertia and the above load type is 30 seconds. Safe stall time at 100% voltage is 71 seconds cold, 36 seconds hot. Rotor inertia is 16.3 Lb-Ft Sq (0.69 Kg-meter Sq).

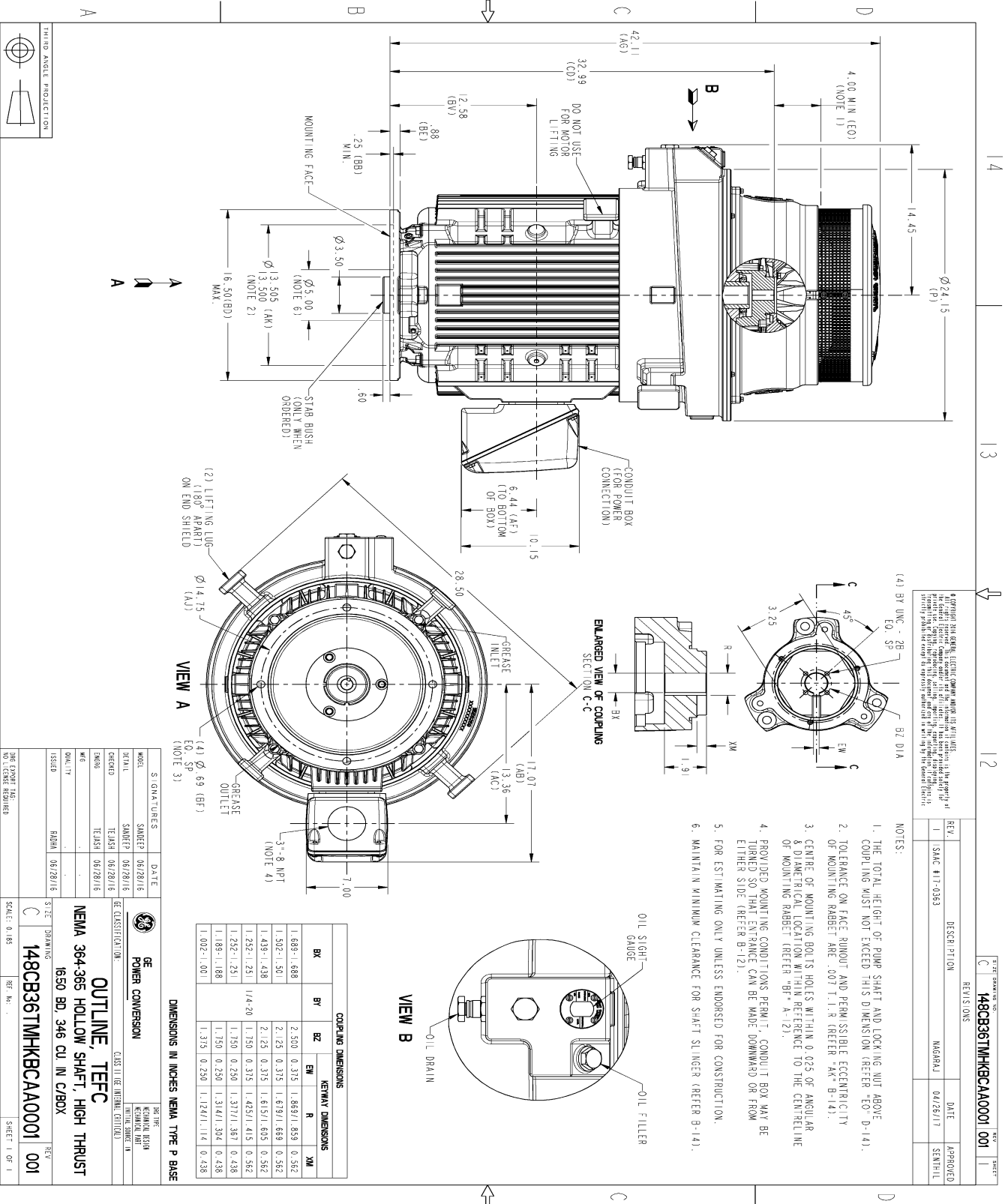
Open Circuit A-C:	0.679	Short Circuit D-C:	0.026
Short Circuit A-C:	0.034	X/R Ratio:	9.808
Stator Slots:	60	Rotor Slots:	50

Speed Torque Current Curve (First Connection, First Speed)



Marks:

SOLID MODEL: 148CB36TMHKBCAA0001



4. GENERAL: THIS DRAWING, ELECTRIC SYMBOLS, AND/OR LISTED PARTS ARE THE PROPERTY OF GE. ALL RIGHTS RESERVED. THE COMPANY AND THE INVENTOR ARE NOT RESPONSIBLE FOR THE PROPER USE OF THIS DRAWING. ANY REPRODUCTION OR TRANSMISSION OF THIS DRAWING WITHOUT THE WRITTEN PERMISSION OF GE IS PROHIBITED. THE COMPANY AND THE INVENTOR ARE NOT RESPONSIBLE FOR THE PROPER USE OF THIS DRAWING.

NOTES:

1. THE TOTAL HEIGHT OF PUMP SHAFT AND LOCKING NUT ABOVE COUPLING MUST NOT EXCEED THIS DIMENSION (REFER TO B-141).
2. TOLERANCE ON FACE ROUNDT AND PERMISSIBLE ECCENTRICITY OF MOUNTING RABBIT ARE .007 T.I.R (REFER TO AK-B-14).
3. CENTER OF MOUNTING HOLES MUST BE WITHIN 0.025 OF ANGULAR & DIAMETRICAL LOCATION WITH REFERENCE TO THE CENTRALLINE OF MOUNTING RABBIT (REFER TO BT-A-12).
4. PROVIDED MOUNTING CONDITIONS PERMIT, CONDUIT BOX MAY BE TURNED SO THAT ENTRANCE CAN BE MADE DOWNWARD OR FROM EITHER SIDE (REFER B-12).
5. FOR ESTIMATING ONLY UNLESS ENDORSED FOR CONSTRUCTION.
6. MAINTAIN MINIMUM CLEARANCE FOR SHAFT SLINGER (REFER B-141).

COUPLING DIMENSIONS		KEYWAY DIMENSIONS	
BY	BZ	EW	XM
1.689	1.688	2.500	0.375
1.502	1.501	1.689	1.689
1.439	1.438	2.125	0.375
1.252	1.251	1.425	1.415
1.252	1.251	1.350	0.250
1.189	1.188	1.750	0.250
1.002	1.001	1.314	1.304
		1.375	0.250

DIMENSIONS IN INCHES NEMA TYPE P BASE

MODEL	5KS365SAJ6008A	DATE	06/28/16
DESIGNER	SMOETZ	CHECKED	TEJASH
DATE	06/28/16	DATE	06/28/16
BY	SMOETZ	BY	SMOETZ
DATE	06/28/16	DATE	06/28/16
BY	SMOETZ	BY	SMOETZ
DATE	06/28/16	DATE	06/28/16

GE POWER CONVERSION

OUTLINE, TEFC

NEMA 364-365 HOLLOW SHAFT, HIGH THRUST

1650 BD, 346 CU IN C/BOX

148CB36TMHKBCAA0001

SCALE: 0.185

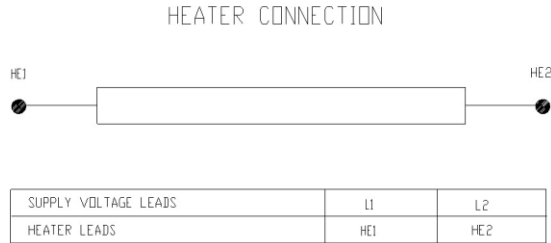
SHEET 1 OF 1

Marks:

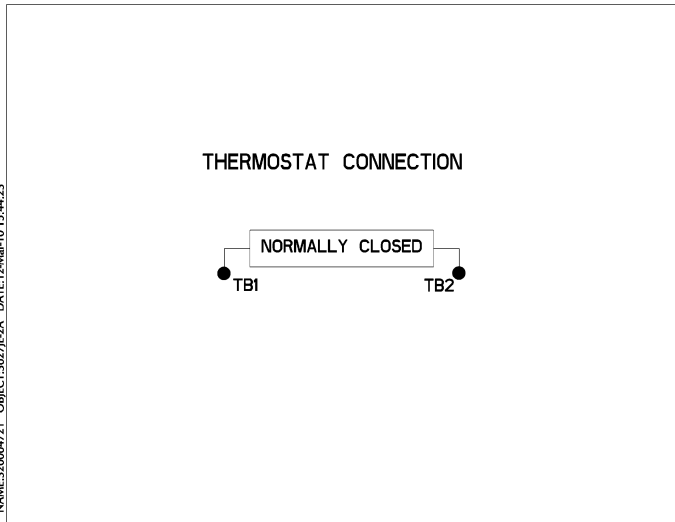
Connection Diagram
GEM2034E-FIG7



Heater Connection
3027JE-1C



Thermostat Connection
3027JE-2A



NAME:32000471 OBJECT:3027JE-2A DATE:12-Mar-10 15:44:23

End shield Assembly		
Part Description	DE Side Part#	ODE Side Part#
End Shield	115E8258AA1	115E8259LA1
Bearing	235A2517AA01	235A2523AD01
Slinger/Inproseal	235A2300FM1	

Fan & Fan Cover Assembly	
Part Description	Part#
Fan	153B1888G02
Fan Cover	128D6844AA1

Conduit & Accessories Box Assembly	
Part Description	Part#
Conduit Box	149C4429AA2

Mechanical Accessories	
Part Description	Part#
Brake	
Tachometer	